



Scioto Corporate Center

 5500 Frantz Road, Dublin, OH

Property Details

- Type: Office Building
- Size: 60,000SF
- Parking: Surface Lot
- Floors: Single Story
- Suites: Divisible from 500SF to 16,000SF

Features

- 24/7 Building Access
- Building Security System
- Easy Access at Tuttle Crossing with I-270 Nearby



Now Leasing

Scioto Corporate Center, Suite 120

Positioned on the South End of the beautiful, single-story Scioto Corporate center, Suite 120 can be leased as a full 11,439 SF office or divided into smaller footprints. Enjoy newly remodeled common areas, key card access, ample surface parking and possible monument signage.

Suite Specs

- 11,439 SF (Divisible)
- Some Furnishings
- Customizable floor configurations
- Kitchenette
- In-Suite Restrooms
- Conference Rooms
- Open Work Area
- Private Offices

Lease Specs

- Modified Gross
- 3+ Year Term
- \$20/SF/YR



Now Leasing

Scioto Corporate Center, Suite 100

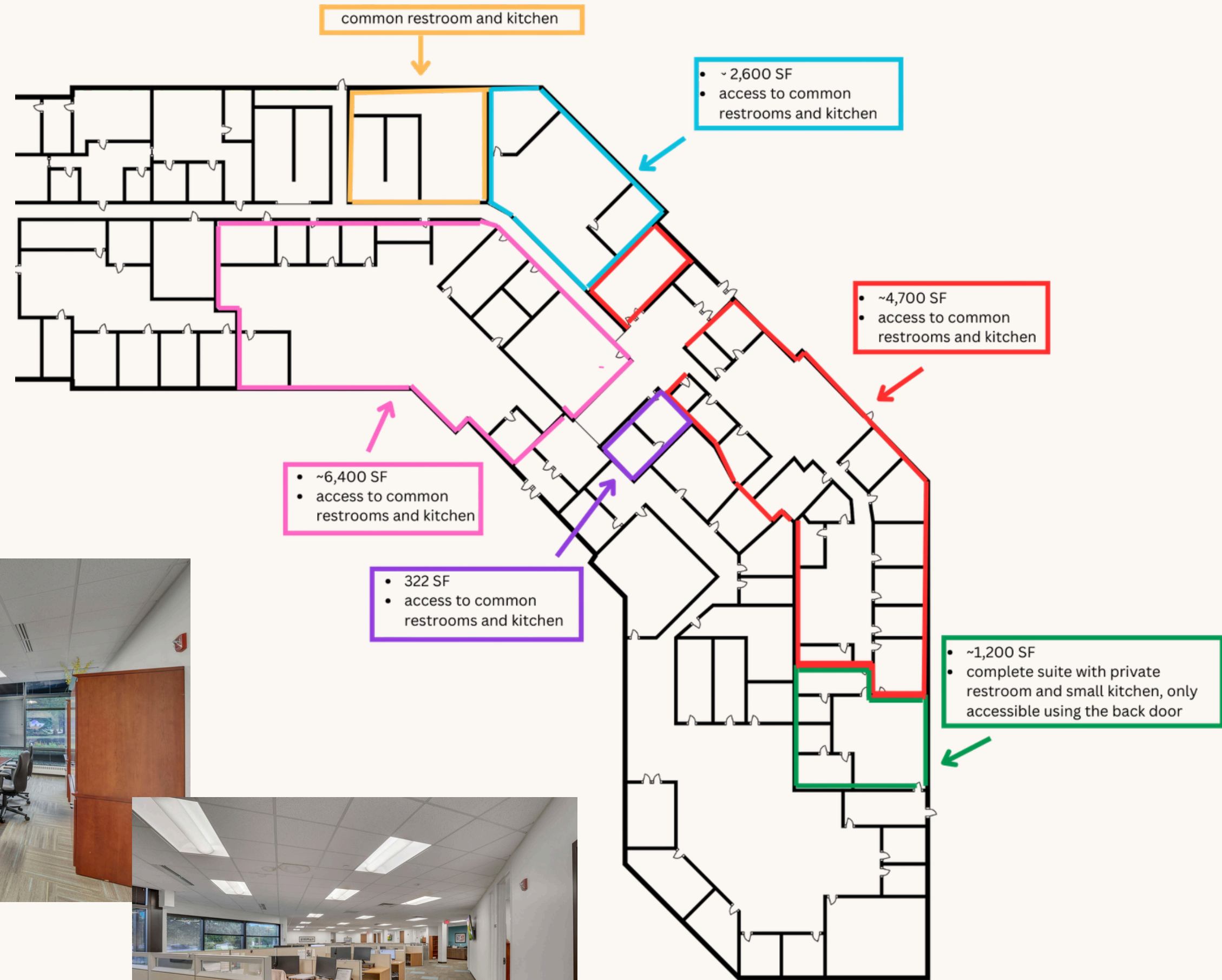
Positioned at the South End of the beautiful, single story Scioto Corporate Center, Suite 100 offers a unique opportunity, with options to lease as a full 16,835SF suite or divide into smaller footprints. Enjoy newly remodeled common areas, key card access, ample surface parking and possible monument signage.

Suite Specs

- 16,835 SF (divisible)
- Customizable floor configurations
- Kitchenette
- Conference Rooms
- Open Work Area
- Private Offices
- Executive Suite

Lease Specs

- Modified Gross
- 3+ Year Term
- \$20/SF/YR



Now Leasing

Scioto Corporate Center, Suite 110

Positioned at the Center Entrance of the beautiful, single story Scioto Corporate Center, Suite 110 offers a welcoming glass front reception area, two conference rooms, a kitchenette and several private offices. Enjoy newly remodeled common areas, key card access, ample surface parking and possible monument signage.

Suite Specs

- 3,315 SF
- Glass Entrance
- Kitchenette
- Conference Rooms
- Private Offices

Lease Specs

- Modified Gross
- 3+ Year Term
- \$20/SF/YR



Now Leasing

Scioto Corporate Center, Suite 107

Positioned off the Center Entrance of the beautiful, single story Scioto Corporate Center, Suite 107 offers a large reception/open working area along with three private offices. Enjoy newly remodeled common areas, key card access, ample surface parking and possible monument signage.

Suite Specs

- 3,315 SF
- Open Work Area
- Private Offices

Lease Specs

- Modified Gross
- 3+ Year Term
- \$20/SF/YR



Now Leasing

Scioto Corporate Center, Suite 170

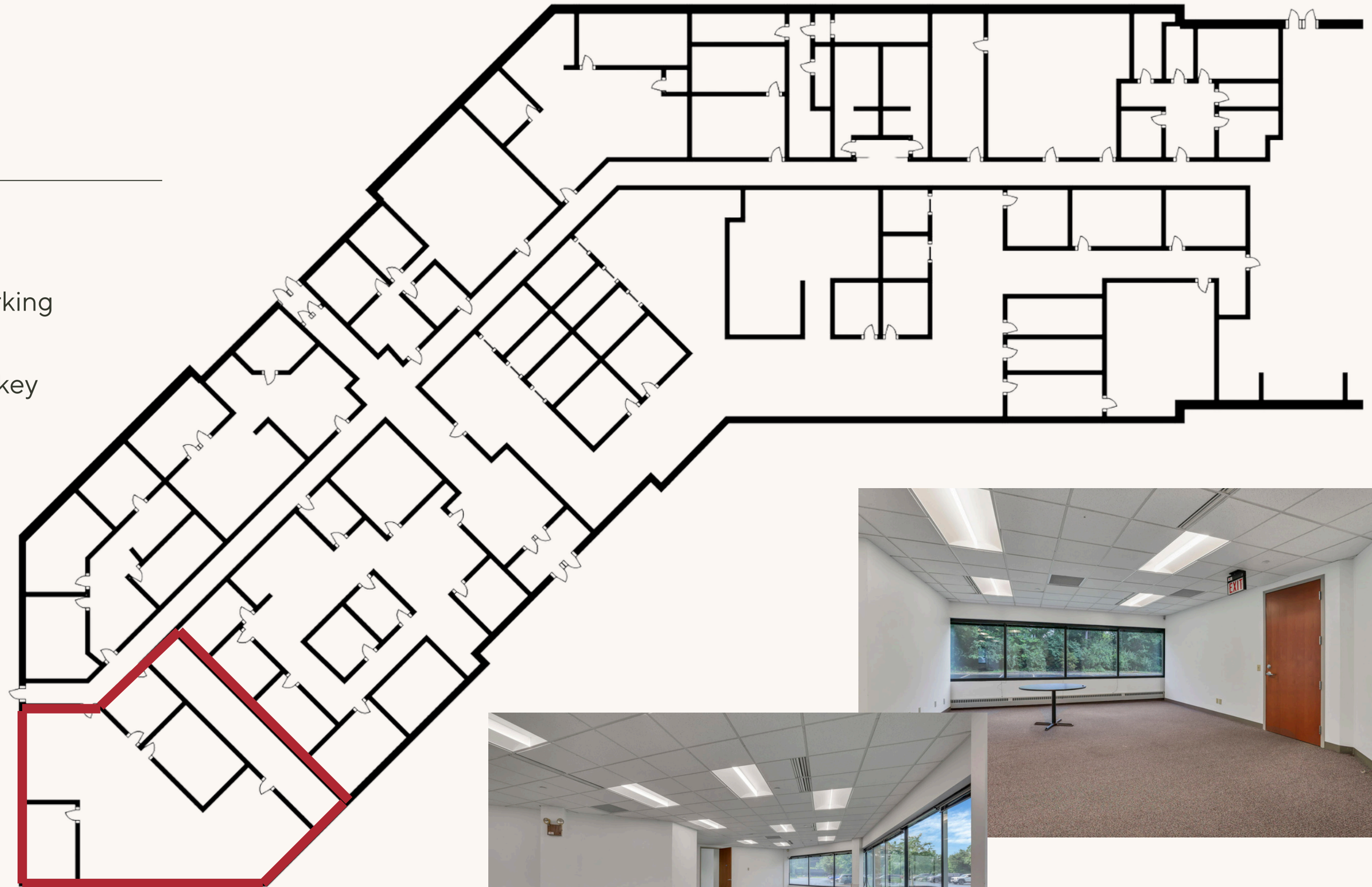
Positioned on the North End of the beautiful, single-story Scioto Corporate center, Suite 170 offers a large, open working area along with multiple private offices. . Enjoy newly remodeled common areas, key card access, ample surface parking and possible monument signage.

Suite Specs

- 2,840 SF
- Open work area
- Private Offices

Lease Specs

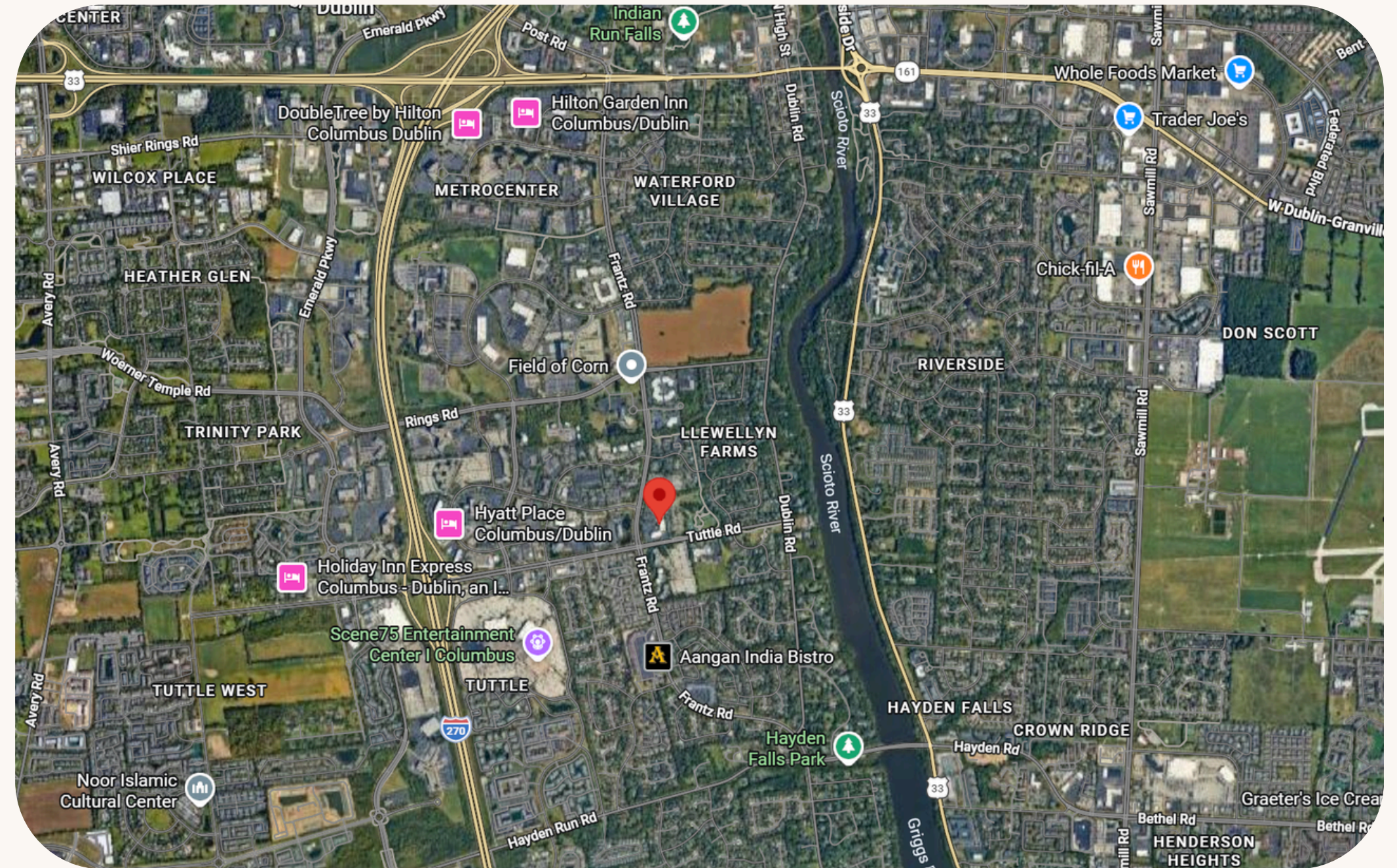
- Modified Gross
- 3+ Year Term
- \$20/SF/YR



Why Dublin...

Located just northwest of Columbus, Dublin is one of Central Ohio's most established and desirable business communities. Known for its strong corporate presence, highly educated workforce and exceptional public services, Dublin offers strategic location with immediate access to U.S Route 33 and I-270.

Dublin is home to major employers, reflecting a diverse and economic base. The city consistently ranks among the best places to live in Ohio, supported by strong demographics, high household incomes and a pro-business municipal environment.



Beyond business, Dublin offers exceptional quality of life. The walkable Bridge Park district, scenic riverfront along the Scioto River, more than 60 miles of bike paths, and nationally recognized events such as the Memorial tournament all create a vibrant, connected community. Top rated schools, beautiful parks and a thriving dining and retail scene make Dublin an attractive destination for both employers and employees.

Dublin delivers the perfect combination of economic strength, accessibility and lifestyle appeal, making it an ideal location to grow a business and call home.

Key Demographics

Dublin, Ohio



Population & Households

- 49,456 residents
- 76% homeowners



Income & Business

- Median Household Income: \$155,282
- Per Capita Income: \$72,217
- Businesses: ~2,800 active enterprises



Age & Diversity

- Median Age: 43 years
- Vibrant, multicultural community



Education & Workforce

- 73% hold bachelor's degree or higher
- 66.8% employed in civilian labor force



Contact Us



+380-237-6292



property@kellerenviro.com



www.kellerenviro.com