

1590 MADISON AVENUE SE
GRAND RAPIDS, MICHIGAN

INDUSTRIAL FOR SALE
21,725 Square Feet Available



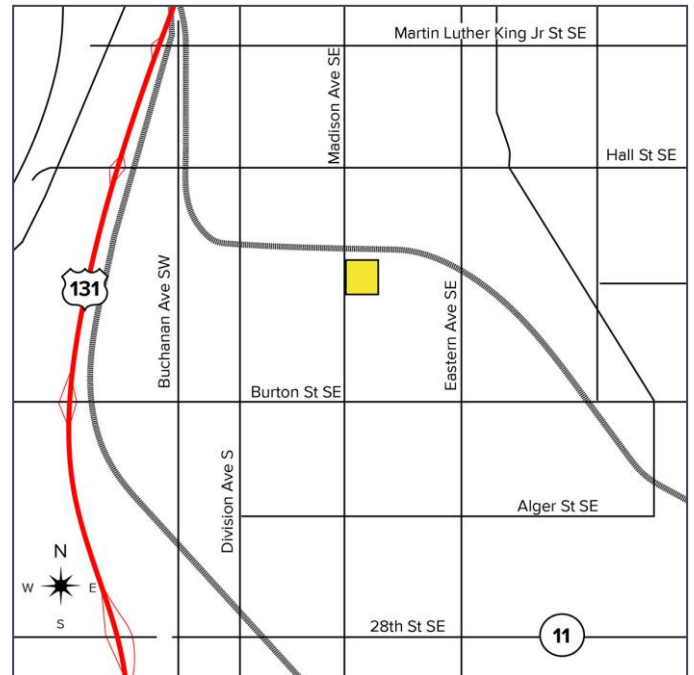
**SIGNATURE
ASSOCIATES**
KNOW SIGNATURE | KNOW RESULTS

CRANEWAYS



PROPERTY FEATURES

- 21,725 square feet available
- 2,059 office square feet
- Located on 0.941 acres
- (3) 16' x 14' Grade level doors
- (4) Cranes [2 – 7.5-ton, 1 – 15-ton, 1 – 2-ton]
- 12' – 26' Clear height
- Fenced yard
- Updated LED lighting throughout
- Built in 1939; retrofit 1950, 1967 & 1989
- Zoned TBA SD-IT
- Sale Price: \$850,000 (\$39.13/SF)



For more information, please contact:

CATHY BOTTEMA
(616) 262 8396
cbottema@signatureassociates.com

SIGNATURE ASSOCIATES
1188 East Paris Ave SE, Suite 220
Grand Rapids, MI 49546
www.signatureassociates.com

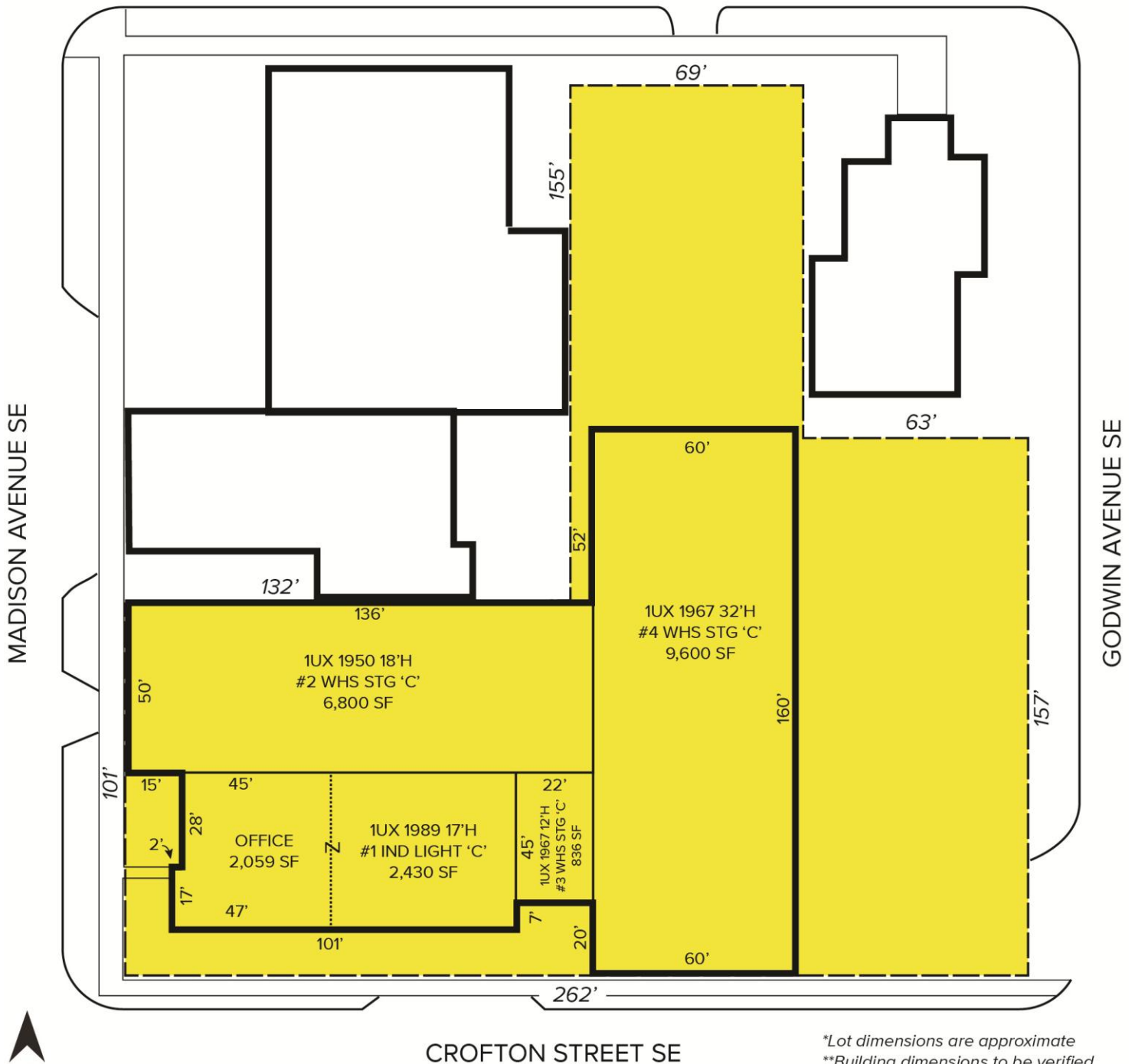
1590 Madison Avenue SE – Grand Rapids, Michigan

Industrial For Sale

21,725
Square Feet
AVAILABLE

Floor Plan

COTTAGE GROVE STREET SE



*Lot dimensions are approximate
**Building dimensions to be verified

For more information, please contact:

CATHY BOTTEMA
(616) 262 8396
cbottema@signatureassociates.com

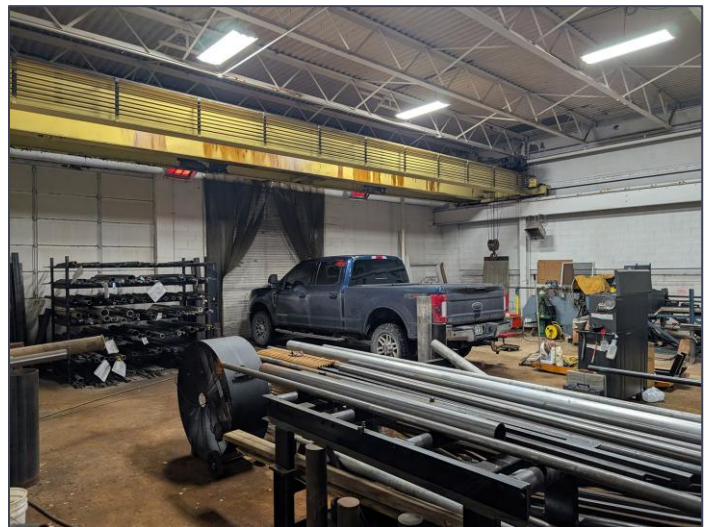
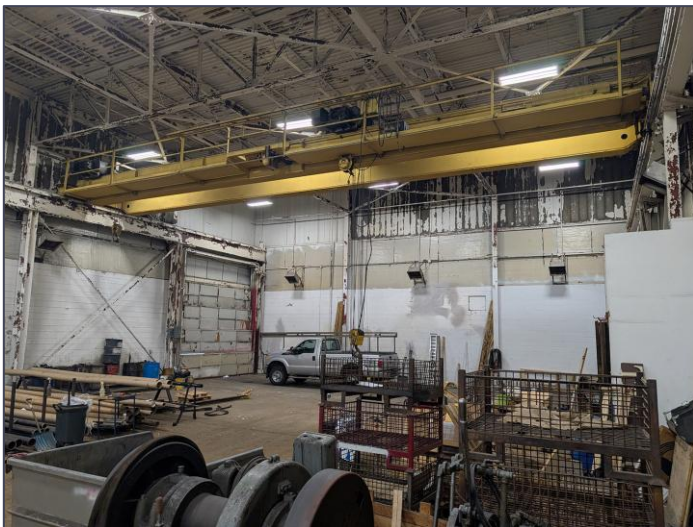
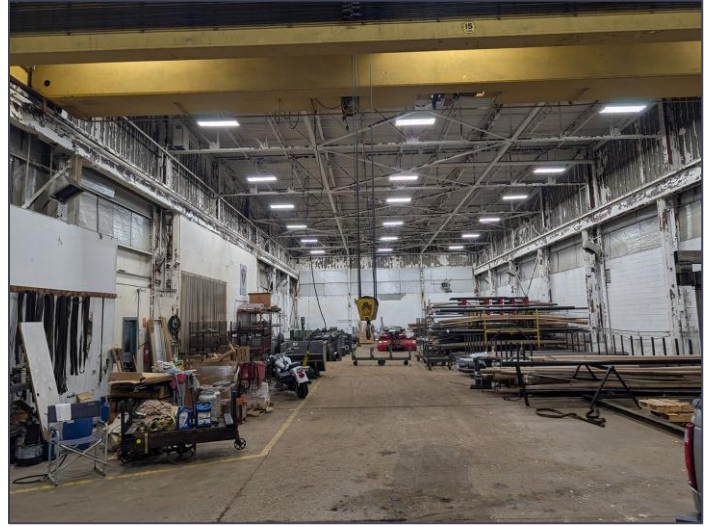
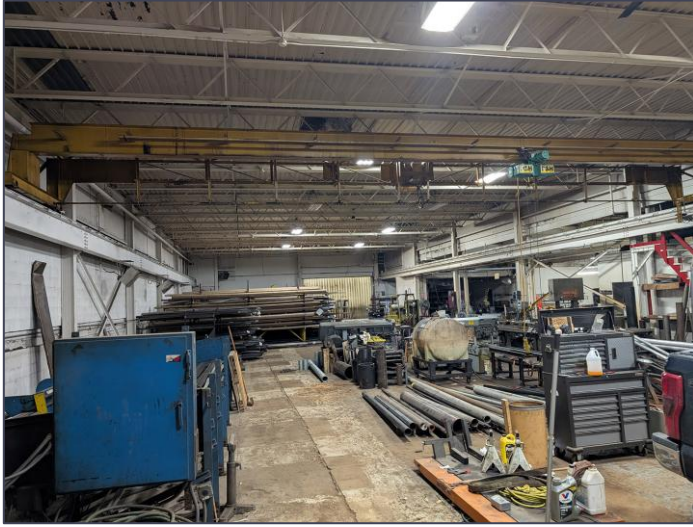
SIGNATURE ASSOCIATES
1188 East Paris Ave SE, Suite 220
Grand Rapids, MI 49546
www.signatureassociates.com

1590 Madison Avenue SE – Grand Rapids, Michigan

Industrial For Sale

21,725
Square Feet
AVAILABLE

Interior Warehouse Photos



For more information, please contact:

CATHY BOTTEMA
(616) 262 8396
cbottema@signatureassociates.com

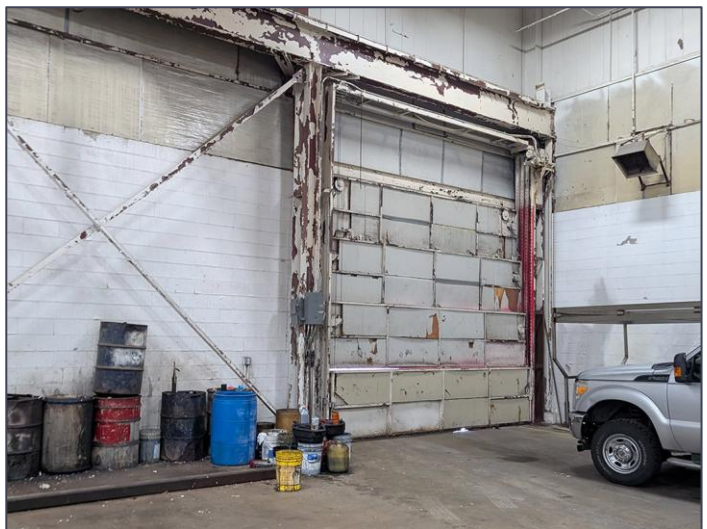
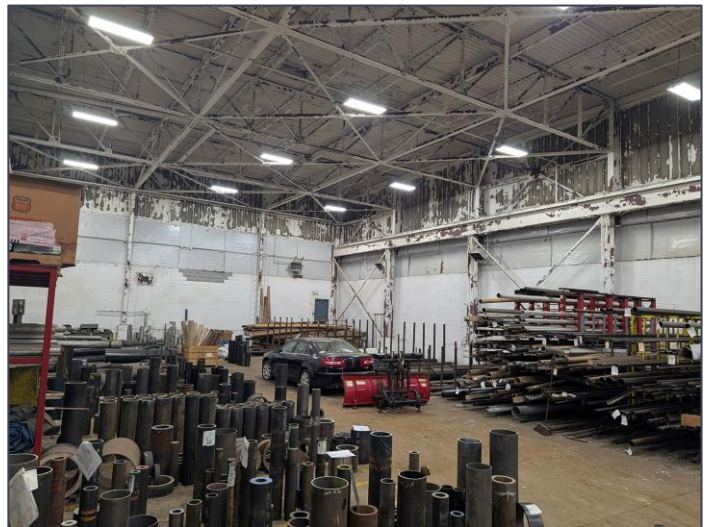
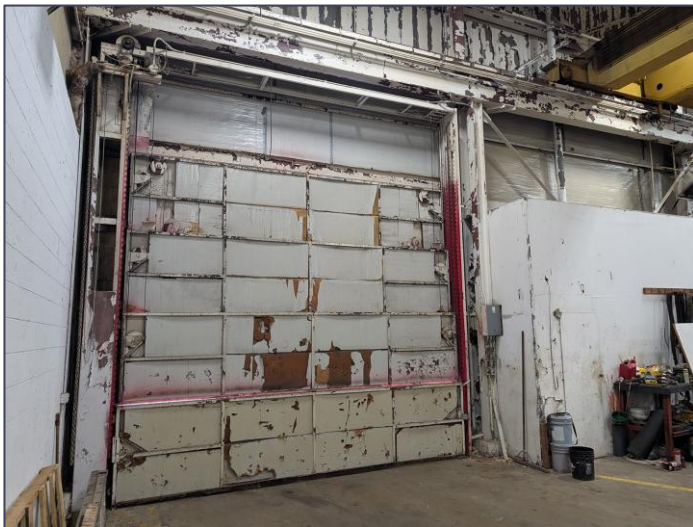
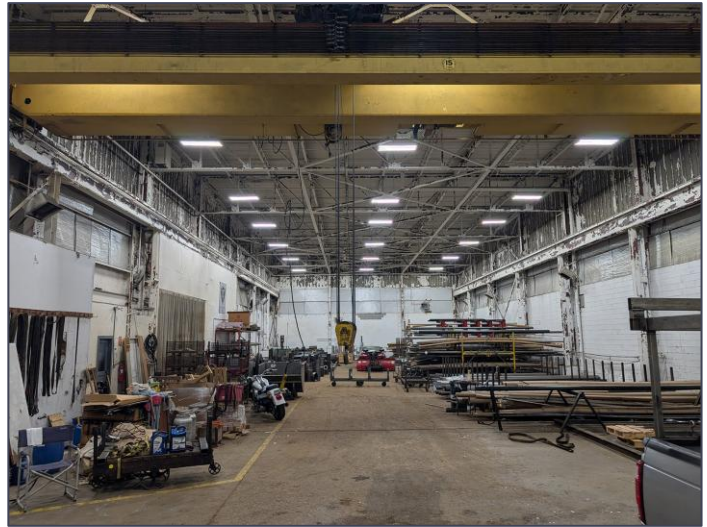
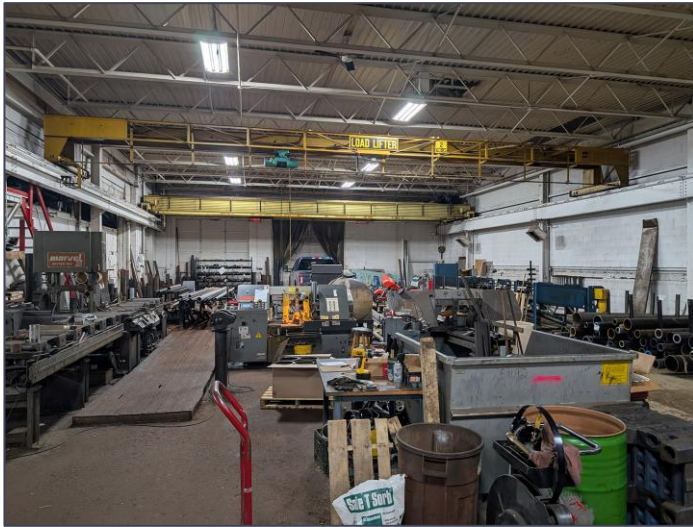
SIGNATURE ASSOCIATES
1188 East Paris Ave SE, Suite 220
Grand Rapids, MI 49546
www.signatureassociates.com

1590 Madison Avenue SE – Grand Rapids, Michigan

Industrial For Sale

21,725
Square Feet
AVAILABLE

Interior Warehouse Photos



For more information, please contact:

CATHY BOTTEMA
(616) 262 8396
cbottema@signatureassociates.com

SIGNATURE ASSOCIATES
1188 East Paris Ave SE, Suite 220
Grand Rapids, MI 49546
www.signatureassociates.com

1590 Madison Avenue SE – Grand Rapids, Michigan

Industrial For Sale

21,725
Square Feet
AVAILABLE

Aerial



Office Photos



For more information, please contact:

CATHY BOTTEMA
(616) 262 8396
cbottema@signatureassociates.com

SIGNATURE ASSOCIATES
1188 East Paris Ave SE, Suite 220
Grand Rapids, MI 49546
www.signatureassociates.com