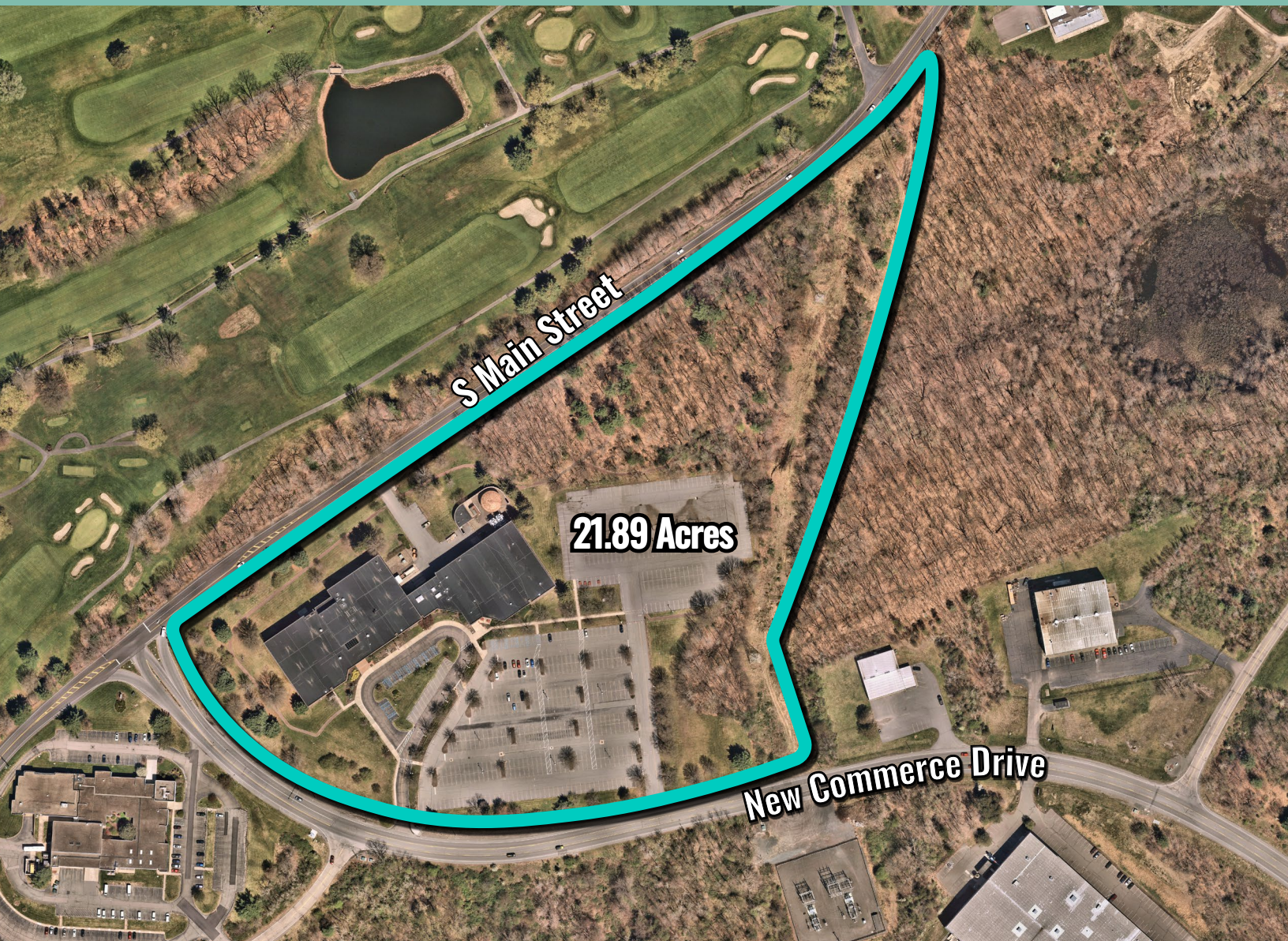


# Redevelopment Opportunity

Luzerne County, PA

50 New Commerce Drive,  
Wilkes Barre, PA

21.89 Acres Industrial Development for Sale





# Easy Access to Route 29 & I-81



# Proposed Site Yield Opportunities



1.3 Miles

Route 29 South

1.5 Miles

Route 29 North

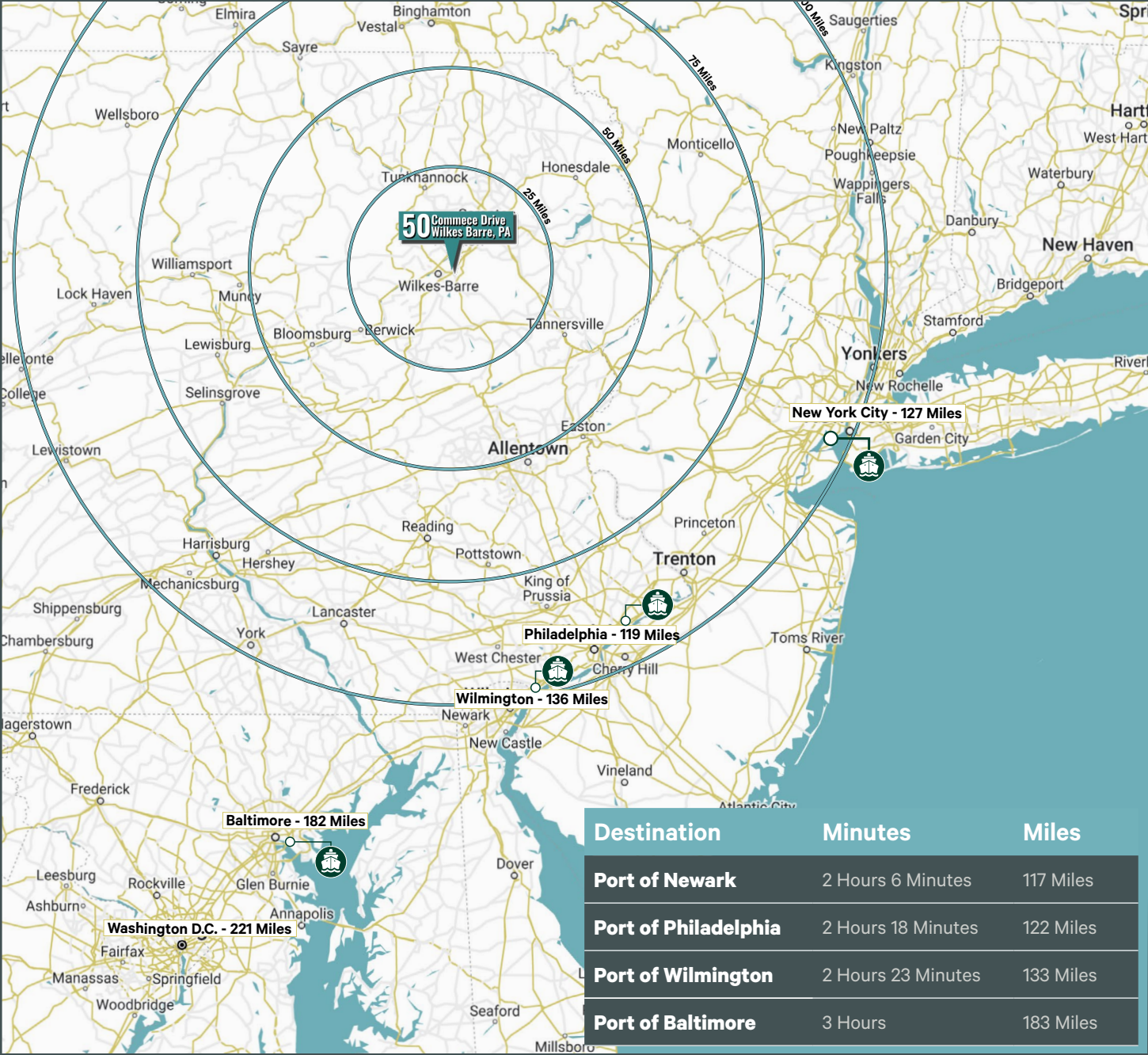
2.1 Miles

Interstate 81

<b>County / Township:</b>	Luzerne County Hanover Township
<b>Acreage:</b>	21.89 Acres
<b>Zoning:</b>	I-1 (Industrial)
<b>Expected Development Yield:</b>	180,000 SF - 300,000 SF
<b>Notes:</b>	Property is currently zoned I-1 which permits distribution and warehousing by-right NorthPoint Development completed large-scale redevelopment at entrance to the park in 2019 (Adidas, Chewy.com, etc) Expected site yield is subject to receipt and review of ALTA survey to determine what if any development impacts needs to be considered and evaluated



# Regional Access



## Contact Us

### Sean Bleiler

Executive Vice President  
 +1 610 398 3409  
 sean.bleiler@cbre.com  
 Lic. PA

### Jake Terkanian

Executive Vice President  
 +1 610 727 5906  
 jake.terkanian@cbre.com  
 Lic. PA, NJ

### Mike Barker

Executive Vice President  
 +1 610 251 5109  
 mike.barker@cbre.com  
 Lic. PA

### John La Prise

Senior Associate  
 +1 484 567 3351  
 john.laprise@cbre.com  
 Lic. PA

© 2024 CBRE, Inc. All rights reserved. This information has been obtained from sources believed reliable, but has not been verified for accuracy or completeness. You should conduct a careful, independent investigation of the property and verify all information. Any reliance on this information is solely at your own risk. CBRE and the CBRE logo are service marks of CBRE, Inc. All other marks displayed on this document are the property of their respective owners, and the use of such logos does not imply any affiliation with or endorsement of CBRE. Photos herein are the property of their respective owners. Use of these images without the express written consent of the owner is prohibited.

