

COSBY VILLAGE SQUARE

NOW LEASING & PRE-LEASING



Connie Jordan Nielsen | connie.nielsen@thalhimer.com | 804 697 3569
Alicia Brown | alicia.brown@thalhimer.com | 804 697 3483



Independently Owned and Operated / A Member of the Cushman & Wakefield Alliance

Cushman & Wakefield | Thalhimer © 2025. No warranty or representation, express or implied, is made to the accuracy or completeness of the information contained herein, and same is submitted subject to errors, omissions, change of price, rental or other conditions, withdrawal without notice, and to any special listing conditions imposed by the property owner(s). As applicable, we make no representation as to the condition of the property (or properties) in question.

COSBY VILLAGE SQUARE

NOW LEASING & PRE-LEASING

FEATURES

RETAIL

- Building Sites available from +/- 1.47 Acres
- Spaces available from 1,322 – 12,363 SF
- Restaurant spaces with waterfront & endcap patio options
- Build To Suit Opportunities

OFFICE

- 1-story, 7,237 SF office/retail building
- Build-to-suit office or medical office
- Purchase and Lease Options
- Generous parking ratio
- 15-minute drive to Bon Secours St. Francis Medical Center

PROPERTY FEATURES

- NEW DEVELOPMENT DELIVERING SPACES NOW – PRE-LEASING NEW BUILDINGS IN DESIGN
- Dynamic location in fastest growing residential area in Richmond
- 44,000 VPD – Hull Street Road (Route 360)
- Mixed-use development featuring 500+ residential units, retail buildings & outparcels
- Great access from Hull Street, Cosby Road, Otterdale Road & Fox Club Parkway
- Located between Hampton Park, Harpers Mill & Magnolia Green

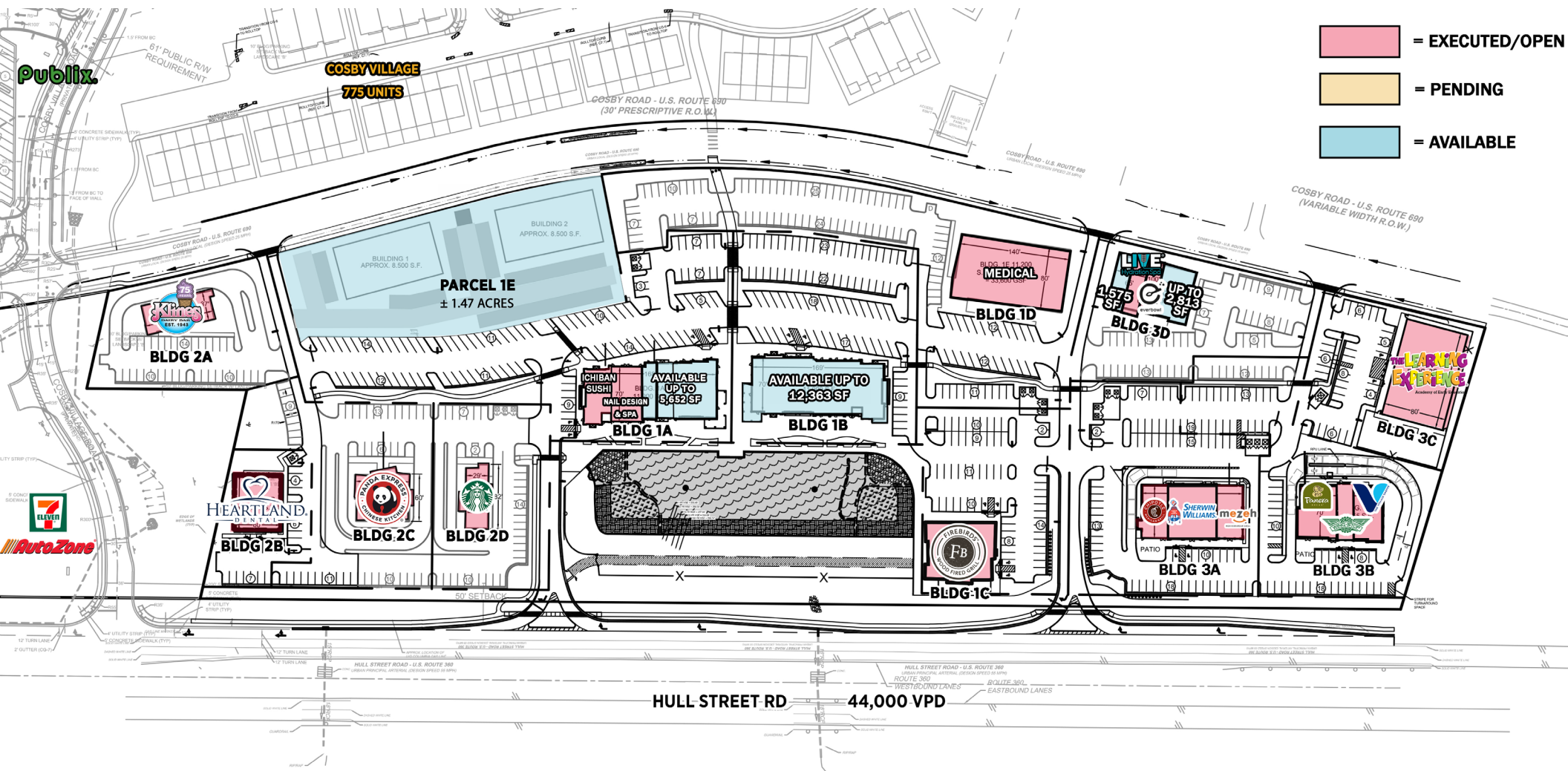
Join Nearby Retailers & Co-Tenants



COSBY VILLAGE SQUARE

NOW LEASING & PRE-LEASING

SITE PLAN



COSBY VILLAGE SQUARE

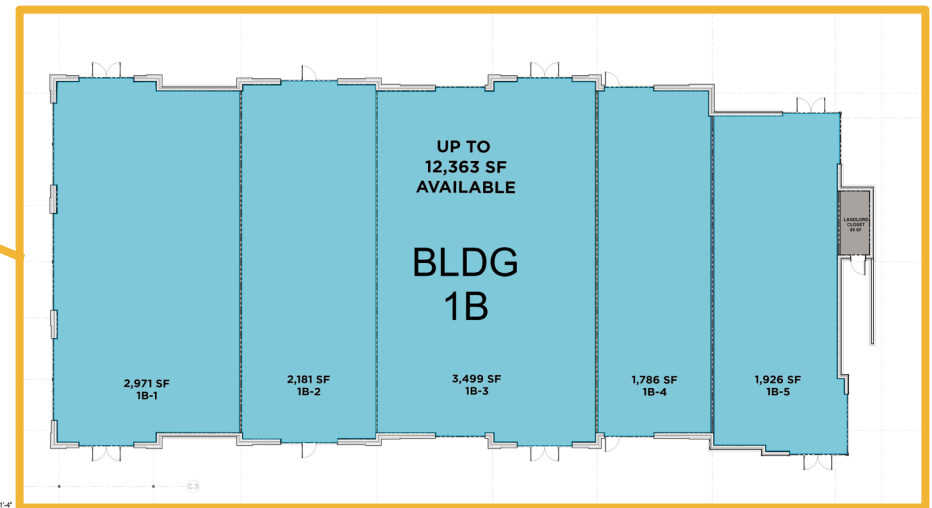
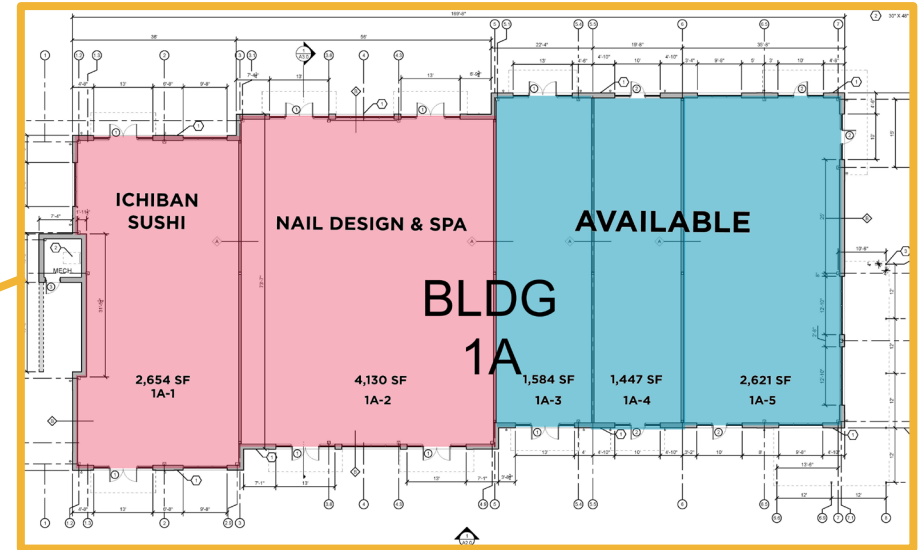
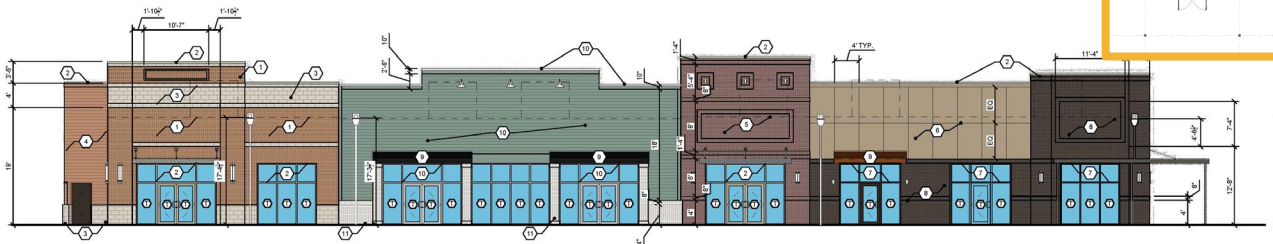
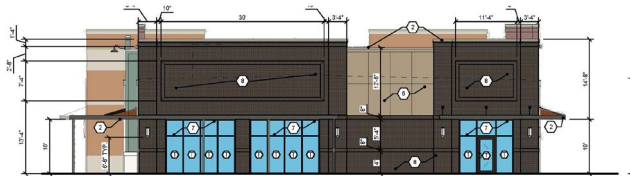
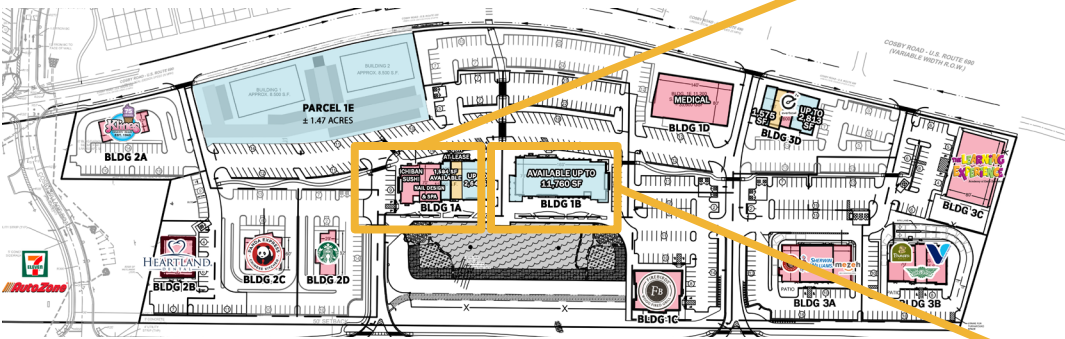
NOW LEASING
& PRE-LEASING



COSBY VILLAGE SQUARE

NOW LEASING & PRE-LEASING

BUILDING 1A & 1B

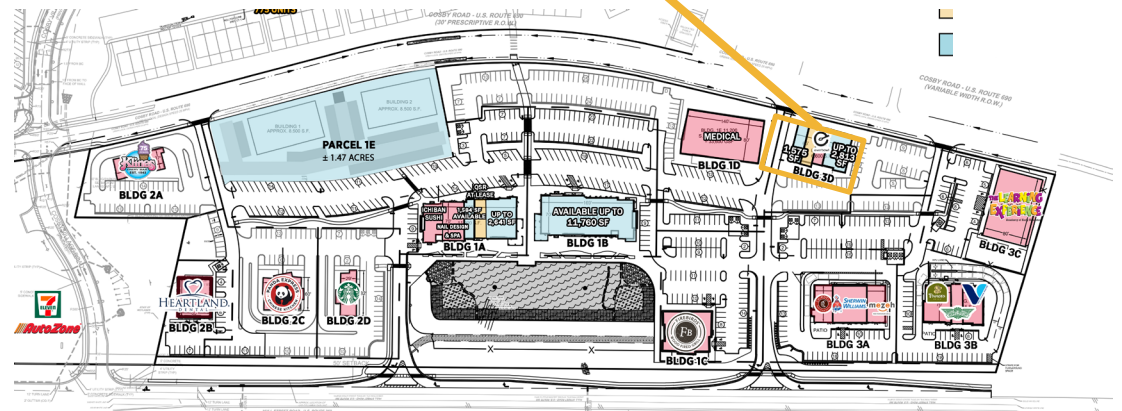
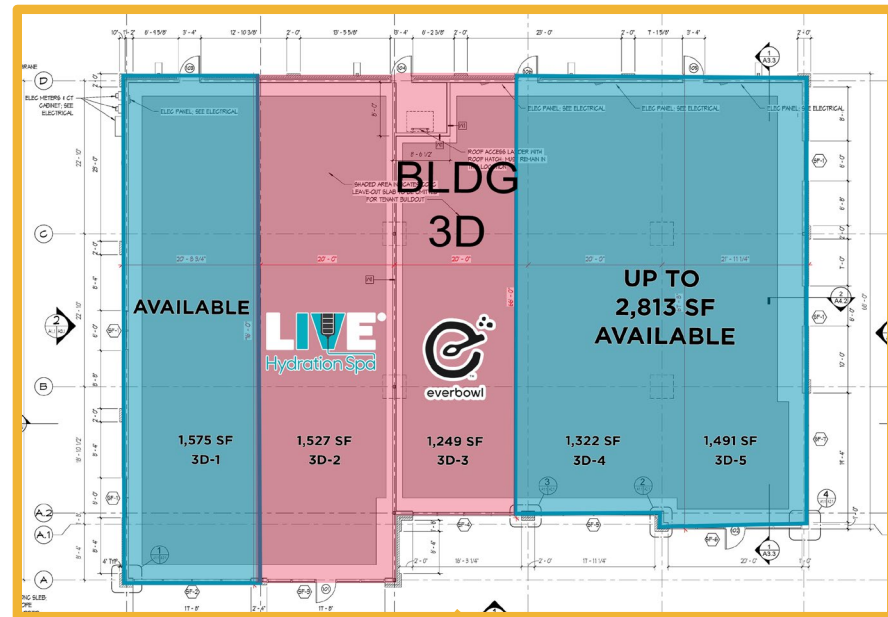


COSBY VILLAGE SQUARE

NOW LEASING & PRE-LEASING



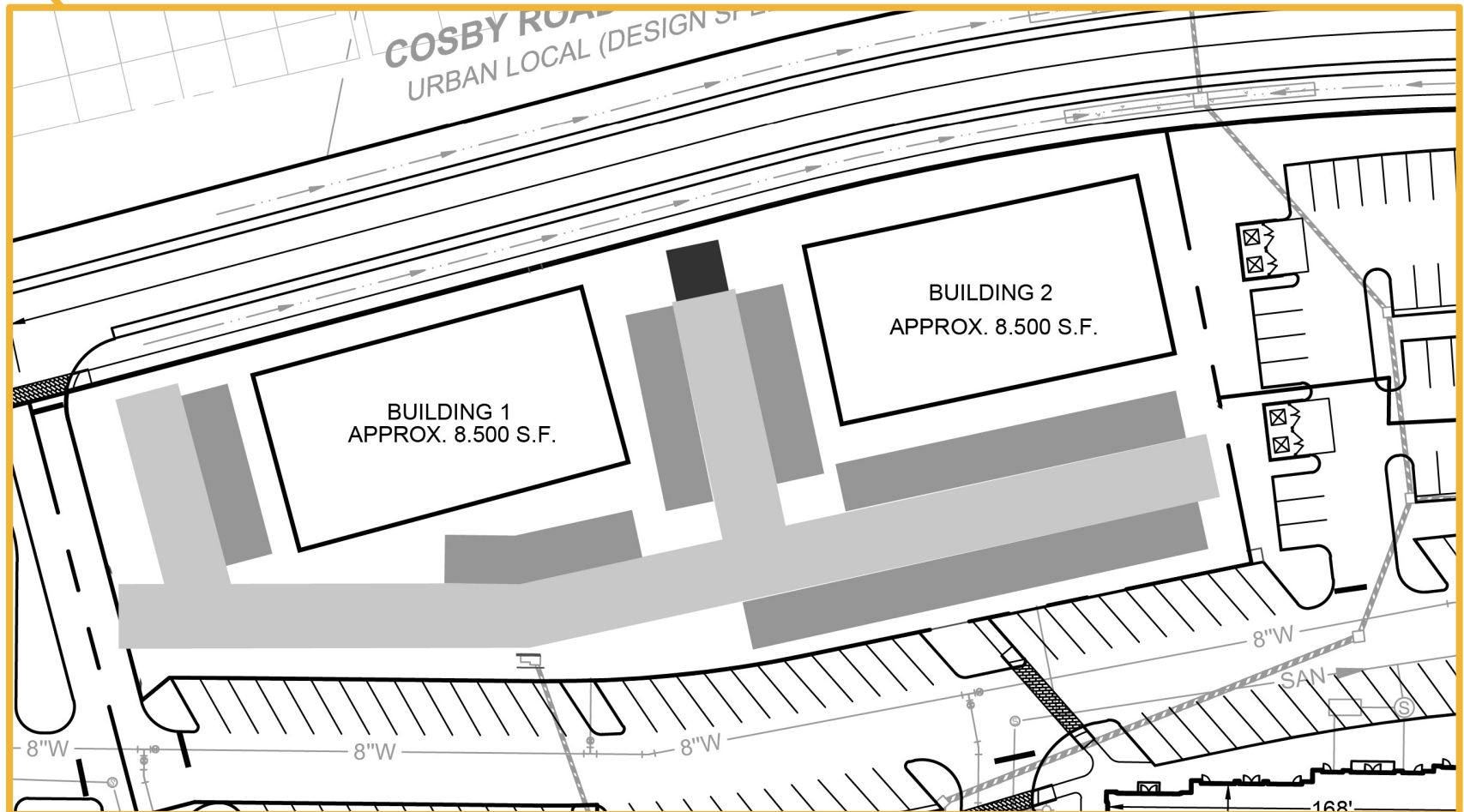
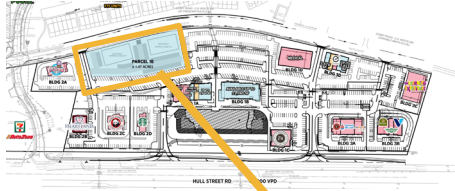
BUILDING 3D



COSBY VILLAGE SQUARE

NOW LEASING
& PRE-LEASING

PARCEL 1E - POTENTIAL LAYOUT



COSBY VILLAGE SQUARE

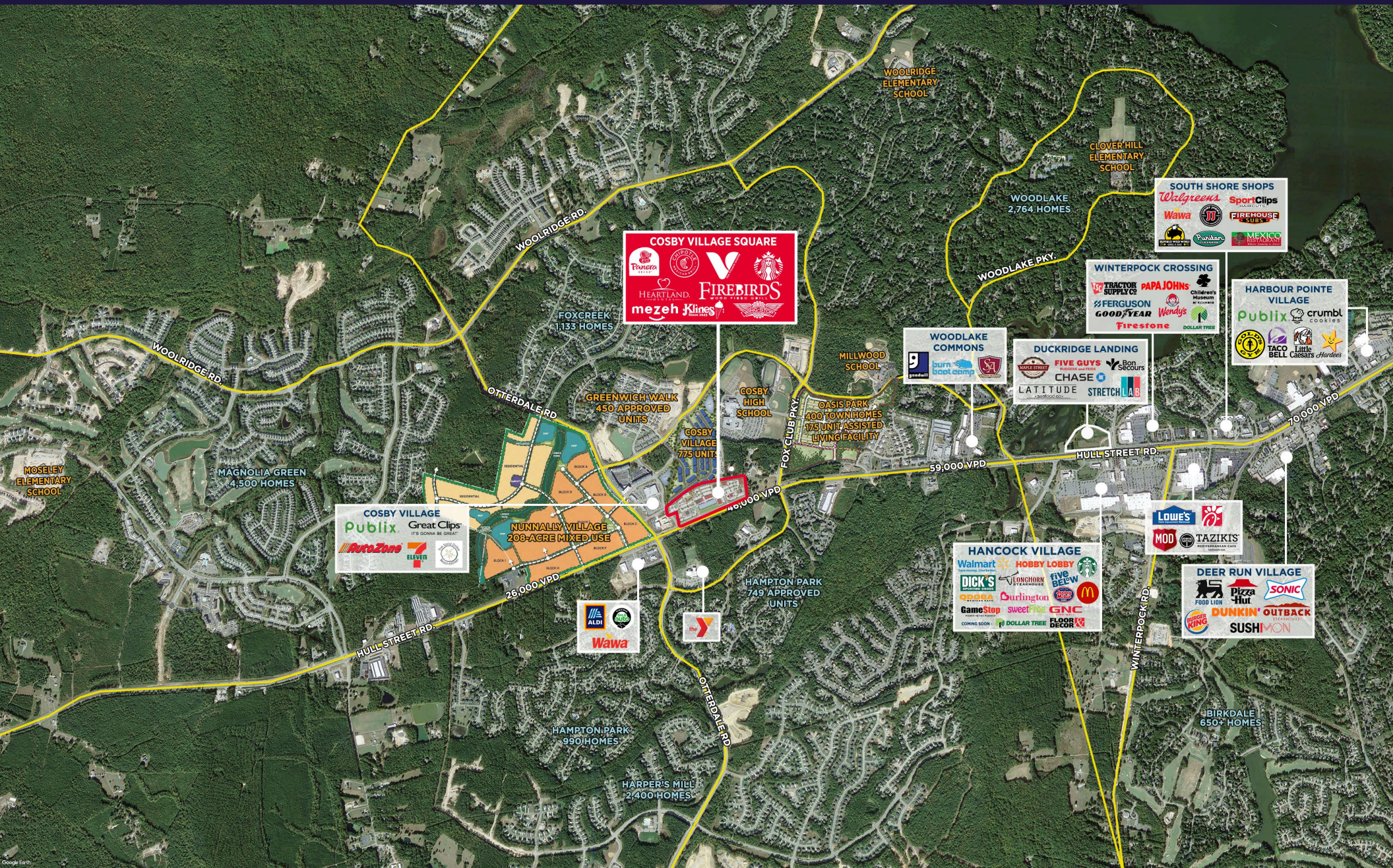
**NOW LEASING
& PRE-LEASING**

BUILDING 1D



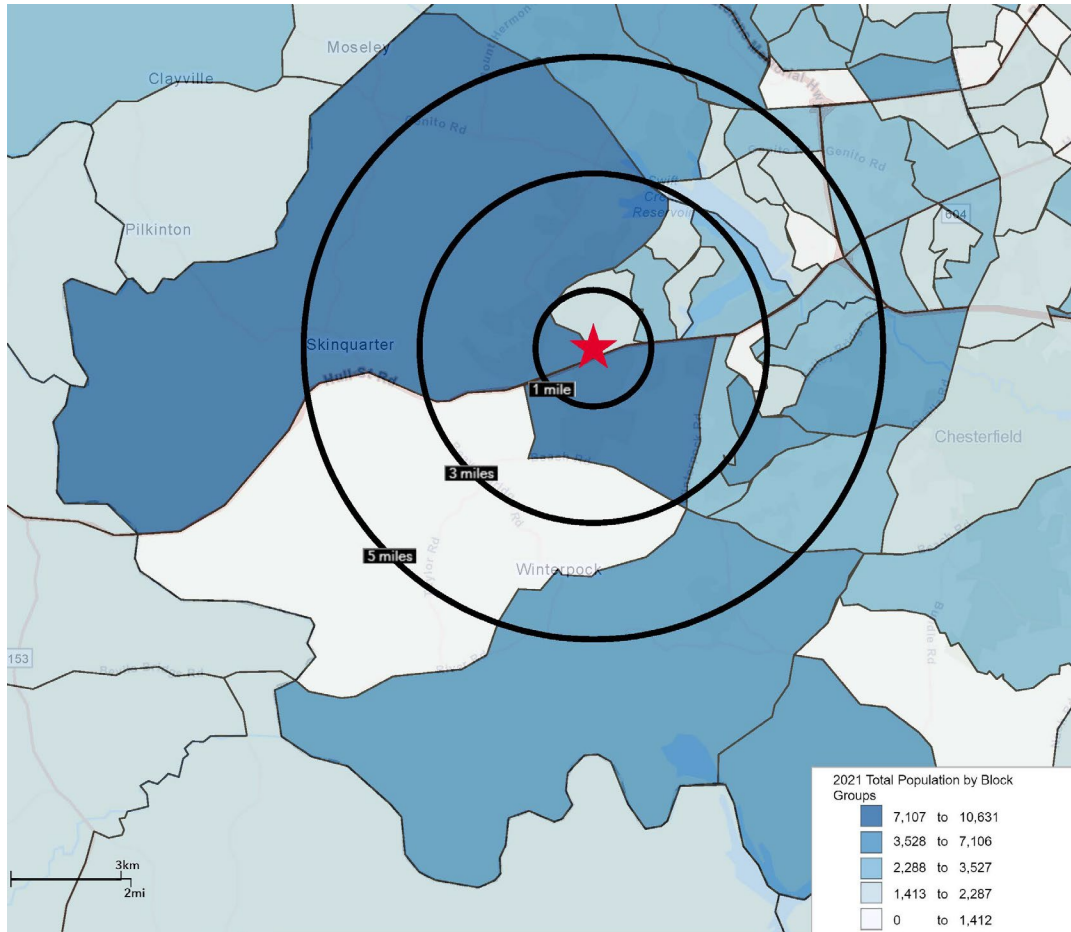
COSBY VILLAGE SQUARE

NOW LEASING & PRE-LEASING



COSBY VILLAGE SQUARE

NOW LEASING & PRE-LEASING



Demographics

	1 Mile	3 Miles	5 Miles
Population	7,709	39,644	78,137
No. of Households	2,360	13,419	27,563
Median HH Income	\$141,107	\$129,255	\$121,611
Avg. HH Income	\$175,906	\$164,885	\$155,210
Employees	1,262	8,147	18,798



78,137

5-MILES **POPULATION**



27,563

5-MILES **NO. OF HOUSEHOLDS**



\$175,906

1-MILE AVERAGE **HOUSEHOLD INCOME**



18,798

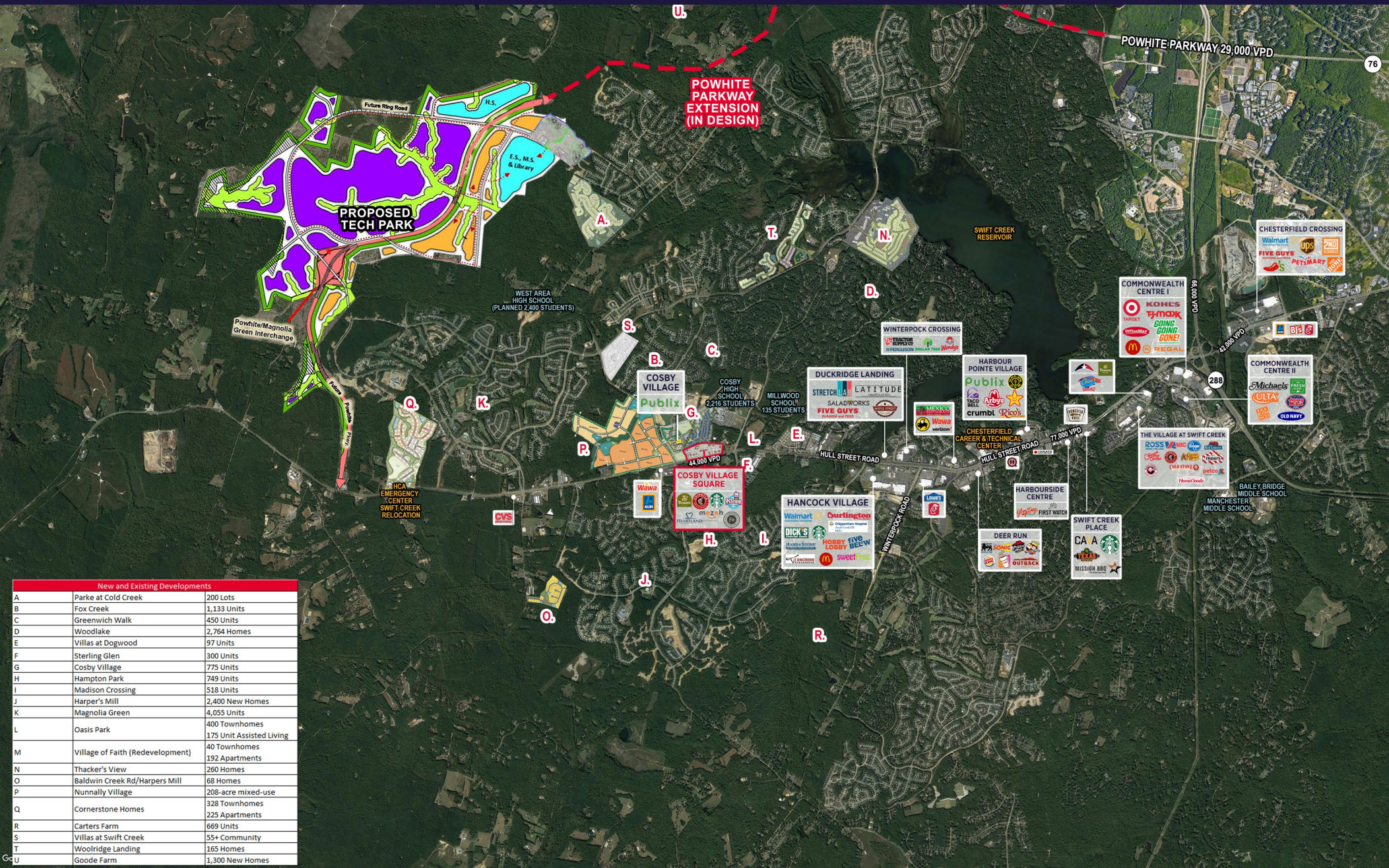
5-MILES **EMPLOYEES**

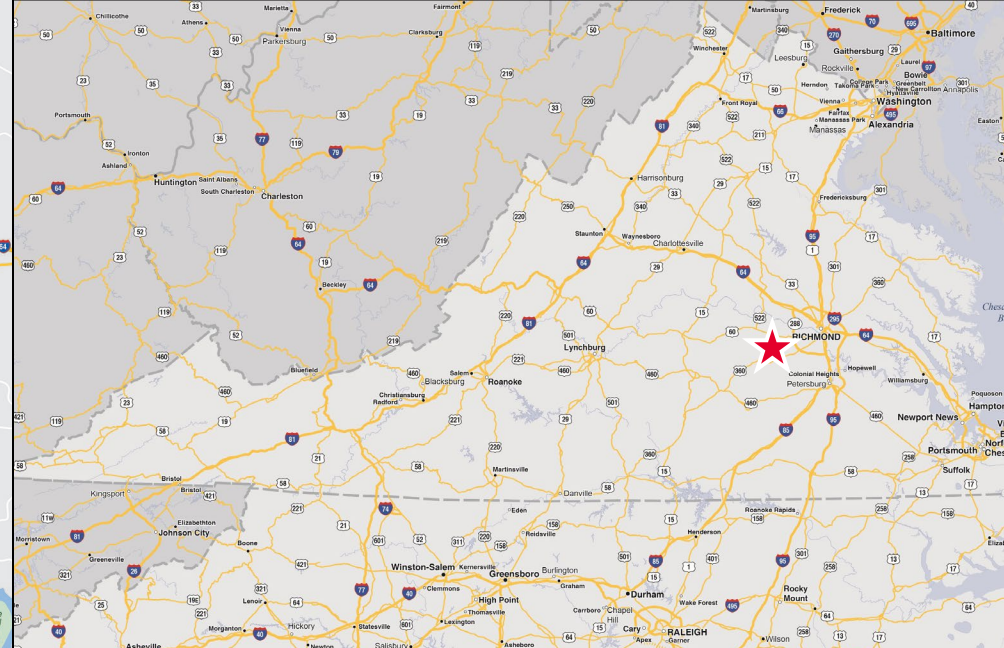
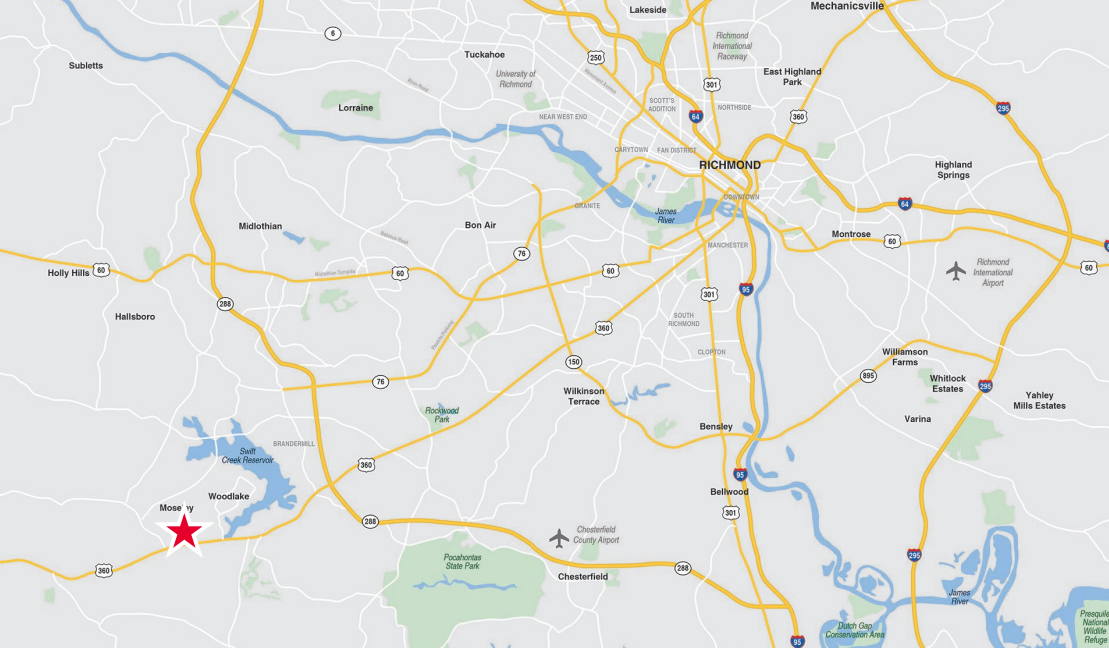


±10,000

NEW **HOMES APPROVED**

NOW LEASING & PRE-LEASING





COSBY VILLAGE SQUARE

For more information, please contact:

Connie Jordan Nielsen | connie.nielsen@thalhimer.com | 804 697 3569

Alicia Brown | alicia.brown@thalhimer.com | 804 697 3483

For office information, please contact:

Amy Broderick | amy.broderick@thalhimer.com | 804 344 7189



Thalhimer Center
1100 W. Broad Street
Glen Allen, VA 23060
thalhimer.com

Independently Owned and Operated / A Member of the Cushman & Wakefield Alliance

Cushman & Wakefield | Thalhimer © 2025. No warranty or representation, express or implied, is made to the accuracy or completeness of the information contained herein, and same is submitted subject to errors, omissions, change of price, rental or other conditions, withdrawal without notice, and to any special listing conditions imposed by the property owner(s). As applicable, we make no representation as to the condition of the property (or properties) in question.