

Cherry Hill Medical Center

548 15th Avenue Seattle WA 98122

TOTAL AVAILABLE SPACE – 28,084 RSF

AVAILABLE - DECEMBER 2024

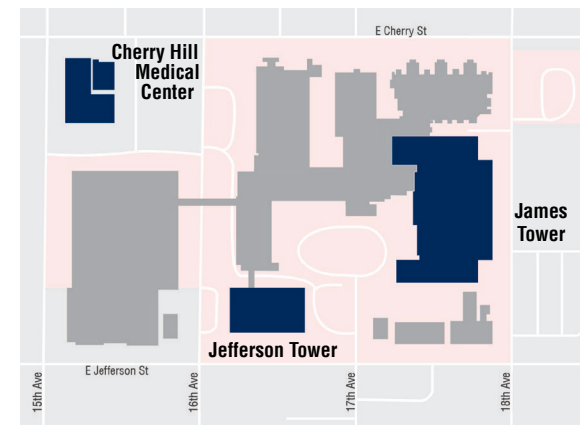


ON-CAMPUS MEDICAL OFFICE SPACE

The Cherry Hill Medical Center is a four story 28,000 square foot building located at the corner of 15th Avenue and East Cherry Street in Seattle. The ample ceiling height and open floor plans allow for a variety of uses including medical offices, clinics, ambulatory surgery centers, medical diagnostic services and specialized medical diagnostic services.

The Cherry Hill Medical Center is prominently featured at the gateway to the Providence Swedish Cherry Hill Medical Center with convenient access to the Swedish Heart Institute, the Swedish Neuroscience Institute, the Seattle Science Foundation, and the related medical support services provided on the campus. The Stand-Along nature of the property provides a unique signage opportunity for Tenants to establish a corporate identity at the center of Seattle's First Hill Medical District.

The proximity to the adjacent parking garage provides for a convenient and efficient environment for patients and busy healthcare professionals and staff.



Cherry Hill
Campus Map



visit us at [sabey.com](https://www.sabey.com)

Clete Casper
cletec@sabey.com
206.277.5229

Joe Sabey
joes@sabey.com
206.281.8700



12201 Tukwila International Blvd. 4th Floor
Seattle, WA 98168

Cherry Hill Medical Center

548 15th Avenue Seattle WA 98122

TOTAL AVAILABLE SPACE – 28,084 RSF

AVAILABLE - DECEMBER 2024



visit us at [sabey.com](https://www.sabey.com)

Clete Casper
cletec@sabey.com
206.277.5229

Joe Sabey
joes@sabey.com
206.281.8700



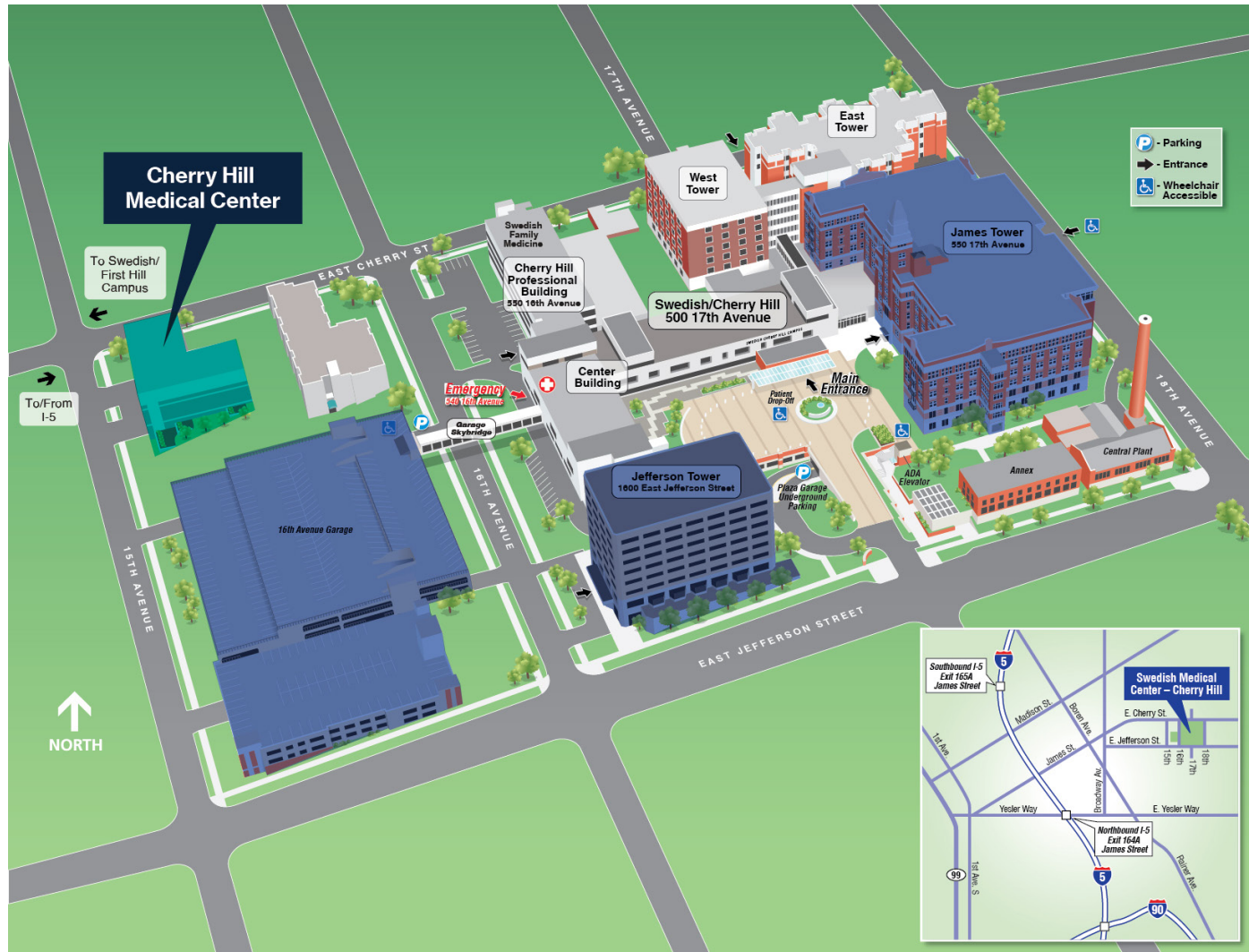
12201 Tukwila International Blvd. 4th Floor
Seattle, WA 98168

Cherry Hill Medical Center

548 15th Avenue Seattle WA 98122

TOTAL AVAILABLE SPACE – 28,084 RSF

AVAILABLE - DECEMBER 2024



visit us at sabey.com

Clete Casper
 cletec@sabey.com
 206.277.5229

Joe Sabey
 joes@sabey.com
 206.281.8700



12201 Tukwila International Blvd. 4th Floor
 Seattle, WA 98168

Cherry Hill Medical Center

548 15th Avenue Seattle WA 98122

TOTAL AVAILABLE SPACE – 28,084 RSF

AVAILABLE - DECEMBER 2024

BRIEFING SPECIFICATION

Year Constructed:
2007

Construction Type:

- Slab on Grade with Steel Frame / Concrete Metal Decking
- Exterior Precast Panels and Glazing System
- 20' by 25' Column Spacing

Floor Height:

- Floor 1 – 17'
- Floors 2-4 – 13'

Floor load:

80 psf + 20 psf partition load

Elevator:

2 Passenger Elevators

Loading Door:

10' X 9" on grade roll up door.

Power:

1,200 Amps, 480, 277

Generator:

500 kW Back Up Generator.

HVAC:

90 Ton Roof Top HVAC Unit.



15TH STREET ELEVATION - WEST

Floor 4 | Available space - 7,523 rsf

Floor 3 | Available space - 7,548 rsf

Floor 2 | Available space - 7,412 rsf

Floor 1 | Available space - 5,601 rsf



visit us at sabey.com

Clete Casper
cletec@sabey.com
206.277.5229

Joe Sabey
joes@sabey.com
206.281.8700



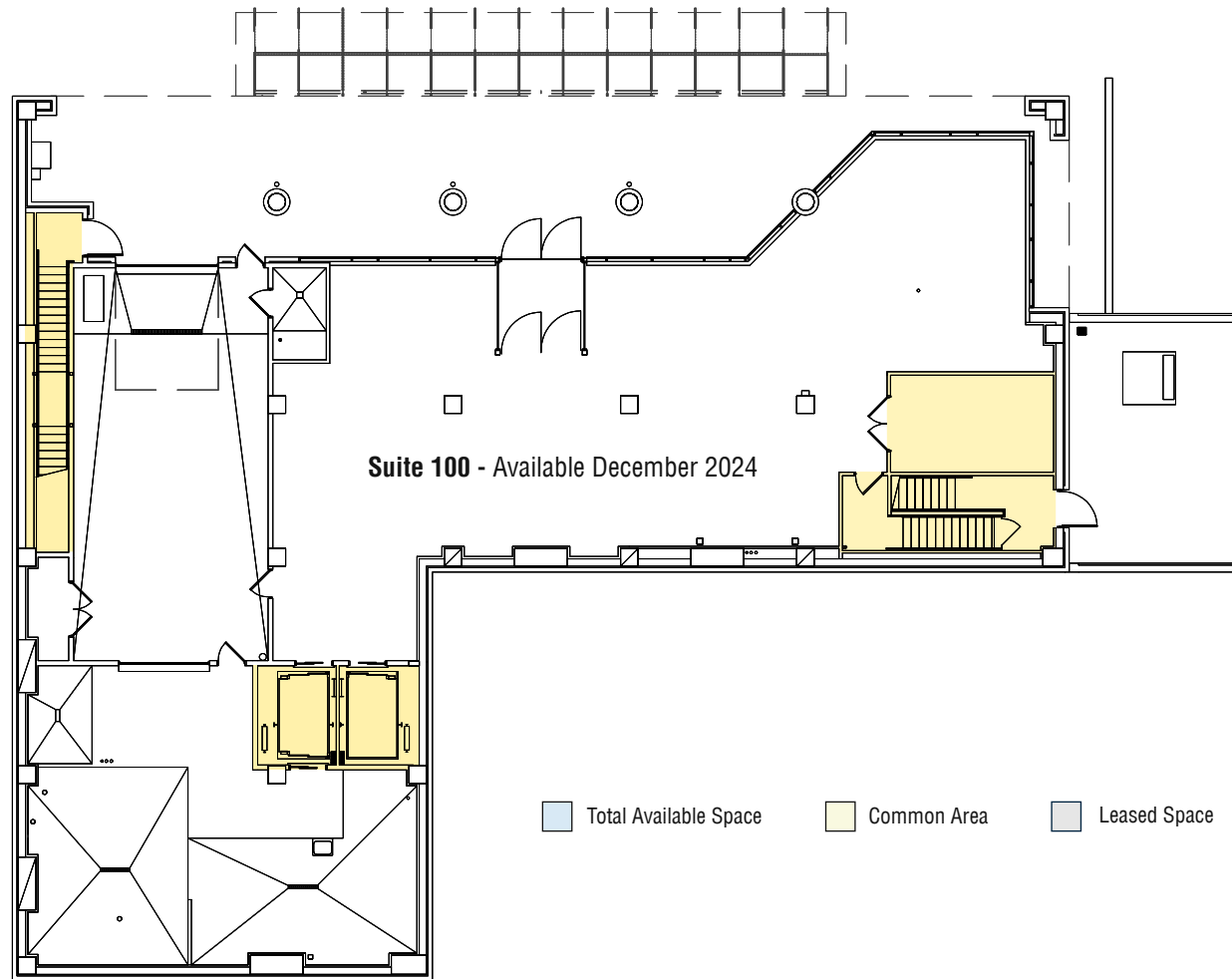
12201 Tukwila International Blvd. 4th Floor
Seattle, WA 98168

Cherry Hill Medical Center

548 15th Avenue Seattle WA 98122

TOTAL AVAILABLE SPACE – 28,084 RSF

AVAILABLE - DECEMBER 2024



visit us at [sabey.com](https://www.sabey.com)

Clete Casper
cletec@sabey.com
206.277.5229

Joe Sabey
joes@sabey.com
206.281.8700



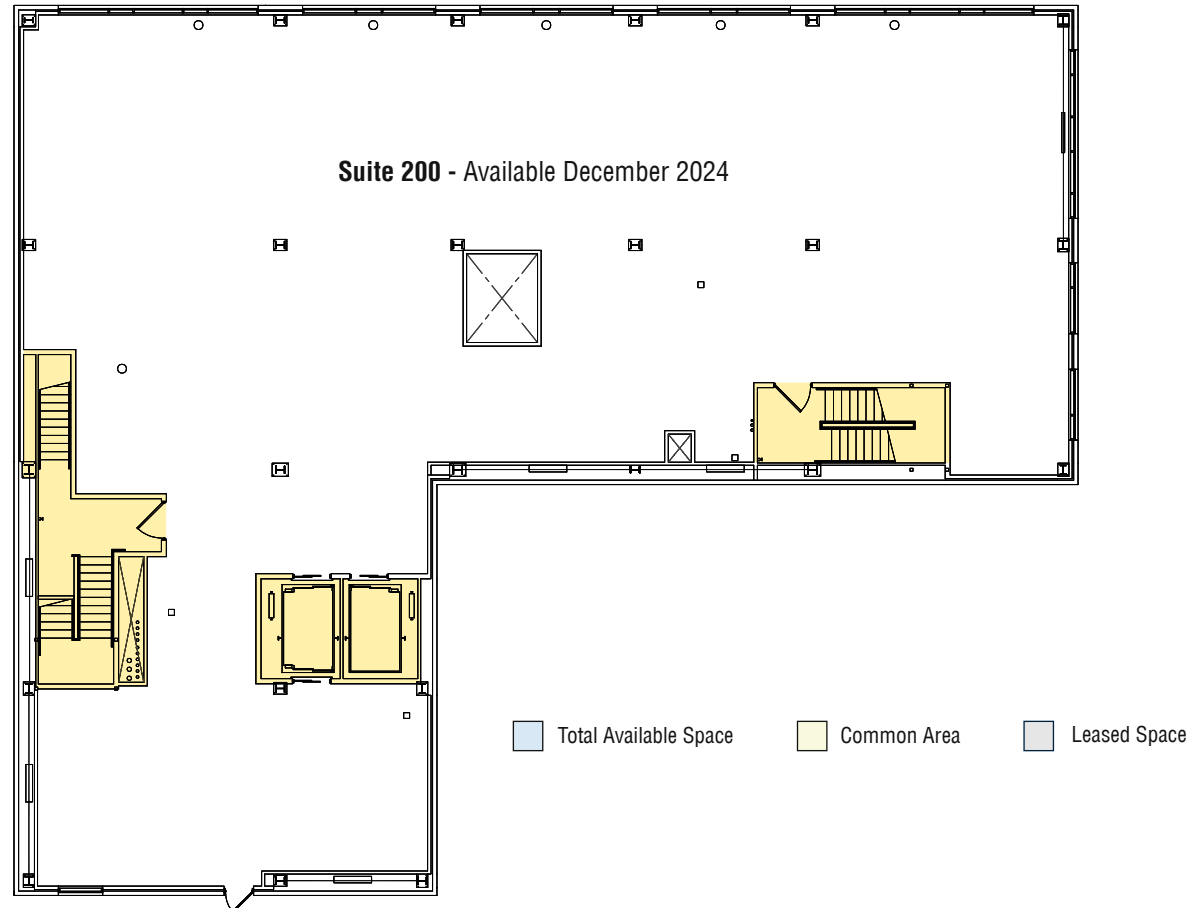
12201 Tukwila International Blvd. 4th Floor
Seattle, WA 98168

Cherry Hill Medical Center

548 15th Avenue Seattle WA 98122

TOTAL AVAILABLE SPACE – 28,084 RSF

AVAILABLE - DECEMBER 2024



visit us at [sabey.com](https://www.sabey.com)

Clete Casper
cletec@sabey.com
206.277.5229

Joe Sabey
joes@sabey.com
206.281.8700



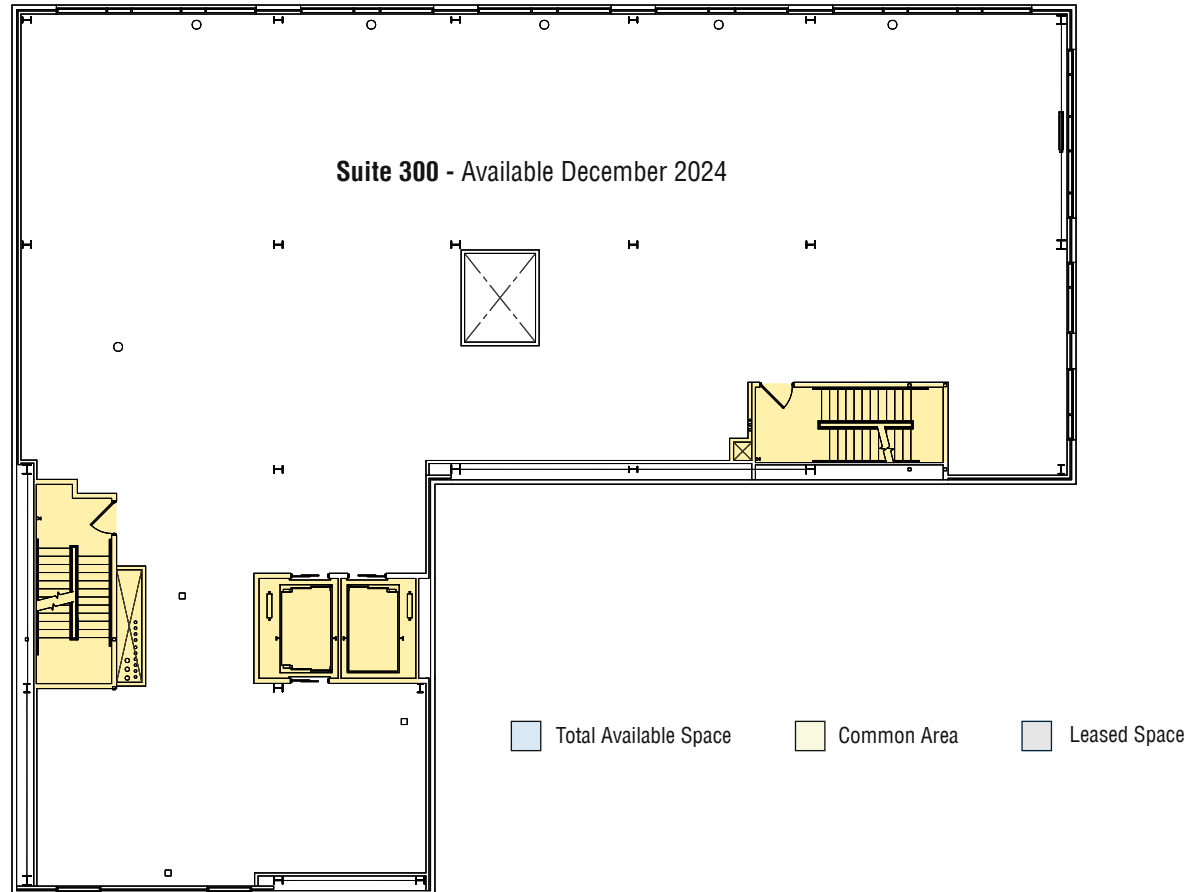
12201 Tukwila International Blvd. 4th Floor
Seattle, WA 98168

Cherry Hill Medical Center

548 15th Avenue Seattle WA 98122

TOTAL AVAILABLE SPACE – 28,084 RSF

AVAILABLE - DECEMBER 2024



visit us at [sabey.com](https://www.sabey.com)

Clete Casper
cletec@sabey.com
206.277.5229

Joe Sabey
joes@sabey.com
206.281.8700



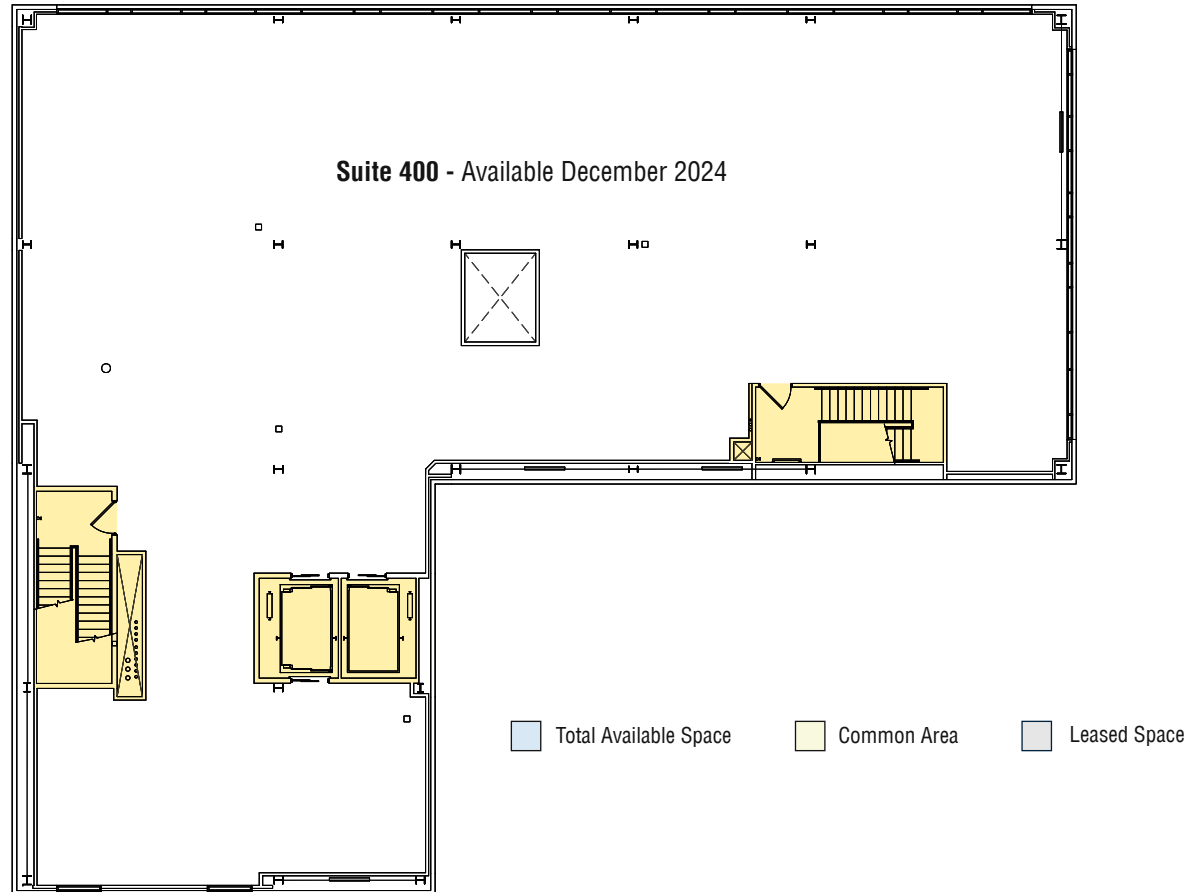
12201 Tukwila International Blvd. 4th Floor
Seattle, WA 98168

Cherry Hill Medical Center

548 15th Avenue Seattle WA 98122

TOTAL AVAILABLE SPACE – 28,084 RSF

AVAILABLE - DECEMBER 2024



visit us at [sabey.com](https://www.sabey.com)

Clete Casper
cletec@sabey.com
206.277.5229

Joe Sabey
joes@sabey.com
206.281.8700



12201 Tukwila International Blvd. 4th Floor
Seattle, WA 98168