



PONDVIEW
PLAZA

5850 Opus Parkway, Minnetonka, MN

Location. Connectivity. Prestige.

RENT READY - AVAILABLE SUITE



Suite 130
9,829 SF

[Click to View Virtual Tour](#)

- Rent ready with new Class A finishes and FF&E in place
- Corner space and premium lobby entrance

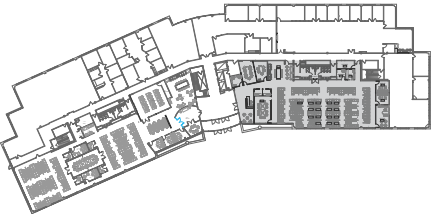
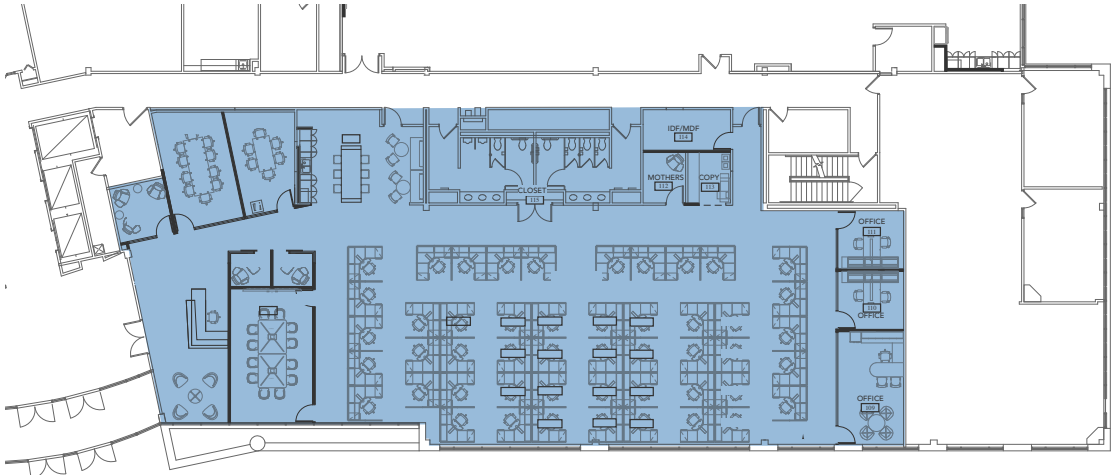


RENT READY - AVAILABLE SUITE

PONDVIEW PLAZA

5850 Opus Parkway
Minnetonka, MN 55343

SUITE 160 - 7,941 SF



- Rent ready with new Class A finishes and FF&E in place
- Premium lobby entrance and extensive glass line



Leasing Contacts

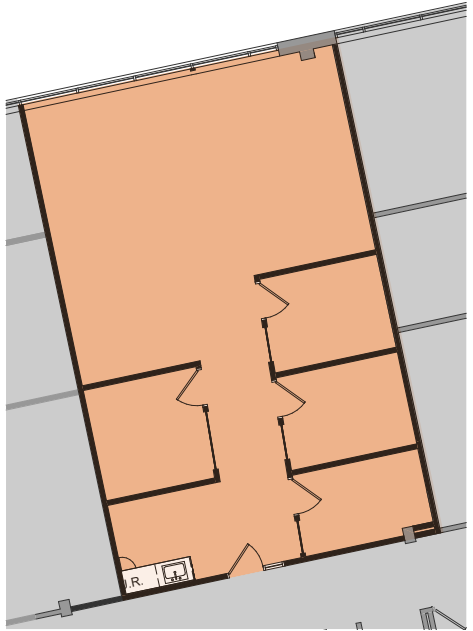
Suite 160
7,941 SF

Brent Karkula
+1 612 217 5153
brent.karkula@amjll.com

Laura Farrell
+1 612 217 6744
laura.farrell@amjll.com

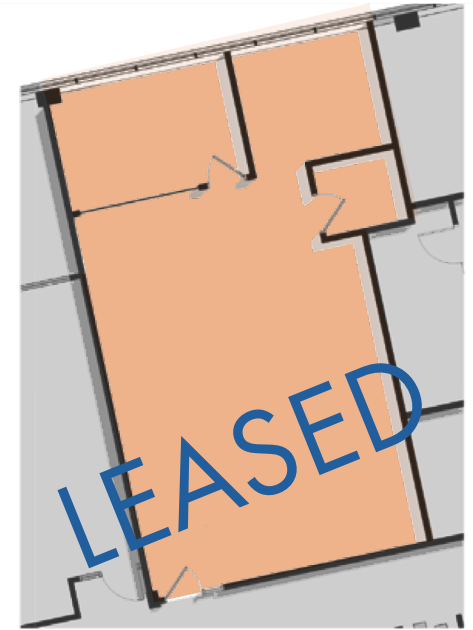
[Click to View Virtual Tour](#)

ADDITIONAL AVAILABLE SUITES



Suite 114 | 1,357 SF

- Convenient first floor location
- Views of adjacent pond



Suite 205 | 1,224 SF

- 2nd story views of adjacent pond
- Interior glass fronts maximizes natural light



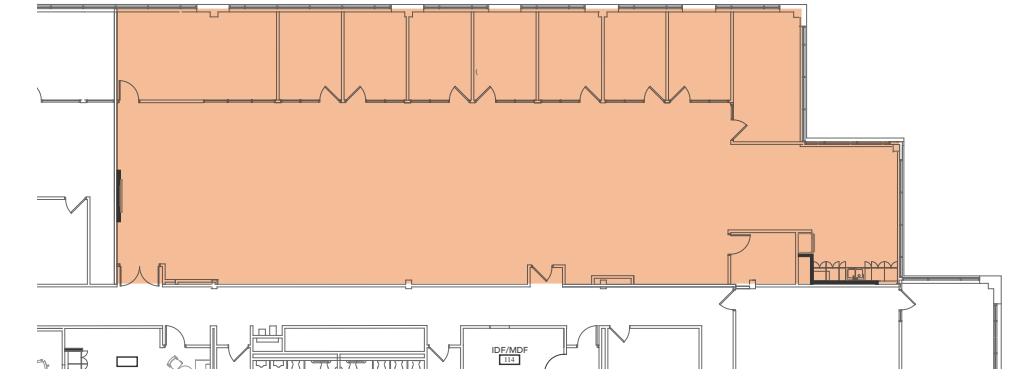
Suite 245 | 2,921 SF

- Location adjacent to building cafe
- Future conferencing center to be located next door



Suite 215 | 2,615 SF

- Class A+ interior finishes
- Dramatic open ceiling and extensive use of glass fronts



Suite 190 | 5,675 SF

- Corner space with long views of adjacent pond
- Custom build opportunity

PONDVIEW
PLAZA

5850 Opus Parkway, Minnetonka, MN

New Ownership

EXCELSIOR
◆ *The Excelsior Group*

BRENT KARKULA
+1 612 217 5153
brent.karkula@jll.com

LAURA FARRELL
+1 612 217 6744
laura.farrell@jll.com

Leased by:

