



# 356 BOWERY NOHO, NYC

Between Great Jones and 4th Street

**APPROXIMATE SIZE**

1,500 SF

**ASKING PRICE**

Upon Request

**OCCUPANCY**

Immediate

**TRANSPORTATION**

4 5 6 B D F M R W

**TERM**

Negotiable

**FRONTAGE**

10 FT

**COMMENTS:**

- Brand New Renovation with Great Natural Light
- Efficient, Column-Free Layout Maximizes Usability
- Prime Noho space with great foot and driving traffic
- Brand-new HVAC, electric (400 amps), plumbing and gas lines
- Strategically Positioned Between Great Jones Street and Bond Street

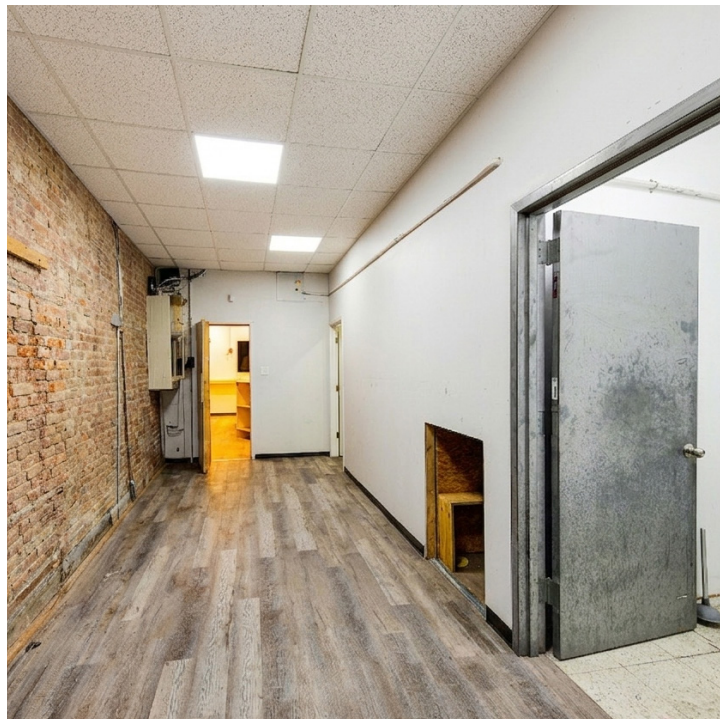
**BEN BIBERAJ**  
President of Retail Leasing  
703.434.1461  
bbiberaj@iprg.com

**BRANDON EFAP**  
Senior Director  
917.312.0291  
befap@iprg.com

**RUSSELL KOLEN**  
Associate  
718.360.0695  
rkolen@iprg.com

This information has been secured from sources we believe to be reliable, but we make no representations or warranties, expressed or implied, as to the accuracy of the information. References to square footage, age, zoning, lot size are approximate. Buyer must verify the information and bears all risk for any inaccuracies, including the regulatory status of apartments. Any projections, opinions, assumptions or estimates used herein are for example purposes only and do not represent the current or future performance of the property.

### INTERIOR PHOTOS



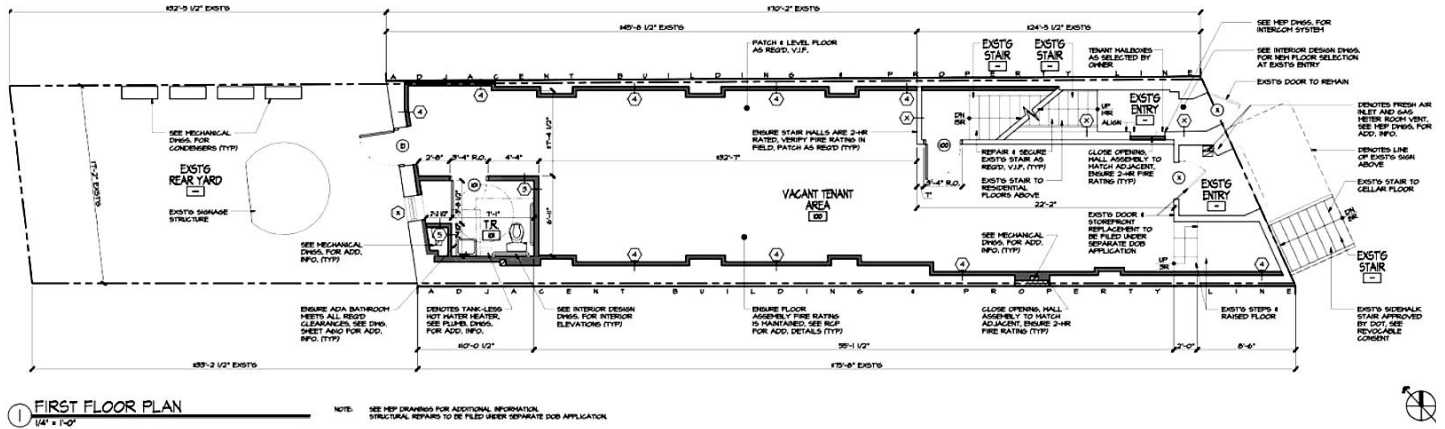
**BEN BIBERAJ**  
President of Retail Leasing  
703.434.1461  
bbiberaj@iprg.com

**BRANDON EFAP**  
Senior Director  
917.312.0291  
befap@iprg.com

**RUSSELL KOLEN**  
Associate  
718.360.0695  
rkolen@iprg.com

This information has been secured from sources we believe to be reliable, but we make no representations or warranties, expressed or implied, as to the accuracy of the information. References to square footage, age, zoning, lot size are approximate. Buyer must verify the information and bears all risk for any inaccuracies, including the regulatory status of apartments. Any projections, opinions, assumptions or estimates used herein are for example purposes only and do not represent the current or future performance of the property.

### FLOOR PLANS



**BEN BIBERAJ**  
President of Retail Leasing  
703.434.1461  
bbiberaj@iprg.com

**BRANDON EFAP**  
Senior Director  
917.312.0291  
befap@iprg.com

**RUSSELL KOLEN**  
Associate  
718.360.0695  
rkolen@iprg.com

This information has been secured from sources we believe to be reliable, but we make no representations or warranties, expressed or implied, as to the accuracy of the information. References to square footage, age, zoning, lot size are approximate. Buyer must verify the information and bears all risk for any inaccuracies, including the regulatory status of apartments. Any projections, opinions, assumptions or estimates used herein are for example purposes only and do not represent the current or future performance of the property.

## NEIGHBORS

**356 BOWERY**

**Streets:** E 7TH ST, E 6TH ST, E 5TH ST, E 4TH ST, GREAT JONES ST, E 3RD ST, E 2ND ST, E 1ST ST, E HOUSTON ST, BROADWAY, LAFAYETTE ST, BOWERY, 2ND AVE.

**Neighbors:** luckin coffee, \*PRET A MANGER\*, fresh & CO, SPRING CAFE ASPEN, THINK COFFEE, DIG INN, STARBUCKS, GREGORYS COFFEE, Tucci NEW YORK, CHIPOTLE MEXICAN GRILL, Raising Cane's, McDonald's, The Donut Pub, La COLOMBE COFFEE ROASTERS, Indochine, BLANK STREET, Lafayette BAKERY & CAFE, The Nines, BONDST, BLEECKER STREET BAR, Levain BAKERY, VanLeeuwen, TEMPLE BAR, LIFETIME FITNESS, BARRY'S, jean's, MITRIZZI RESTAURANT, Vic's, JAC 12 on bond, THE WREN, BUDDY, FISH CHEEKS, BOND ST, JOE & THE JUICE, KITH, THINK COFFEE, TACOMBI, CVS pharmacy, Raf's, Hani's, McSORLEY'S OLD ALE HOUSE ESTABLISHED 1854, COFFEE PROJECT NEW YORK, PLEED BROS FINEST COFFEE CO., LA LA BAKESHOP, DokoDemo Japanese Grill, Via Della Pace, SG, PLANT MADE., LA VERA PIZZERIA ITALIAN RESTAURANT, WILD HORSE BAR GRILL, BOILER ROOM, Sweet LINDA, BLUE RIBBON FRIED CHICKEN, JETSET MODERN PILATES, BAAR BAAR INDIAN GASTRO BAR.

45 Broadway  
29th Floor  
New York, NY 10006  
718.360.8801

**IPRG**  
RETAIL LEASING

**BEN BIBERAJ**  
President of Retail Leasing  
703.434.1461  
bbiberaj@iprg.com

**BRANDON EFAP**  
Senior Director  
917.312.0291  
befap@iprg.com

**RUSSELL KOLEN**  
Associate  
718.360.0695  
rkolen@iprg.com

This information has been secured from sources we believe to be reliable, but we make no representations or warranties, expressed or implied, as to the accuracy of the information. References to square footage, age, zoning, lot size are approximate. Buyer must verify the information and bears all risk for any inaccuracies, including the regulatory status of apartments. Any projections, opinions, assumptions or estimates used herein are for example purposes only and do not represent the current or future performance of the property.