

Property For Lease

300 Hempstead Tpke

300 Hempstead Tpke West Hempstead, NY 11552



For More Information:



Christopher Pesce

Associate Broker
Douglas Elliman Commercial - Long Island
631.858.2470
christopher.pesce@elliman.com



Kenneth Hester

Licensed Real Estate Salesperson
Douglas Elliman Commercial - Long Island
516.641.0342
kenneth.hester@elliman.com

WWW.ELLIMANCOMMERCIAL.COM

THE PROPERTY CONTAINED WITHIN THIS DOCUMENT IS BEING EXCLUSIVELY REPRESENTED BY DOUGLAS ELLIMAN REAL ESTATE COMMERCIAL DIVISION, 650 SMITHTOWN BYPASS STE. 117 SMITHTOWN, NY 11787 631.858.2405 © 2023 DOUGLAS ELLIMAN COMMERCIAL OF LI, LLC. ALL MATERIAL PRESENTED HEREIN IS INTENDED FOR INFORMATION PURPOSES ONLY. WHILE THIS INFORMATION IS BELIEVED TO BE CORRECT, IT IS REPRESENTED SUBJECT TO ERRORS, OMISSIONS, CHANGES OR WITHDRAWAL WITHOUT NOTICE. ALL PROPERTY INFORMATION, INCLUDING, BUT NOT LIMITED TO SQUARE FOOTAGE, ROOM COUNT, ZONING IN THE LISTING SHOULD BE VERIFIED BY YOUR OWN ATTORNEY, ARCHITECT OR ZONING EXPERT. IF YOUR PROPERTY IS CURRENTLY LISTED WITH ANOTHER REAL ESTATE BROKER, PLEASE DISREGARD THIS OFFER. IT IS NOT OUR INTENTION TO SOLICIT THE OFFERINGS OF OTHER REAL ESTATE BROKERS. WE COOPERATE WITH THEM FULLY. EQUAL HOUSING OPPORTUNITY.



Office Property For Lease

300 Hempstead Tpke West Hempstead, NY 11552



Offering Summary

Lease Rate:	Price Upon Request
Building Size:	52,850 SF
Available SF:	260 - 1,412 SF
Year Built:	1966
Traffic Count:	21,832

Property Overview

Position your business for success at 300 Hempstead Turnpike in West Hempstead, featuring five versatile office suites ideal for professional use. Enjoy ample on-site parking, prominent signage visibility, and a diverse mix of neighboring tenants that bring energy and opportunity to the property. With its prime location and business-friendly environment, this is the perfect place to establish, grow, and thrive.

Property Highlights

- Modern and versatile spaces
- Ample parking for employees and clients
- Convenient access to major roadways
- High visibility and signage opportunities

For More Information:

Christopher Pesce



Associate Broker
Douglas Elliman Commercial - Long Island
631.858.2470
christopher.pesce@elliman.com

Kenneth Hester



Licensed Real Estate Salesperson
Douglas Elliman Commercial - Long Island
516.641.0342
kenneth.hester@elliman.com

 **DouglasElliman**
Commercial



WWW.ELLIMANCOMMERCIAL.COM

THE PROPERTY CONTAINED WITHIN THIS DOCUMENT IS BEING EXCLUSIVELY REPRESENTED BY DOUGLAS ELLIMAN REAL ESTATE COMMERCIAL DIVISION, 550 SMITHTOWN BYPASS STE. 117 SMITHTOWN, NY 11787 631.858.2405 © 2023 DOUGLAS ELLIMAN COMMERCIAL OF LI, LLC. ALL MATERIAL PRESENTED HEREIN IS INTENDED FOR INFORMATION PURPOSES ONLY. WHILE THIS INFORMATION IS BELIEVED TO BE CORRECT, IT IS REPRESENTED SUBJECT TO ERRORS, OMISSIONS, CHANGES OR WITHDRAWAL WITHOUT NOTICE. ALL PROPERTY INFORMATION, INCLUDING, BUT NOT LIMITED TO SQUARE FOOTAGE, ROOM COUNT, ZONING IN THE LISTING SHOULD BE VERIFIED BY YOUR OWN ATTORNEY, ARCHITECT OR ZONING EXPERT. IF YOUR PROPERTY IS CURRENTLY LISTED WITH ANOTHER REAL ESTATE BROKER, PLEASE DISREGARD THIS OFFER. IT IS NOT OUR INTENTION TO SOLICIT THE OFFERINGS OF OTHER REAL ESTATE BROKERS. WE COOPERATE WITH THEM FULLY. EQUAL HOUSING OPPORTUNITY.

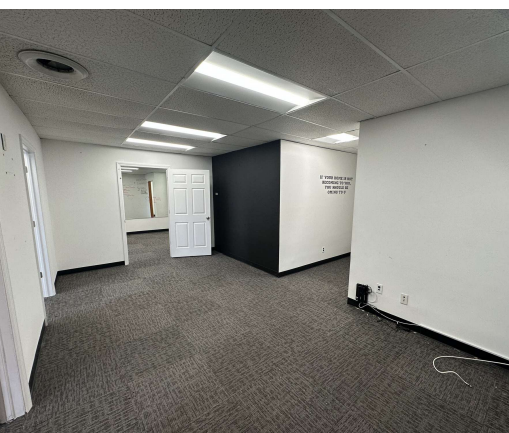


Office Property For Lease

300 Hempstead Tpke West Hempstead, NY 11552



	Suite 101
	Suite 102
Kissenia Creativity Photo Studio	Suite 103
Ameristar Home Care	Suite 105
THE GAMES HOUSE, INC.	Suite 110
S U KIDS TRANSPORTATION SERVICE 516-778-1552	Suite 111
	Suite 118
	Suite 120
	Suite 122
	Suite 124
SECOND FLOOR	
JOSKEN LIFE STUDIO	Suite 204
SCALP MICROPIGMENTATION 516-828-0419	Suite 203
PETK INC	Suite 202
FAMILY SERVICE LEAGUE	Suite 206
CARICO INTERNATIONAL, INC.	Suite 207
	Suite 208
HANDS ON RESTORATION, LLC	Suite 209
WALTON DRUG CORP	Suite 21
PROFESSIONAL CAREER INSTITUTE	Suite 216
Ramshaa's DRIVING SCHOOL, INC.	Suite 217
	Suite 218



For More Information:

Christopher Pesce

Associate Broker
Douglas Elliman Commercial - Long Island
631.858.2470
christopher.pesce@elliman.com

Kenneth Hester

Licensed Real Estate Salesperson
Douglas Elliman Commercial - Long Island
516.641.0342
kenneth.hester@elliman.com

Douglas Elliman
Commercial



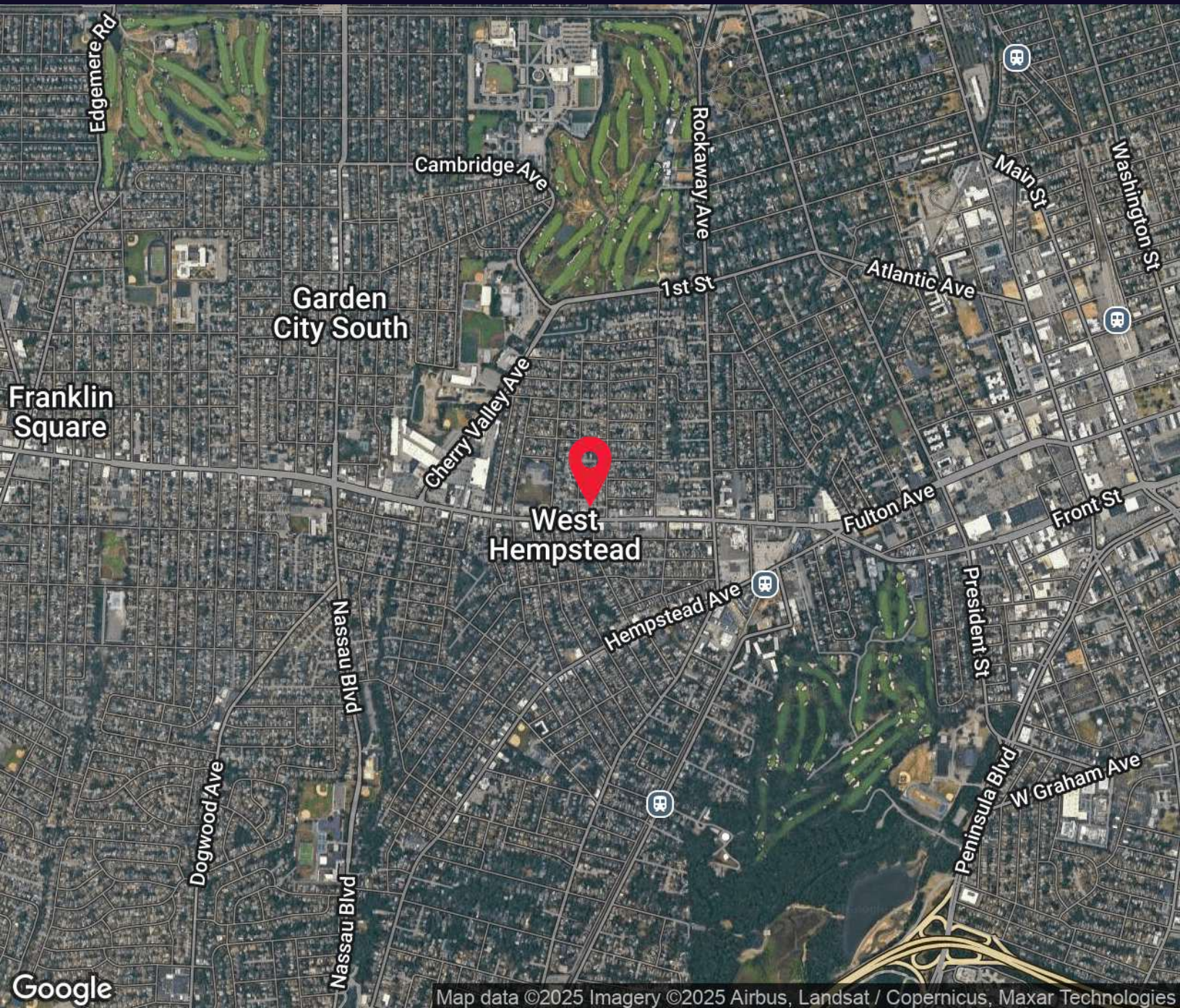
WWW.ELLIMANCOMMERCIAL.COM

THE PROPERTY CONTAINED WITHIN THIS DOCUMENT IS BEING EXCLUSIVELY REPRESENTED BY DOUGLAS ELLIMAN REAL ESTATE COMMERCIAL DIVISION, 550 SMITHTOWN BYPASS STE. 117 SMITHTOWN, NY 11787 631.858.2405 © 2023 DOUGLAS ELLIMAN COMMERCIAL OF LI, LLC. ALL MATERIAL PRESENTED HEREIN IS INTENDED FOR INFORMATION PURPOSES ONLY. WHILE THIS INFORMATION IS BELIEVED TO BE CORRECT, IT IS REPRESENTED SUBJECT TO ERRORS, OMISSIONS, CHANGES OR WITHDRAWAL WITHOUT NOTICE. ALL PROPERTY INFORMATION, INCLUDING, BUT NOT LIMITED TO SQUARE FOOTAGE, ROOM COUNT, ZONING IN THE LISTING SHOULD BE VERIFIED BY YOUR OWN ATTORNEY, ARCHITECT OR ZONING EXPERT. IF YOUR PROPERTY IS CURRENTLY LISTED WITH ANOTHER REAL ESTATE BROKER, PLEASE DISREGARD THIS OFFER. IT IS NOT OUR INTENTION TO SOLICIT THE OFFERINGS OF OTHER REAL ESTATE BROKERS. WE COOPERATE WITH THEM FULLY. EQUAL HOUSING OPPORTUNITY.



Office Property For Lease

300 Hempstead Tpke West Hempstead, NY 11552



For More Information:



Christopher Pesce

Associate Broker
Douglas Elliman Commercial - Long Island
631.858.2470
christopher.pesce@elliman.com



Kenneth Hester

Licensed Real Estate Salesperson
Douglas Elliman Commercial - Long Island
516.641.0342
kenneth.hester@elliman.com

 **Douglas Elliman**
Commercial



WWW.ELLIMANCOMMERCIAL.COM

THE PROPERTY CONTAINED WITHIN THIS DOCUMENT IS BEING EXCLUSIVELY REPRESENTED BY DOUGLAS ELLIMAN REAL ESTATE COMMERCIAL DIVISION, 550 SMITHTOWN BYPASS STE. 117 SMITHTOWN, NY 11787 631.858.2405 © 2023 DOUGLAS ELLIMAN COMMERCIAL OF LI, LLC. ALL MATERIAL PRESENTED HEREIN IS INTENDED FOR INFORMATION PURPOSES ONLY. WHILE THIS INFORMATION IS BELIEVED TO BE CORRECT, IT IS REPRESENTED SUBJECT TO ERRORS, OMISSIONS, CHANGES OR WITHDRAWAL WITHOUT NOTICE. ALL PROPERTY INFORMATION, INCLUDING, BUT NOT LIMITED TO SQUARE FOOTAGE, ROOM COUNT, ZONING IN THE LISTING SHOULD BE VERIFIED BY YOUR OWN ATTORNEY, ARCHITECT OR ZONING EXPERT. IF YOUR PROPERTY IS CURRENTLY LISTED WITH ANOTHER REAL ESTATE BROKER, PLEASE DISREGARD THIS OFFER. IT IS NOT OUR INTENTION TO SOLICIT THE OFFERINGS OF OTHER REAL ESTATE BROKERS. WE COOPERATE WITH THEM FULLY. EQUAL HOUSING OPPORTUNITY.



Office Property For Lease

300 Hempstead Tpke West Hempstead, NY 11552



Lease Information

Lease Type:	MG	Lease Term:	Negotiable
Total Space:	260 - 1,412 SF	Lease Rate:	Price Upon Request

Available Spaces

Suite	Tenant	Size (SF)	Lease Type	Lease Rate	Description
202	Available	1,412 SF	Modified Gross	Price Upon Request	7 Private office suite with reception area, great for professional office
204	Available	400 SF	Modified Gross	Price Upon Request	2 Office suite with reception area, great for professional office.
206/207	Available	900 SF	Modified Gross	Price Upon Request	4 office suite with 2 entrances to the space with reception area, great for professional office.
105	Available	270 SF	Modified Gross	Price Upon Request	1 office that is great for professional office
124	Available	260 SF	Modified Gross	Price Upon Request	2 office suite, great for professional office.

For More Information:



Christopher Pesce

Associate Broker
Douglas Elliman Commercial - Long Island
631.858.2470
christopher.pesce@elliman.com



Kenneth Hester

Licensed Real Estate Salesperson
Douglas Elliman Commercial - Long Island
516.641.0342
kenneth.hester@elliman.com

 **DouglasElliman**
Commercial



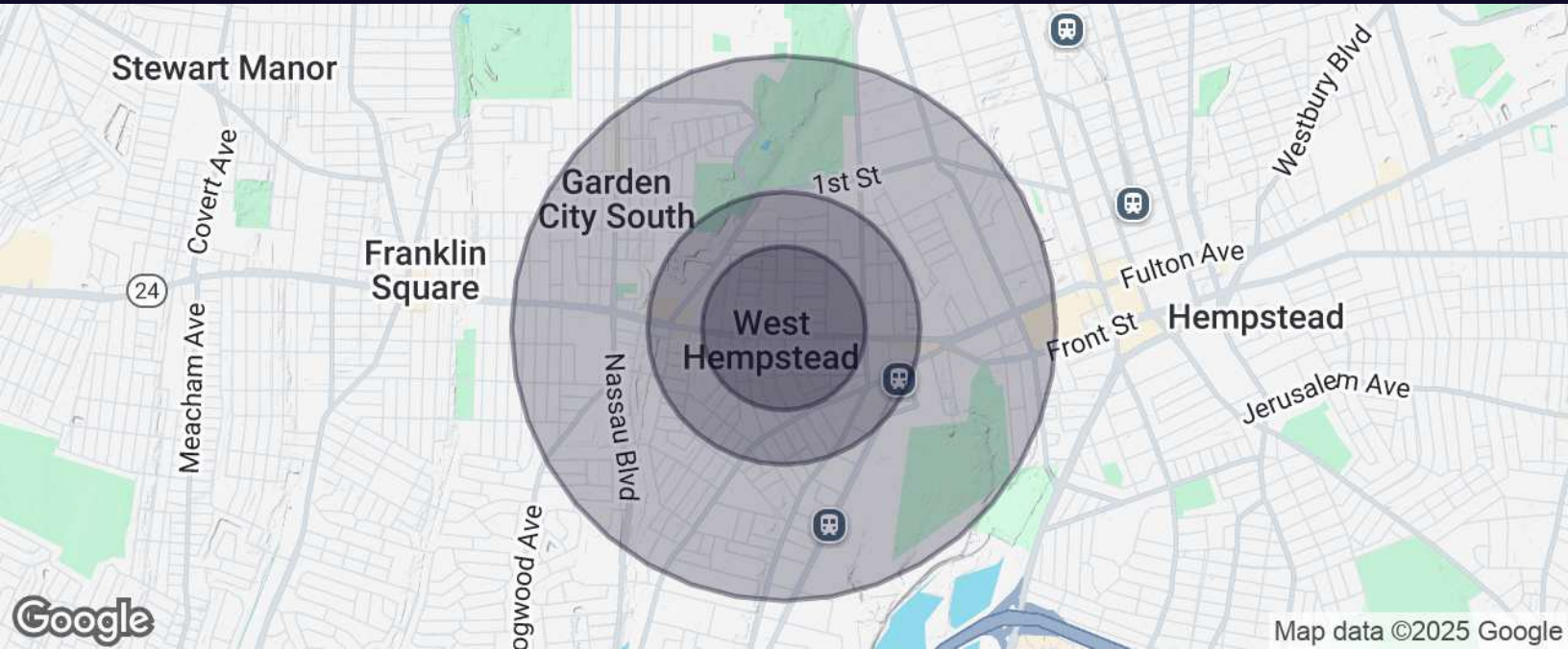
WWW.ELLIMANCOMMERCIAL.COM

THE PROPERTY CONTAINED WITHIN THIS DOCUMENT IS BEING EXCLUSIVELY REPRESENTED BY DOUGLAS ELLIMAN REAL ESTATE COMMERCIAL DIVISION, 550 SMITHTOWN BYPASS STE. 117 SMITHTOWN, NY 11787 631.858.2405 © 2023 DOUGLAS ELLIMAN COMMERCIAL OF LI, LLC. ALL MATERIAL PRESENTED HEREIN IS INTENDED FOR INFORMATION PURPOSES ONLY. WHILE THIS INFORMATION IS BELIEVED TO BE CORRECT, IT IS REPRESENTED SUBJECT TO ERRORS, OMISSIONS, CHANGES OR WITHDRAWAL WITHOUT NOTICE. ALL PROPERTY INFORMATION, INCLUDING, BUT NOT LIMITED TO SQUARE FOOTAGE, ROOM COUNT, ZONING IN THE LISTING SHOULD BE VERIFIED BY YOUR OWN ATTORNEY, ARCHITECT OR ZONING EXPERT. IF YOUR PROPERTY IS CURRENTLY LISTED WITH ANOTHER REAL ESTATE BROKER, PLEASE DISREGARD THIS OFFER. IT IS NOT OUR INTENTION TO SOLICIT THE OFFERINGS OF OTHER REAL ESTATE BROKERS. WE COOPERATE WITH THEM FULLY. EQUAL HOUSING OPPORTUNITY.



Office Property For Lease

300 Hempstead Tpke West Hempstead, NY 11552



Population	0.3 Miles	0.5 Miles	1 Mile
Total Population	2,812	6,410	24,121
Average Age	41	41	40
Average Age (Male)	40	40	39
Average Age (Female)	43	42	42

Households & Income	0.3 Miles	0.5 Miles	1 Mile
Total Households	845	1,963	7,582
# of Persons per HH	3.3	3.3	3.2
Average HH Income	\$172,141	\$176,635	\$159,492
Average House Value	\$662,792	\$680,910	\$660,745

For More Information:



Christopher Pesce

Associate Broker
Douglas Elliman Commercial - Long Island
631.858.2470
christopher.pesce@elliman.com



Kenneth Hester

Licensed Real Estate Salesperson
Douglas Elliman Commercial - Long Island
516.641.0342
kenneth.hester@elliman.com



WWW.ELLIMANCOMMERCIAL.COM

THE PROPERTY CONTAINED WITHIN THIS DOCUMENT IS BEING EXCLUSIVELY REPRESENTED BY DOUGLAS ELLIMAN REAL ESTATE COMMERCIAL DIVISION, 550 SMITHTOWN BYPASS STE. 117 SMITHTOWN, NY 11787 631.858.2405 © 2023 DOUGLAS ELLIMAN COMMERCIAL OF LI, LLC. ALL MATERIAL PRESENTED HEREIN IS INTENDED FOR INFORMATION PURPOSES ONLY. WHILE THIS INFORMATION IS BELIEVED TO BE CORRECT, IT IS REPRESENTED SUBJECT TO ERRORS, OMISSIONS, CHANGES OR WITHDRAWAL WITHOUT NOTICE. ALL PROPERTY INFORMATION, INCLUDING, BUT NOT LIMITED TO SQUARE FOOTAGE, ROOM COUNT, ZONING IN THE LISTING SHOULD BE VERIFIED BY YOUR OWN ATTORNEY, ARCHITECT OR ZONING EXPERT. IF YOUR PROPERTY IS CURRENTLY LISTED WITH ANOTHER REAL ESTATE BROKER, PLEASE DISREGARD THIS OFFER. IT IS NOT OUR INTENTION TO SOLICIT THE OFFERINGS OF OTHER REAL ESTATE BROKERS. WE COOPERATE WITH THEM FULLY. EQUAL HOUSING OPPORTUNITY.



WE ARE COMMERCIAL REAL ESTATE

Commercial real estate involves more than just property listings. To get the most effective results, you need to partner with a company that has a full complement of services and an in-depth team of professionals to help with all of your needs. Douglas Elliman's team of commercial real estate experts is committed to unrivaled performance standards when working with tenants, investors, purchasers and owners. We represent all major property types including office, industrial, retail, apartment and land. We treat each assignment with commitment and focus, from a single transaction in a local market to national and multi-market assignments. We help negotiate contracts, coordinate construction and provide both property management as well as ongoing advisory service to satisfy your changing real estate needs. Our breadth of market knowledge, unprecedented network and use of innovative technology extend to all types of property transactions.

For More Information:



Christopher Pesce

Associate Broker
631.858.2470
christopher.pesce@elliman.com



Kenneth Hester

Licensed Real Estate Salesperson
516.641.0342
kenneth.hester@elliman.com

Office: 631.858.2405
Fax: 631.543.0851
550 Smithtown Bypass
Smithtown, NY 11787