

PLAZA DE LA SIERRA

SEC MENAUL BLVD & PALOMAS DR
5504 Menaul Blvd NE Albuquerque, NM 87110



**FOR
LEASE**

AVAILABLE SPACE
3,021 SF

RATE
\$22.00 PSF NNN
NNNs* \$4.20
* Estimate provided by Landlord
and subject to change

Austin Tidwell, CCIM
atidwell@resolutre.com
505.337.0777

Daniel Kearney
dkearney@resolutre.com
505.337.0777

Rob Powell, CCIM
rpowell@resolutre.com
505.337.0777

PROPERTY HIGHLIGHTS

- Prominent end-cap space available
- Second generation medical space (former optometrist)
- Strong medical co-tenancy with Lovelace Urgent Care, Miracle-Ear and CosmoProf
- Modern stack-stone facade, pronounced pylon sign and great access to the center and parking
- High traffic center with over 28,000 VPD on Menaul Blvd



AREA TRAFFIC GENERATORS



Austin Tidwell, CCIM

atidwell@resolutre.com | 505.337.0777

Daniel Kearney

dkearney@resolutre.com | 505.337.0777

Rob Powell, CCIM

rpowell@resolutre.com | 505.337.0777

DEMOGRAPHIC SNAPSHOT 2025



12,4377
POPULATION
3-MILE RADIUS



\$83,008.00
AVG HH INCOME
3-MILE RADIUS

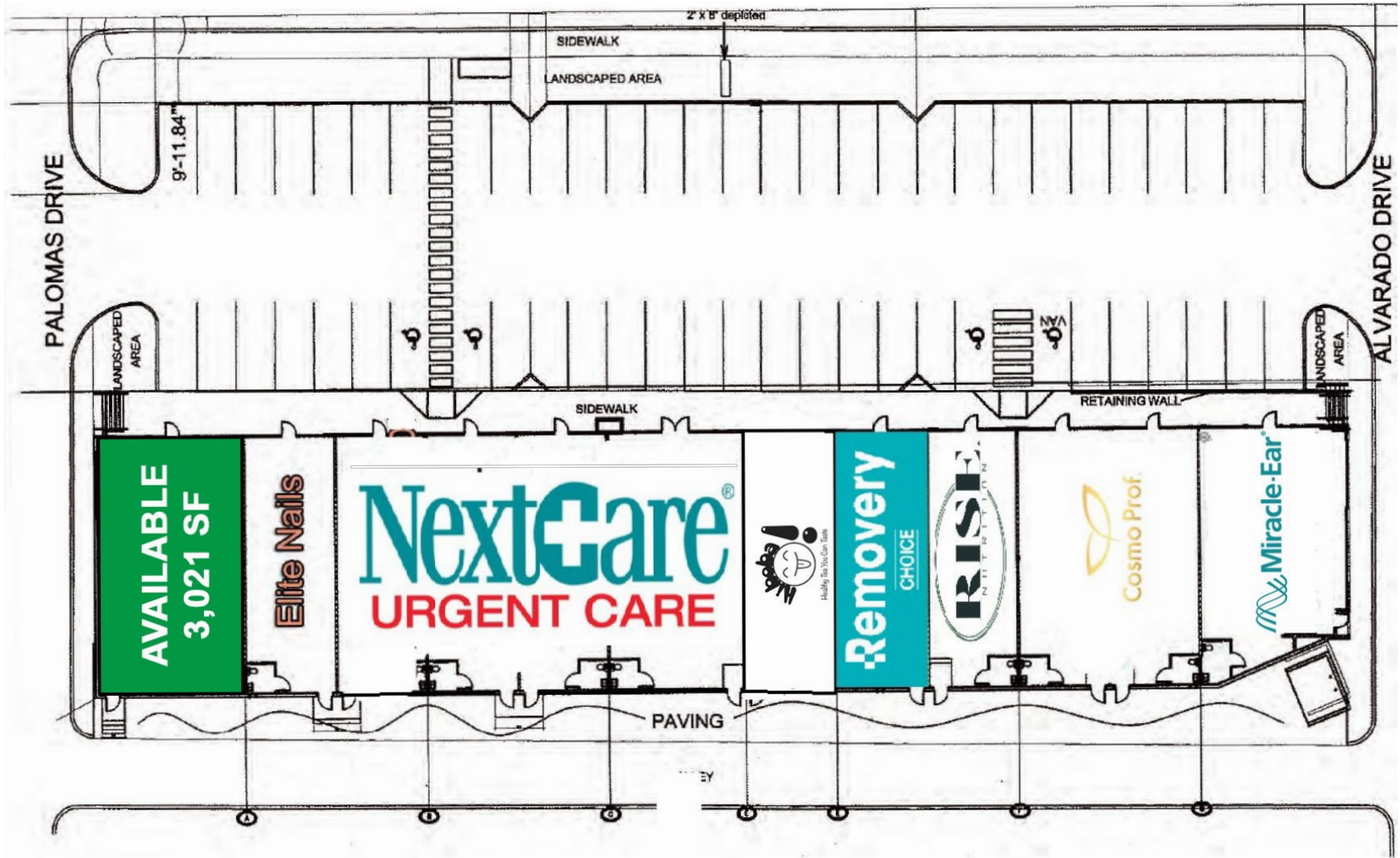


146,979
DAYTIME POPULATION
3-MILE RADIUS

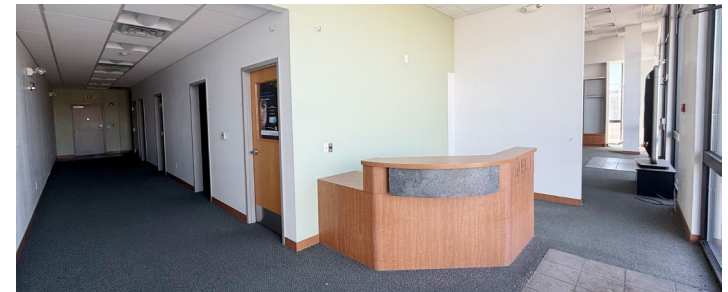
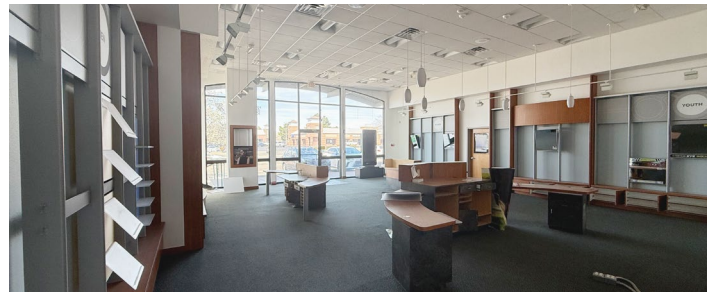


TRAFFIC COUNTS
Menaul Blvd: 28,879 VPD
(Sites USA 2025)

PLAZA DE LA SIERRA | 5504 Menaul Boulevard Northeast Albuquerque, NM 87110



PLAZA DE LA SIERRA | 5504 Menaul Boulevard Northeast Albuquerque, NM 87110





PLAZA DE LA SIERRA | 5504 Menaul Boulevard Northeast Albuquerque, NM 87110

