



**FOR LEASE**

# 360 Harmon Ave.

**360 HARMON AVE.  
LEBANON, OH 45036**

## Available Space

±40,087 SF

## Office Space

±4,000 SF

## Lease Rate

\$6.95

## Operating Expenses

\$1.41/SF

## Available

Immediately

## Property Highlights

- 19'-26' Clear height
- ESFR Sprinkler
- 4 Docks with pit levelers and 3 Drive-ins
- Outside storage capabilities (1-2 acres)
- ±4.5 Miles from I-71 and ±6.7 miles from I-75

## Interior and Exterior Building Improvements

- Fully renovated office space, restrooms and breakroom
- LED lights throughout
- Interior and exterior paint
- Polished concrete floors
- New HVAC and warehouse heaters as needed
- New dock and drive-in doors and equipment as needed
- New landscaping

*For information, please contact:*

### Si Pitstick, SIOR, CCIM

*Executive Managing Director*  
t 513-508-5014  
si.pitstick@nmrk.com

### Josh Young, SIOR

*Senior Managing Director*  
t 513-509-0404  
josh.young@nmrk.com

### Drew Wall

*Director of Leasing*  
t 513-335-1728  
drew@mw1corp.com

312 Walnut Street, Suite 1510  
Cincinnati, OH 45202



[nmrk.com](http://nmrk.com)

# NEWMARK



The information contained herein has been obtained from sources deemed reliable but has not been verified and no guarantee, warranty or representation, either express or implied, is made with respect to such information. Terms of sale or lease and availability are subject to change or withdrawal without notice.

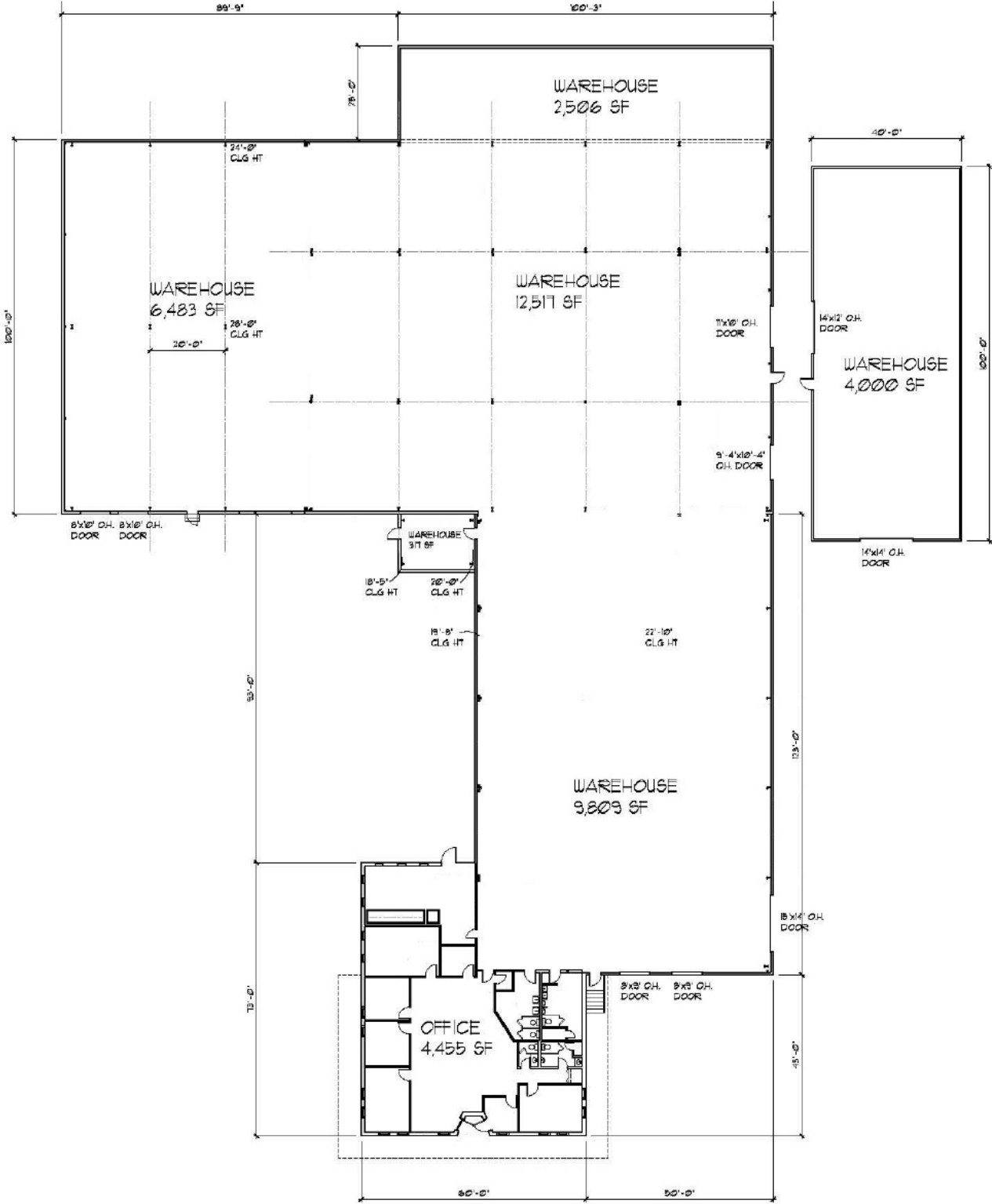
## BUILDING SPECIFICATIONS

<b>Location</b>	Lebanon, OH Warren County	<b>Drive-in</b>	3
<b>Available Space</b>	±40,087 SF	<b>Parking</b>	±30 Spaces (Expandable)
<b>Office Size</b>	±4,000 SF	<b>Restrooms</b>	2 Sets; 1 in plant and 1 in office
<b>Warehouse Size</b>	±36,087 SF	<b>Sprinkler</b>	ESFR
<b>Total Building Size</b>	±40,087 SF	<b>Air Conditioning Warehouse</b>	Yes; in office Gas-fired unit heaters
<b>Land</b>	- Main Building ±3 Acres - Additional land ±1.38 Acres	<b>Lighting</b>	LED
<b>Zoning</b>	I-1, Light Industrial	<b>Electrical Service</b>	City of Lebanon  600 amps, 480 volt, 3 phase
<b>Year Built</b>	1972	<b>Gas</b>	Duke Energy
<b>Year Renovated</b>	2025/2026	<b>Sewer</b>	City of Lebanon
<b>Construction</b>	Metal	<b>Water</b>	City of Lebanon
<b>Building Dimensions</b>	N/A	<b>Floor Drains</b>	Yes
<b>Column Spacing</b>	- Clear span portion - 22'x48' warehouse	<b>Available</b>	Immediately
<b>Floor Thickness</b>	5" reinforced concrete	<b>Lease Rate</b>	\$6.95/SF
<b>Roof Type</b>	Recoated stain metal roof	<b>Operating Expenses</b>	\$1.41/SF
<b>Clear Height</b>	19'-26'		
<b>Docks</b>	4 Docks with pit levelers		

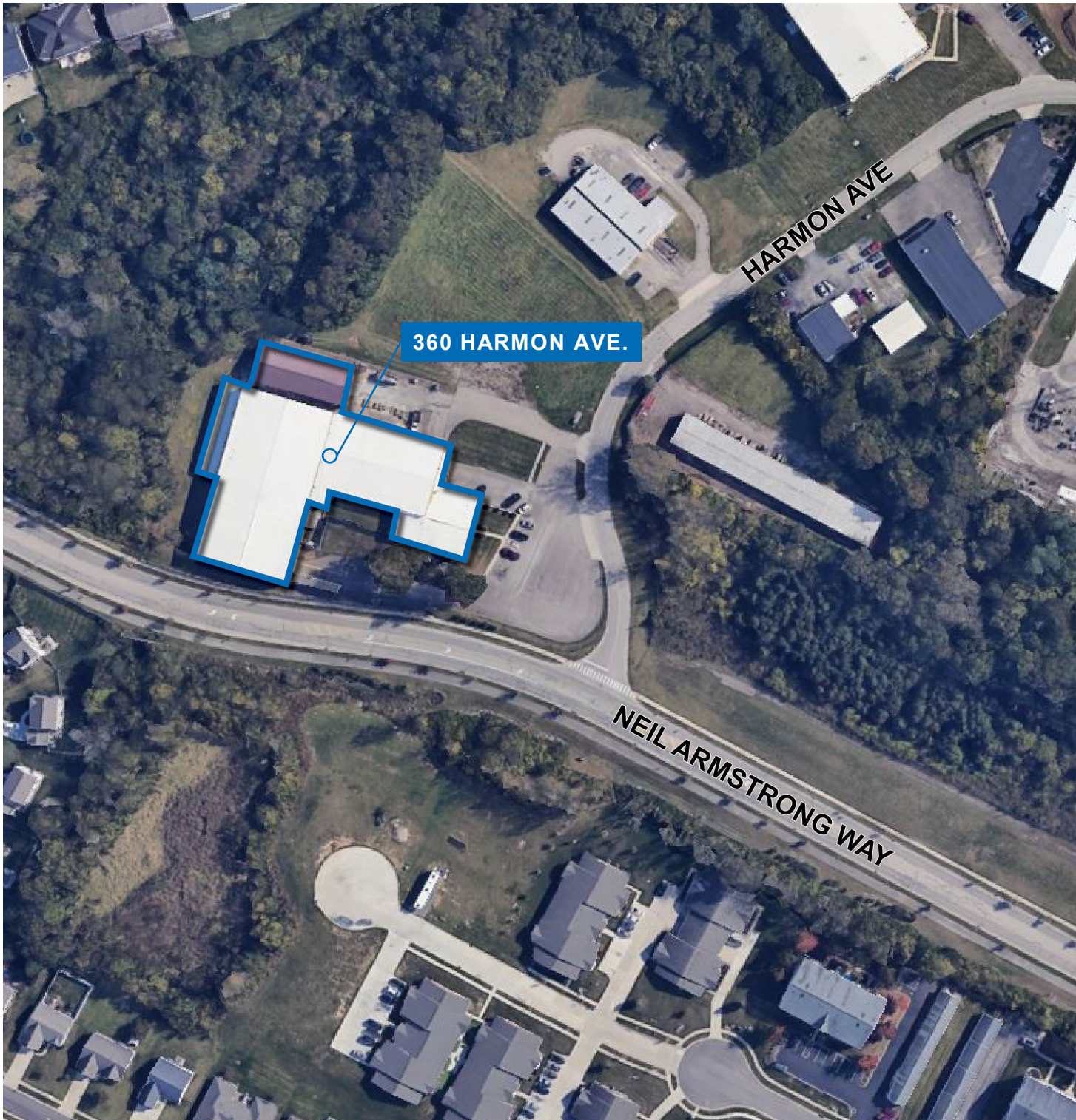
PROPERTY PHOTOS



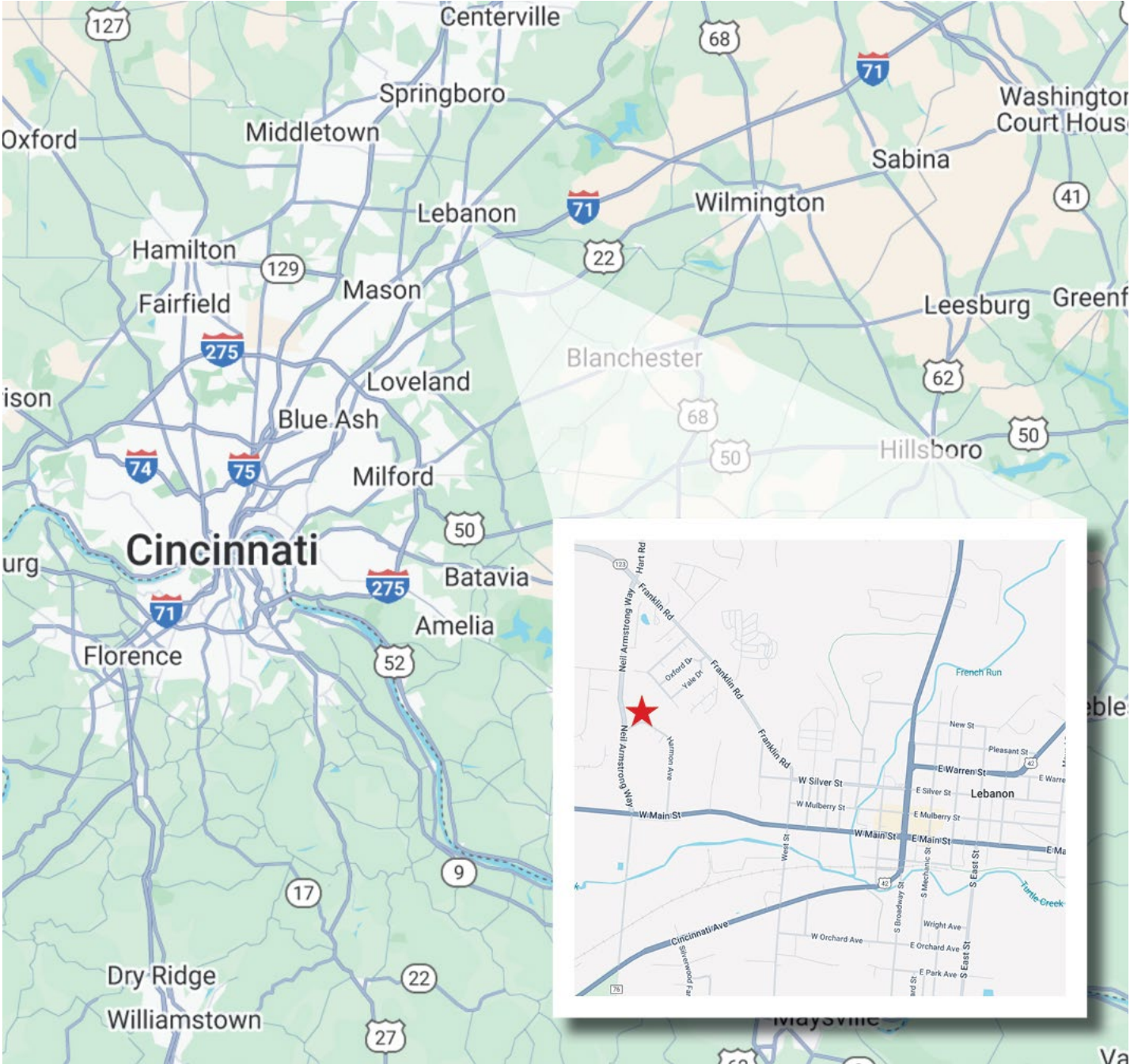
FLOOR PLAN



AERIAL MAP



LOCATOR MAP



For information, please contact:

**Si Pitstick, SIOR, CCIM**  
 Executive Managing Director  
 t 513-508-5014  
 si.pitstick@nmrk.com

**Josh Young, SIOR**  
 Senior Managing Director  
 t 513-509-0404  
 josh.young@nmrk.com

**Drew Wall**  
 Director of Leasing  
 t 513-335-1728  
 drew@mw1corp.com

312 Walnut Street, Suite 1510  
 Cincinnati, OH 45202



nmrk.com



The information contained herein has been obtained from sources deemed reliable but has not been verified and no guarantee, warranty or representation, either express or implied, is made with respect to such information. Terms of sale or lease and availability are subject to change or withdrawal without notice.