

Retail Sublease

3864 N. Mississippi Ave.
Portland, OR

Features:

- Street-facing retail space in the vibrant N Mississippi neighborhood
- Surrounded by abundant services, specialty shops, a variety of cafes, celebrated restaurants and music venues
- Over 5,800 vehicles per day on N Mississippi
- Entry adjacent to main entrance of Tupelo Alley luxury apartment community that extends 5 floors above

Space Profile:

Premises	First floor	Term	9/30/28
RSF	1,945 SF	Building Class	Class A Retail
Rental Rate	Call Broker for Details	Built	2008
Availability	Vacant		

Contact:



Sean Brennecke
503.351.7788
sbrennecke@cresa.com

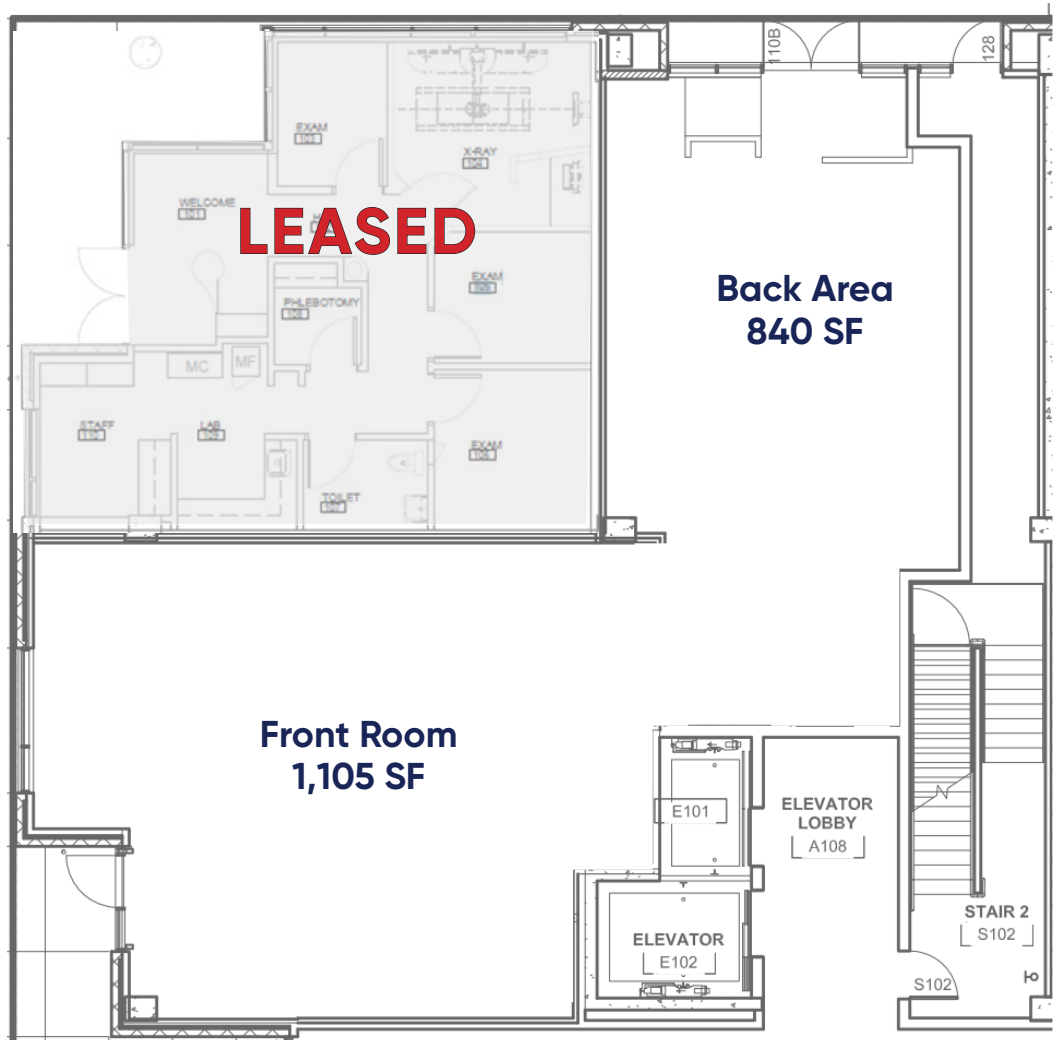


Summer Blasquez
503.334.0746
sblasquez@cresa.com

Sublease Space: 1,945 SF

N. Failing St

N. Mississippi Ave



Space Notes

- Two ADA compliant restrooms
- Ample plumbing in place
- Kitchenette / prep area
- Plug-and-play for salon use (previous tenant was a hair salon)
- Alternate entrance on N Failing Street



Back Area (Facing N. Failing St.)



Front Room (Facing N. Mississippi Ave.)

Retail Sublease

3864 N. Mississippi Ave.
Portland, OR



Main Entry on N. Mississippi Ave.



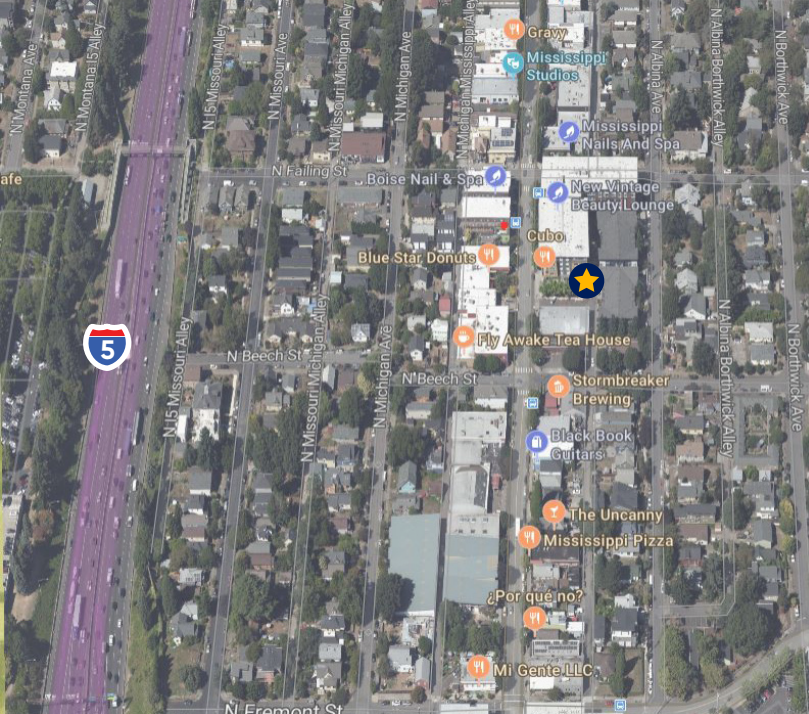
Front Room



Reception Area

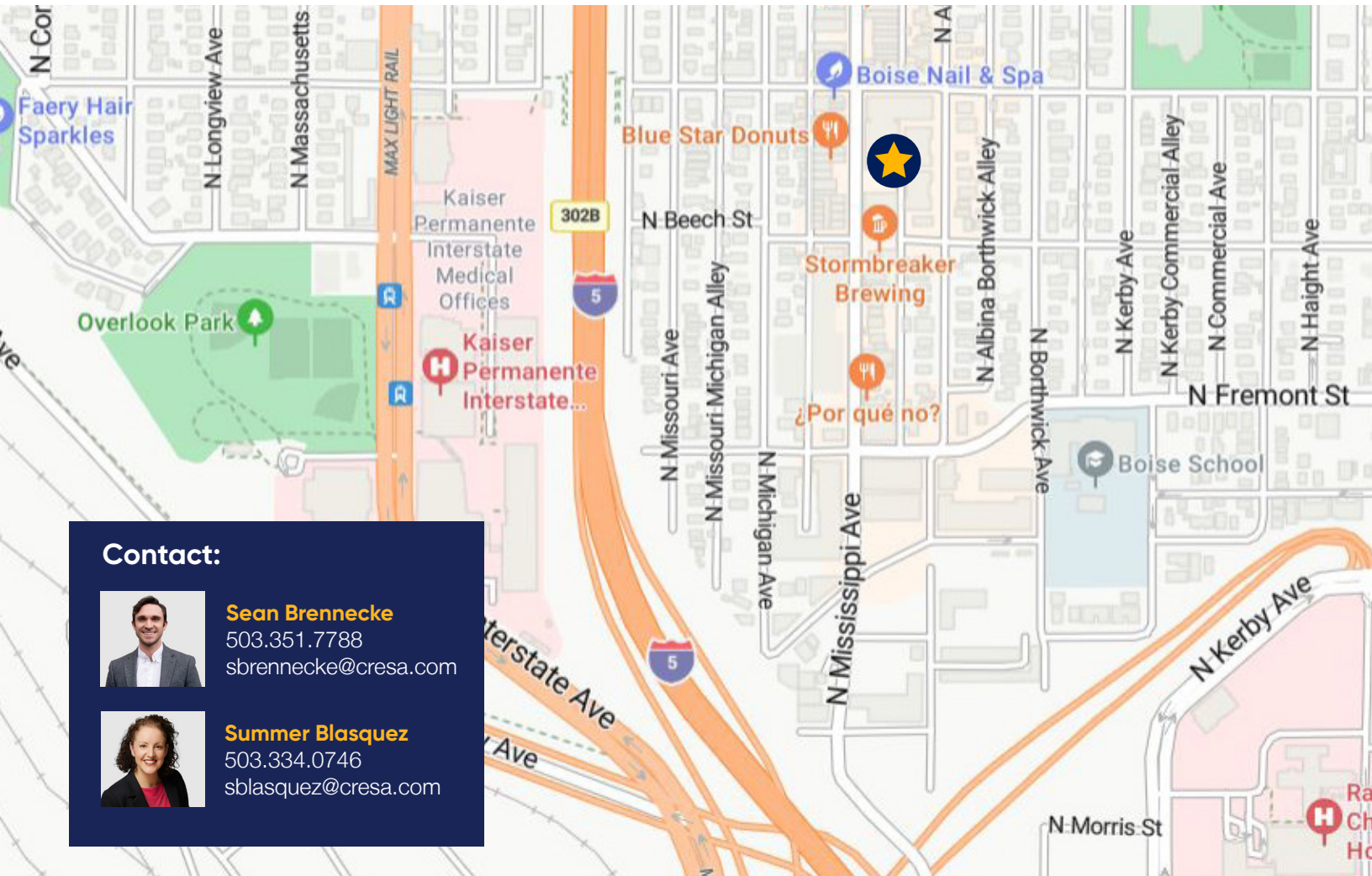


Back Area



Retail Sublease

3864 N. Mississippi Ave.
Portland, OR



Contact:



Sean Brennecke
503.351.7788
sbrennecke@cresa.com



Summer Blasquez
503.334.0746
sblasquez@cresa.com

cresa ::::

Cresa © 2024. All rights reserved. The information contained in this document has been obtained from sources believed reliable. While Cresa does not doubt its accuracy, Cresa has not verified it and makes no guarantee, warranty, or representation about it. It is your responsibility to independently confirm its accuracy and completeness. Any projections, opinions, assumptions or estimates used are for example only and do not represent the current or future performance of the property. The value of this transaction to you depends on tax and other factors which should be evaluated by your tax, financial and legal advisors. You and your advisors should conduct a careful, independent investigation of the property to determine to your satisfaction the suitability of the property for your needs.