



FOR SUBLEASE

8580 Cinder Bed Road, Suite 2300

Lorton, Virginia

6,950
square foot

Industrial & Flex Space

Remaining term
through October 31, 2028

- 6,950 square foot space
- Five (5) offices with kitchen
- 18' clear height
- 3.00/1,000 sf parking per building
- Premier business park
- Located just East of I-95 and ideally situated near Fort Belvoir

CONTACT US

Ben Luke, SIOR

Executive Vice President
+1 703 394 4810
ben.luke@colliers.com

Clay Ellis

Associate Vice President
+1 703 394 4833
clay.ellis@colliers.com

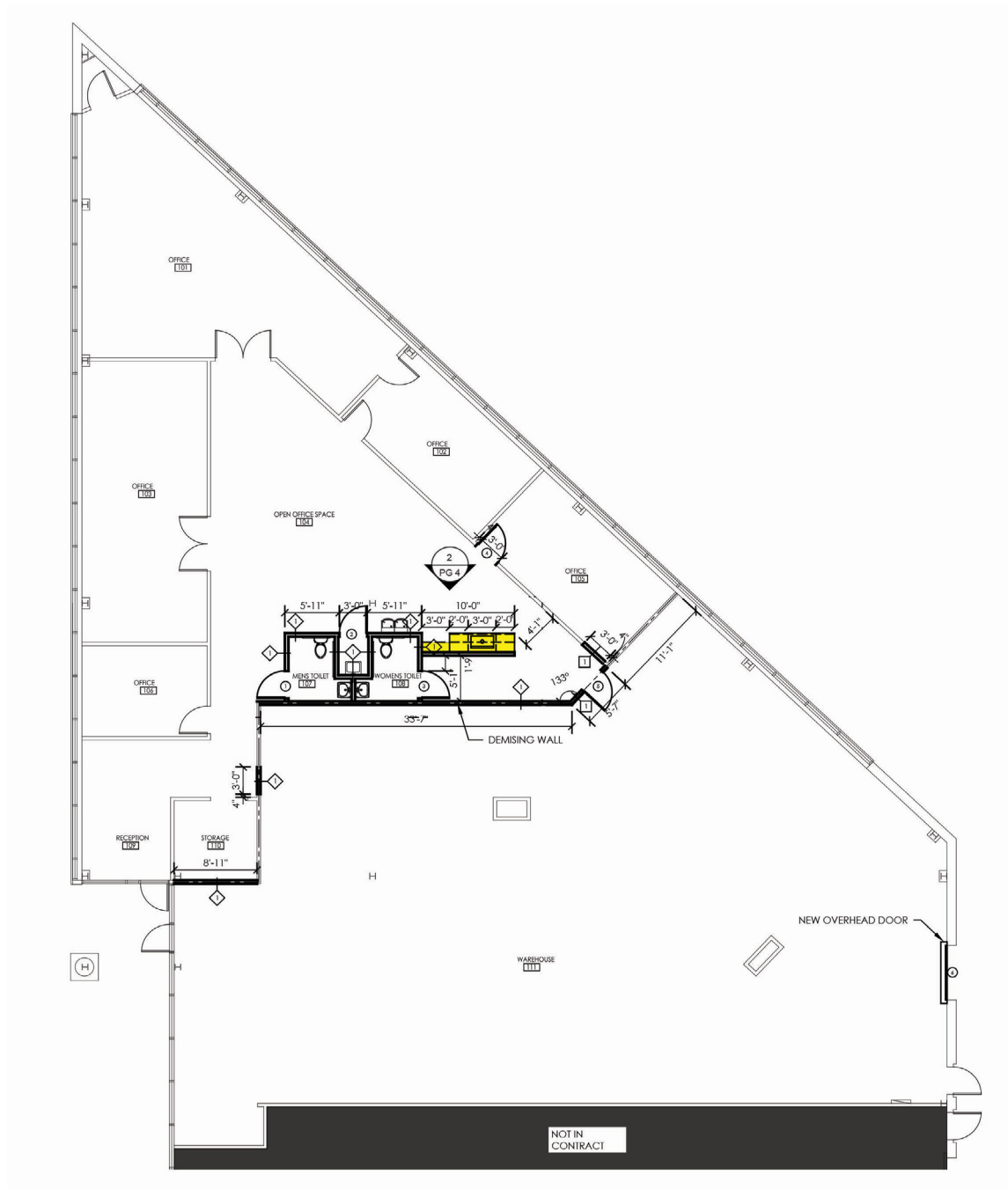
Jay Budin

Associate
+1 202 534 3613
jay.budin@colliers.com

Colliers International

1753 Pinnacle Drive 12th Floor
Tysons Corner, VA 22102
+1 703 394 4800
colliers.com

Floor Plan



Photos



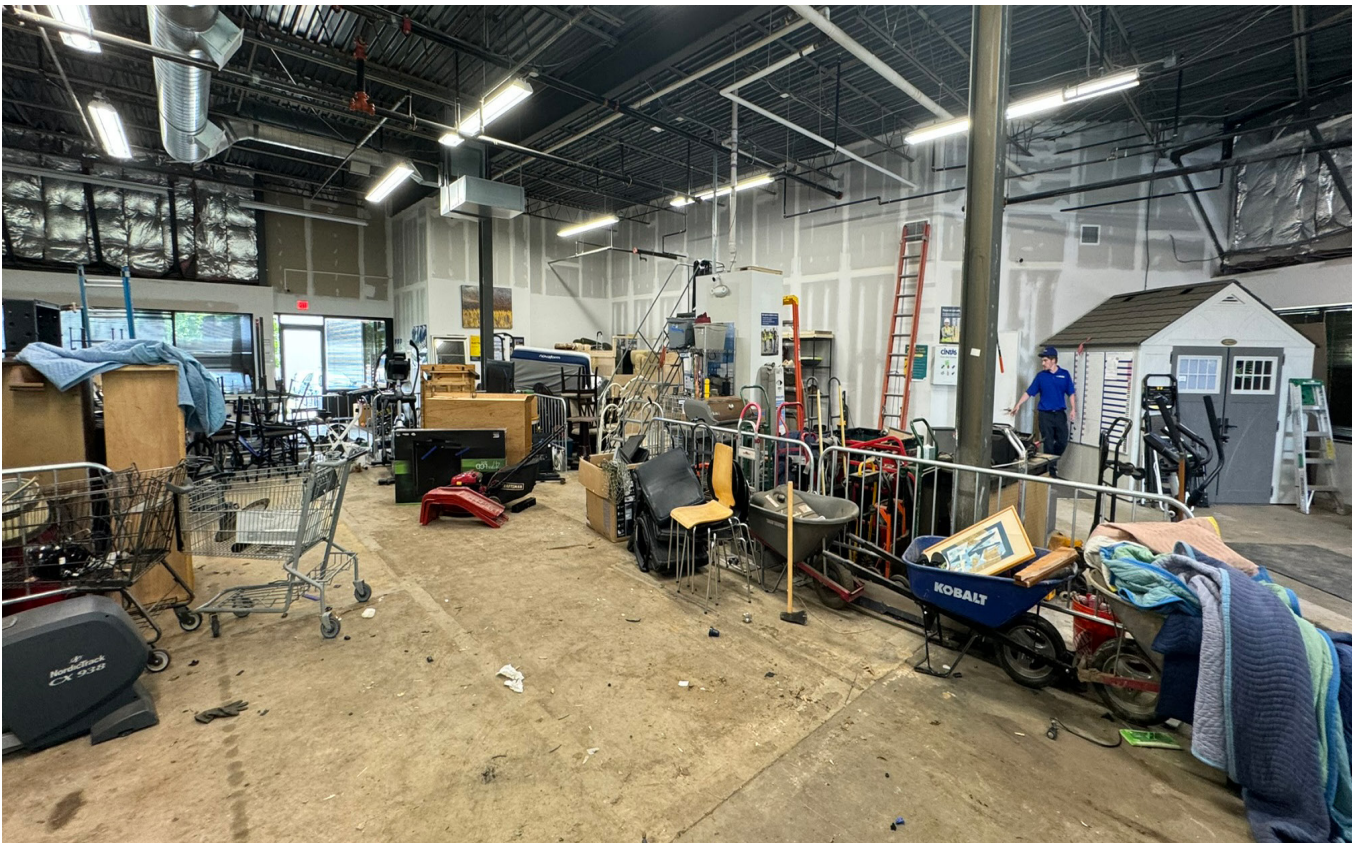
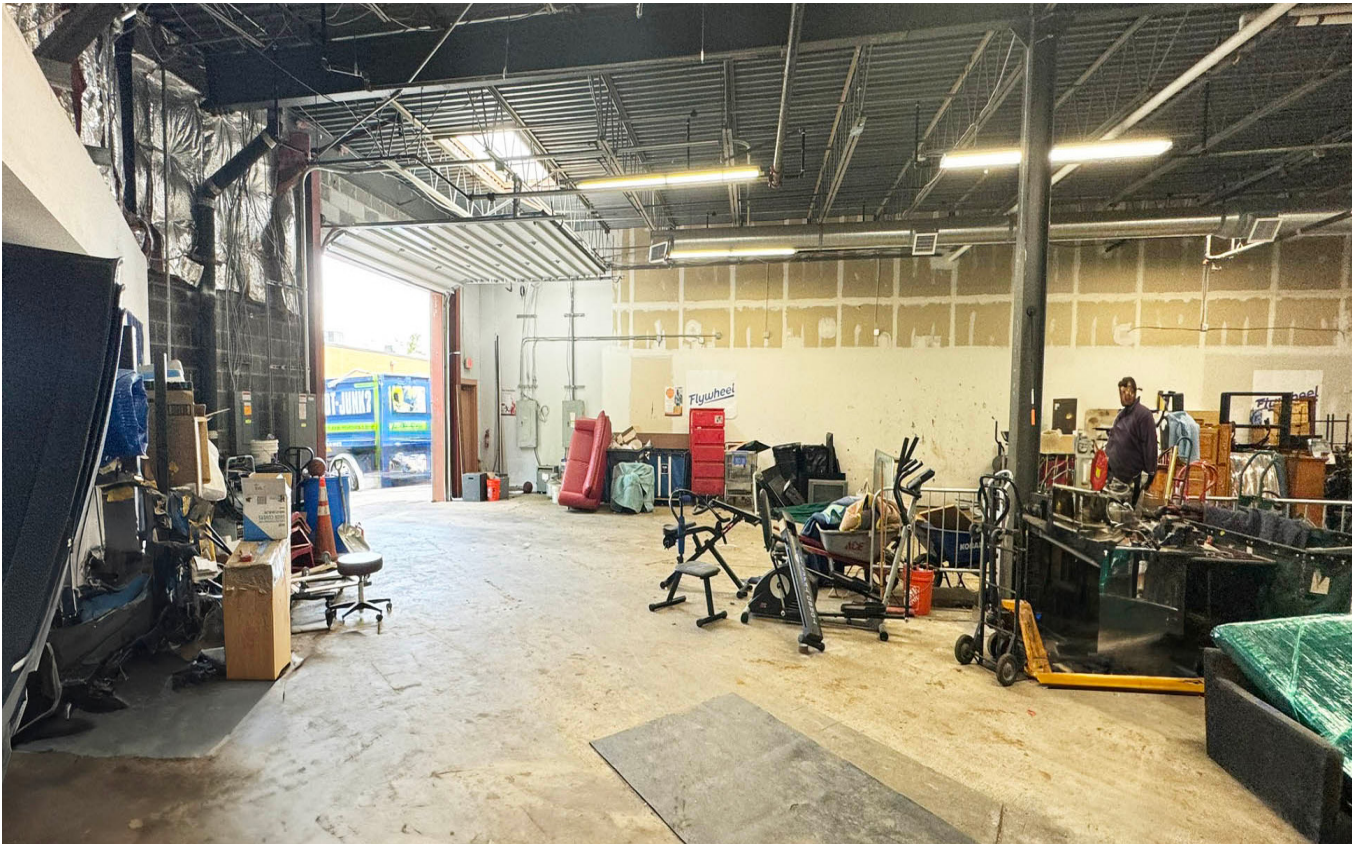
Photos



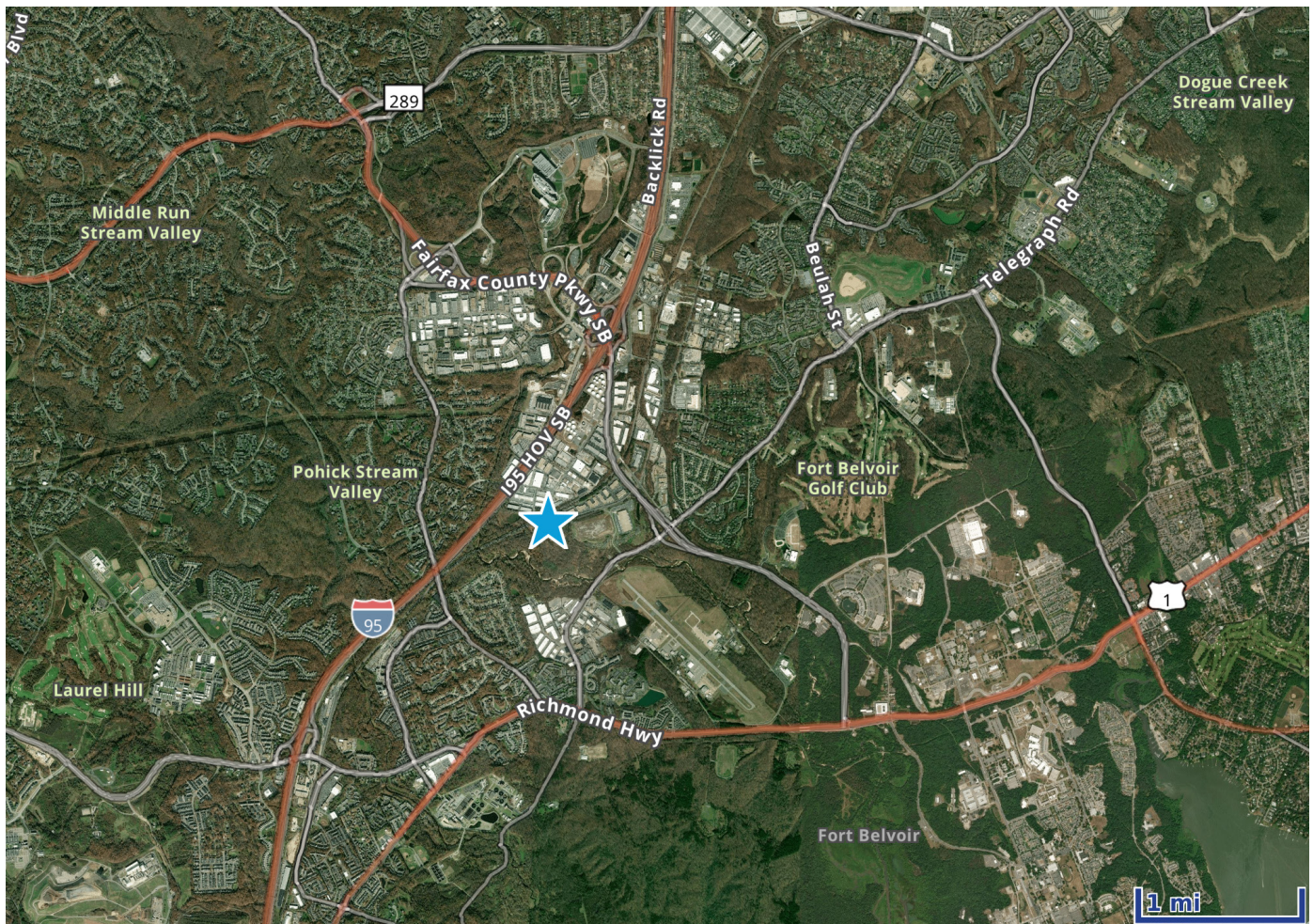
Photos



Photos



Location Map



Ben Luke, SIOR

Executive Vice President
+1 703 394 4810
ben.luke@colliers.com

Clay Ellis

Associate Vice President
+1 703 394 4833
clay.ellis@colliers.com

Jay Budin

Associate
+1 202 534 3613
jay.budin@colliers.com

Colliers International

1753 Pinnacle Drive 12th Floor
Tysons Corner, VA 22102
+1 703 394 4800
colliers.com