

RECENTLY RENOVATED CREATIVE PROPERTY

בסייד

IN WEST LOS ANGELES

2228 BARRY AVENUE, LOS ANGELES, CA 90064

Jeffrey E. Resnick

310.922.1717

jresnick@cagre.com

Lic. 00405333

Adam Funk

310.666.0124

afunk@cagre.com Lic.

02129715



SPACE INFORMATION

- Recently renovated
- Creative property with 22' exposed ceilings
- Cyc wall
- Contemporary improvements and excellent access to 405 and 10 Freeways off Olympic Corridor
- Walking distance to Metrolink, Sawtelle, & abundance of retail amenities
- Incredible space for all creative users (i.e. production, photography studio, entertainment, event space, etc.)

These materials are based on information and content provided by others, which we believe are accurate. No guarantee, warranty or representation is made by Commercial Asset Group, Inc. or its personnel. All interested parties must independently verify accuracy and completeness. As well, any projections, assumptions, opinion, or estimates are used for example only and do not represent the current or future performance of the identified property. Your tax, financial, legal and toxic substance advisors should conduct a careful investigation of the property and its suitability for your needs, including land use limitations. The property is subject to prior lease, sale, change in price, or withdrawal from the market without notice.

RENTAL RATE

\$22,000/MO, MG

SPACE SIZE

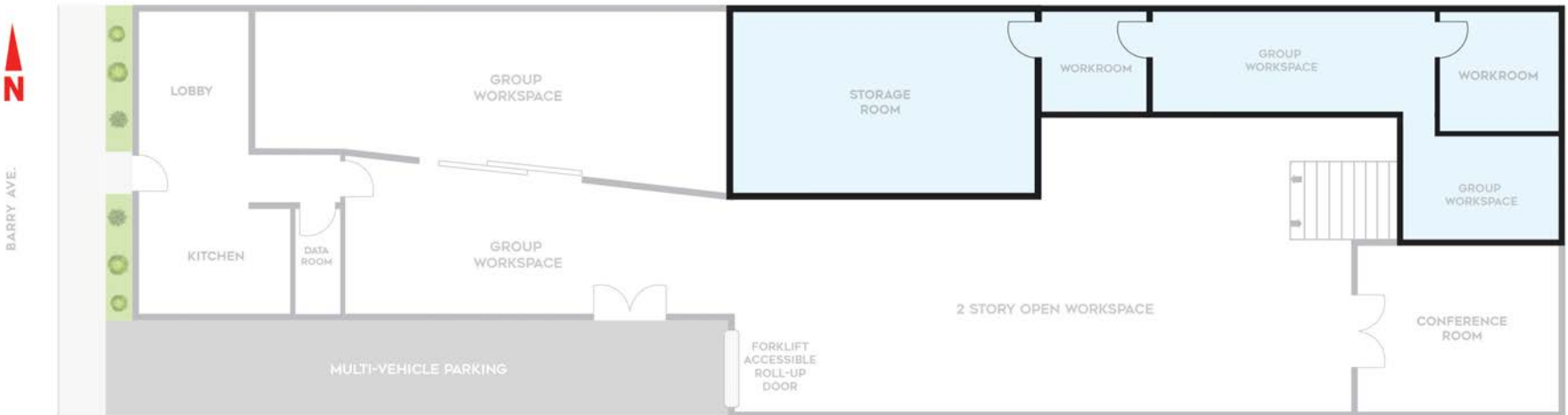
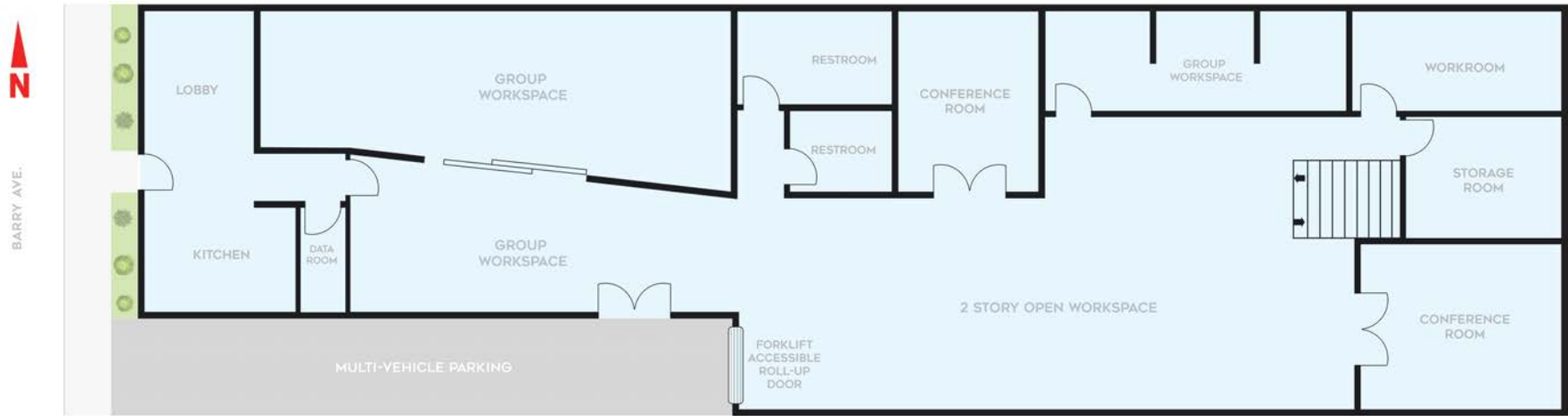
±11,900 SF

PARKING

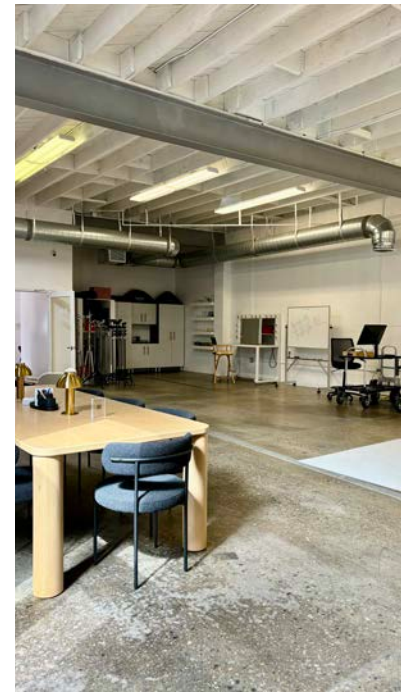
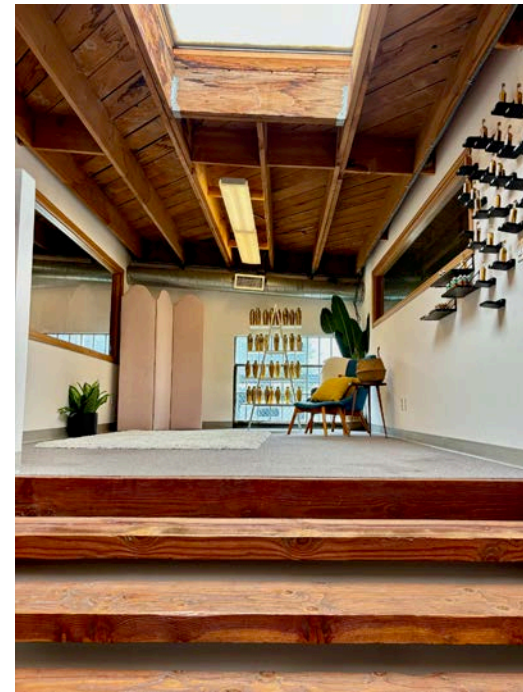
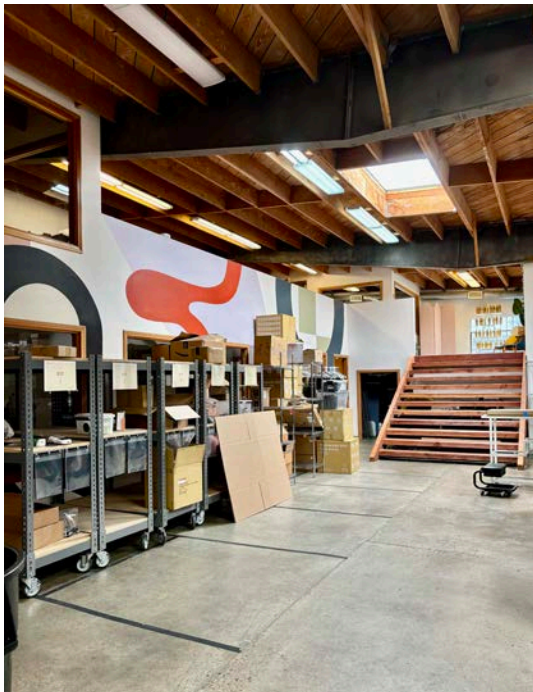
4 SPACES INCLUDED

2228 BARRY AVENUE, LOS ANGELES, CA 90064

FLOOR PLAN



INTERIOR PHOTOS



AERIAL



DAISO
JAPAN



2228 BARRY AVENUE, LOS ANGELES, CA 90064



Jeffrey E. Resnick

310.922.1717

jresnick@cagre.com

Lic. 00405333

Adam Funk

310.666.0124

afunk@cagre.com Lic.

02129715

Commercial Asset Group

1801 Century Park East, Ste 1550

Los Angeles, CA 90067

P 310.275.8222 F 310.275.8223

www.cagre.com Lic. 01876070



**COMMERCIAL
ASSET GROUP**