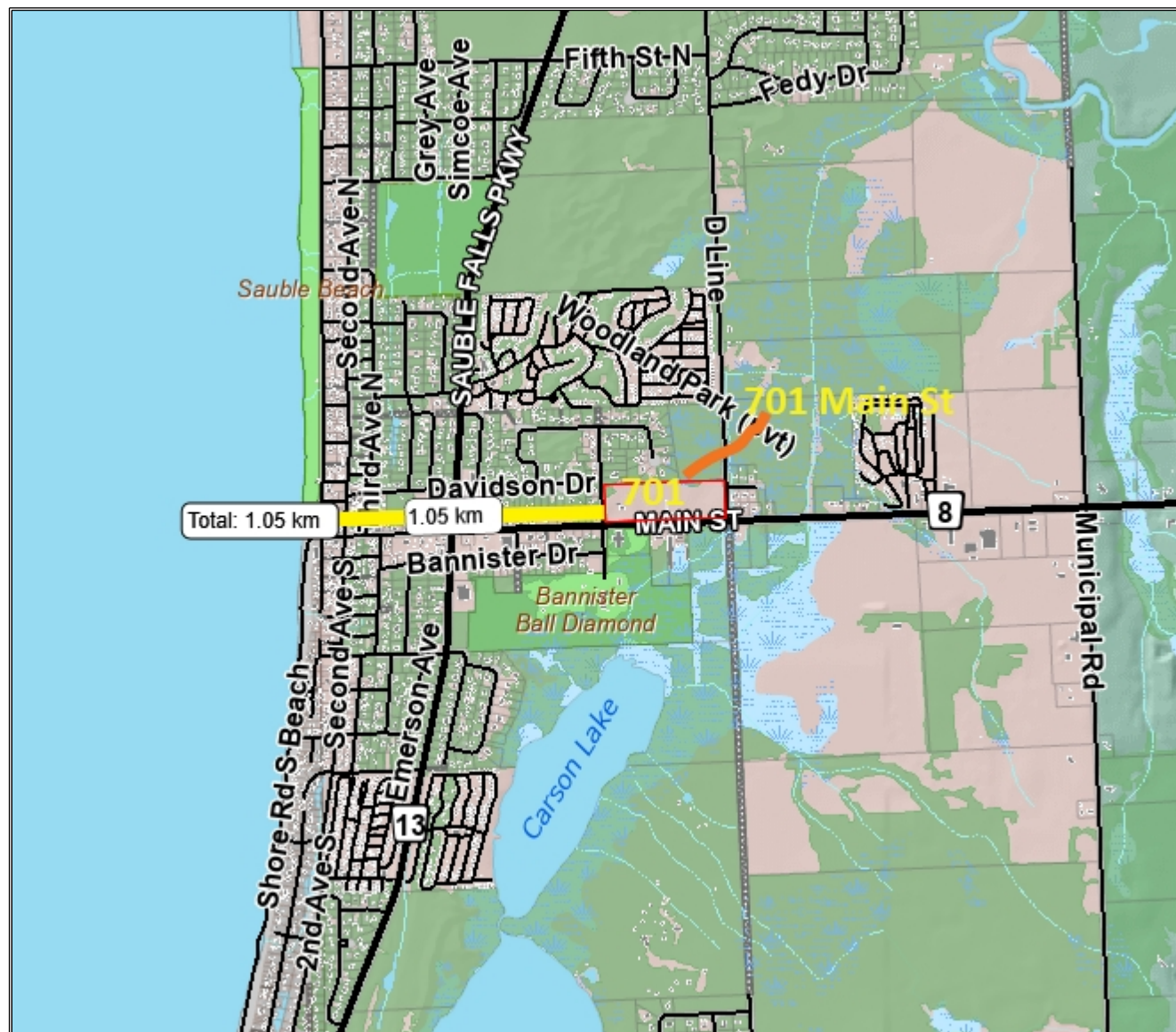


Property Parcel Report

701 MAIN ST, South Bruce Peninsula

Property Info	
Roll Number	410254001105400
Civic Address	701 MAIN ST
Municipality	South Bruce Peninsula Former Former municipality Township
Legal Text	CON D PT LOT 26 PLAN 429; LOTS 46 TO 52
Structures	None here (or information not available)
Frontage	395.96 m (1299.1 ft)
Depth	Not available
Area	5.37 ha (13.3 acres)
Assessment	Assessed Value: \$869,000 Property Tax:* \$19,048.06 <i>* For information purposes only. Please confirm with the Municipal Tax Collector.</i>



Map Scale 1: 23,414

5-May-2024

Assessment Detail Current to:

© 2024 County of Bruce

THIS IS NOT A LEGAL SURVEY DOCUMENT Disclaimer at maps.brucecounty.on.ca/disclaimer.aspx

Assessment information provided by the Municipal Property Assessment Corporation (MPAC)