

DINGMAN TOWNE CENTRE AVAILABLE FOR LEASE, SALE OR JOINT VENTURE

Route 739 & Log Tavern Rd | Dingman Twp, PA 18328 | Pike County

PROPERTY HIGHLIGHTS

- New mixed-use development on 280 acres featuring medical, retail and residential uses
- Located across from Wells Fargo at new proposed traffic signal and next to Dingman Elementary and Primary Schools
- Located in Pike County, the second fastest growing county in PA
- Five miles from historic Milford
- Opportunities available include: residential housing, assisted senior living, senior townhomes and multifamily units
- Ideal for medical offices, convenience, fast food and many other retail/office uses



SEEKING RESIDENTIAL DEVELOPER

Join



EXCLUSIVE
AGENT:



JAMES DePETRIS
610.941.4034 x108
610.304.4478 cell
jdepetris@lpre.com

Information contained herein has been obtained from owner of the property or from sources deemed reliable. We have no reason to doubt it's accuracy but make no warranty or representation. All information is submitted subject to errors, omissions, changes, withdrawal without notice and any special listing conditions of the owner.

Demographics

	Trade Area
Population	33,794
Average HH Income	\$89,667
Households	752
Number of Employees	5,534

Traffic Counts

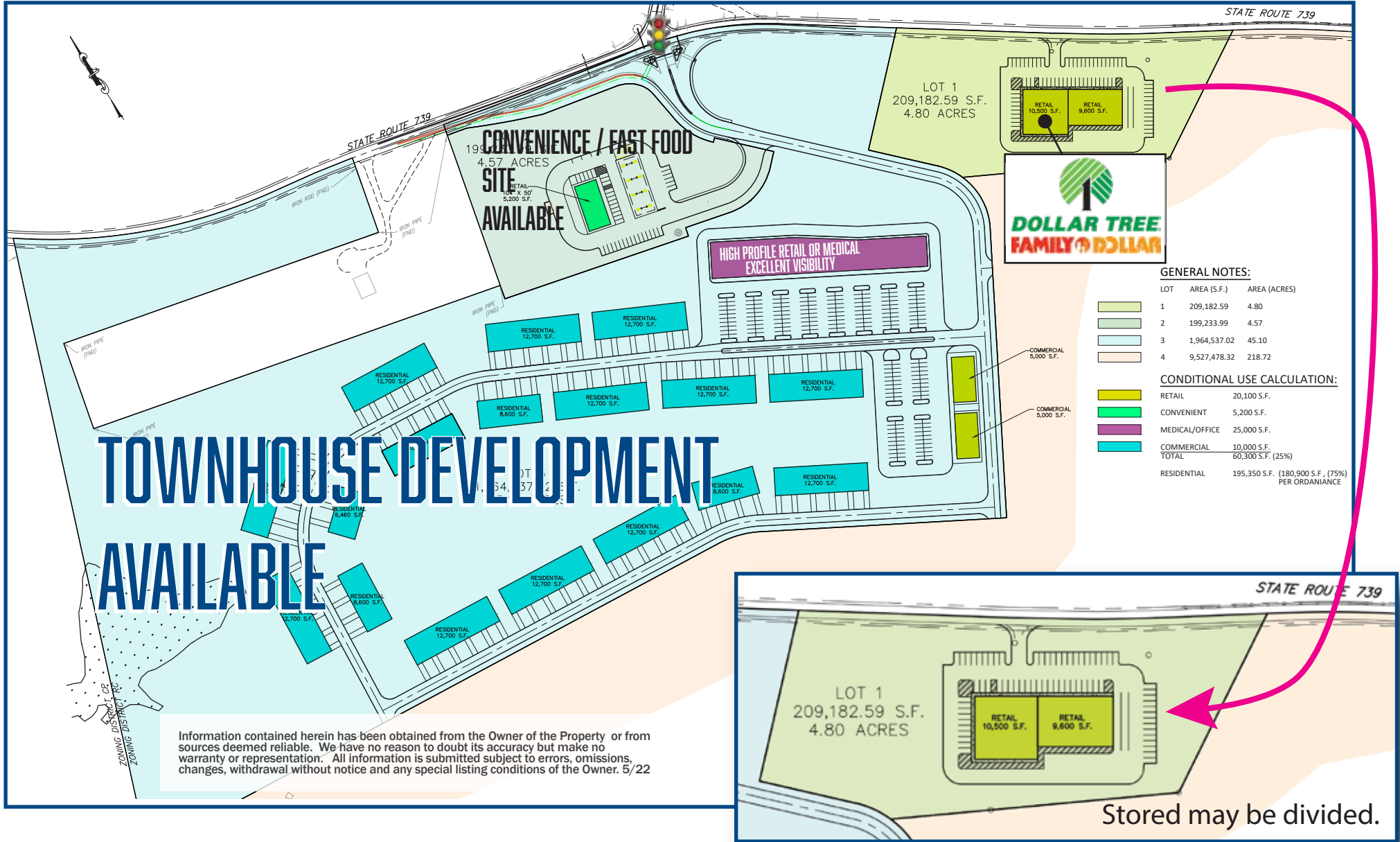
*Data Source: Sites USA - REGIS™ 2022

610-941-4034
LPRE.COM
1000 FAYETTE STREET
CONSHOHOCKEN, PENNSYLVANIA 19428



DINGMAN TOWNE CENTRE AVAILABLE FOR LEASE, SALE OR JOINT VENTURE

SITE PLAN



EXCLUSIVE AGENT:

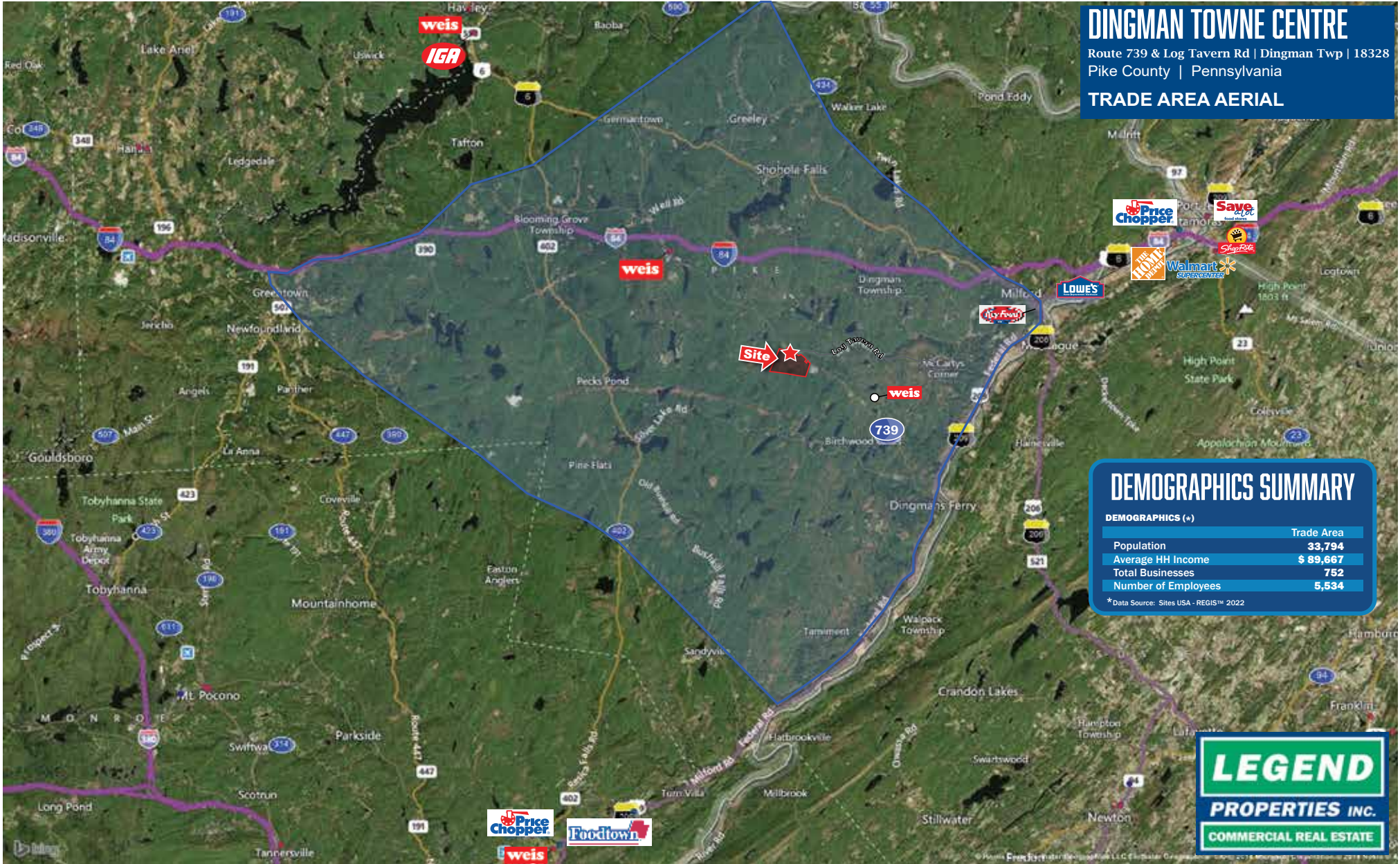


JAMES DePETRIS
 610.941.4034 x108
 610.304.4478 cell
 jdepetris@lpre.com

DINGMAN TOWNE CENTRE

Routes 739 & Log Tavern Rd | Dingman Twp, PA 18328

DINGMAN TOWNE CENTRE AVAILABLE FOR LEASE, SALE OR JOINT VENTURE TRADE AREA AERIAL



DINGMAN TOWNE CENTRE
 Route 739 & Log Tavern Rd | Dingman Twp | 18328
 Pike County | Pennsylvania
TRADE AREA AERIAL

DEMOGRAPHICS SUMMARY

DEMOGRAPHICS (+)

	Trade Area
Population	33,794
Average HH Income	\$ 89,667
Total Businesses	752
Number of Employees	5,534

*Data Source: Sites USA - REGIS™ 2022



EXCLUSIVE AGENT:

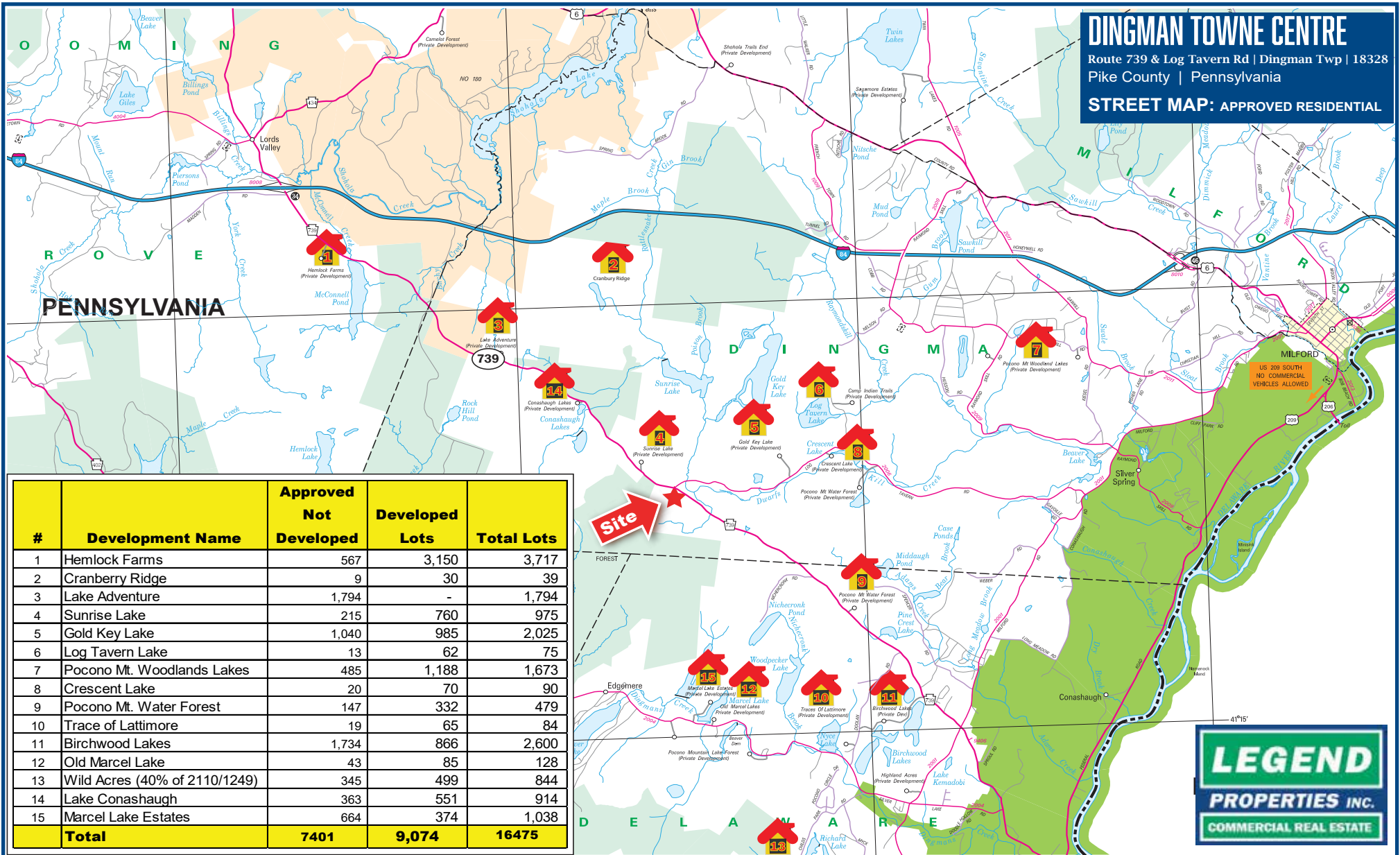


JAMES DePETRIS
 610.941.4034 x108
 610.304.4478 cell
 jdepetris@lpre.com

DINGMAN TOWNE CENTRE
 Routes 739 & Log Tavern Rd | Dingman Twp, PA 18328

DINGMAN TOWNE CENTRE AVAILABLE FOR LEASE, SALE OR JOINT VENTURE

APPROVED HOUSING



EXCLUSIVE AGENT:



JAMES DePETRIS
 610.941.4034 x108
 610.304.4478 cell
 jdepetris@lpre.com

DINGMAN TOWNE CENTRE

Routes 739 & Log Tavern Rd | Dingman Twp, PA 18328