

FOR SUBLEASE

# PLAZA CENTER

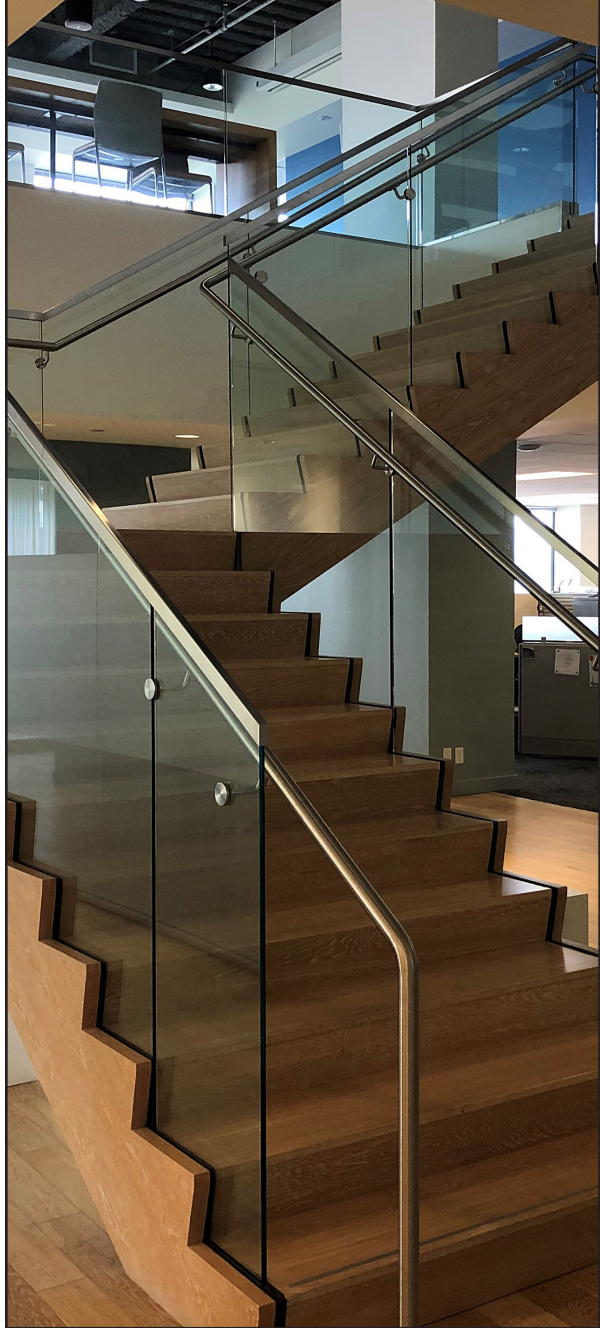
10900 NE 8th Street, Bellevue, WA 98004





## PROPERTY FEATURES

- 61,841 SF
  - Full 8th Floor: 22,606 SF
  - Full 9th Floor: 22,607 SF
  - Partial 10th Floor: 16,628 SF
- Will lease floors individually or together providing flexibility from 16,628 SF up to 61,841 SF
- Available Immediately
- Master Lease expires September 30, 2028. Will consider shorter terms.
- Aggressive well below market asking rate
- Plug & Play new build out with high end finishes
- Interconnecting stairwell between floors 8 & 9
- New building common area improvements recently completed which include fitness center, conference facility with reservable tenant lounge, secured bike storage and café

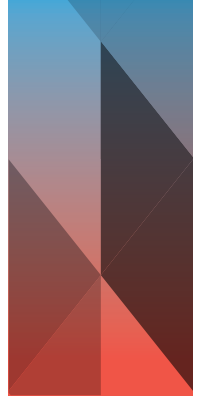


FLOORS 8 & 9

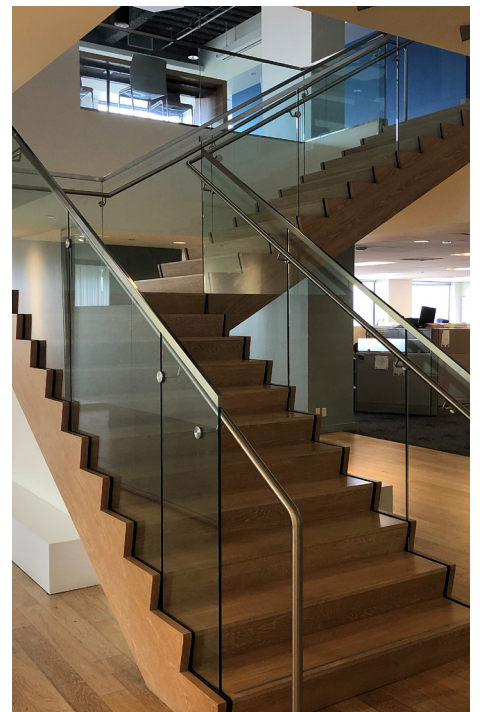
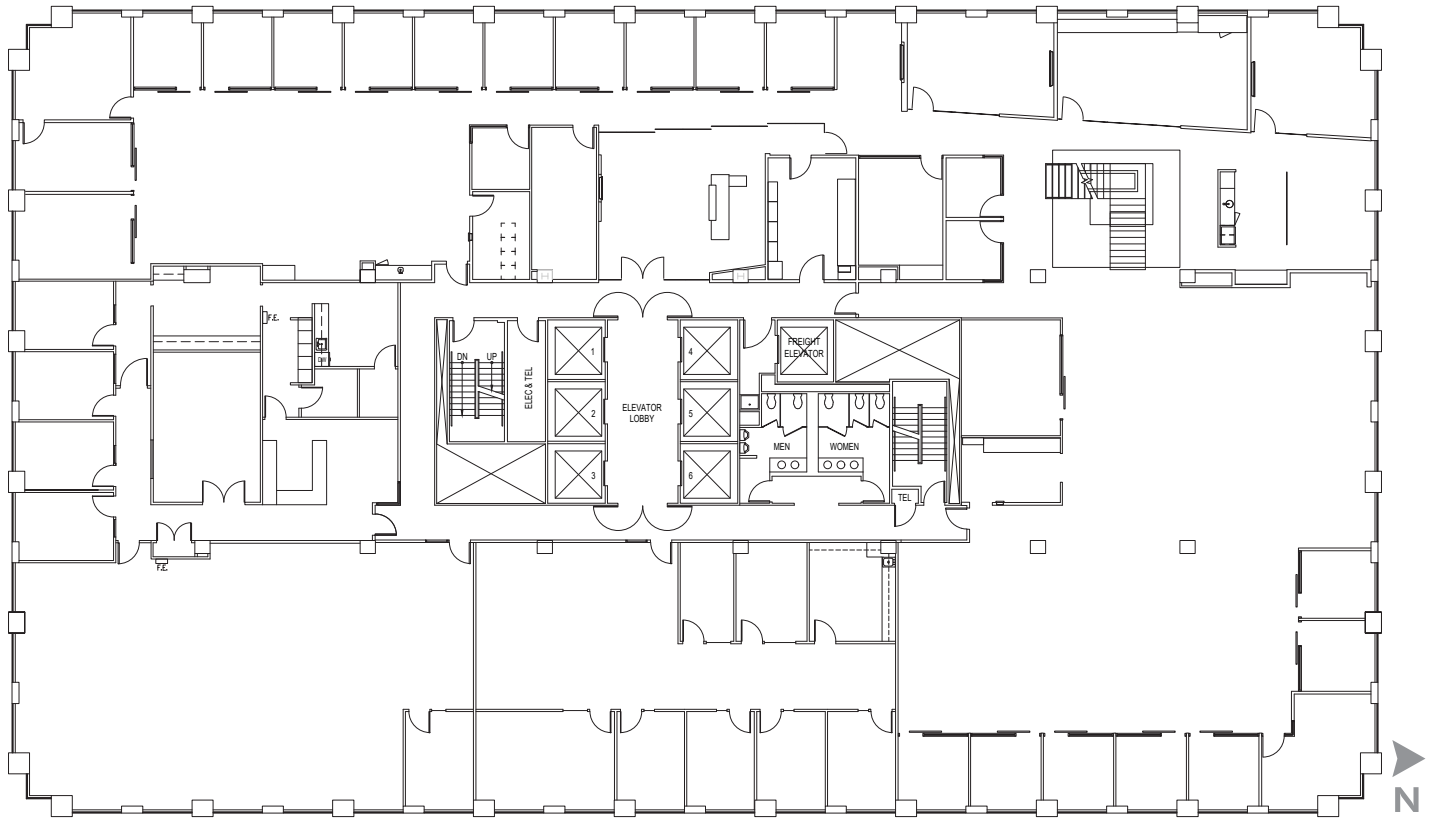


FLOOR PLAN: 8TH FLOOR

[VIRTUAL TOUR LINK](#)

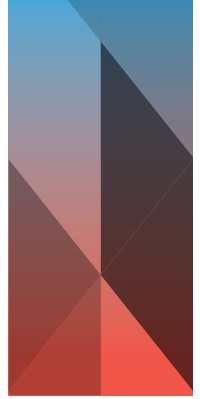


***FULL FLOOR: 22,606 SF***

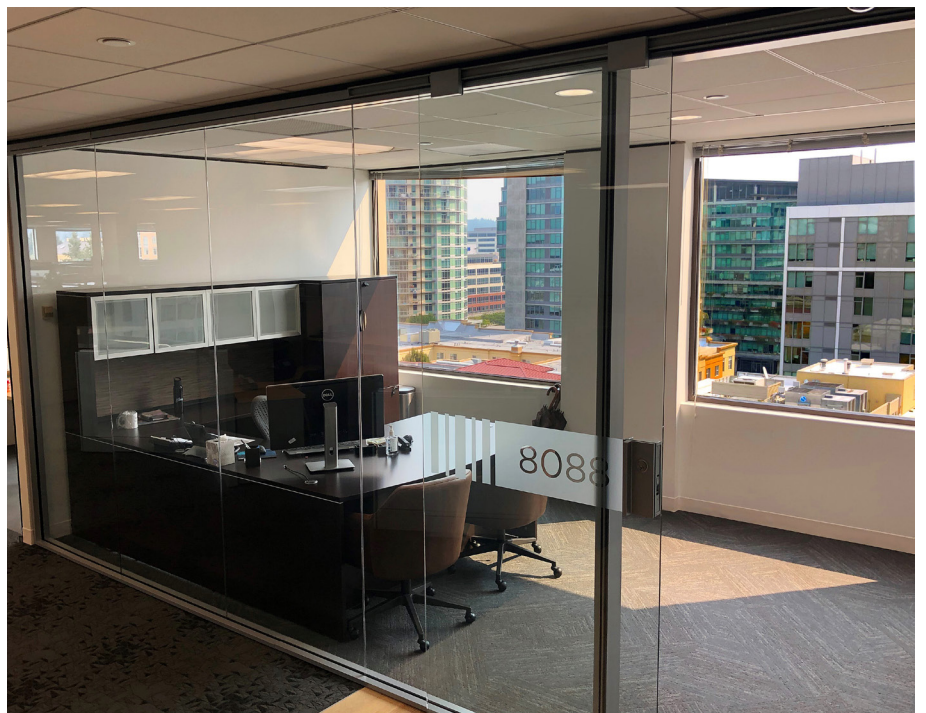
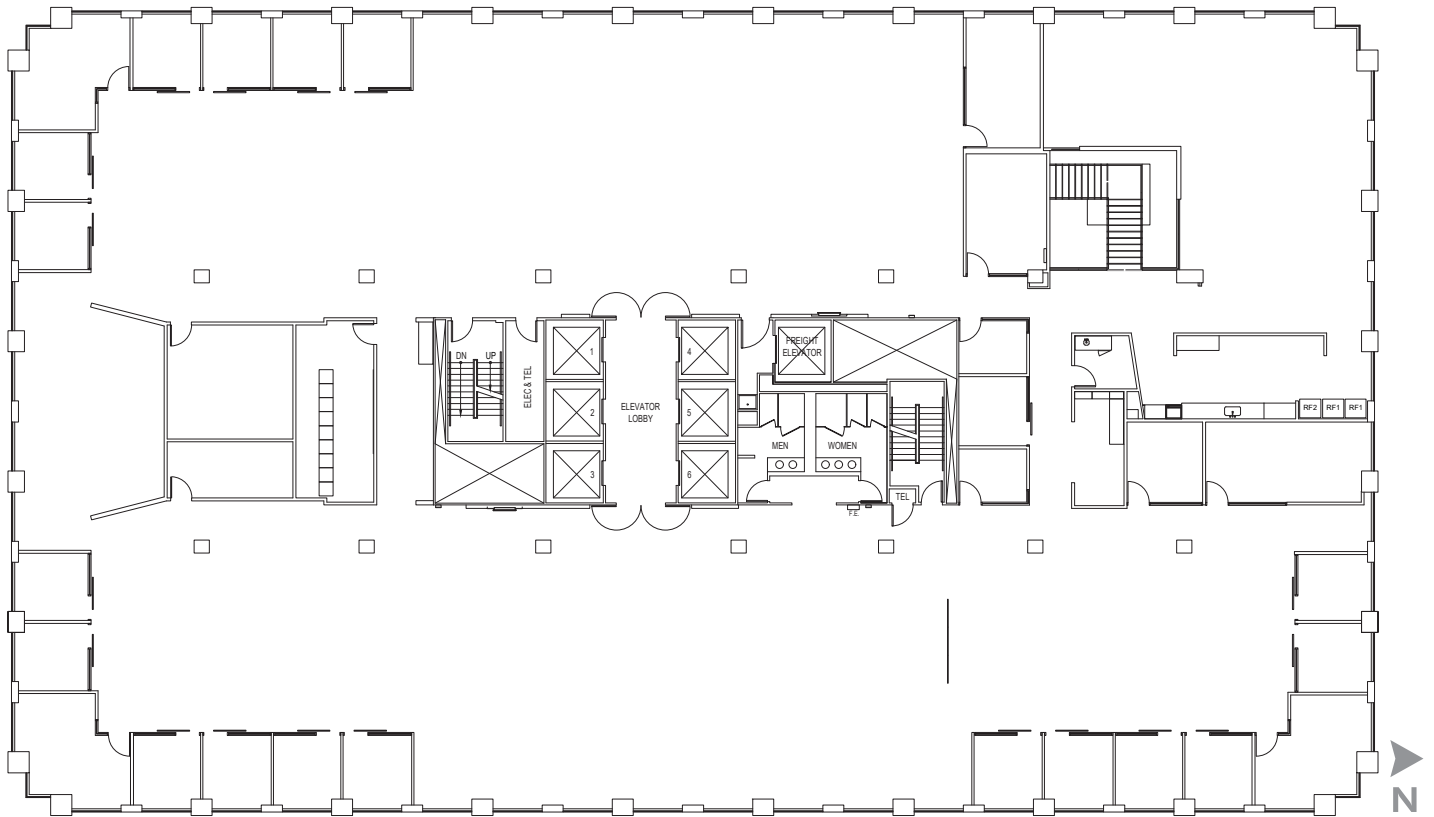


FLOOR PLAN: 9TH FLOOR

[VIRTUAL TOUR LINK](#)

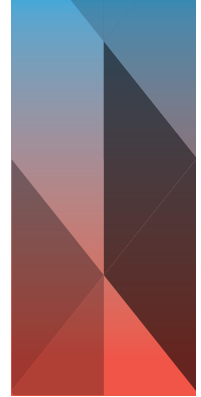


***FULL FLOOR: 22,607 SF***

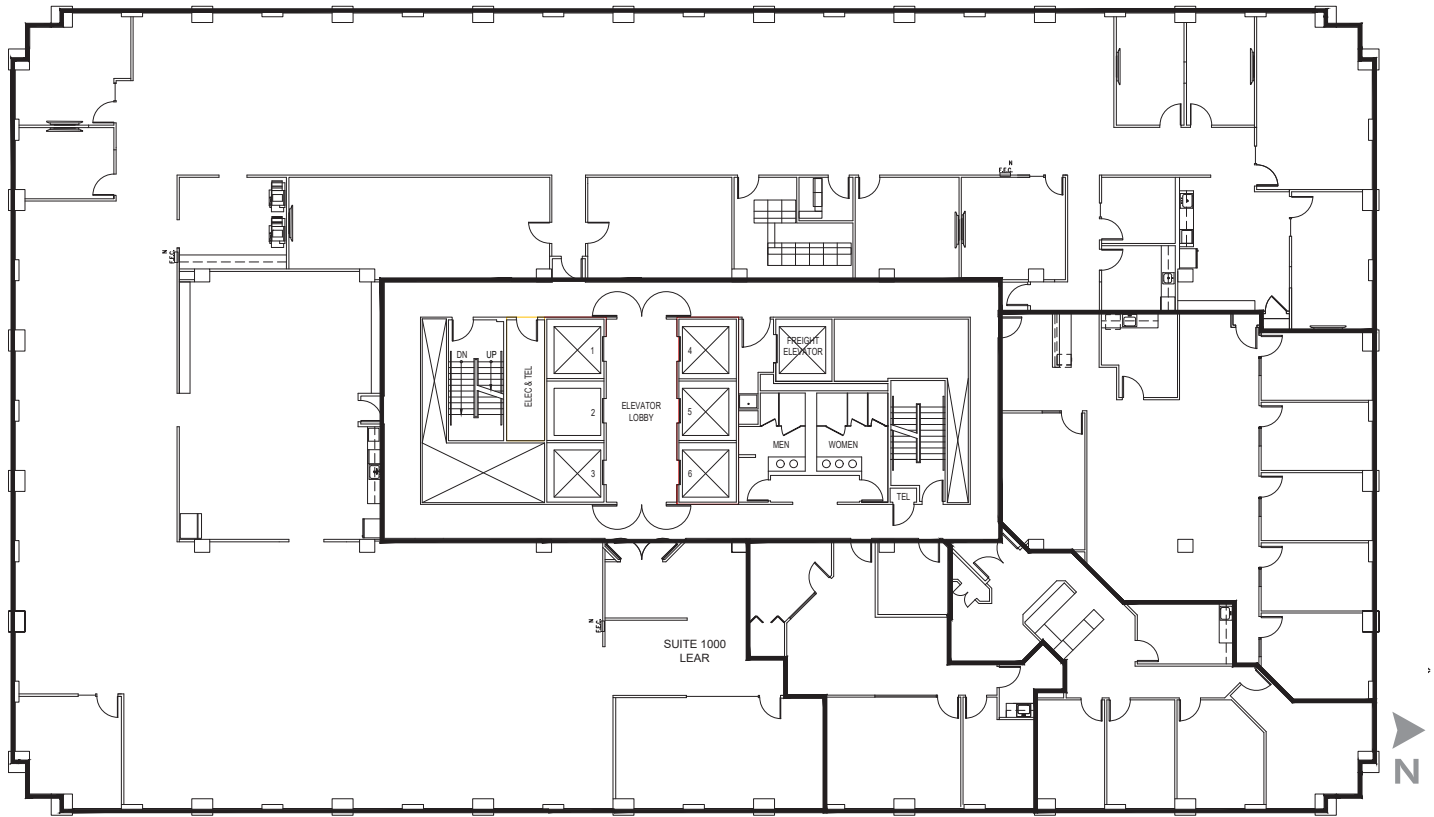


FLOOR PLAN: 10TH FLOOR

[VIRTUAL TOUR LINK](#)



# *SUITE 1000: 16,628 SF*



# *PLAZA CENTER*

---

## PLEASE CONTACT:

### **Brian Biege**

Senior Vice President  
+1 425 462 6914  
brian.biege@cbre.com

### **Jacob Hamlin**

Senior Associate  
+1 425 462 6930  
jacob.hamlin@cbre.com

### **Scott Barber**

First Vice President  
+1 425 462 6934  
scott.barber@cbre.com

### **CBRE, Inc.**

929 108th Avenue NE  
Suite 700  
Bellevue, WA. 98004

© 2024 CBRE, Inc. All rights reserved. This information has been obtained from sources believed reliable, but has not been verified for accuracy or completeness. You should conduct a careful, independent investigation of the property and verify all information. Any reliance on this information is solely at your own risk. CBRE and the CBRE logo are service marks of CBRE, Inc. All other marks displayed on this document are the property of their respective owners, and the use of such logos does not imply any affiliation with or endorsement of CBRE. Photos herein are the property of their respective owners. Use of these images without the express written consent of the owner is prohibited. SE 4.3.2024

10900 NE 8th Street, Suite 1000, Bellevue, WA 98004