

CITY OF  
*Hemet*





## LOCATION

Hemet is located in the beautiful San-Jacinto Valley in Riverside County, 15 miles south of I-10, or 8 miles east of I-215 on CA Highway 74. Hemet's strategic location 80 miles east of Los Angeles, 70 miles north of San Diego, 40 miles west of Palm Springs and 40 miles from the Ontario National Airport (ONT) making it the ideal location for retail, professional service and industry. Hemet is surrounded by the beautiful Santa Rosa Hills and San Jacinto mountains and is the valley gateway to the picturesque mountain community of Idyllwild.

Hemet enjoys over 320 days of sunshine per year and is centrally located in inland southern California with easy access to the coastal areas and beaches, mountains, desert activities, and all the tourism, theme parks and entertainment venues southern California is known for! From Hemet you can surf, ski, snowboard, mountain bike, golf or play tennis all in the same day.

Hemet's emphasis on Health, Heritage and Harmony of its beautiful location is enhanced by the wonderful amenities and high-quality life of its residents, businesses and visitors.



# POPULATION

Hemet's growing population base attracts residents and families of all ages drawn to a welcoming and engaged community, affordable housing choices, clean air, and an array of outdoor recreational opportunities. The City of Hemet's population is forecast to increase 49.63 percent through 2040, and 9.4 percent more than Riverside County communities.

There are currently 35,986 housing units in the City. The City of Hemet is currently experiencing a housing boom, with over 4,600 new construction of multi-family and single-family residential units currently approved and entitled for development.

## Demographics and Fast Facts:

- Area 29.4 square miles
- City Population: 90,436
- Population density per square mile 3,076
- Median age (years) 38.6
- Total Housing Units: 35,986
- Median Home Price: \$367,500
- Recent Market Homes Sales: \$480,000 -\$520,000
- Home Ownership Rate: 61.1 percent
- High School Graduation or Higher: 80.13 percent



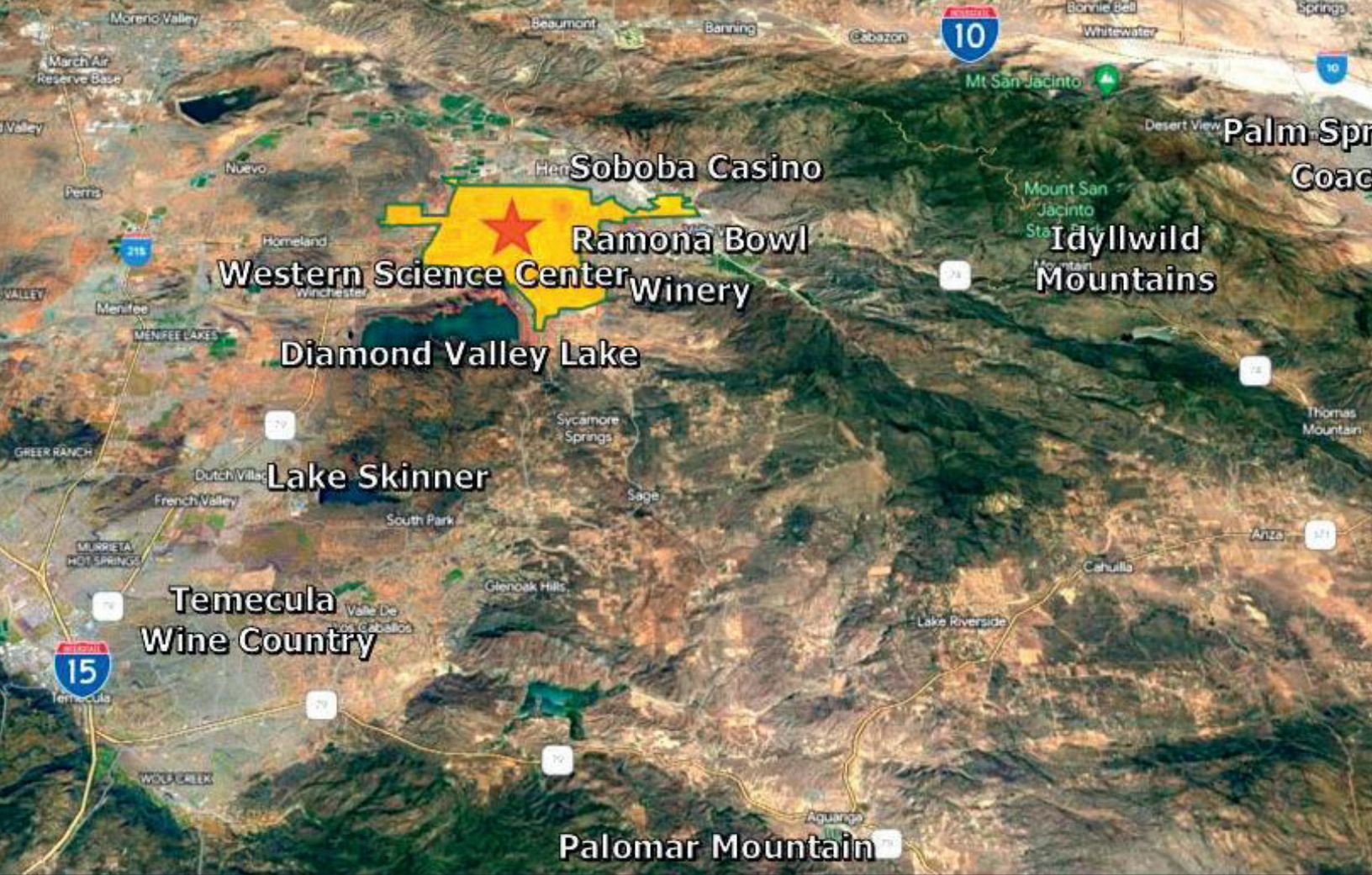
## COOPERATION

The Hemet City Council, Planning Commission and City staff are business oriented, development friendly, cooperative, proactive and easy to work with to achieve your goals. Whether it's retail, office, medical-dental or light industrial, Hemet is Open for Business and is an ideal location for success in inland Southern California.

Development Services and Opportunities Include:

- Low Fees, Fee Deferrals and Offsets
- Available and Lower Cost-Land and Buildings
- Low-Cost Project Review Service
- Custom Financial Incentives and Subsidy Packages Available
- Dedicated Economic Development and Entitlement Staff
- Regional Partnerships and Collaborations
- Plentiful Housing Opportunities

Hemet is positioned to be a home base for emerging markets, such as Electric Vehicle Technology, Battery Storage, Financial Tech Companies, Laboratories, Biotechnology and Research and Development facilities.



## NEARBY ATTRACTIONS

The City of Hemet is located in the beautiful Diamond Valley within close proximity to nearby destinations and opportunities.

- Coachella Valley
- Palm Springs Aerial Tram
- Soboba Casino
- Idyllwild Mountains
- Diamond Valley Lake
- Wildflower Trail
- Salt Creek Trail
- Ramona Bowl Amphitheatre
- Western Science Center
- Hemet Downtown Village Theatre & Hemet Museum
- Tranquil Hearts Vineyard & Winery
- Temecula Wine Country