

FOR SALE

2035 STATE ST SCHENECTADY, NY 12304



148,697

PEOPLE WITHIN 5 MILES



16,989

VEHICLES PER DAY



\$75,057

MEDIAN HH INCOME

LISTING SUMMARY

2,200 +/- SF approved building with drive-thru on a 1.0 +/- corner lot available for sale. Located on the North side of State Street (Route 5) and west of Balltown Road intersection (Route 146) in Schenectady, NY. Building has been demo-ed.

Sale Price: \$850,000

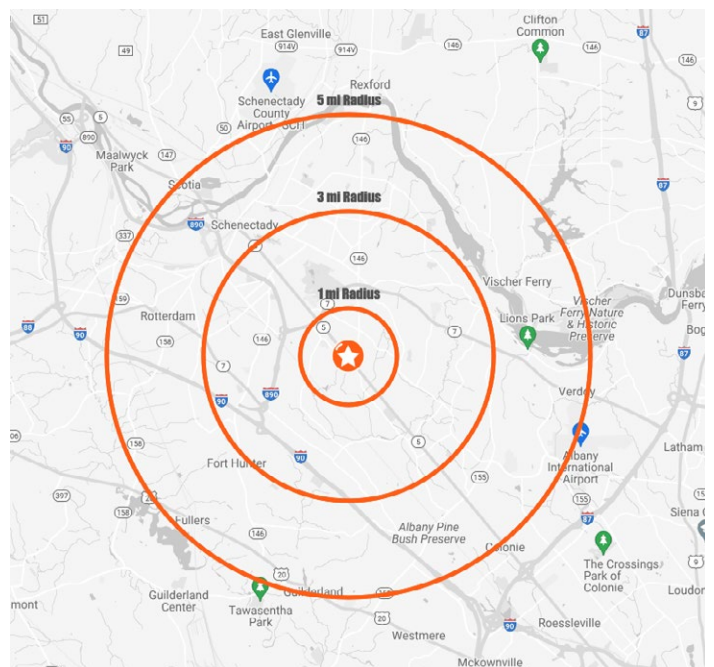
Lot Size: 1.0 Acres

Building Size: Approved 2,200 +/- SF drive-thru

TRAFFIC COUNTS

State Street (Route 5) 16,989 VPD

Balltown Rd (Route 146) 11,739 VPD



NEARBY RETAILERS

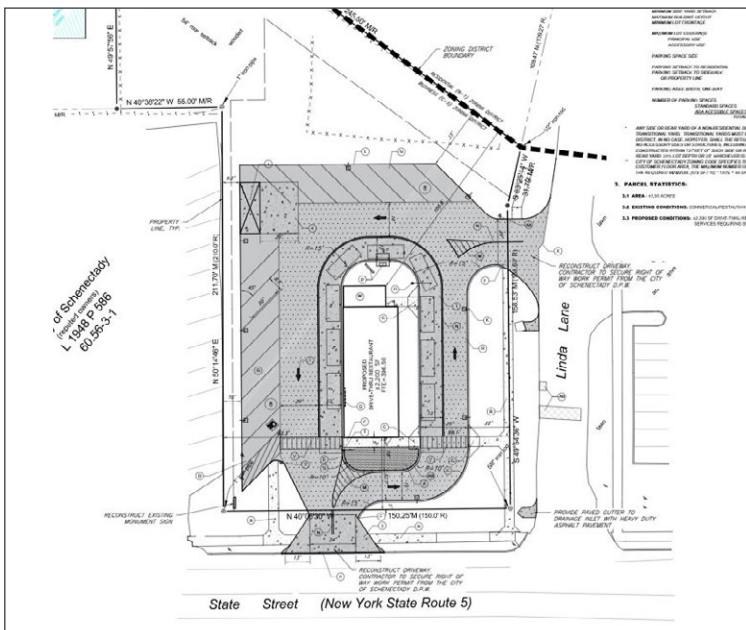
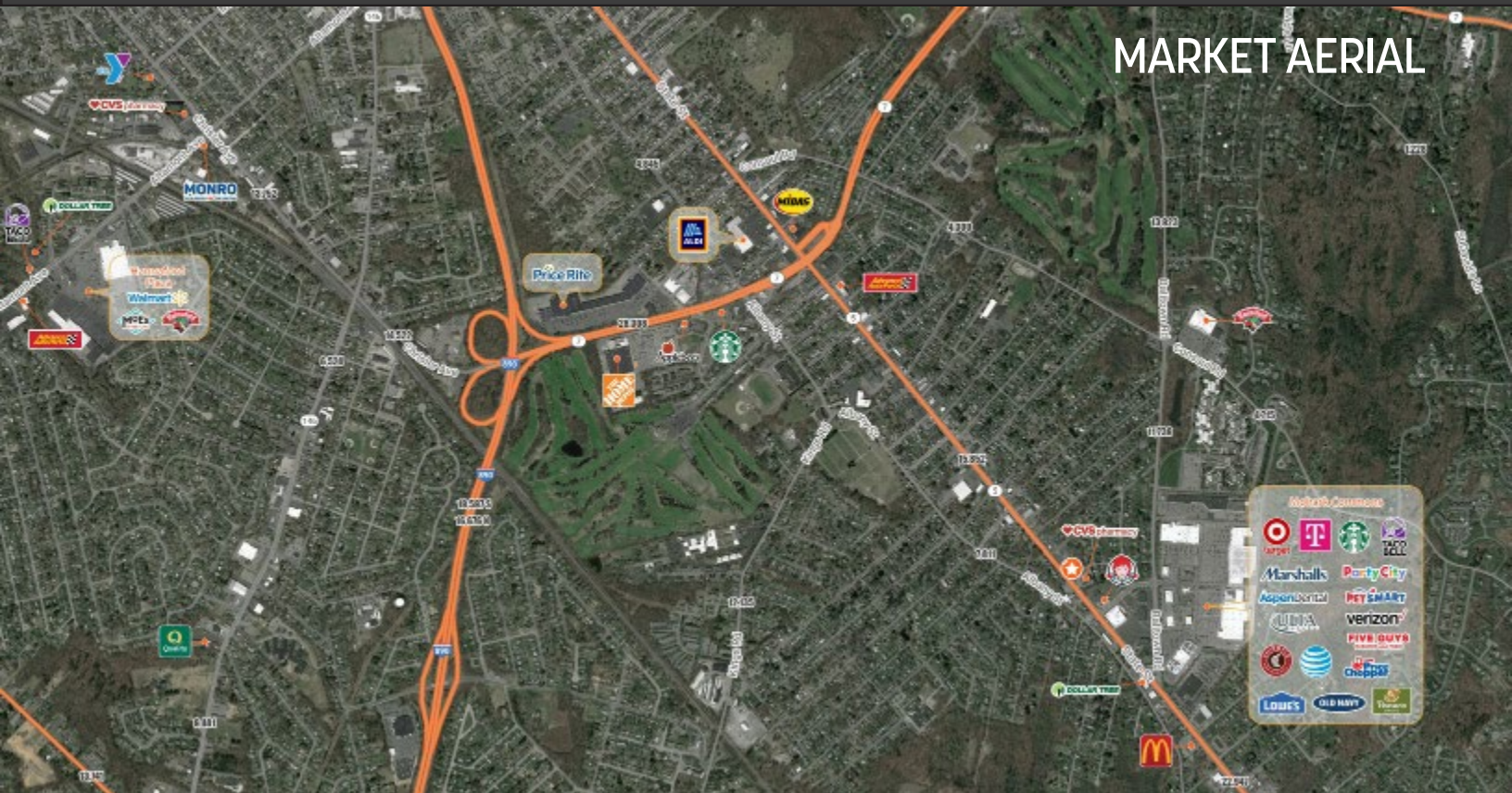


DEMOGRAPHIC

	1 MILE	3 MILE	5 MILE
Population	8,613	75,109	148,697
Median HH Income	\$68,656	\$76,329	\$75,057
Households	3,913	30,406	60,713
Employees	3,560	25,586	71,676

FOR LEASE
2035 STATE ST SCHENECTADY, NY 12304

Caliber
Commercial Brokerage



SITE PLAN

SITE AERIAL

JAKE RIVERA, PARTNER
Licensed Associate Real Estate Broker
M: 585.454.4500 x118
jriviera@caliberbrokerage.com

CALIBER COMMERCIAL BROKERAGE LLC
1657 East Avenue | Rochester, NY 14610
caliberbrokerage.com
585.454.4500