

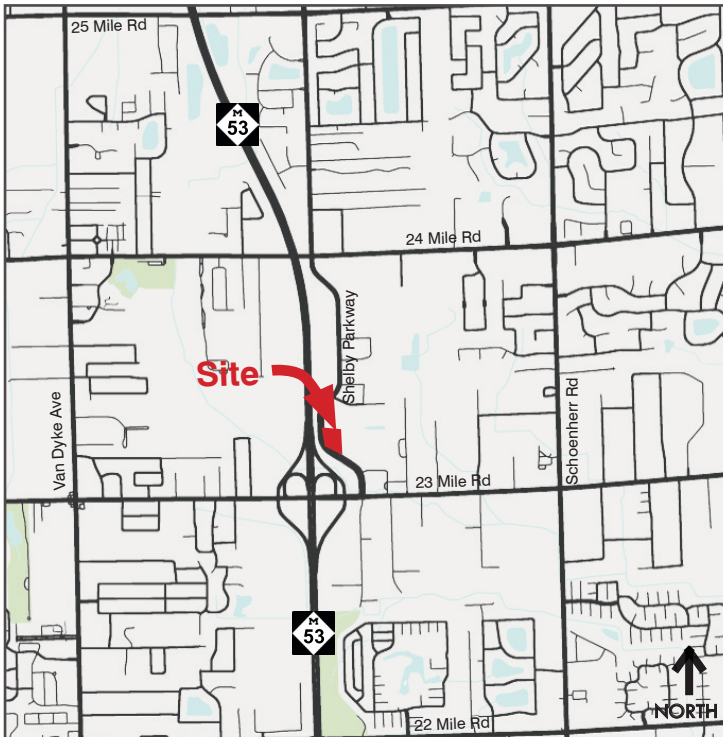


Vacant Land in Cherry Creek Corporate Park

Shelby Parkway, Shelby Township, MI 48315



Information is subject to verification and change. No liability for errors or omissions is assumed. Price is subject to change and listing withdrawn.



PROPERTY FEATURES

- Commercial land on Shelby Parkway, north of 23 Mile Road, with easy access to M-53
- Strategically located in a highly populated area with close proximity to a heavy automotive, defense and aerospace manufacturing corridor
- Up to 90,000 SF commercial available
- Close proximity to M-53, M-59, I-94 and I-75
- Tax abatement available for qualified users

CONTACT

Leasing
Phone
Email

Gina D'Agostini & Sara D'Agostini
586.977.8640 ext. 240 & 229
info@dagostini.net

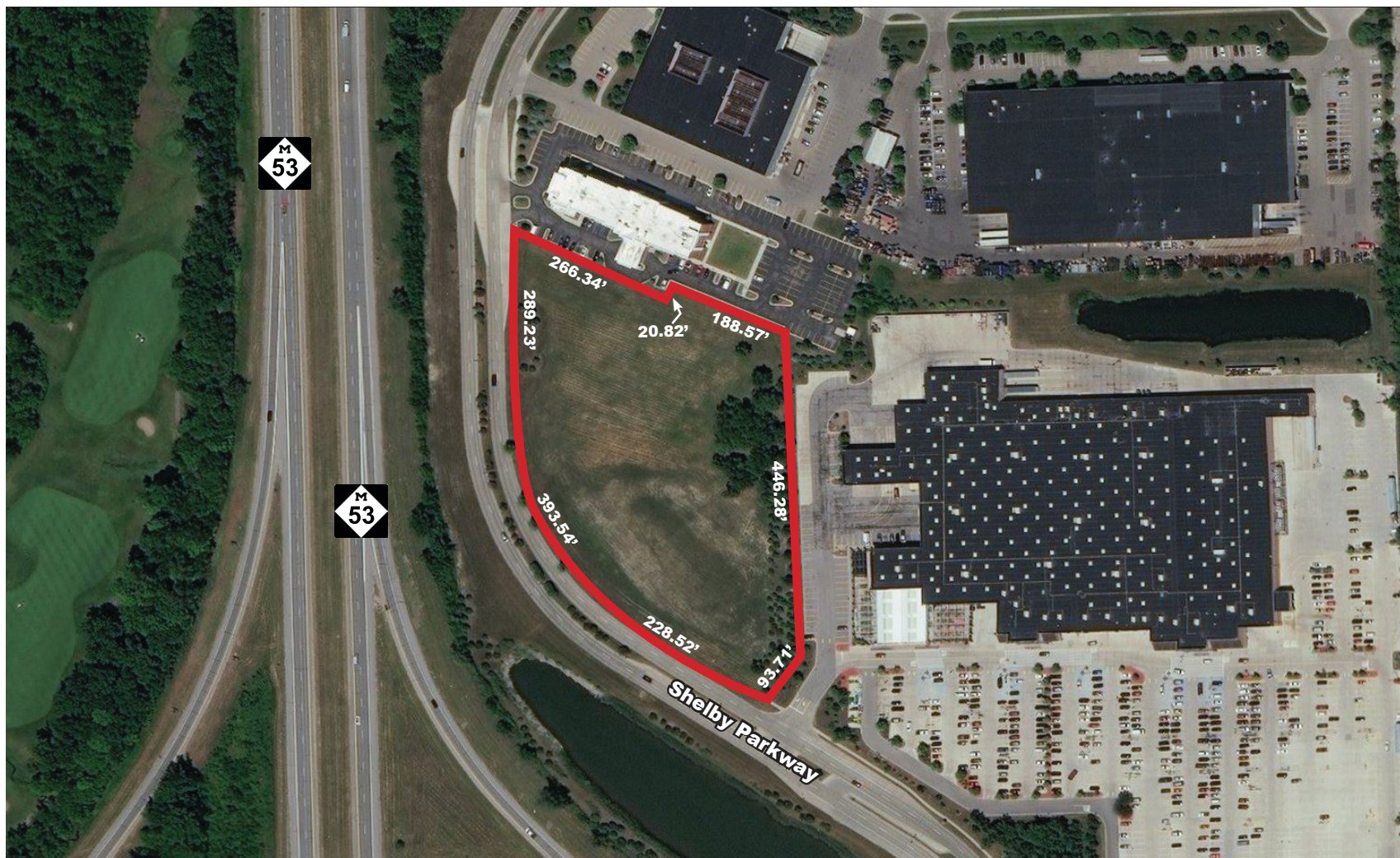
Please see reverse for site plan and space features >

Vacant Land in Cherry Creek Corporate Park

Shelby Parkway, Shelby Township, MI 48315



Information is subject to verification and change. No liability for errors or omissions is assumed. Price is subject to change and listing withdrawn.



↑
NORTH