

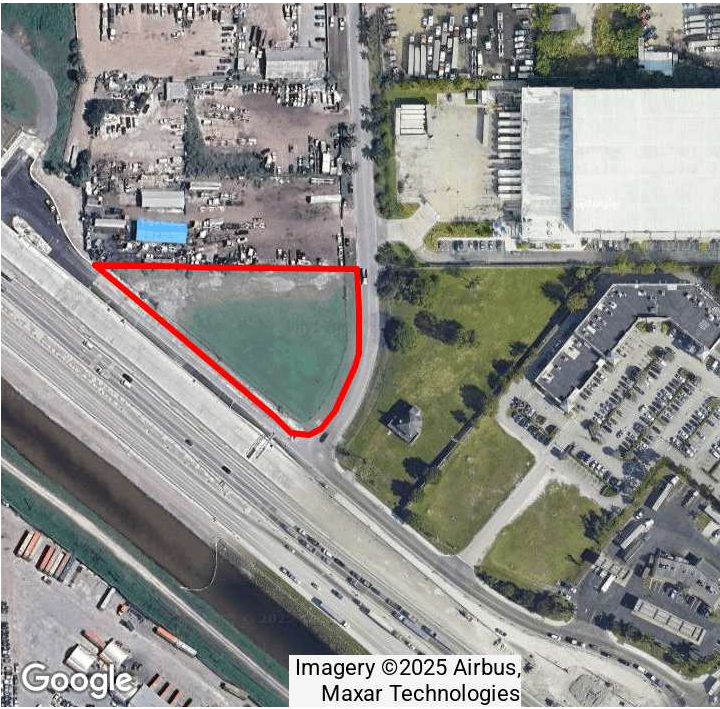
Land For Lease

10721 NW 138th St

10721 NW 138th St
Hialeah, FL 33018



SUMMARY



PROPERTY DESCRIPTION

This land is conveniently located near major transportation routes, including Okeechobee Road and the Florida Turnpike, facilitating easy access for logistics and commuting. The surrounding area is also comprised of a mix of industrial facilities and commercial establishments, making it suitable for various business operations.

PROPERTY HIGHLIGHTS

- Seamless connectivity to major highways for commuters and businesses.
- Located within a well-traveled area, offering increased visibility.
- Surrounded by a mix of industrial and commercial properties.

OFFERING SUMMARY

Lease Rate:	Negotiable
Available Size:	1.47 Acres/64,033 SF

For More Information Contact:

Philip Wyllie

Director of Leasing

954.257.7953

philipw@grahamcos.com

Land For Lease

10721 NW 138th St

10721 NW 138th St
Hialeah, FL 33018



ADDITIONAL PHOTOS



For More Information Contact:

Philip Wyllie

Director of Leasing

954.257.7953

philipw@grahamcos.com

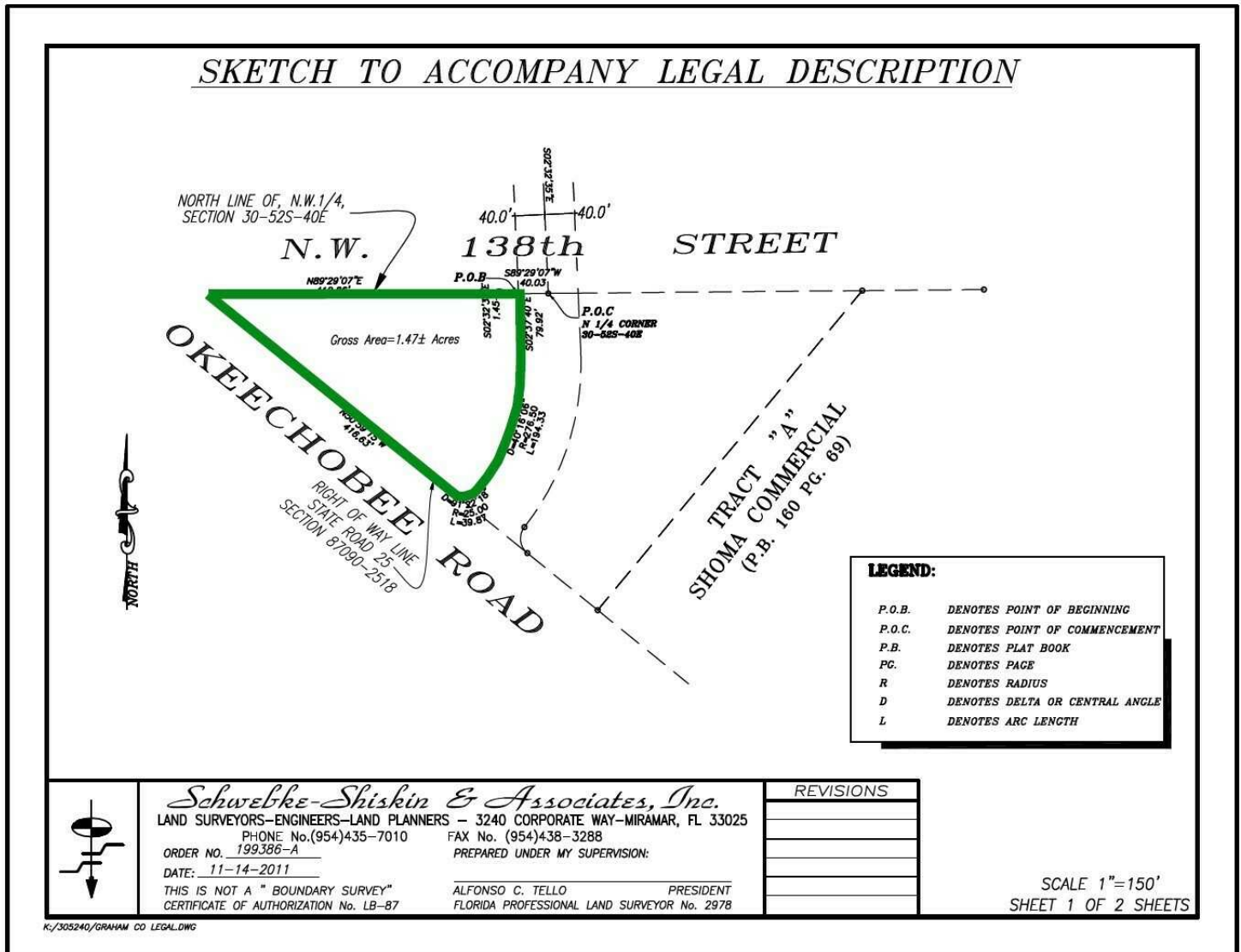
Land For Lease

10721 NW 138th St

10721 NW 138th St
Hialeah, FL 33018



SITE PLAN



For More Information Contact:

Philip Wyllie

Director of Leasing

954.257.7953

philipw@grahamcos.com