

For Lease: Office

350-390 Queens Quay W

Waterfront Office on Queens Quay W with views of Lake Ontario

Lennard:

200-55 University Avenue, Toronto
416.649.5920

lennard.com

350-390 Queens Quay W

Multiple office space available at The Quay, fronting Toronto’s beautiful & renovated, Waterfront.

350 Queens Quay W



Available Space

Suite 204A: 1,450 SF
Suite 204B: 1,700 SF
Total: 3,150 SF

Note: Potential expansion of 2,900 SF available on 90 days notice.
An additional 450 SF is currently being built out with this expansion space of 2,900 SF.



Availability

Immediate



Net Rent

\$25.00 PSF

Additional Rent

\$19.00 PSF (2023)

Building Highlights

- Available units benefit from updated building services
- Substantial pedestrian, cyclist and vehicle traffic along the Queens Quay
- Parking \$225.00/monthly (based on availability)



THE QUAY

Premium Waterfront Apartments



Listing Agent

Sam Buckley*

Associate Vice President

416.649.5936

sbuckley@lennard.com

*Sales Representative

390 Queens Quay W



Available Space

Suite 209: 6,118 SF
Suite 210: 9,082 SF
Total: 15,200 SF

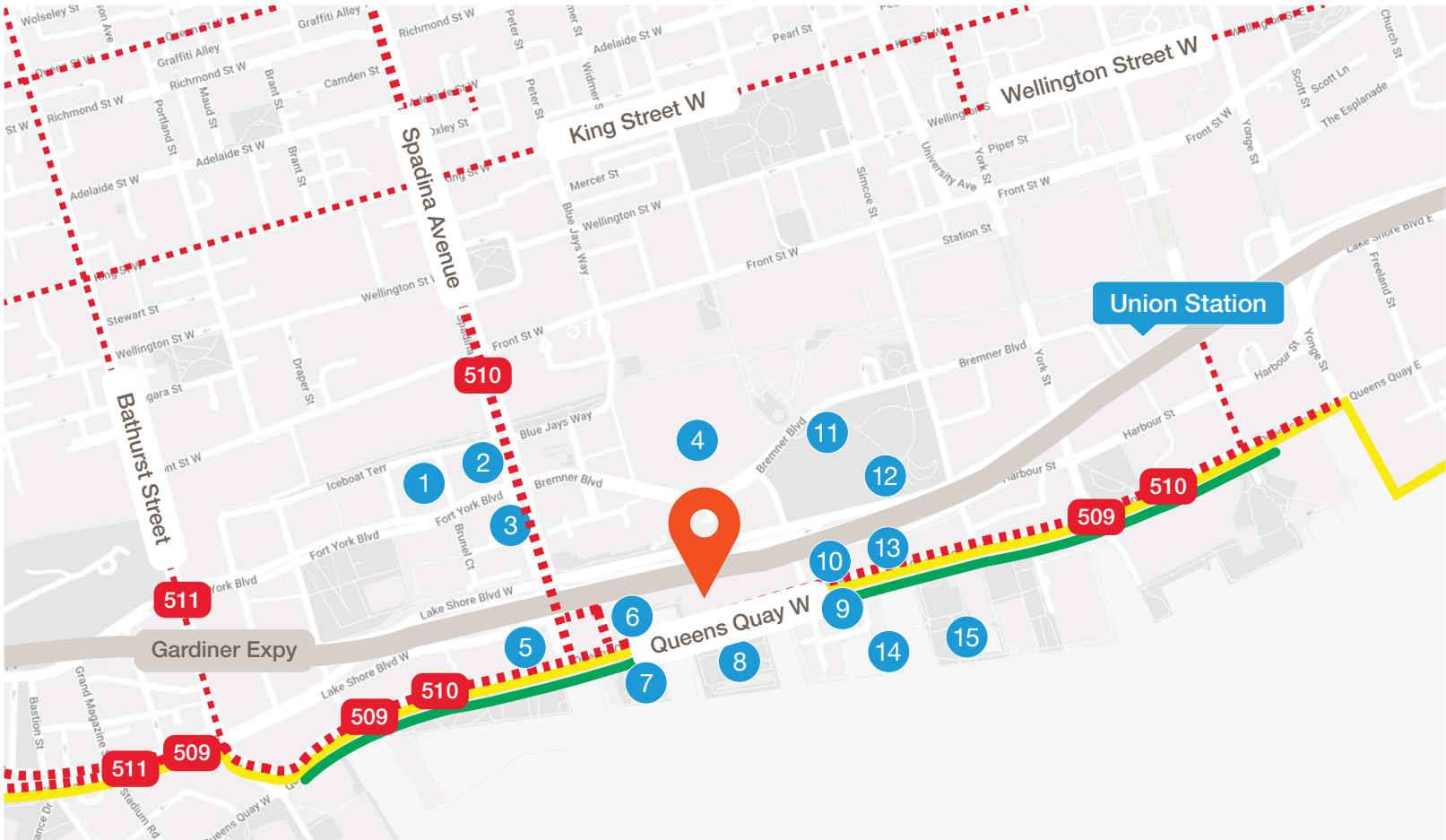


Availability

July 1, 2023

Commission

\$2.00 PSF
per annum to the
Co-operating
Broker



--- TTC Streetcar

--- Bike Lane

--- Martin Goodman Trail



Property Location: 350-390 Queens Quay W

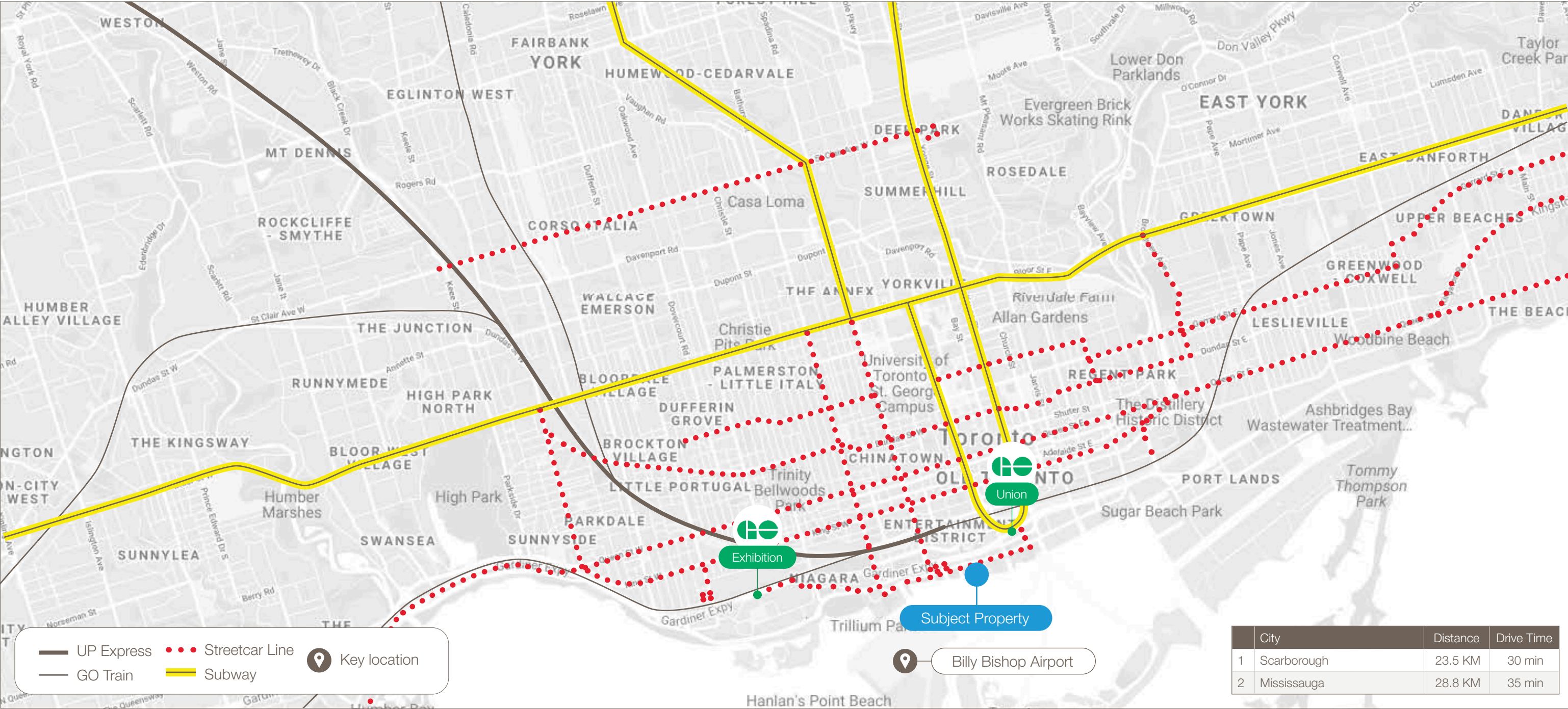
- 1 Sobey's Urban Fresh Spadina
- 2 Fox and the Fiddle
- 3 Starbucks
- 4 Rogers Centre
- 5 Starbucks
- 6 BBQ Chicken
- 7 HTO Park West
- 8 HTO Park / HTO Beach

- 9 Tim Hortons
- 10 Pizzaiolo Gourmet Pizza
- 11 Lick it Gelato
- 12 Steam Whistle Brewing / Biergarten
- 13 REC Room
- 14 Amsterdam Brewhouse
- 15 The Slip

Statements and information contained are based on the information furnished by principals and sources which we deem reliable but for which we can assume no responsibility. Lennard Commercial Realty, Brokerage.

350-390 Queens Quay W

Transit Overview

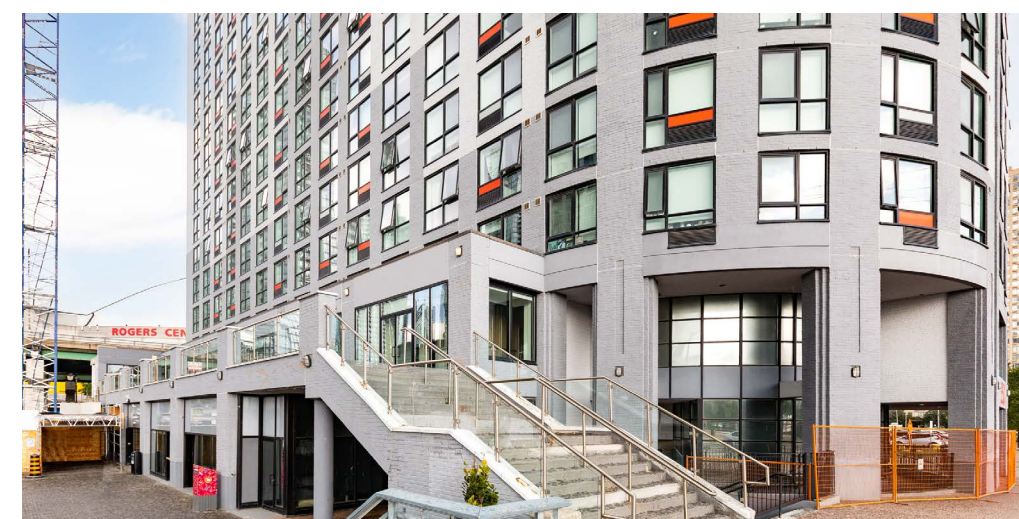
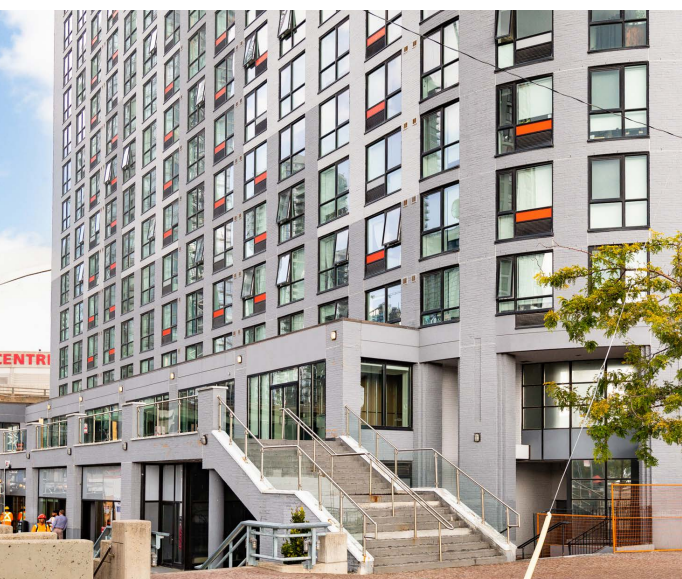
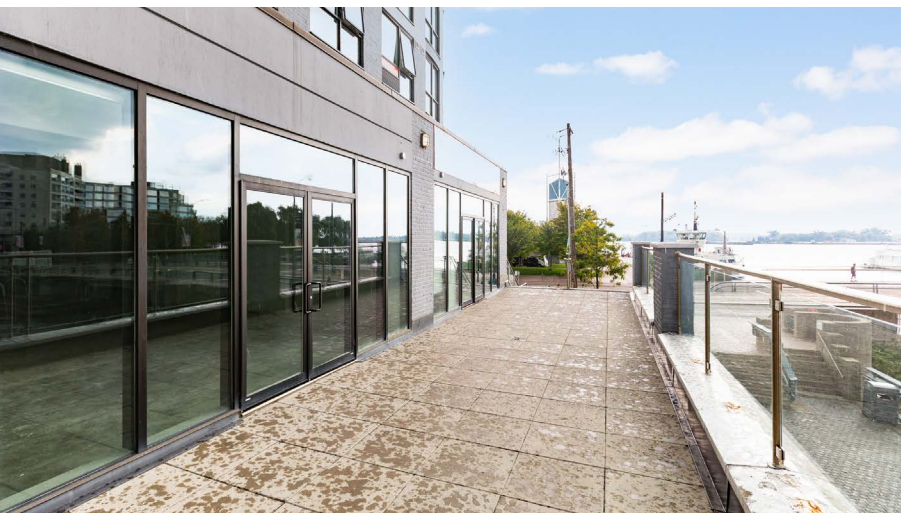




350-390 Queens Quay W

The immediate area boasts strong demographics with over 500,000 residents, 6+ million square feet of office space and significant foot traffic with highly active daytime and evening populations. The Queens Quay & Spadina corridor fosters a professional identity that is infused with an active community and an aura of rich culture and diversity.

The Queens Quay neighborhood is filled with exciting new places to live, work, learn and play including first-class connectivity to the rest of the city via Toronto's Spadina and Harbourfront Streetcar lines only a few short steps away. Strong Co-Tenancies On Queens Quay Include Shoppers Drug Mart, Canada Post, The Beer Store, Starbucks, Pizzaiolo and much more.



350-390 Queens Quay W

Floor Plan: 350 Queens Quay W



Available Space

Suite 204A: 1,450 SF

Suite 204B: 1,700 SF

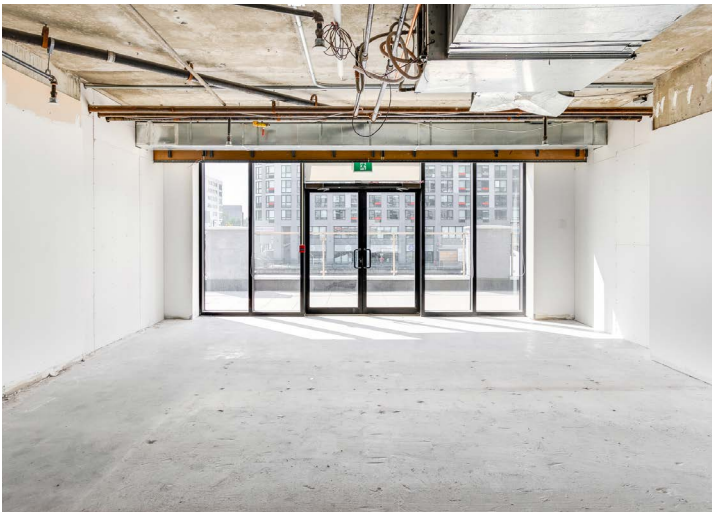
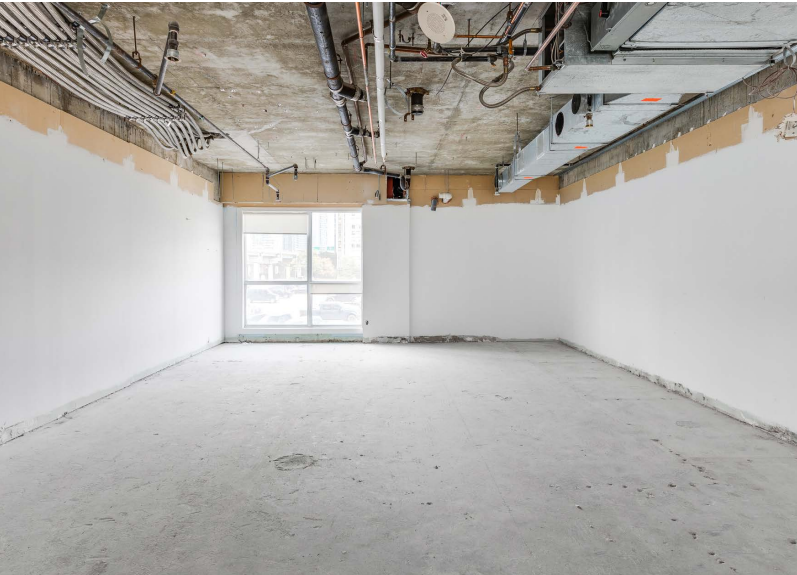
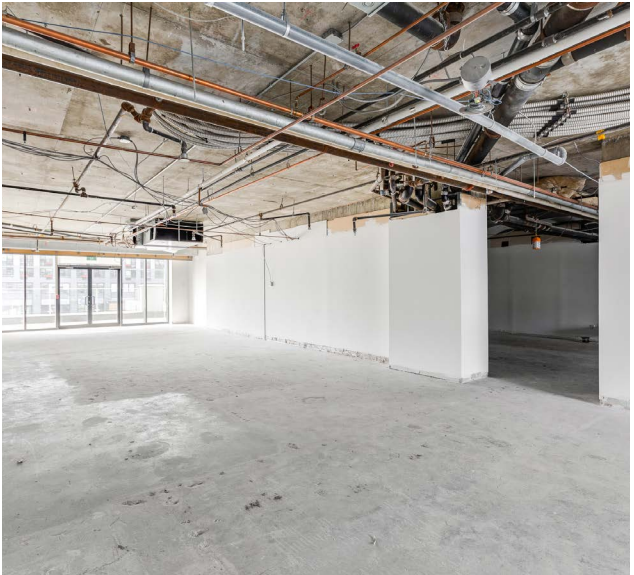
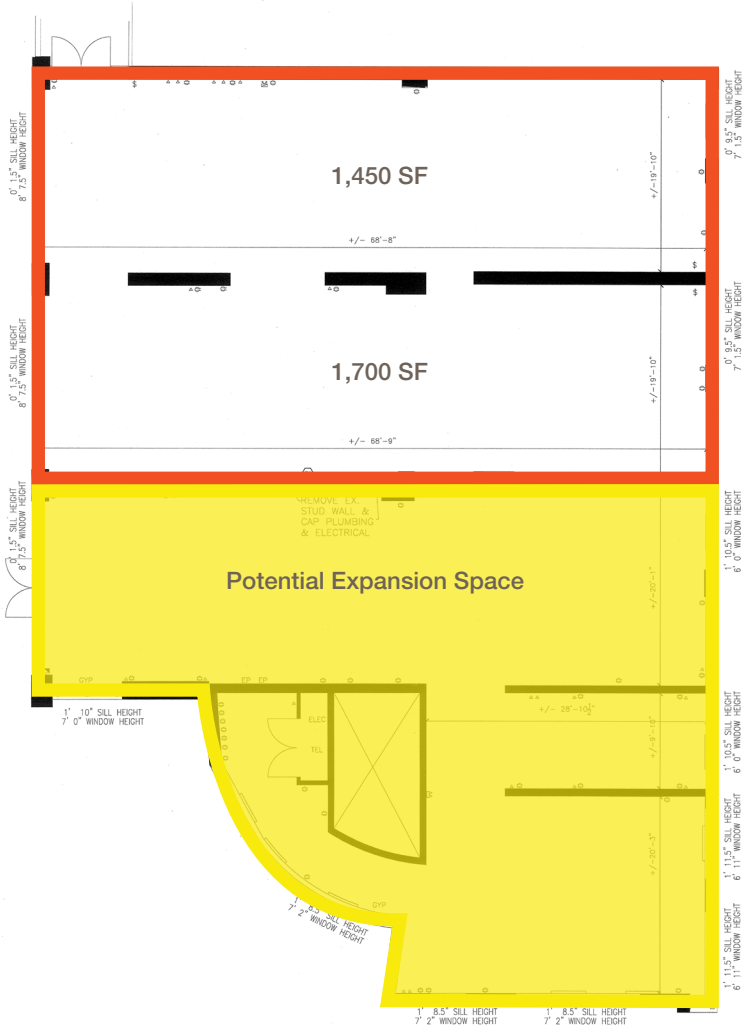
Total: 3,150 SF



Note: Potential expansion of 2,900 SF available on 90 days notice. An additional 450 SF is currently being built out with this expansion space of 2,900 SF.

Property Highlights

- Large open space
- Filled with natural light from panoramic windows overlooking Lake Ontario
- Dedicated walk-up entrance from Queens Quay W
- Fully contained workplace environment without common ingress/egress or elevator
- Adjacent amenities include HTO Park, HTO Beach and the Martin Goodman Trail
- World-class transit (streetcar, subway and dedicated bike lanes)



350-390 Queens Quay W

Floor Plan: 390 Queens Quay W



Available Space

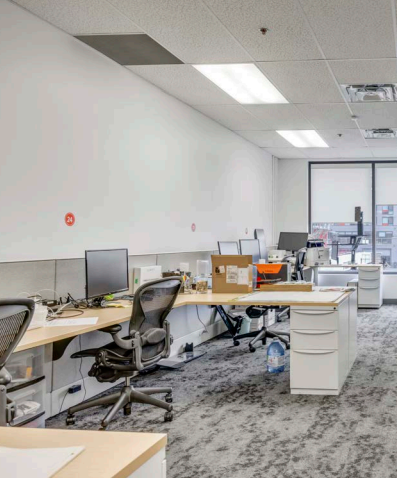
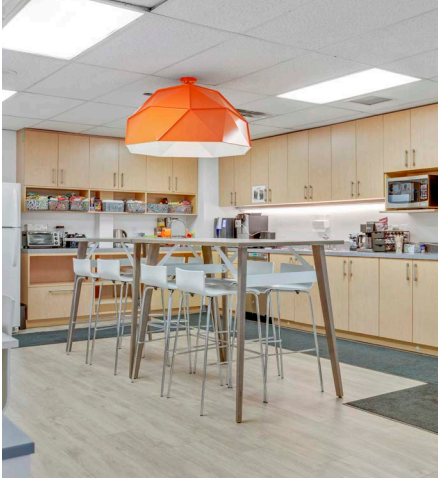
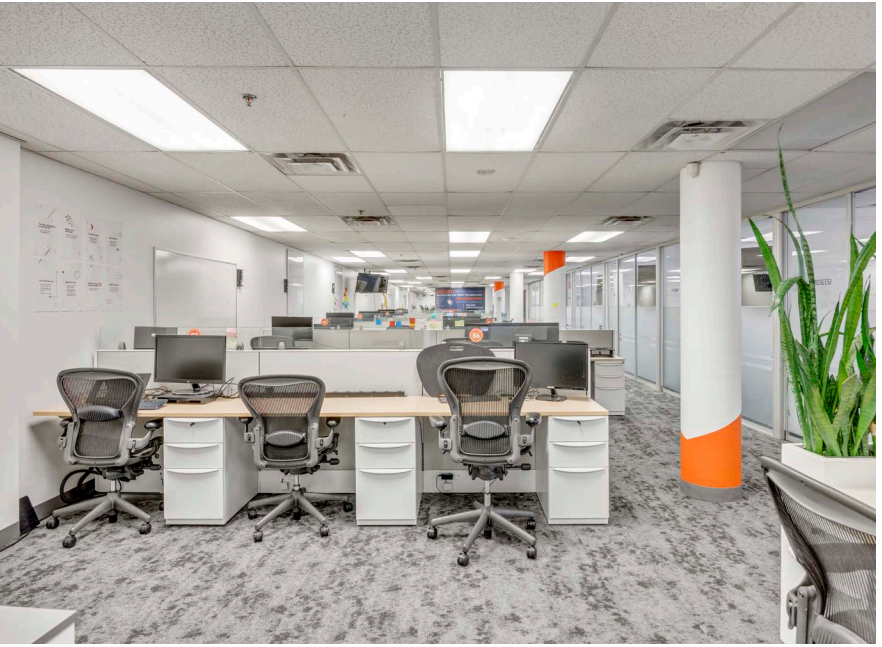
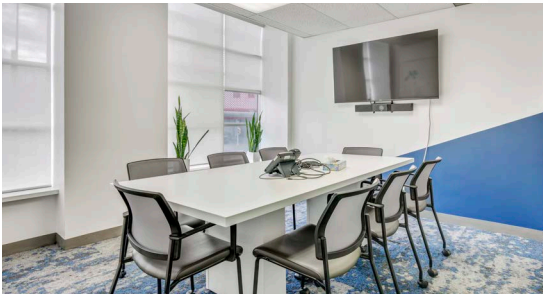
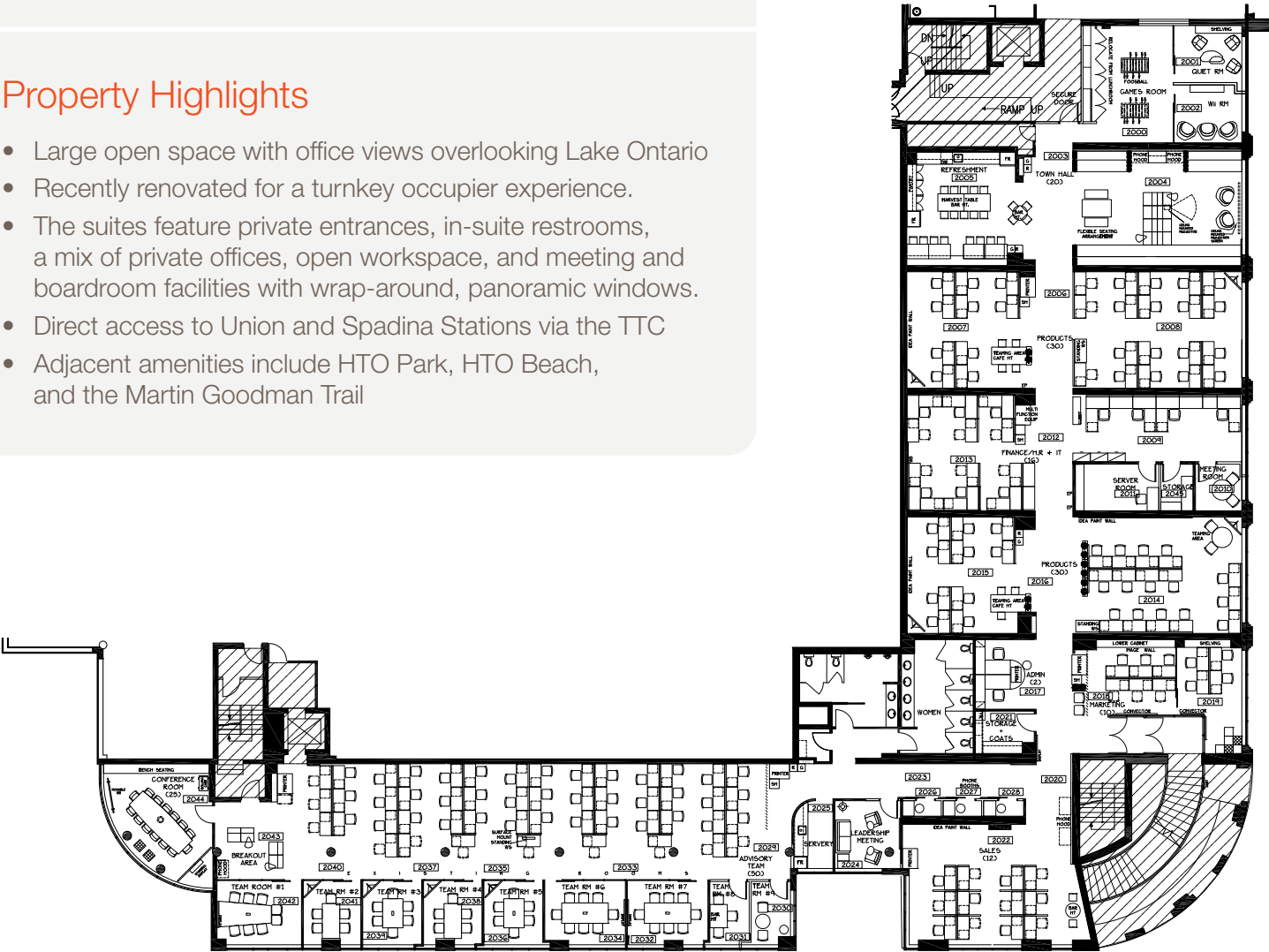
Suite 209: 6,118 SF

Suite 210: 9,082 SF

Total: 15,200 SF

Property Highlights

- Large open space with office views overlooking Lake Ontario
- Recently renovated for a turnkey occupier experience.
- The suites feature private entrances, in-suite restrooms, a mix of private offices, open workspace, and meeting and boardroom facilities with wrap-around, panoramic windows.
- Direct access to Union and Spadina Stations via the TTC
- Adjacent amenities include HTO Park, HTO Beach, and the Martin Goodman Trail



Lennard:

Sam Buckley*, Associate Vice President
416.649.5936
sbuckley@lennard.com

200-55 University Avenue, Toronto
416.649.5920
lennard.com

*Sales Representative

Statements and information contained are based on the information furnished by principals and sources which we deem reliable but for which we can assume no responsibility. Lennard Commercial Realty, Brokerage.