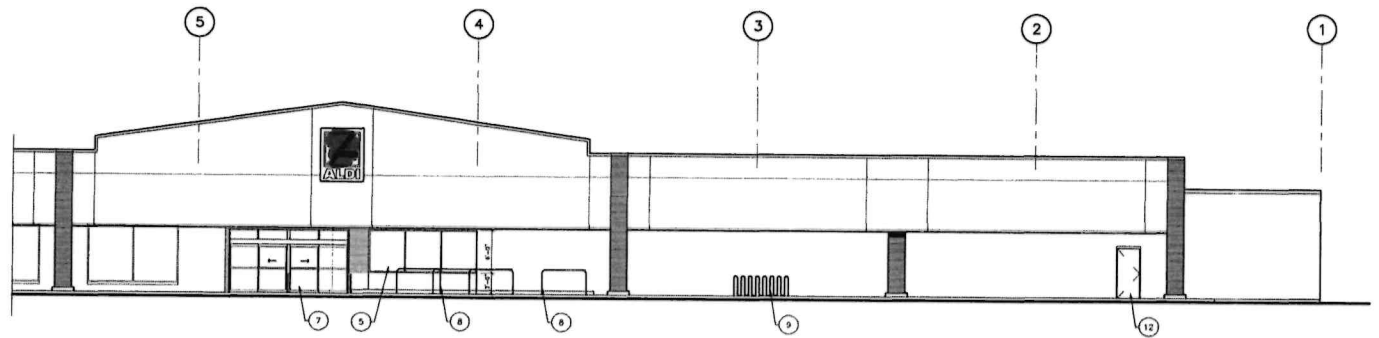


PARTIAL NORTH ELEVATION - DEMOLITION



PARTIAL NORTH ELEVATION - NEW

**EXTERIOR ELEVATION NOTES:**

- |   |                                       |
|---|---------------------------------------|
| 1. EXIST. FACE BRICK TO REMAIN TO REMAIN.           | 2. NEW CLEAR ALUM. ENTRY/EXIT SYSTEM. |
| 2. EXIST. ALUM. WINDOWS TO REMAIN.                  | 8. NEW CART RAILINGS.                 |
| 3. EXIST. EPS CANOPY TO REMAIN.                     | 9. NEW BIKE RACK.                     |
| 4. EXISTING SIGN TO REMAIN.                         | 10. EXIST. WINDOW TO BE REMOVED.      |
| 5. NEW 1" BQGL. GLASS IN CLEAR ALUM. FRAMES.        | 11. NEW MASONRY OPENING.              |
| 6. EXIST. ENTRY/EXIT SYSTEM TO BE REMOVED COMPLETE. | 12. NEW HM DOOR AND FRAME.            |

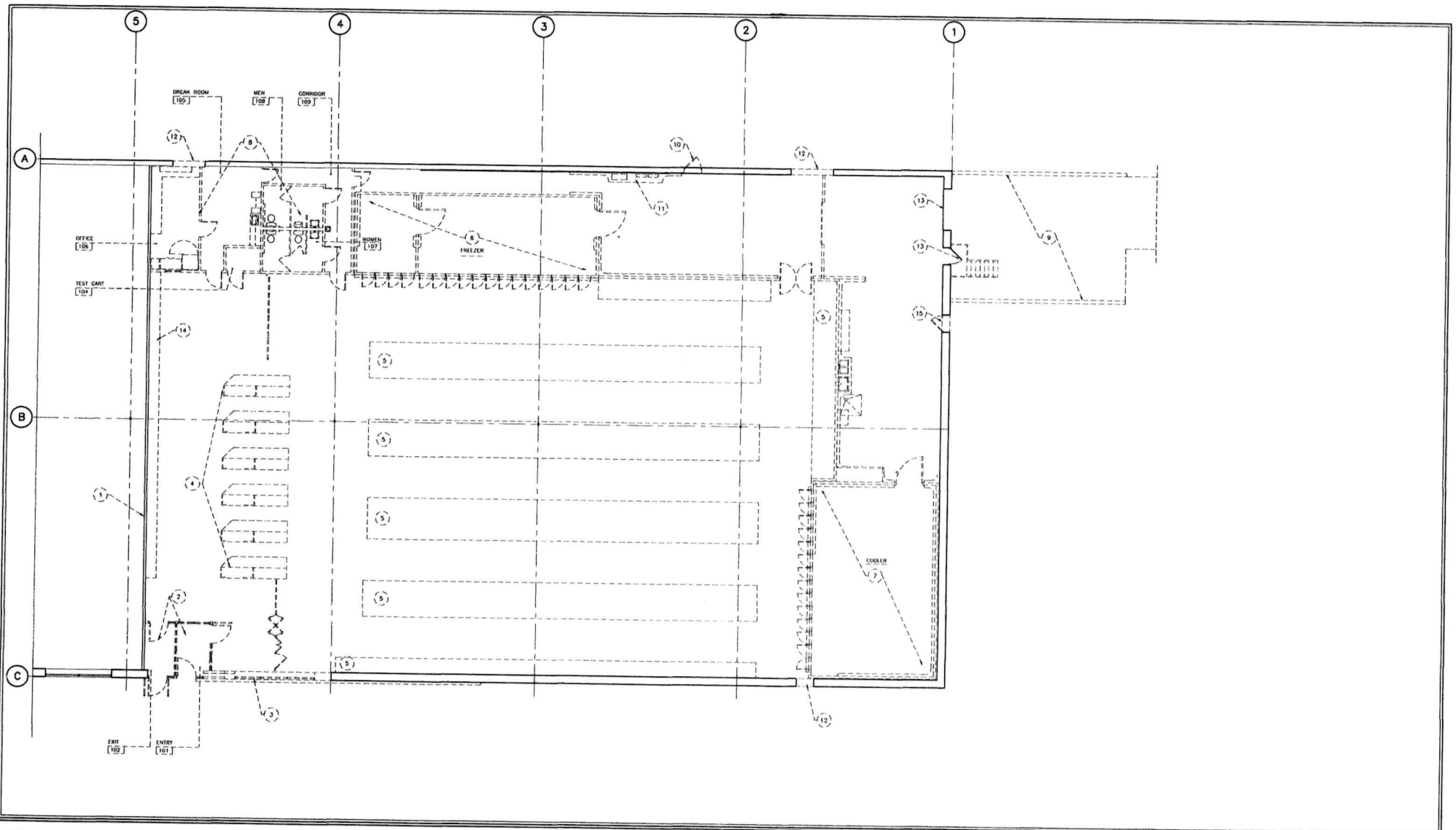
**ADI**  
 ADINE DESIGN/ARCHITECTURE  
 INCORPORATED  
 6430 N. OLYMPIA AVENUE CHICAGO, ILLINOIS 60631  
 773.594.3630

**REMODELING**  
 Streamwood  
 Illinois

DATE:	3.31.01	PROJECT NUMBER:	01426
DRAWN:	SGP.		
APP'D:			
SCALE:	1/8"=1'		
ISSUES			
NO.	DATE	DESCRIPTION	
1			
2			
3			
4	01.18.01	PERMIT/NO	
3	10.22.00	PRELIM. REVIEW	
2	10.22.00	PRELIM. REVIEW	
1	10.22.01	PRELIM. REVIEW	

**A.4**

EXTERIOR ELEVATIONS



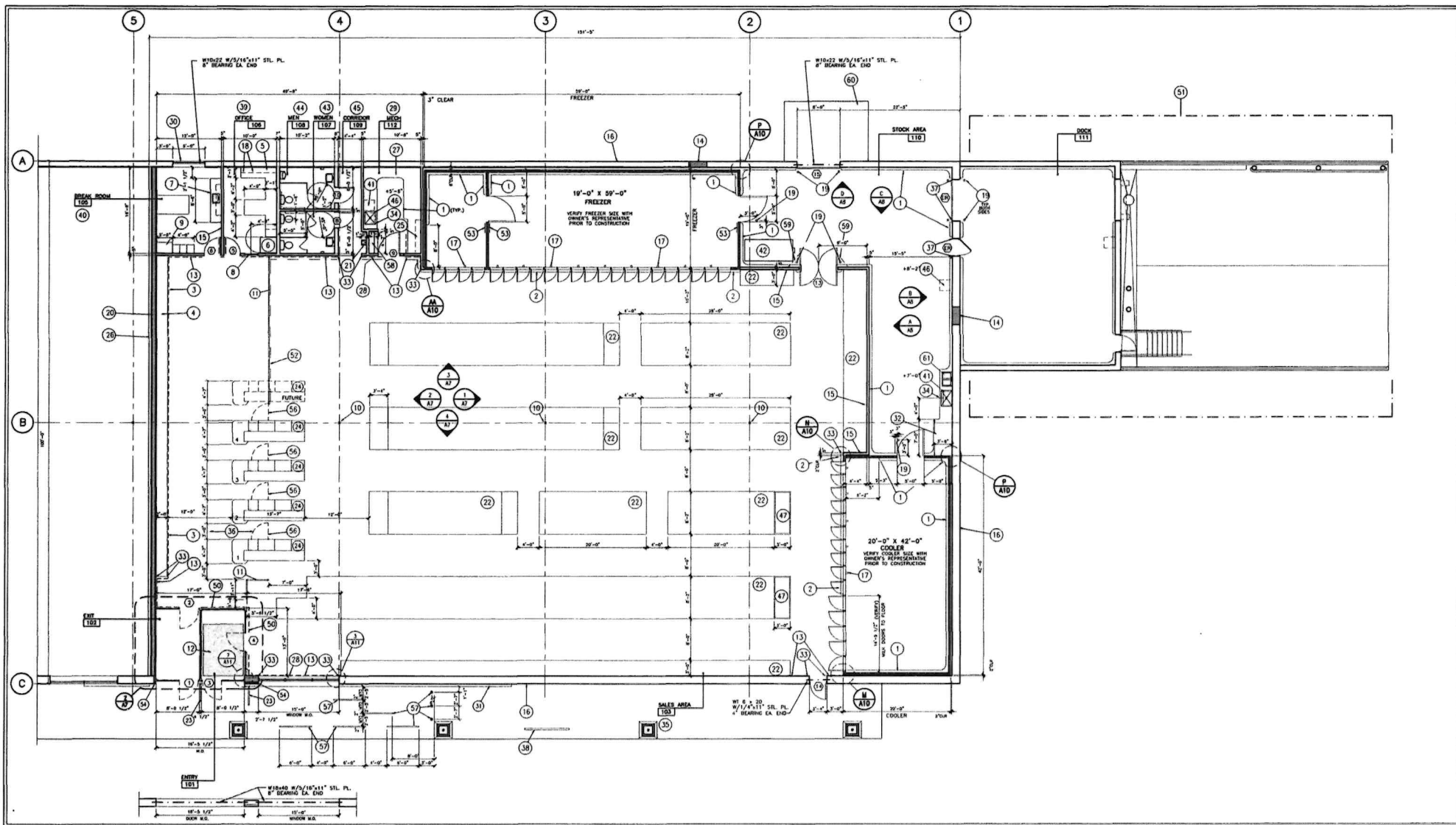
- NOTES:**
1. EXISTING DEMISING WALL TO REMAIN.
  2. EXISTING VESTIBULE TO BE REMOVED COMPLETE.
  3. EXISTING WINDOW TO BE REMOVED.
  4. EXISTING CASHIERS TO BE REMOVED.
  5. EXISTING SHELVING TO BE REMOVED.
  6. EXISTING FREEZER TO BE REMOVED.
  7. EXISTING COOLER TO BE REMOVED.
  8. EXISTING ROOMS TO BE REMOVED.
  9. EXISTING DOCK PIT TO BE REMOVED. REFER TO ATTACHED REFERENCE DRAWINGS FOR DOCK ADDITION.
  10. EXISTING DOOR AND FRAME TO BE REMOVED.
  11. EXISTING ELECTRICAL SERVICE TO BE RELOCATED.
  12. NEW MASONRY OPENING. SEE A.2.
  13. EXISTING DOOR TO REMAIN.
  14. EXISTING COUNTER TO BE REMOVED.
  15. EXISTING COMPACTOR DOOR TO BE REMOVED.

**ADI**  
 ADIME  
 DESIGN/ARCHITECTURE  
 INCORPORATED  
 6430 N. OLYMPIA AVENUE CHICAGO, ILLINOIS 60631  
 773.594.8630

**REMODELING**  
 Streamwood  
 Illinois

NO.	DATE	DESCRIPTION
4	11.18.01	PERMIT/BD
3	10.25.01	PRELIM. REVIEW
2	10.24.01	PRELIM. REVIEW
1	6.2.01	PRELIM. REVIEW
		DISCUSSION
		1 5 5 U E S

DATE: 3.31.01  
 PROJECT NUMBER: 01428  
 DRAWN BY: SGP.  
 APPR'D: PSM.  
 SCALE: 1/8"=1'  
**A.5**  
 DEMOLITION  
 PLAN



**FLOOR PLAN NOTES (FINISHED AND INSTALLED BY GENERAL CONTRACTOR UNLESS OTHERWISE NOTED)**

1. CONCRETE CURB. SEE DETAIL C/A/10
2. STAIRCASE ENCL. CURB. SEE DETAIL C/A/9
3. BUMPER CURB. SEE DETAIL A/A/9
4. SCHED. COUNTERTOP SEE DETAIL F/A/10 (IF ORDERED, INSTALLED BY CONTRACTOR)
5. COUNTER. SEE DETAIL G/A/10
6. SAFE (IF ORDERED) ON STEEL PLATFORM (IF ORDERED, INSTALLED BY CONTRACTOR). SEE ELEVATION L/A/10
7. SCHEDULE CABINET WITH CABINET ABOVE. SEE ELEVATION L/A/10
8. REFERENCE (IF ORDERED, INSTALLED BY CONTRACTOR) AND CONF. ROOM (SCHEDULED BY CONTRACTOR). SEE L/A/10
9. COLLARS TO BE WELDED W/STAINLESS STEEL. SEE DETAIL F/A/9
10. CRUSHED SECURITY WALL (IF ORDERED) INSTALLED BY GENERAL CONTRACTOR.
11. ENTRY AND SEE SPECIFICATION. COMPLETE THE WALL, FLOOR, CEILING OF THE ENTRY, SET AND TRIM.
12. BARRIER CURB. SEE DETAIL B/A/9
13. BARRIER CURB. SEE DETAIL B/A/9
14. SAFETY
15. FLOOR FINISHING, MACHINERY OPENING
16. FLOOR FINISHING, MACHINERY OPENING
17. FLOOR FINISHING, MACHINERY OPENING
18. FLOOR FINISHING, MACHINERY OPENING
19. FLOOR FINISHING, MACHINERY OPENING
20. FLOOR FINISHING, MACHINERY OPENING
21. FLOOR FINISHING, MACHINERY OPENING
22. FLOOR FINISHING, MACHINERY OPENING
23. FLOOR FINISHING, MACHINERY OPENING
24. FLOOR FINISHING, MACHINERY OPENING
25. FLOOR FINISHING, MACHINERY OPENING
26. FLOOR FINISHING, MACHINERY OPENING
27. FLOOR FINISHING, MACHINERY OPENING
28. FLOOR FINISHING, MACHINERY OPENING
29. FLOOR FINISHING, MACHINERY OPENING
30. FLOOR FINISHING, MACHINERY OPENING
31. FLOOR FINISHING, MACHINERY OPENING
32. FLOOR FINISHING, MACHINERY OPENING
33. FLOOR FINISHING, MACHINERY OPENING
34. FLOOR FINISHING, MACHINERY OPENING
35. FLOOR FINISHING, MACHINERY OPENING
36. FLOOR FINISHING, MACHINERY OPENING
37. FLOOR FINISHING, MACHINERY OPENING
38. FLOOR FINISHING, MACHINERY OPENING
39. FLOOR FINISHING, MACHINERY OPENING
40. FLOOR FINISHING, MACHINERY OPENING
41. FLOOR FINISHING, MACHINERY OPENING
42. FLOOR FINISHING, MACHINERY OPENING
43. FLOOR FINISHING, MACHINERY OPENING
44. FLOOR FINISHING, MACHINERY OPENING
45. FLOOR FINISHING, MACHINERY OPENING
46. FLOOR FINISHING, MACHINERY OPENING
47. FLOOR FINISHING, MACHINERY OPENING
48. FLOOR FINISHING, MACHINERY OPENING
49. FLOOR FINISHING, MACHINERY OPENING
50. FLOOR FINISHING, MACHINERY OPENING
51. FLOOR FINISHING, MACHINERY OPENING
52. FLOOR FINISHING, MACHINERY OPENING
53. FLOOR FINISHING, MACHINERY OPENING
54. FLOOR FINISHING, MACHINERY OPENING
55. FLOOR FINISHING, MACHINERY OPENING
56. FLOOR FINISHING, MACHINERY OPENING
57. FLOOR FINISHING, MACHINERY OPENING
58. FLOOR FINISHING, MACHINERY OPENING
59. FLOOR FINISHING, MACHINERY OPENING
60. FLOOR FINISHING, MACHINERY OPENING
61. FLOOR FINISHING, MACHINERY OPENING
62. FLOOR FINISHING, MACHINERY OPENING
63. FLOOR FINISHING, MACHINERY OPENING
64. FLOOR FINISHING, MACHINERY OPENING
65. FLOOR FINISHING, MACHINERY OPENING
66. FLOOR FINISHING, MACHINERY OPENING
67. FLOOR FINISHING, MACHINERY OPENING
68. FLOOR FINISHING, MACHINERY OPENING
69. FLOOR FINISHING, MACHINERY OPENING
70. FLOOR FINISHING, MACHINERY OPENING
71. FLOOR FINISHING, MACHINERY OPENING
72. FLOOR FINISHING, MACHINERY OPENING
73. FLOOR FINISHING, MACHINERY OPENING
74. FLOOR FINISHING, MACHINERY OPENING
75. FLOOR FINISHING, MACHINERY OPENING
76. FLOOR FINISHING, MACHINERY OPENING
77. FLOOR FINISHING, MACHINERY OPENING
78. FLOOR FINISHING, MACHINERY OPENING
79. FLOOR FINISHING, MACHINERY OPENING
80. FLOOR FINISHING, MACHINERY OPENING
81. FLOOR FINISHING, MACHINERY OPENING
82. FLOOR FINISHING, MACHINERY OPENING
83. FLOOR FINISHING, MACHINERY OPENING
84. FLOOR FINISHING, MACHINERY OPENING
85. FLOOR FINISHING, MACHINERY OPENING
86. FLOOR FINISHING, MACHINERY OPENING
87. FLOOR FINISHING, MACHINERY OPENING
88. FLOOR FINISHING, MACHINERY OPENING
89. FLOOR FINISHING, MACHINERY OPENING
90. FLOOR FINISHING, MACHINERY OPENING
91. FLOOR FINISHING, MACHINERY OPENING
92. FLOOR FINISHING, MACHINERY OPENING
93. FLOOR FINISHING, MACHINERY OPENING
94. FLOOR FINISHING, MACHINERY OPENING
95. FLOOR FINISHING, MACHINERY OPENING
96. FLOOR FINISHING, MACHINERY OPENING
97. FLOOR FINISHING, MACHINERY OPENING
98. FLOOR FINISHING, MACHINERY OPENING
99. FLOOR FINISHING, MACHINERY OPENING
100. FLOOR FINISHING, MACHINERY OPENING

**STORE DATA**

SALES VEST.	8,400 S.F.
OFFICE	180 S.F.
RESTROOM	100 S.F.
TOWEL	184 S.F.
COOLER	2840 S.F.
STOCK/COOK	2248 S.F.
OTHER AREAS	582 S.F.
<b>BUILDING TOTAL</b>	<b>16,164 S.F.</b>
SHED/WFV	740 L.F.

15,154 SF

**ADI**  
ADVICE DESIGN/ARCHITECTURE  
INCORPORATED  
6430 N. OLYMPIA AVENUE CHICAGO, ILLINOIS 60631  
773.994.610

DATE	PROJECT NUMBER
3.31.01	01425
DRAWN	SGP
APP'D	SGP
P.3.M.	
SCALE	
NO. DATE	DESCRIPTION
1	1/8"=1'

**REMOLDING**  
Streamwood  
Illinois

**A.2**

FLOOR PLAN