

Office Space Available for Lease



475 Sentry Parkway, Blue Bell, PA 19422

Property Highlights:

- 79,184 SF building
- 39,712 SF available immediately
can demise to 12,600+SF
- 293 parking spaces—219 covered, 74 uncovered with direct entry and elevator served.
- Located in the heart of Blue Bell, minutes from major highways.
- NO Business Privilege Tax in Whitpain Township
- Local amenities include Plymouth Meeting Mall, Whole Foods, and various eateries
- Grab and Go in the building
- Exclusive patio overlooking Wings Field.

[Virtual Tour](#)

For more information contact:

Gene McHale

gmchale@beaconcre.com

Colin McHale

cmchale@beaconcre.com

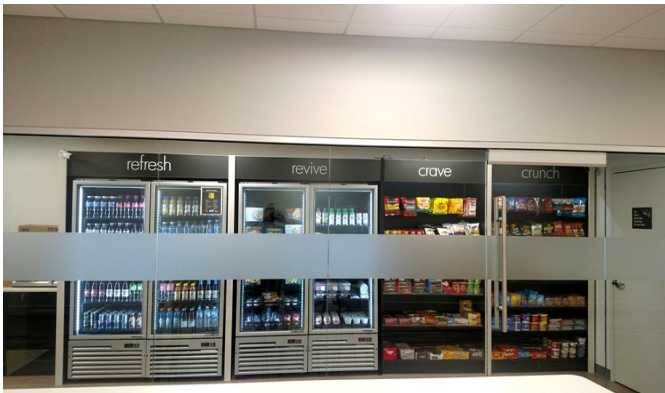
610.828.0100

290 King of Prussia Road | Building 1 | Suite 200 | Radnor, PA 19087 | 610.828.0100 (o) | 610.828.3873 (f) | www.beaconcre.com

No warranty or representation, expressed or implied, is made as to the accuracy of the information contained herein, and same is submitted subject to errors, omissions, change of price, rental or other conditions, withdrawal without notice, and to any special listing conditions imposed by our principals.

Beacon

Commercial Real Estate, LLC



290 King of Prussia Road | Building 1 | Suite 200 | Radnor, PA 19087 | 610.828.0100 (o) | 610.828.3873 (f) | www.beaconcre.com

No warranty or representation, expressed or implied, is made as to the accuracy of the information contained herein, and same is submitted subject to errors, omissions, change of price, rental or other conditions, withdrawal without notice, and to any special listing conditions imposed by our principals.

Office Space Available for Lease

39,712 SF
Will demise



290 King of Prussia Road | Building 1 | Suite 200 | Radnor, PA 19087 | 610.828.0100 (o) | 610.828.3873 (f) | www.beaconcre.com

No warranty or representation, expressed or implied, is made as to the accuracy of the information contained herein, and same is submitted subject to errors, omissions, change of price, rental or other conditions, withdrawal without notice, and to any special listing conditions imposed by our principals.