

FOR SALE OR LEASE

MM
MELVIN MARK
EST. 1945



LEASE PRICE REDUCED

221-239 SE MADISON

221-239 SE Madison Street, Portland, Oregon 97214

20,000 SF Two-Story
Industrial Building for Lease or Sale

Call For Sale Pricing

Lease Price Reduced to \$0.50/SF/Month | NNN Lease

Estimated NNN \$0.20/SF/Month

DON DRAKE

503.546.4527

ddrake@melvinmark.com

Licensed in OR

TIM PARKER

503.546.4537

tparker@melvinmark.com

Licensed in OR & WA

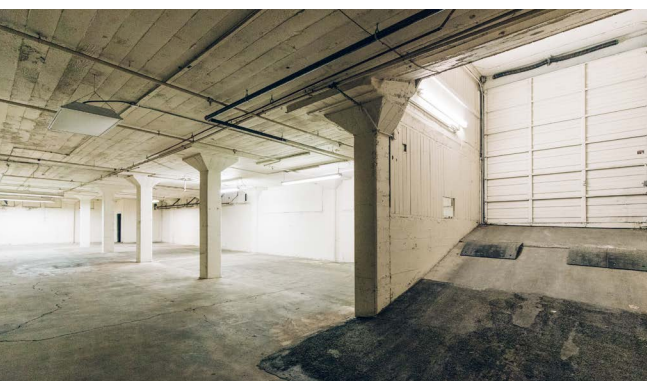
Melvin Mark Brokerage Co.

111 Southwest Columbia

Portland, Oregon 97201

P: 503.223.9203 | melvinmark.com

221-239 SE MADISON SALE OR LEASE



BUILDING HIGHLIGHTS

- Two-story industrial building for lease or sale
 - Full building lease only
- 875 SF Office, total building 20,000 SF
- Prime SE Portland location
- Ideal for local small warehousing & distribution needs and dry & vehicle storage
- Freight elevator with 2,000 pound capacity
- 1 grade ramp accessing basement level
- 11 1/2' clear height main level & 10' clear height basement
- Fully sprinklered



CENTRAL
LOCATION



BIKE
ACCESSIBILITY



COFFEE
SHOP(S)
NEARBY

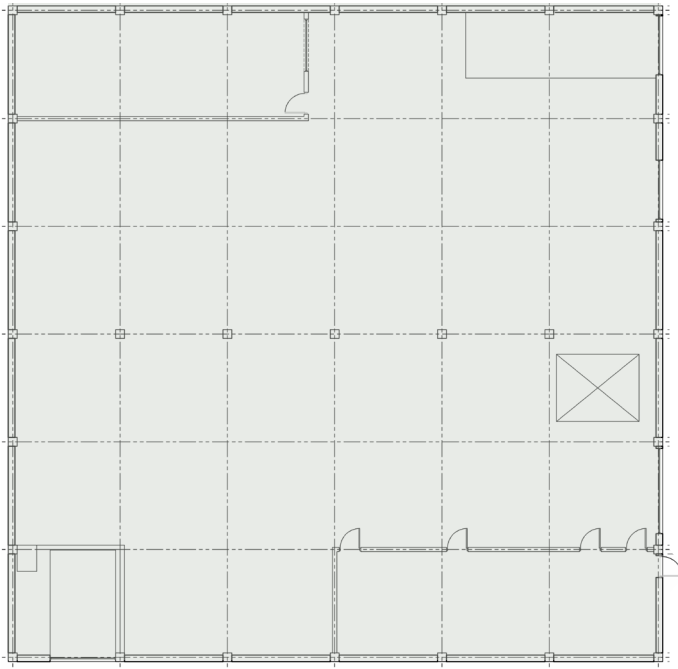


DINING
NEARBY

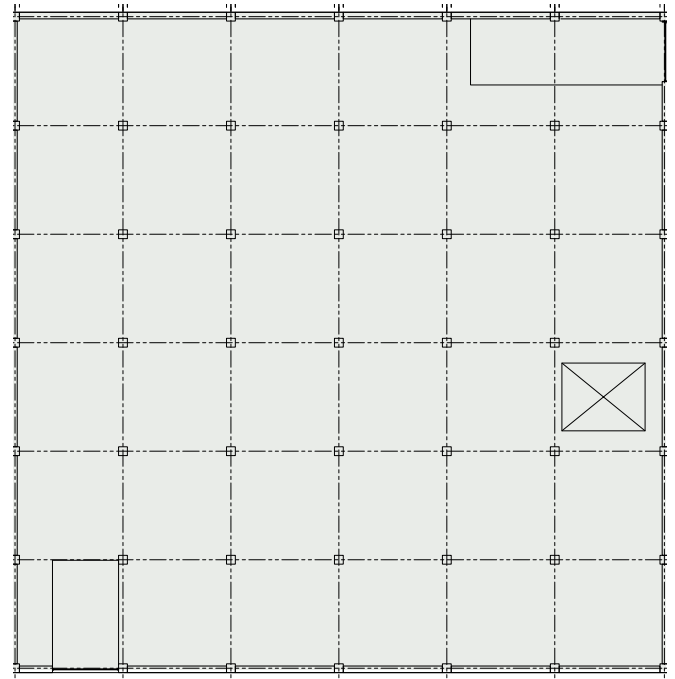


221-239 SE MADISON FLOORPLANS

FIRST FLOOR



BASEMENT



INDUSTRIAL SPACE 20,000 SF (approx.)

875 SF Office

\$0.50/SF/Month | NNN Lease

Estimated NNN \$0.20/SF/Month

Call For Sale Pricing

DON DRAKE
503.546.4527
ddrake@melvinmark.com
Licensed in OR

TIM PARKER
503.546.4537
tparker@melvinmark.com
Licensed in OR & WA



221-239 SE MADISON LOCATION



LOCATION HIGHLIGHTS

- Located within a lively dining and retail district
- Signage visibility from Hawthorne Bridge
- Close proximity to I-5 and Hwy 84
- Prime Southeast location, central and convenient to downtown Portland
- Near TriMet bus route and bike routes



98

BIKE SCORE

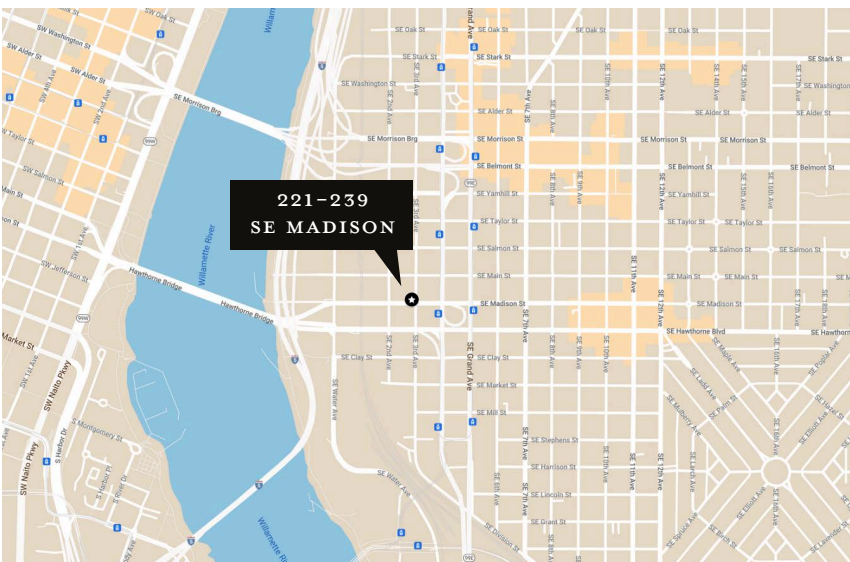
"Biker's Paradise"



81

TRANSIT SCORE

"Excellent Transit"



NEARBY AMENITIES

Wu-Rons Ramen
Nossa Familia
OMSI
Coava Coffee
Jeju Restaurant
Boke Bowl
Eastbank Esplanade
Shalom Y'all
Smith Tea
Clark Lewis
Cargo
Urbanite
River City Bicycles
Afuri Izakaya SE
Olympia Provisions
Next Adventure





MELVIN MARK

EST. 1945

FOR LEASE OR SALE
221-239 SE MADISON

221-239 SE Madison Street | Portland, OR 97214

DON DRAKE

O. 503.546.4527

C. 503.789.8688

ddrake@melvinmark.com

Licensed in OR

TIM PARKER

O. 503.546.4537

C. 503.803.6068

tparker@melvinmark.com

Licensed in OR & WA

The information contained herein has been obtained from sources we deem reliable.

We do not, however guarantee its accuracy. All information should be independently verified prior to purchase or lease.