

1667 CROFTON CENTER
CROFTON, MD 21114

Proposed Direct
Exterior Door
Suite 1

LEASE/SUBLEASE

Office/Medical Building **On MD RT-3** Part Of Crofton Shopping Center

- Two spaces available:
 - **Suite 1:** ± 1,880 sqft (Ready for custom build-out)
 - **Suite 4:** ± 1,200 sqft
- Signage available - Ample parking
- Zoned C3 (General Commercial District)
- Prime Crofton location - Great visibility
- **Lease Rate: contact agent**



LISA POREMSKI
Commercial Salesperson

410-881-3355
lporemski@friendre.com



Main: 410-449-1144 · Fax: 410-983-3956 · friendre.com
8436 Veterans Hwy, Millersville, MD 21108

All information is from sources deemed reliable; However, we are not responsible for errors, omissions, misinterpretation, or misuse of information presented; We make no warranty of any kind, express or implied, with respect to the property or any other matters; Information and the property is subject to change, corrections, prior sales, or withdrawal.

1667 CROFTON CENTER
CROFTON, MD 21114

- Target
- Wegmans
- Starbucks
- Crumble Cookies
- Bonfish Grill
- Panera Bread
- DICK'S Sporting Goods


- Namaste Fine Indian Cuisine
- Kodo Hibachi Sushi Lounge
- Blue Dolphin Seafood Bar & Grill
- ALDI

- Safeway
- TJ Maxx
- Kung Fu Tea
- Chick-fil-A
- Walgreens
- LA Fitness
- Marshalls
- Chipotle Mexican Grill

- Otani Japanese Cuisine
- Krispy Kreme
- Chick-fil-A
- CVS
- Bank of America

- Gold's Gym
- Giant
- At Home
- Checkers
- La Tolteca
- Wells Fargo Bank
- Jimmy John's
- Ace Hardware

- Crofton Middle School
- Crofton High School
(New - over capacity)

 140,448



LISA POREMSKI
Commercial Salesperson

410-881-3355
lporemski@friendre.com

Demographics

1 mile

3 miles

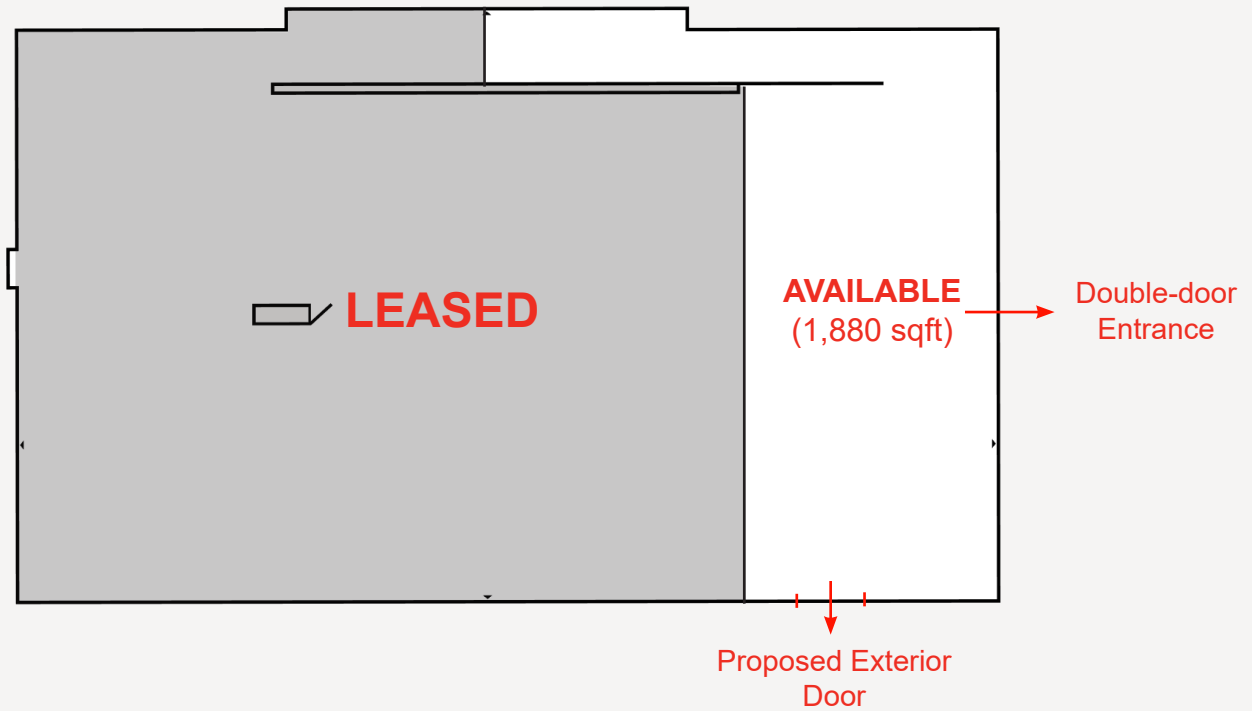
Population	8,164	45,903
Households	3,354	17,147
Median Age	39.80	39.50
Median HH Income	\$118,389	\$130,104
Daytime Employees	4,038	14,969
Population Growth '24 - '29	0.85%	2.17%
Household Growth '24 - '29	0.98%	2.24%

Main: 410-449-1144 · Fax: 410-983-3956 · friendre.com

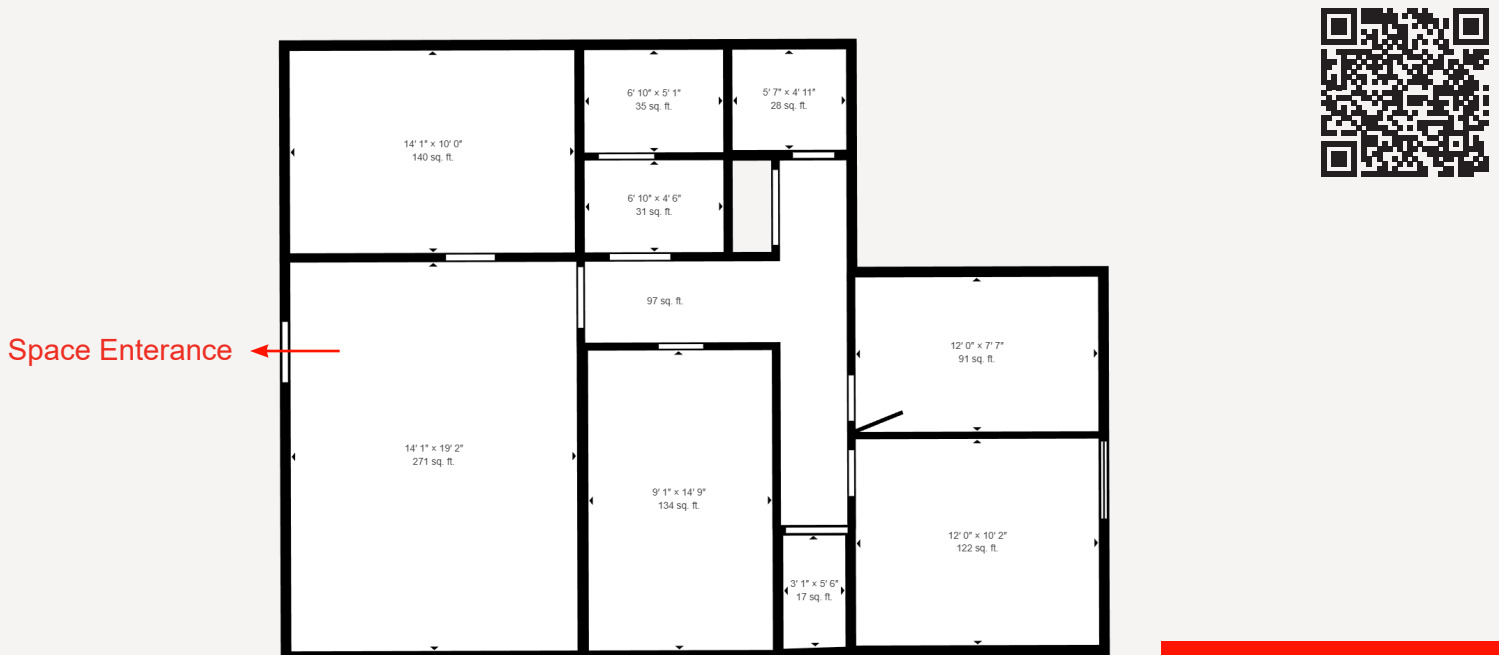
8436 Veterans Hwy, Millersville, MD 21108

All information is from sources deemed reliable; However, we are not responsible for errors, omissions, misinterpretation, or misuse of information presented; We make no warranty of any kind, express or implied, with respect to the property or any other matters; Information and the property is subject to change, corrections, prior sales, or withdrawal.

FLOOR PLANS



SUITE 1



SUITE 4

Main: 410-449-1144 · Fax: 410-983-3956 · friendre.com

8436 Veterans Hwy, Millersville, MD 21108

All information is from sources deemed reliable; However, we are not responsible for errors, omissions, misinterpretation, or misuse of information presented; We make no warranty of any kind, express or implied, with respect to the property or any other matters; Information and the property is subject to change, corrections, prior sales, or withdrawal.