



3 outparcels
 Drive-thru development opportunities
 6550 Hampton Roads Parkway
 Harborview, North Suffolk, Virginia 23435
 JCF 757-623-1062 ext. 213 (tel)
 Attn: Lawrence / LAKEBARB4@aol.com





PARCEL 2
284564 SQ.FT.
6.533 AC.

PARCEL 1
26450 SQ.FT.
4.739 AC.

RETAIL SHOP
RETAIL SHOP

CENTERLINE OF
15' PRIVATE
DRAINAGE
EASEMENT

DRAINAGE AND
IMPOUNDMENT
EASEMENT

15' VIRGINIA POWER
EASEMENT
D.B. 366, PG. 536
(HATCHED AREA)

RESPASS BEACH ROAD (VARIABLE WIDTH R/W)
VIRGINIA ROUTE 623

ACCESS, UTILITY AND
DRAINAGE EASEMENT

CENTERLINE OF
15' PRIVATE
DRAINAGE
EASEMENT

CENTERLINE OF
15' PRIVATE
DRAINAGE
EASEMENT

CENTERLINE OF
10' PRIVATE
UTILITY EASEMENT

CENTERLINE OF
25' PRIVATE
UTILITY EASEMENT

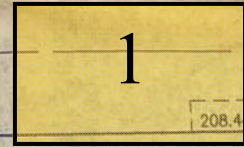
CENTERLINE OF
15' PRIVATE
DRAINAGE
EASEMENT

OUTPARCEL 2
36043 SQ.FT.
0.827 AC.

OUTPARCEL 1
52459 SQ.FT.
1.204 AC.

APPROXIMATE
LOCATION OF
VIRGINIA POWER
EASEMENT
D.B. 366, PG. 541

40' BUILDING SETBACK



HAMPTON ROADS PARKWAY - STATE ROUTE 658
(VARIABLE WIDTH R/W)
(SPECIAL CORRIDOR OVERLAY DISTRICT)



Marketplace



HOGGARD-EURE ASSOCIATES, P.C.
 Engineers Surveyors Planners
 301 ParCentre Parkway, Suite 3
 Portsmouth, Virginia 23702
 Phone: (813) 484-3470

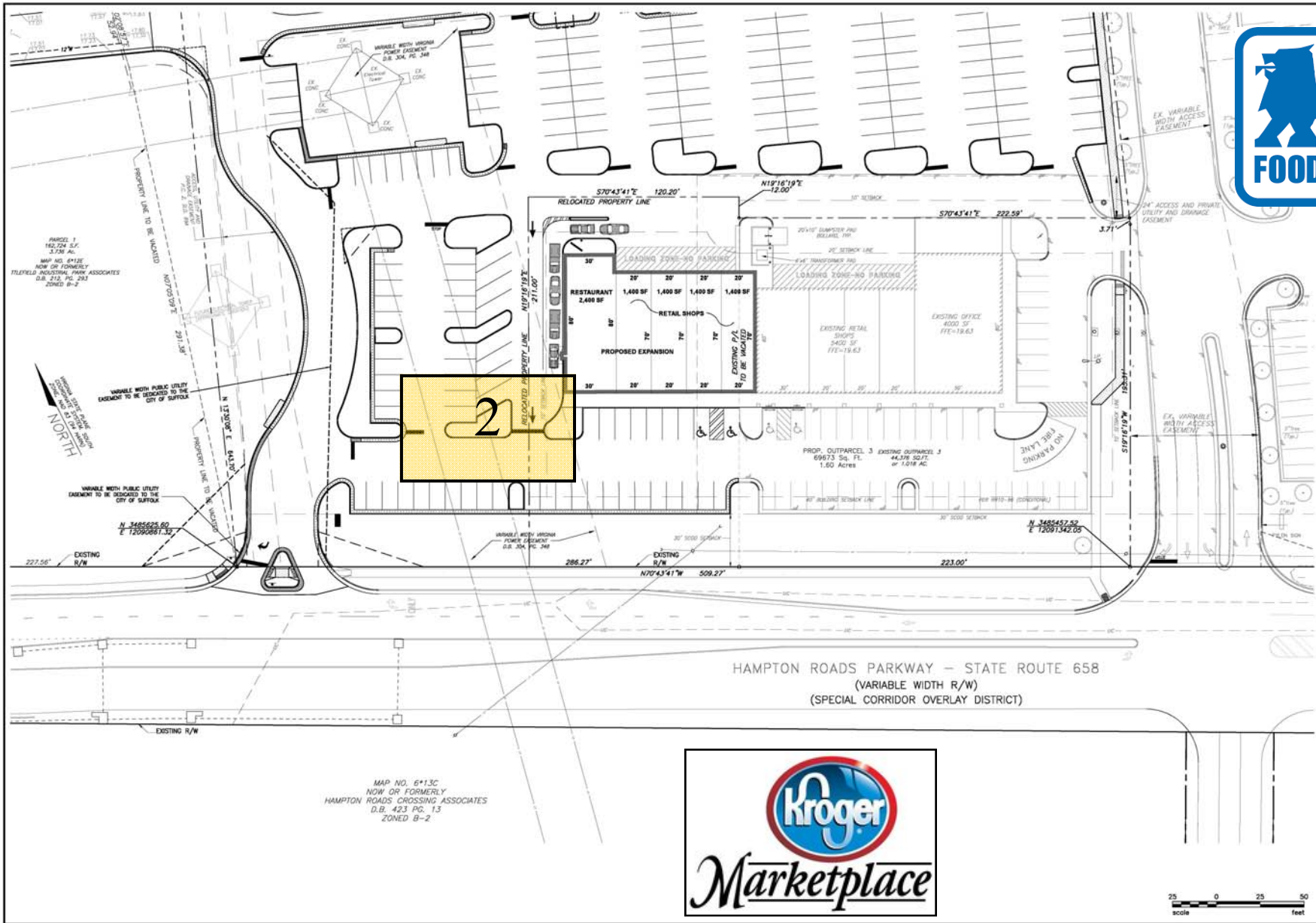
APPROVAL DATE:

CONCEPT PLAN "A"
 FOR RETAIL SHOP EXPANSION
MARKETCENTER AT HARBOR VIEW
 SUFFOLK, VIRGINIA
 TAX MAP NO. 8*13A*3 & 8*13A*3A

DATE: 10/21/2019
 SCALE: 1"=25'
 ENGR.: CLS
 DESIGN: GDC
 DRAWN: GDC

SHEET NO.
 1 OF 1

CAD FILE: CONCEPT PLAN
 10-21-2019.DWG
 DWG No: 1346.07





NO BUILD AREA
Space Remains Green
Pylon Sign can be close to stop light

BURBAGE DRIVE

PARCEL 7A

BURBAGE DRIVE

WAWA SIGN LOCATION



PARCEL 1A

RETAIL SHOPS

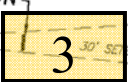
MATTRESS FIRM

PARCEL 2A

PARCEL 1A

VIRGINIA POWER EASEMENT
D.B. 279, PG. 678

SIGN LOCATION



RIGHT-OF-WAY

TO I-664

COLLEGE DRIVE

VIRGINIA STATE PLANE
COORDINATE SYSTEM
SOUTH
NORTH



HAMPTON ROADS PARKWAY

0 100 200
feet