



For Lease

480 22nd Street,
Heyburn, ID

Tami Walker
208 420 4601
tami.walker@colliers.com

Property Overview

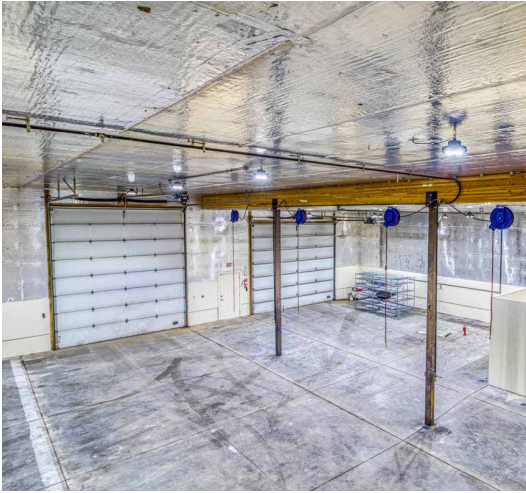
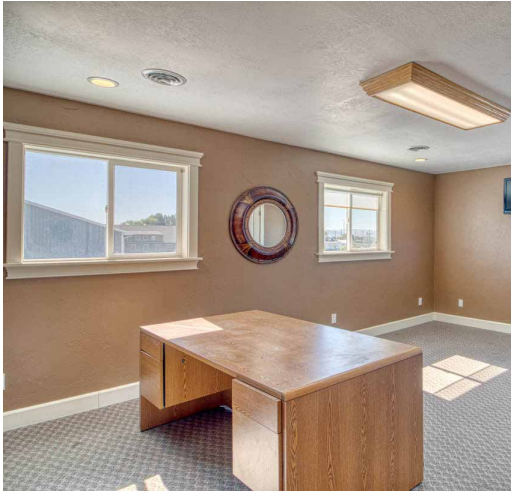
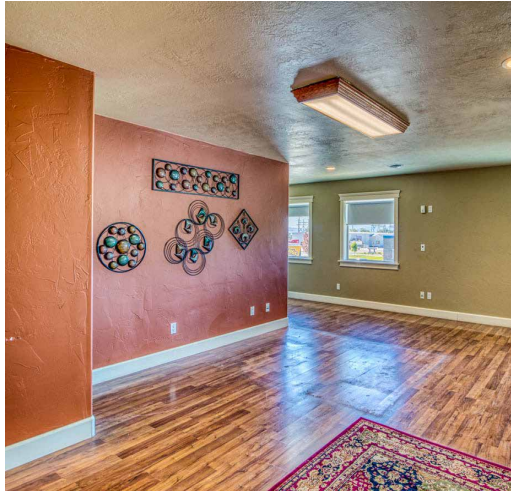
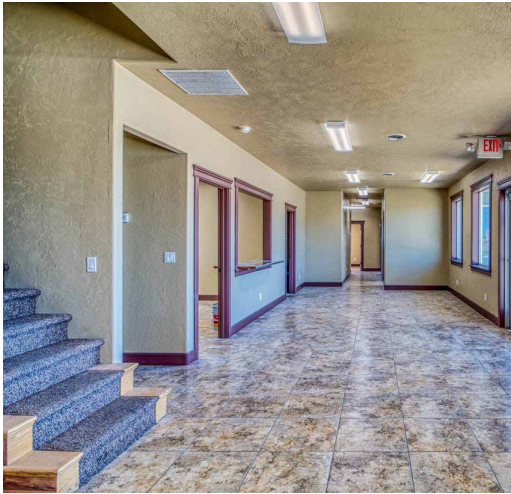
Property Type	Office and Industrial
Building Size	Warehouse - 6,000 SF Office - 5,600 SF
Construction Type	Metal and Frame
Land Size	3 acres (approx)
Zoning	C-1
Yard	1 1/2 acres (approx)
Ceiling Height	16 Foot in shop
Dock High Doors	2 12' Doors, 2 14' Doors
Grade Level Drive- in Doors	4
Parking	21 spaces plus Gravel Lot
Lighting	LED in Shop
Heating & Cooling	Gas Forced Air

Key Highlights

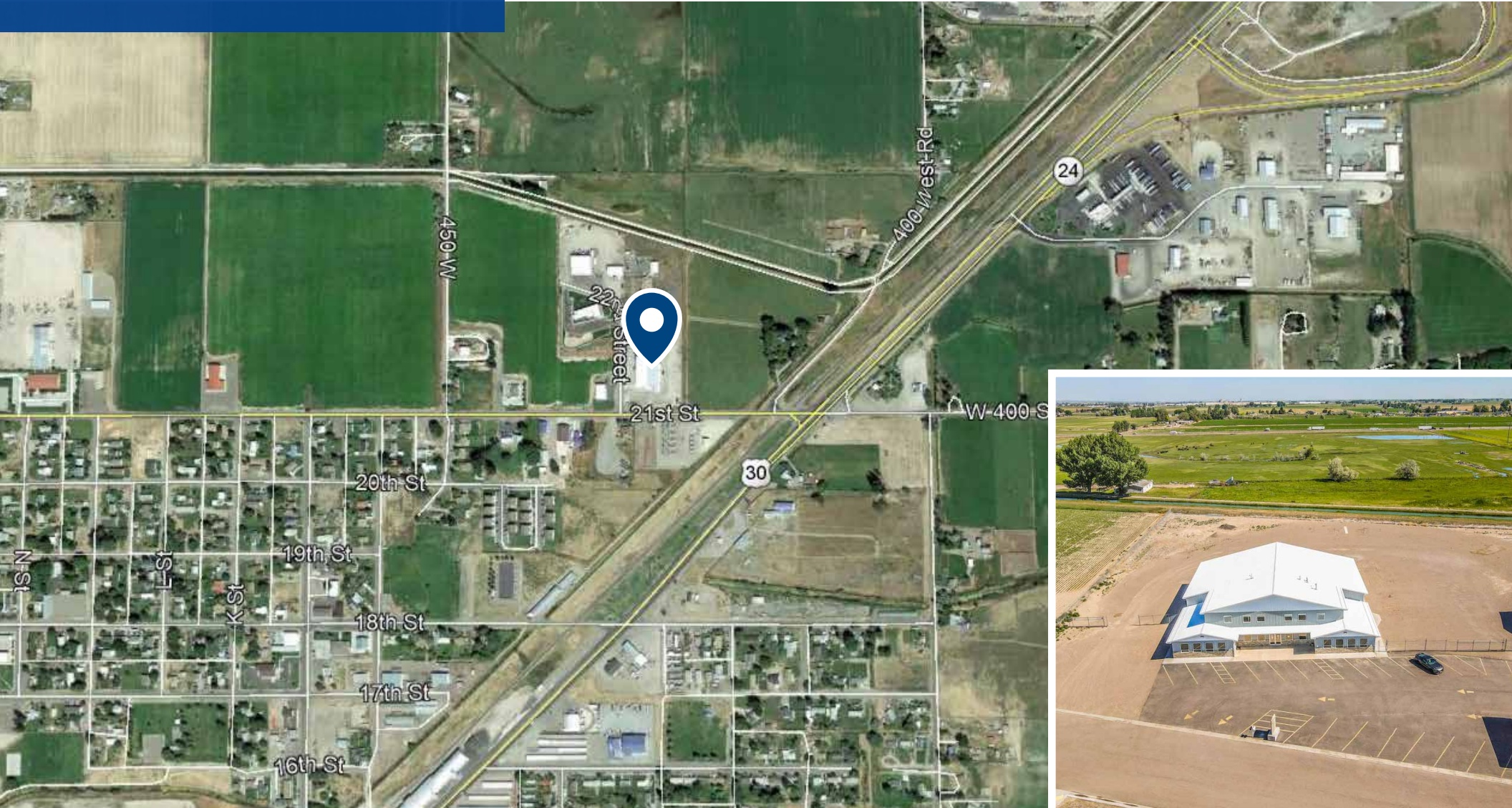
- Property consists of 3 offices upstairs, 2 bathrooms, kitchen and storage.
- Main Level - Conference room, 2 bathrooms, reception area, 5 offices, kitchen and storage
- Fully fenced yard with easy access to I-84, plumbed air for compressor

Lease Rate **\$0.65/SF NNN**

Property Photos



Location



205 Shoshone Street N, Suite 201
Twin Falls, Idaho 83301
208 910 2006
colliers.com/idaho

This document has been prepared by Colliers for advertising and general information only. Colliers makes no guarantees, representations or warranties of any kind, expressed or implied, regarding the information including, but not limited to, warranties of content, accuracy and reliability. Any interested party should undertake their own inquiries as to the accuracy of the information. Colliers excludes unequivocally all inferred or implied terms, conditions and warranties arising out of this document and excludes all liability for loss and damages arising there from. This publication is the copyrighted property of Colliers and /or its licensor(s). © 2023. All rights reserved. This communication is not intended to cause or induce breach of an existing listing agreement. Colliers Magic Valley, LLC.