

2-STORY OFFICE CONDOMINIUM FOR LEASE

SCOTTSDALE AIRPARK SUBMARKET | MCDOWELL MOUNTAIN BUSINESS PARK

±1,478 SF



16410 N 91ST STREET | SUITE 108 | SCOTTSDALE, ARIZONA 85260

TO SCHEDULE A TOUR OR FOR MORE INFORMATION PLEASE CONTACT:



Randy Shell
Designated Broker
C 480.694.4100
randy@shellcommercial.com



Amanda Wright
Senior Associate
C 480.236.0037
amanda@shellcommercial.com

Office Phone:
480.443.3992
shellcommercial.com



SHELL
Commercial Investment Real Estate

16410 N 91st St | Suite 112
Scottsdale, AZ 85260

**BASE RENT
INCLUDES ELECTRIC**

SIZE: ±1,478 sf two-story contemporary office space

**FIRST FLOOR
FEATURES:**

- Nice front reception area
- Two (2) private offices or one (1) office + one (1) conference room
- Kitchenette/break area
- One (1) restroom
- Polished concrete floors

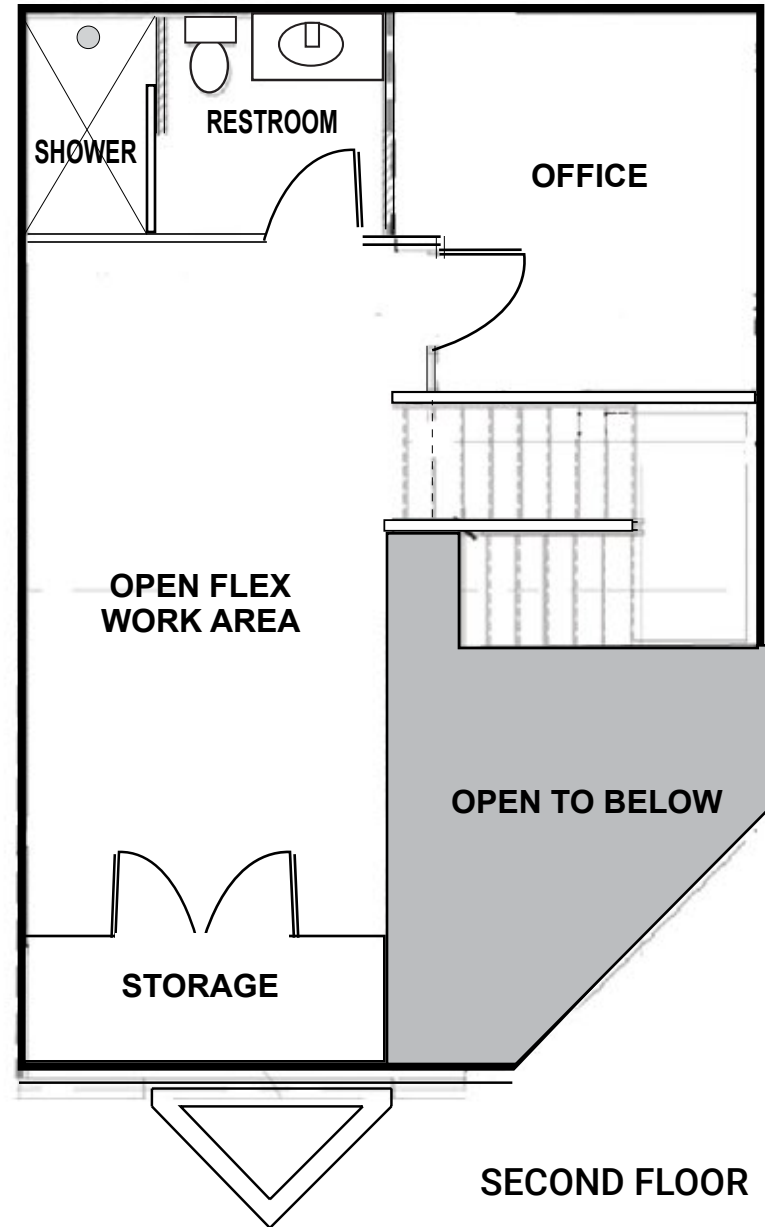
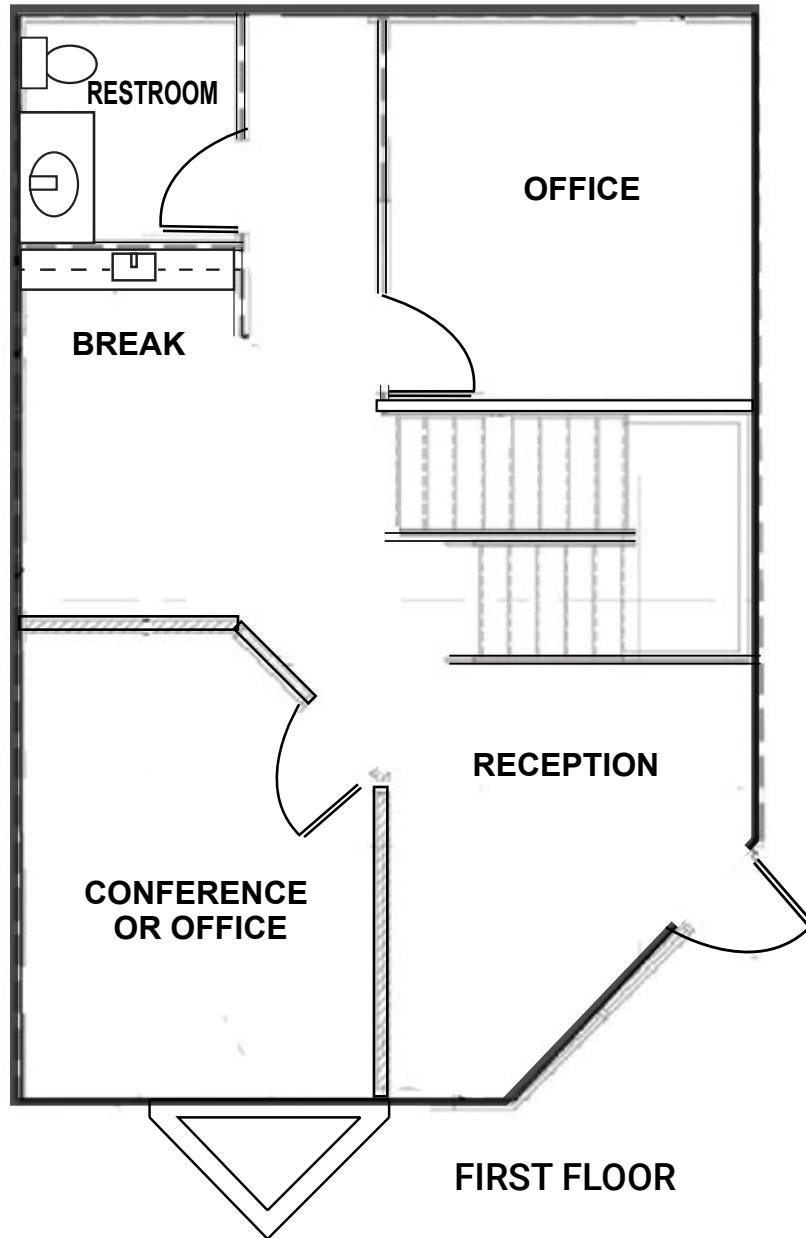
**SECOND FLOOR
FEATURES:**

- One (1) private office
- Large open flex space
- One (1) restroom with glass-enclosed shower
- Storage closet

PARKING: • Four (4) parking spaces included

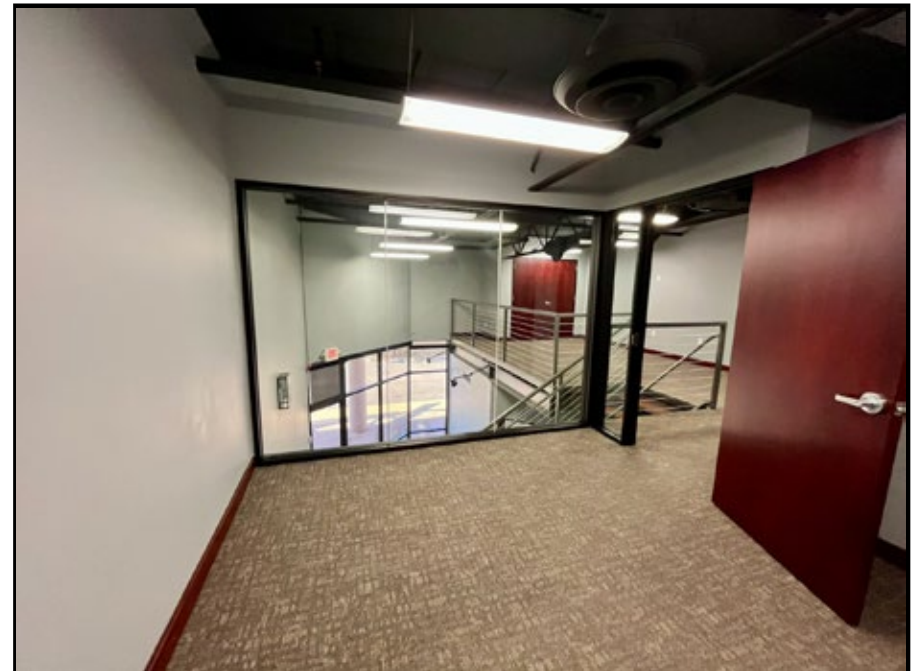
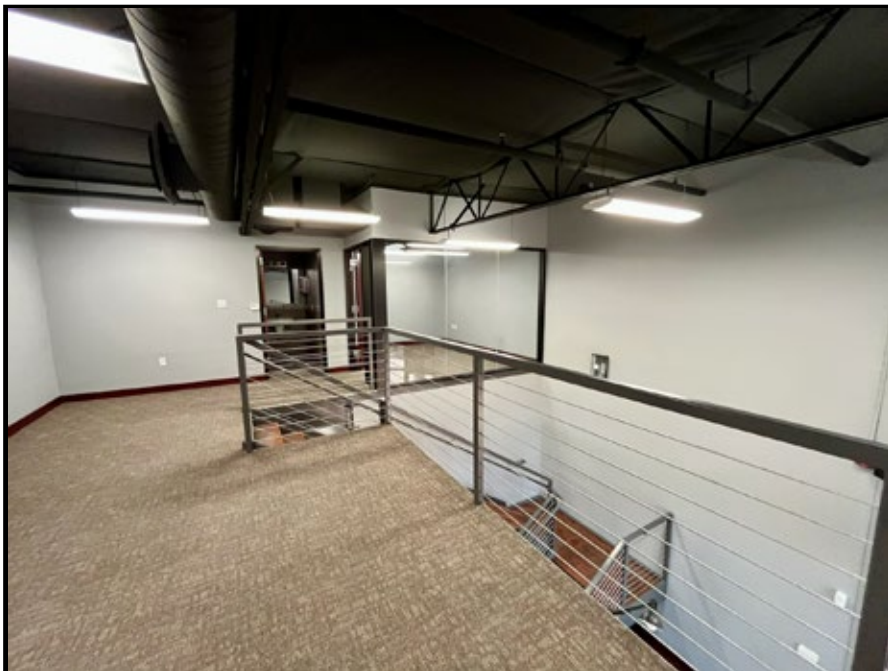
ZONING: • I-1, PCD, Light Industrial, City of Scottsdale





NOT TO SCALE

All information furnished regarding property for sale, rental or financing is from sources deemed reliable, but no warranty or representation is made to the accuracy thereof and same is submitted to errors, omissions, change of price, rental or other conditions, prior to sale, lease or financing or withdrawal without notice. No liability of any kind is to be imposed on the broker herein. This information has been secured from sources deemed reliable, however, we make no warranties as to its accuracy.



16410 N 91ST STREET | SUITE 108 | SCOTTSDALE, ARIZONA 85260

MAP LOCATION

