



# the GLEN CENTRE

JOIN BEL AIR'S VERY OWN COUNTRY MARKET

2920 - 2964 **beverly glen circle** | los angeles, california

Beverly Glen Circle

Beverly Glen Boulevard

# the GLEN CENTRE

century city

Join The Glen Centre, an irreplaceable trophy daily needs retail center nestled in the hills of Bel Air, high above Los Angeles.

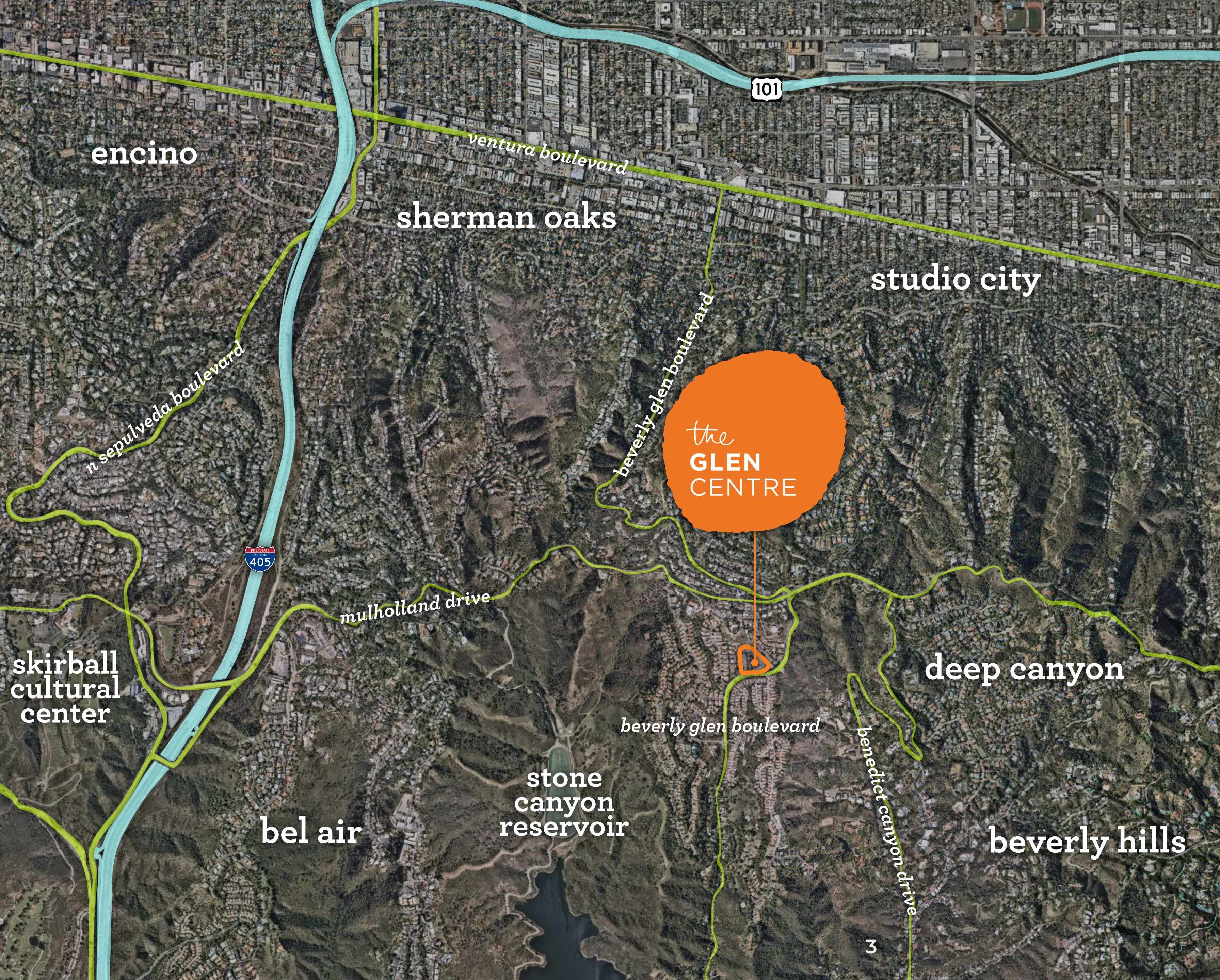
Jam packed on a daily basis with customers boasting discretionary spending habits to dream of (with AHFI of over \$200,000 within a 1 mile radius), average unit volumes for retailers and restaurants at the Centre are beyond enviable.

While there is certainly a captive Bel Air audience that contributes to the nearly 1,000,000 annual visits to the Centre, Placer data also indicates that 70% of visits originate more or less equally from Beverly Hills and Westwood in the LA basin as they do from Sherman Oaks and Studio City in the valley.

The charming neighborhood vibe of this uniquely situated property, well away from the hustle and bustle of the city streets below, means that consumers from both sides of the hill routinely go out of their way to visit us.

We look forward to hosting your business at The Glen Centre.





## NEARBY DRIVE TIMES

- bel air ± 5 minutes
- sherman oaks ± 7 minutes
- studio city ± 10 minutes
- beverly hills ± 12 minutes
- westwood ± 12 minutes
- encino ± 15 minutes
- brentwood ± 20 minutes
- santa monica ± 25 minutes

## VISITOR ORIGIN

- beverly hills 17.9%
- bel air 15.6%
- sherman oaks 12.8%
- studio city 6.0%
- encino 5.7%
- westwood 5.2%
- brentwood 5.0%

source: [placer.ai](https://www.placer.ai)





# the **GLEN CENTRE**

---

## **HIGHLIGHTS**

**GORGEOUS & CHIC SELECTION OF BOUTIQUES AND LOCAL SHOPS, CAFES AND EATERIES NESTLED IN THE SANTA MONICA MOUNTAINS**

nearly 1,000,000 visits annually

**ONLY RETAIL LOCATED IN BEL AIR**

no competing retail serving the neighborhood

**HEAVY DAILY TRAFFIC ON BEVERLY GLEN BOULEVARD**

with approximately 50,000 vehicles per day at the intersection of Beverly Glen Boulevard and Mulholland Drive

**AVERAGE VISITOR STAY AT THE CENTRE IS OVER 1 HOUR, WITH VISITORS REGULARLY SHOPPING AT MULTIPLE STORES**

compare with average stays at:  
Montecito Country Mart (31 minutes)  
Brentwood Country Mart (39 minutes)  
Malibu Country Mart (51 minutes)  
*(source: placer.ai)*

**NEARLY 50,000 HOMES WITHIN 3 MILES**

**AVERAGE HOUSEHOLD INCOME IN EXCESS OF \$200,000**



# the GLEN CENTRE

2920 - 2964 beverly glen circle | los angeles, california

unit	occupancy	size
2920 *	AVAILABLE RETAIL/RESTAURANT + Covered Patio	1,598 SF + 430 SF
2922 - 2924 *	AVAILABLE RESTAURANT + Covered Patio	2,228 SF + 697 SF
2924 1/2	forma pilates	
2926	rori's artisanal ice cream	
2926 1/2	glen center alteration	
2930	vibrato grill jazz	
2932	il segreto	
2932 1/2	shu sushi house	
2934	bluemercury	
2934 1/2	bel air postal center	
2936	bel air nail lounge	
2938	bel air beauty bar	
2940	roam	
2942	AVAILABLE RETAIL	1,205 SF
2944	flicka	
2946 - 2948	beverly glen deli	
2950	market	
2952	starbucks coffee	
2954 - 2956	switch	
2958	wokshop by xi'an	
2960	fabrocini's	
2964	jayde's market	



\* Spaces 2920 - 2924 can be combined for a total of 3,826 SF (interior space) & 1,127 SF (dedicated covered patio).

Sherman Oaks | 7 Minute Drive Time

Studio City | 10 Minute Drive Time

± 50,000 VPD  
Beverly Glen Boulevard & Mulholland Drive

± 1,205 sf  
retail

± 2,228 sf  
restaurant

± 1,596 sf  
retail  
restaurant

JAYDE'S  
CAFE DELI  
L.A.  
C.A.  
WINE SHOP

FABROCINI'S  
BEVERLY GLEN



Beverly Glen Deli

MARKET



FLICKA

BOAM

Bel Air  
Nail Lounge

s h u  
sushi house unico

il Segreto  
RISTORANTE

Vibrato  
GRILL, JAZZ, ETC.

FORMA  
PILATES



bluemercury  
makeup · skincare · spa

Beverly Glen Circle

Beverly Glen Boulevard



**SPACE USE:** 2<sup>ND</sup> GENERATION RESTAURANT & RETAIL ENDCAP

\* SPACES 2920 - 2924 CAN BE COMBINED FOR A TOTAL OF 3,826 SF (INTERIOR) & 1,127 SF (DEDICATED COVERED PATIO)



**2922 - 2924 \***  
2,228 SF  
+ 697 SF Covered Patio

**2920 \***  
1,598 SF  
+ 430 SF Covered Patio

CAN BE COMBINED

2920 - 2922 - 2924 **beverly glen circle | los angeles, california**

**CURRENT** AVAILABILITIES



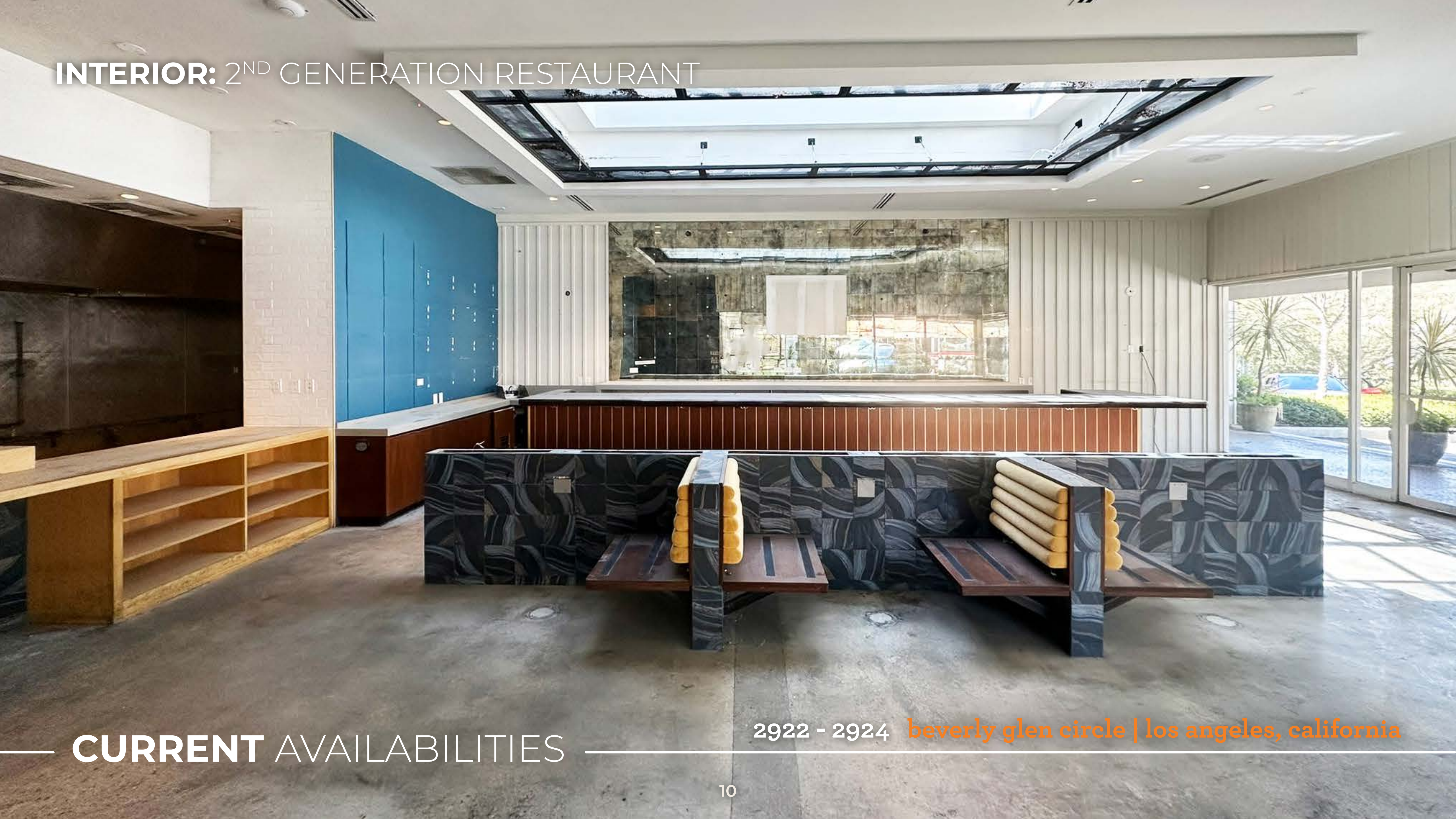
**INTERIOR: 2<sup>ND</sup> GENERATION RESTAURANT**



**CURRENT** AVAILABILITIES

2022 - 2024 **beverly glen circle | los angeles, california**

**INTERIOR: 2<sup>ND</sup> GENERATION RESTAURANT**



**CURRENT** AVAILABILITIES

2022 - 2024 **beverly glen circle | los angeles, california**

**SPACE USE:** PREMIER RETAIL



flicka

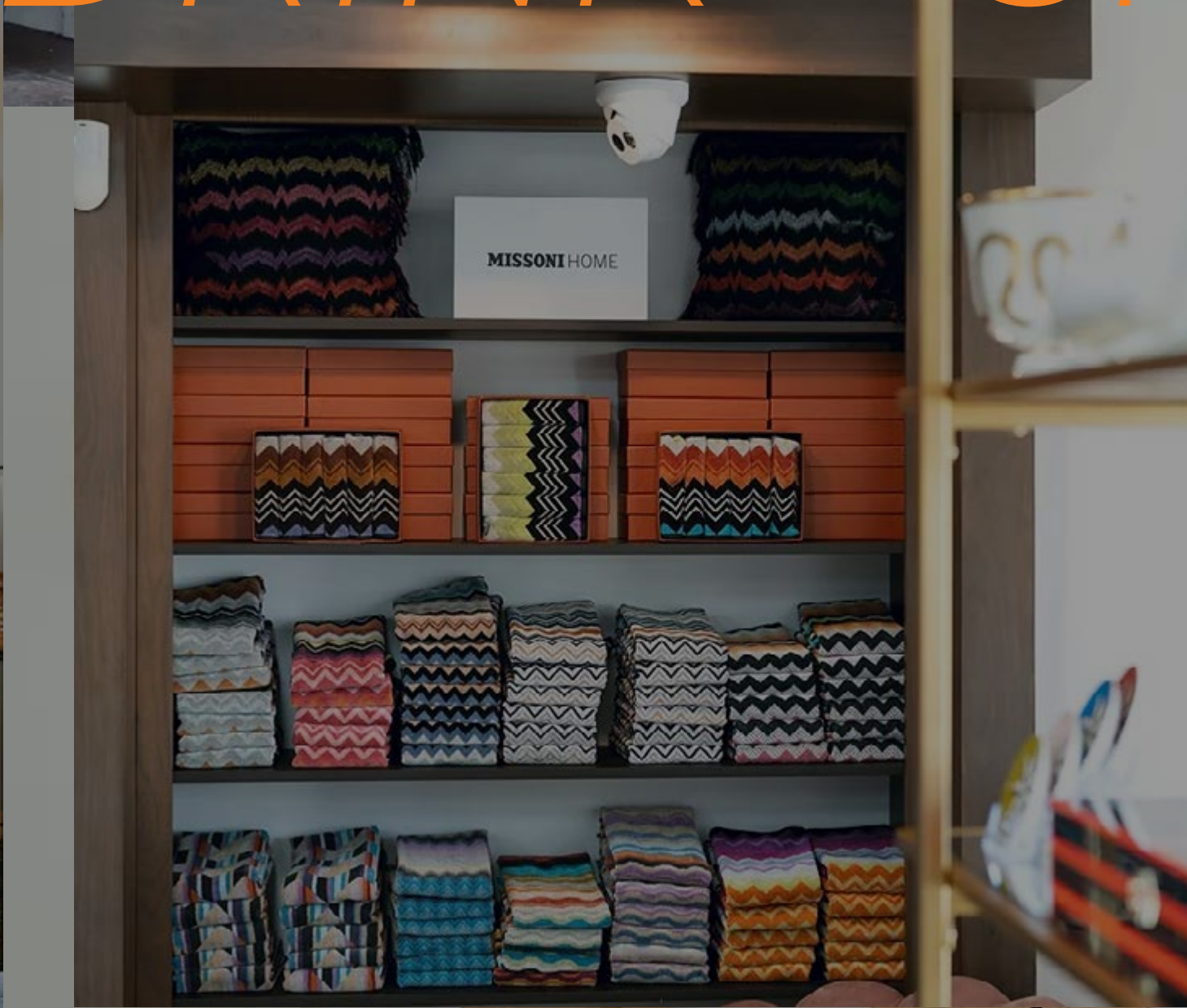
**2942**  
1,205 SF

**CURRENT AVAILABILITIES**

**2942** **beverly glen circle | los angeles, california**



EAT - DRINK - SHOP - ENJOY



EAT



shu sushi house



il segreto



fabrocini's



shu sushi house



13 wokshop by xi'an



beverly glen deli

DRINK



starbucks



jayde's market



il segreto



fabrocini's



14

jayde's market



vibrato grill jazz

# SHOP

## JAYDE'S

Welcome to Jayde's, your independent local market and your most loyal neighbor. We are committed to serving our community with farmer's market freshness. Our shelves are brimming with local, mostly organic, completely delicious products that are ethically produced. If you don't see what you're looking for, please ask about it.

GRAB A BASKET AND ENJOY!



roam



flicka



15

market

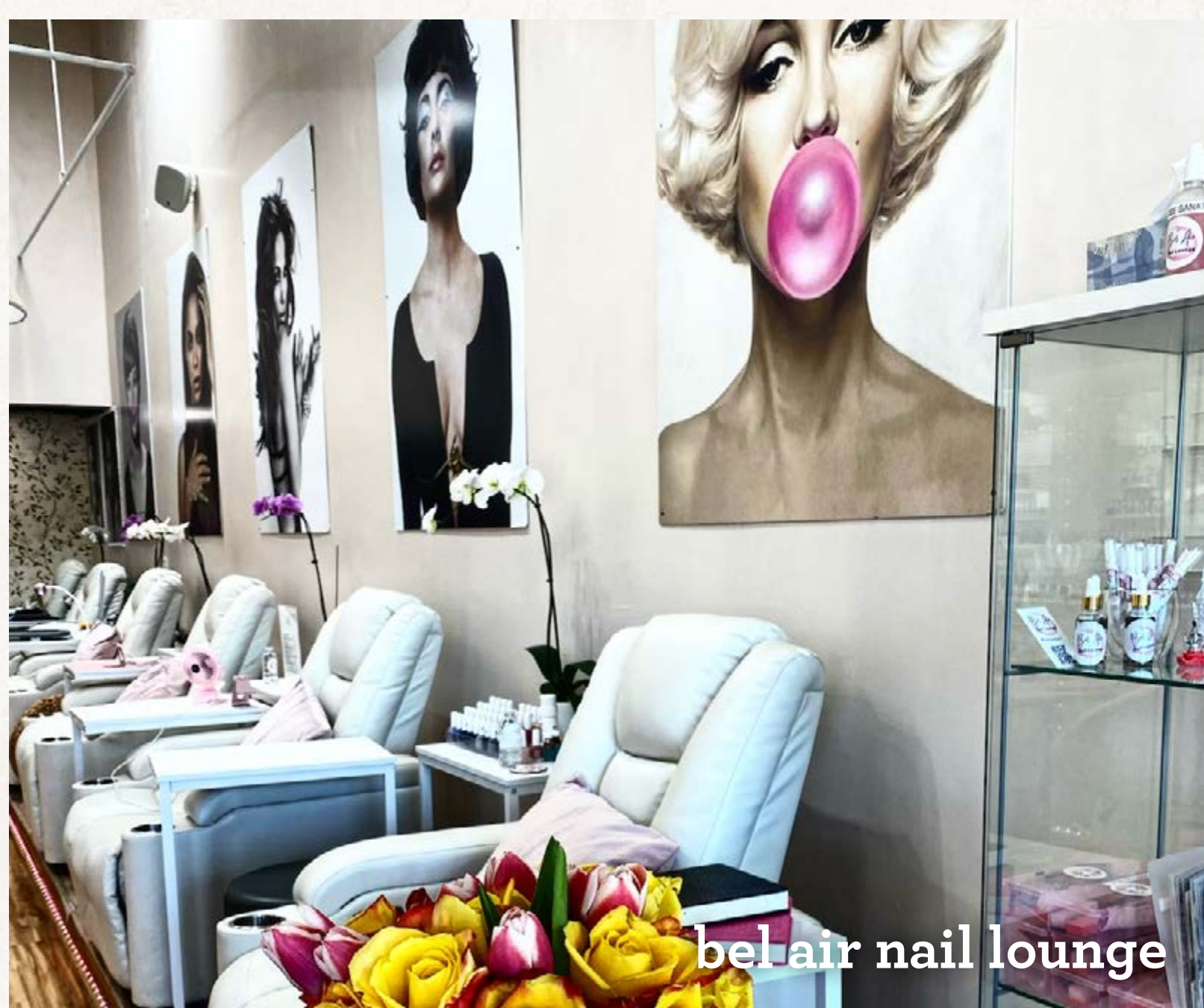


jayde's market

ENJOY



jayde's market



bel air nail lounge



forma pilates



forma pilates



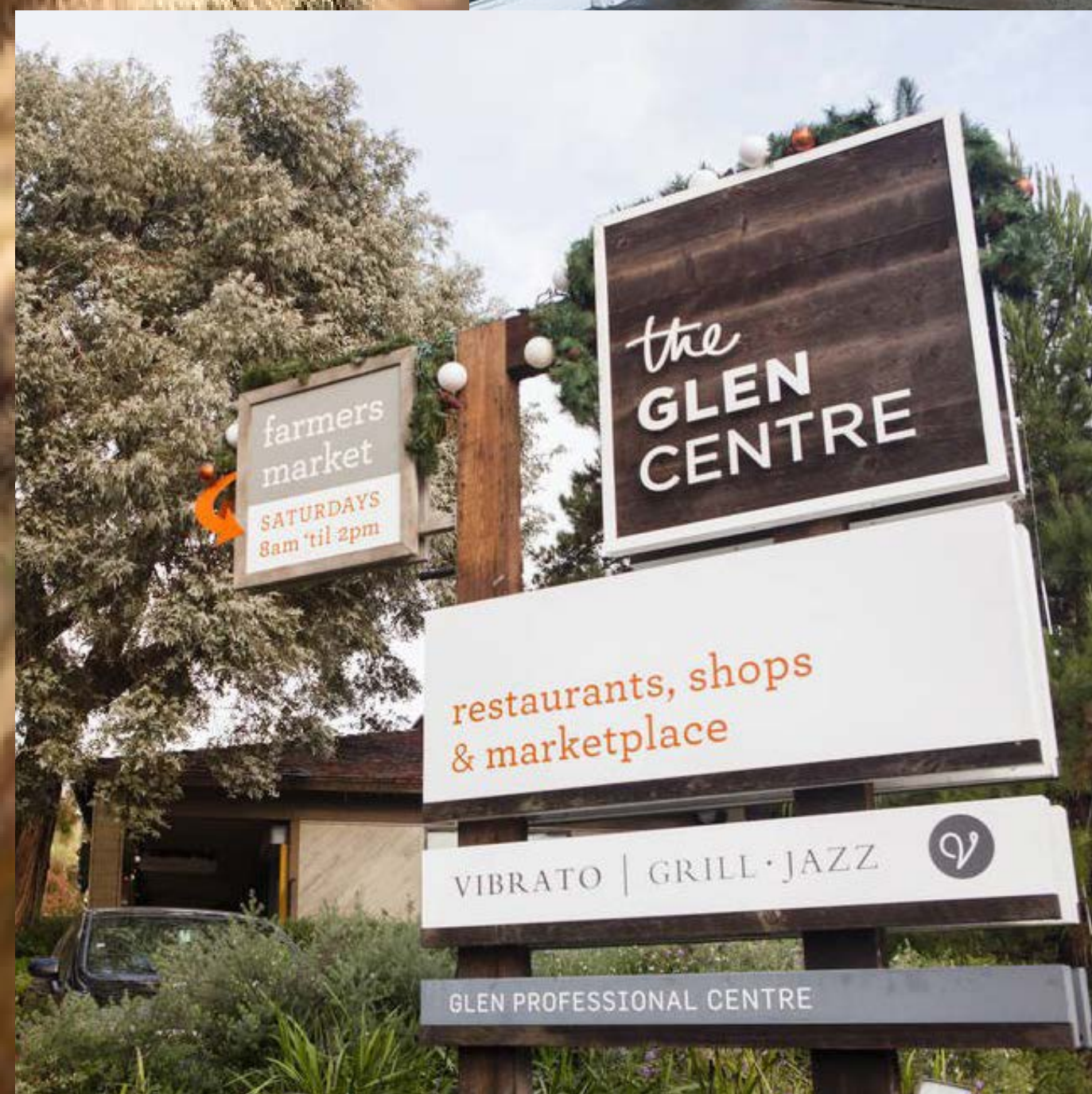
rori's ice cream



vibrato grill jazz



# the GLEN CENTRE



## LEASING TEAM

(424) 363-7800

### Andrew Cohen

*Executive Vice President | Leasing*

acohen@pegasusam.com

(424) 363-7800

LIC# 01996379 (CA)

### Emmet Pierson

*Senior Associate | Leasing*

epierson@pegasusam.com

(424) 363-7800

LIC# 02048600 (CA)

### Matthew May

*Founder*

matthew@mra.la

(818) 477-0817

LIC# 00912472 (CA)



**Pegasus Asset Management Inc.**

1901 Avenue of the Stars, Suite 630

Los Angeles, CA 90067

(310) 691-1350

CA DRE LIC # 02119442

www.pegasusam.com



**May Realty Advisors**

15206 Ventura Blvd, Suite 302

Sherman Oaks, CA 91403

Phone: (818) 528-3999

Toll Free: (888) 805-8188

Fax: (818) 905-7559

#### Confidentiality & Disclaimer Statement

The information contained in this Leasing Package is proprietary and strictly confidential. It is intended to be reviewed only by the party receiving it from Pegasus Asset Management, and May Realty Advisors and should not be made available to any other person or entity without the written consent of Pegasus Asset Management and May Realty Advisors. This Leasing Package has been prepared to provide summary, unverified information to prospective purchasers, and to establish only a preliminary level of interest in the subject property.

The information contained herein is not a substitute for a thorough due diligence investigation. Pegasus Asset Management and May Realty Advisors have not made any investigation, and makes no warranty or representation, with respect to the income or expenses for the subject property, the future projected financial performance of the property, the size and square footage of the property and improvements, the presence or absence of contaminating substances, PCB's or asbestos, the compliance with State and Federal regulations, the physical condition of the improvements thereon, or the financial condition of the business prospects of any tenants, or any tenant's plans or intentions to continue its occupancy of the subject property.

The information contained in this Leasing Package has been obtained from sources we believe to be reliable; however, Pegasus Asset Management and May Realty Advisors have not verified, and will not verify, any of the information contained herein, nor has Pegasus Asset Management or May Realty Advisors conducted any investigation regarding these matters and makes no warranty or representation whatsoever regarding the accuracy or completeness of the information provided. Some or all of the photographs contained within may have been altered from their original format. All potential buyers must take appropriate measures to verify all of the information set forth herein.