



**14,225 SF AVAILABLE FOR LEASE ON FIRST FLOOR**

**600 Eagleview Boulevard**

**EXTON, PA 19341**

#### PROPERTY HIGHLIGHTS

- Conveniently located near numerous local amenities which include:
  - Restaurant Row – Featuring AI fresco dining
  - Fitness center
  - Daycare
  - Walking trails
  - Farmers market
- Parking: 4.80/1,000 SF ratio
- Easy access to Route 113 and Pottstown Pike



*For information, please contact:*

**Jim Dugan**

*Executive Managing Director*

t 610-879-4513

[james.dugan@nmrk.com](mailto:james.dugan@nmrk.com)

**Jeff Mack**

*Executive Managing Director*

t 610-755-6960

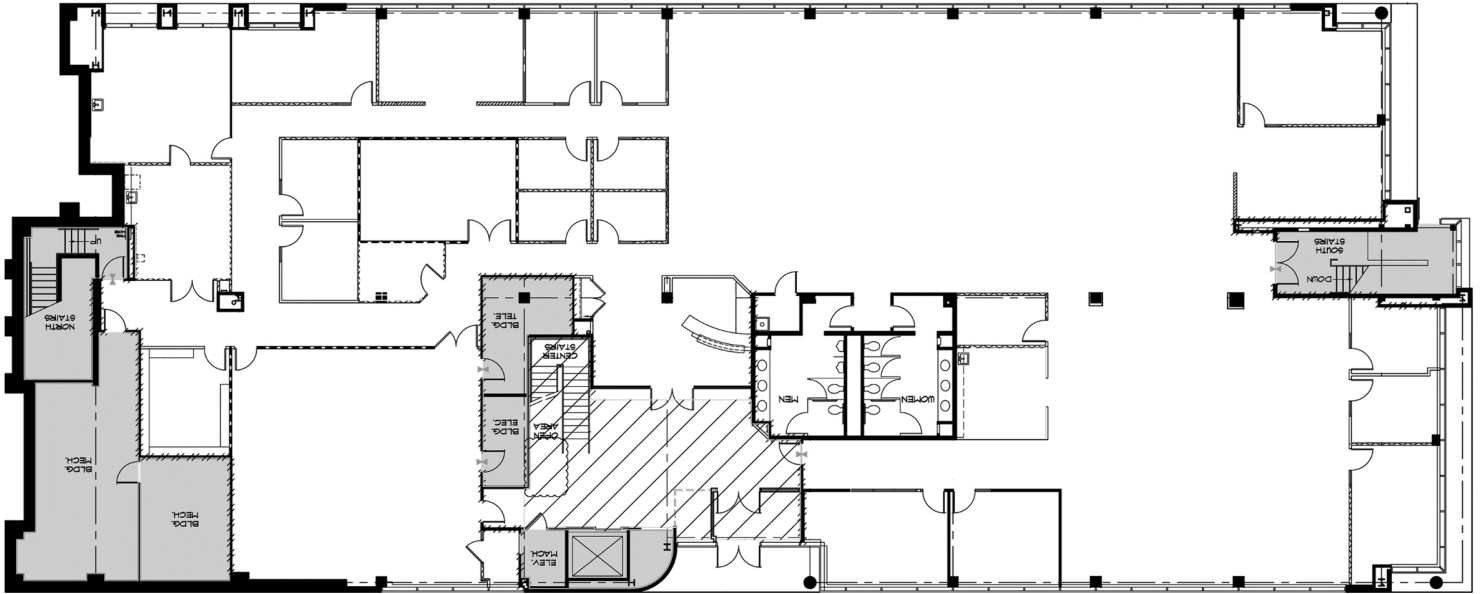
[jeff.mack@nmrk.com](mailto:jeff.mack@nmrk.com)

1000 Continental Drive  
Suite 200  
King of Prussia, PA 19406  
t 610-265-0600

**Licensed in Pennsylvania as  
Newmark Real Estate**

## 600 Eagleview Boulevard

14,225 SF AVAILABLE FOR LEASE ON FIRST FLOOR



FIRST FLOOR AVAILABLE SPACE

## 600 Eagleview Boulevard

14,225 SF AVAILABLE FOR LEASE ON FIRST FLOOR



SUITE ENTRANCE



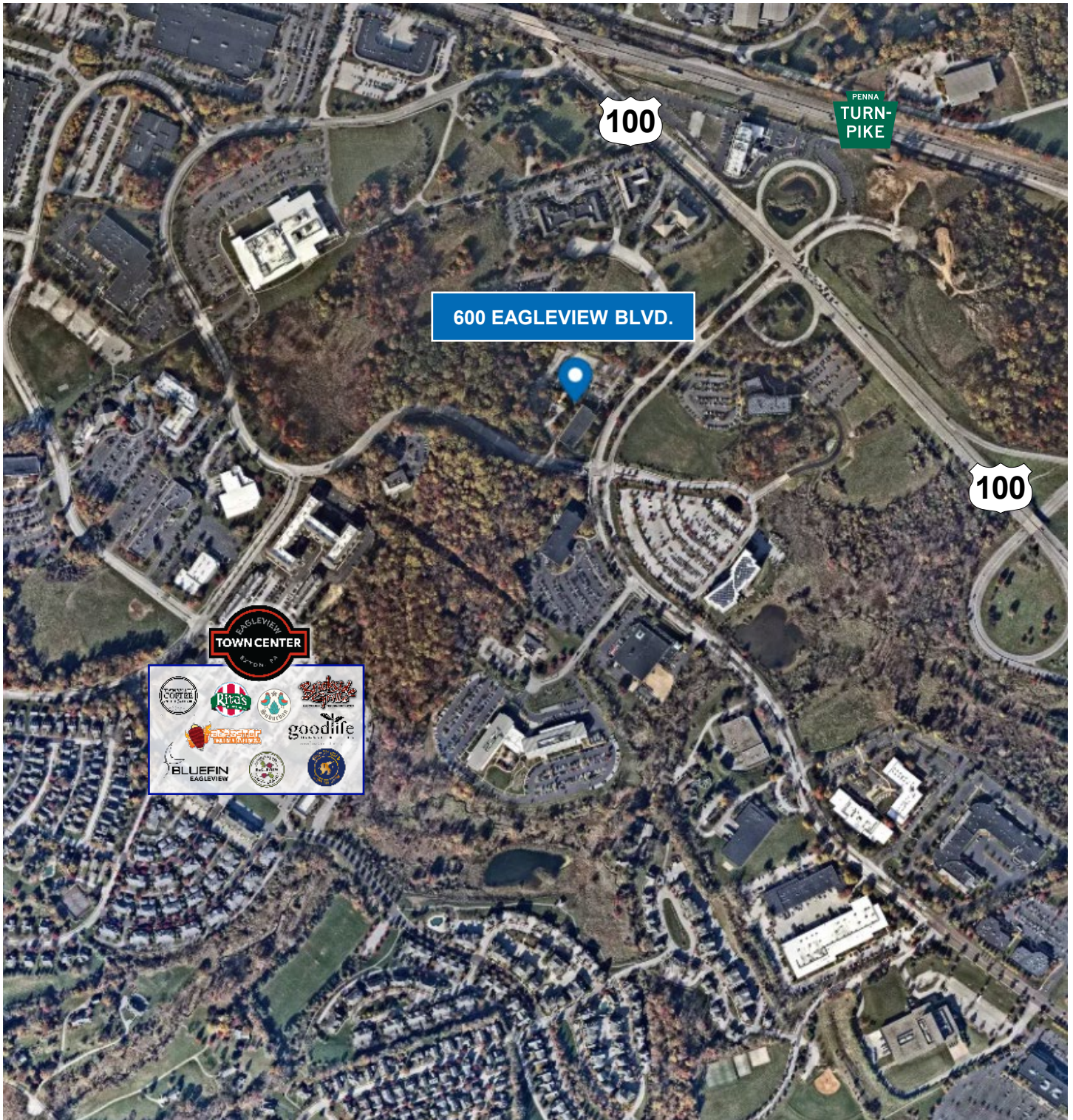
FULLY EQUIPPED BOARD ROOM



ABUNDANT NATURAL LIGHT DUE TO WINDOW LINE

## 600 Eagleview Boulevard

14,225 SF AVAILABLE FOR LEASE ON FIRST FLOOR



CLOSE PROXIMITY TO NUMEROUS AMENITIES AND ROADWAYS