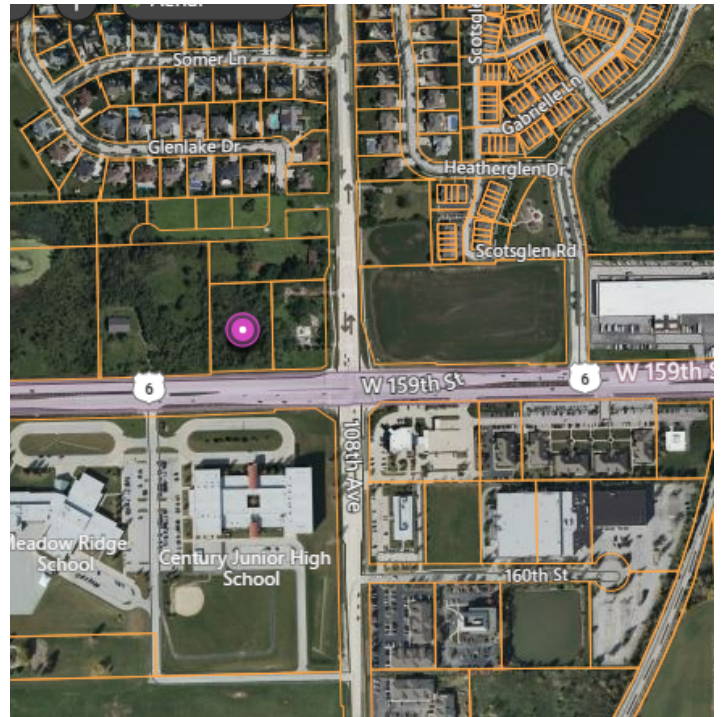
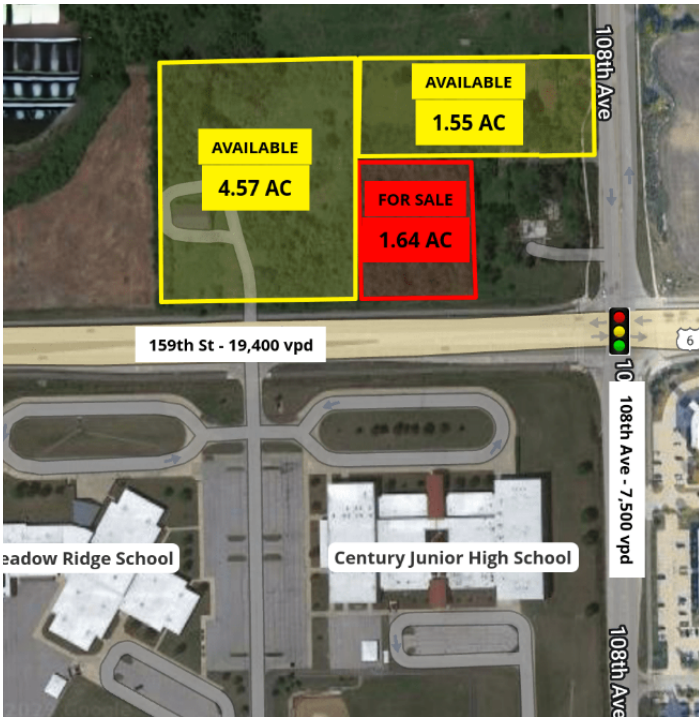


LAND FOR SALE 1.644 ACRES (ASSEMBLAGE POSSIBLE)

10830 West 158th Street Orland Park, IL 60467



PROPERTY HIGHLIGHTS

- 1.644 acres of commercial property on 159th Street Corridor.
- Possible assemblage with surrounding parcels for a total of 7.764 acres.
- Just one parcel west of 159th and 108th Ave at 4-way lighted intersection.
- Great location for commercial development in a highly sought after Orland Park area.
- Property is across the street from Meadow Ridge School and Century Junior High School.

OFFERING SUMMARY

Sale Price:	Contact Broker
Lot Size:	1.644 Acres
APN:	27-17-301-019

DEMOGRAPHICS	1 MILE	3 MILES	5 MILES
Total Households	1,536	21,448	55,085
Total Population	3,846	56,723	145,734
Average HH Income	\$147,390	\$132,427	\$138,695

Sandra True
630 248 7518

Brian Blackmore
630 207 8292



COLDWELL BANKER
COMMERCIAL
REALTY

RETAILER MAP

COMMERCIAL LAND FOR SALE

10830 West 158th Street Orland Park, IL 60467



Sandra True
630 248 7518

Brian Blackmore
630 207 8292



COLDWELL BANKER
COMMERCIAL
REALTY