



# 2110 Executive Hills Ct

AUBURN HILLS, MI

**TOM OLDHAM**

248-357-6595

[tom.oldham@nmrk.com](mailto:tom.oldham@nmrk.com)

**DAN LABES**

248-357-6578

[dan.labes@nmrk.com](mailto:dan.labes@nmrk.com)

- ▶ **80,416** SF Available
- ▶ **27,210** SF Two-Story Office
- ▶ Expandable to **133,000** Square Feet
- ▶ **Completely Renovated** Building Finished to Suit
- ▶ **24'** Clear Height
- ▶ **Three** 12'X14' Grade Level Doors
- ▶ **One** Truckwell, More Possible
- ▶ **5000** Amps, **480** Volts Power
- ▶ Easy Access to **I-75** and **M-59**
- ▶ **For Sale or Lease**

**NEWMARK**

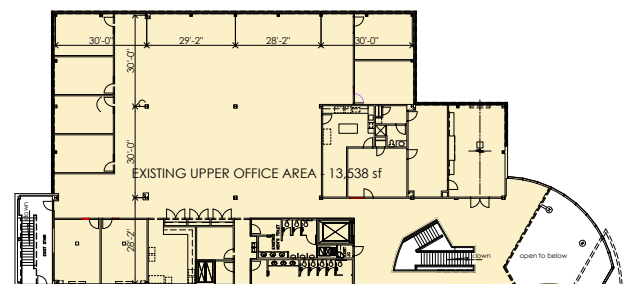
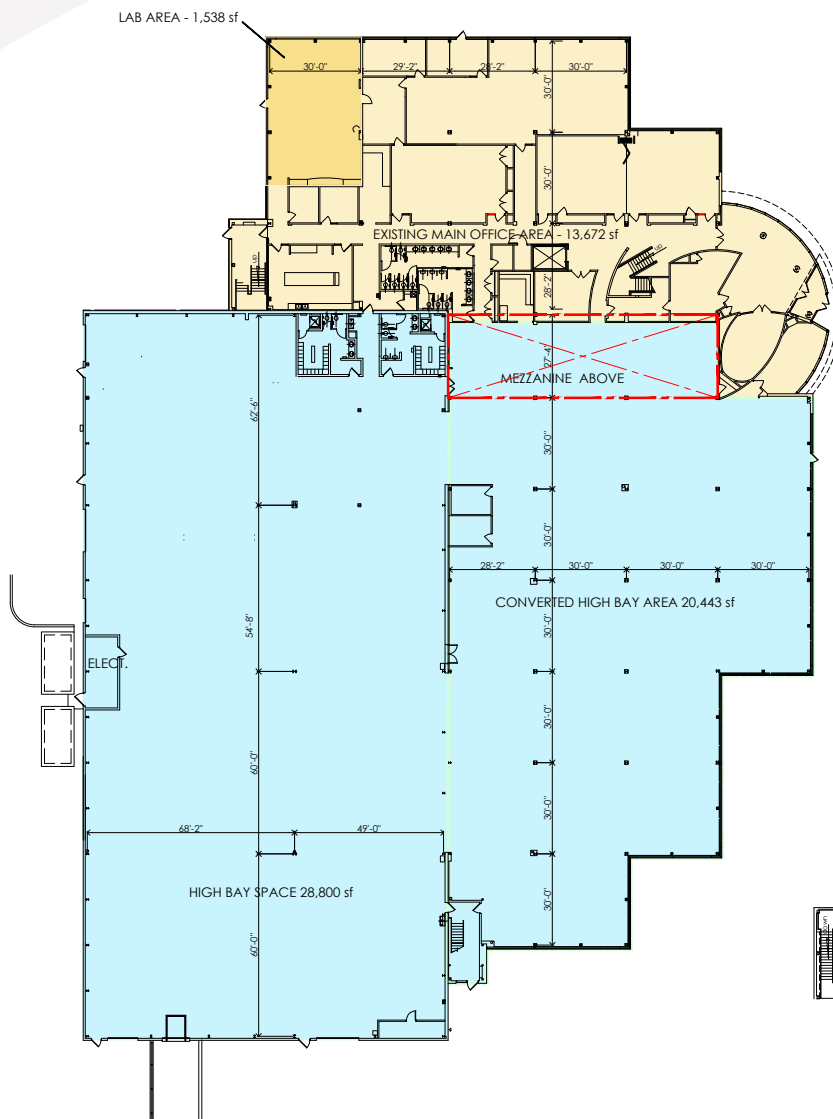
[nmrk.com](http://nmrk.com)

The information contained herein has been obtained from sources deemed reliable but has not been verified and no guarantee, warranty or representation, either express or implied, is made with respect to such information. Terms of sale or lease and availability are subject to change or withdrawal without notice.





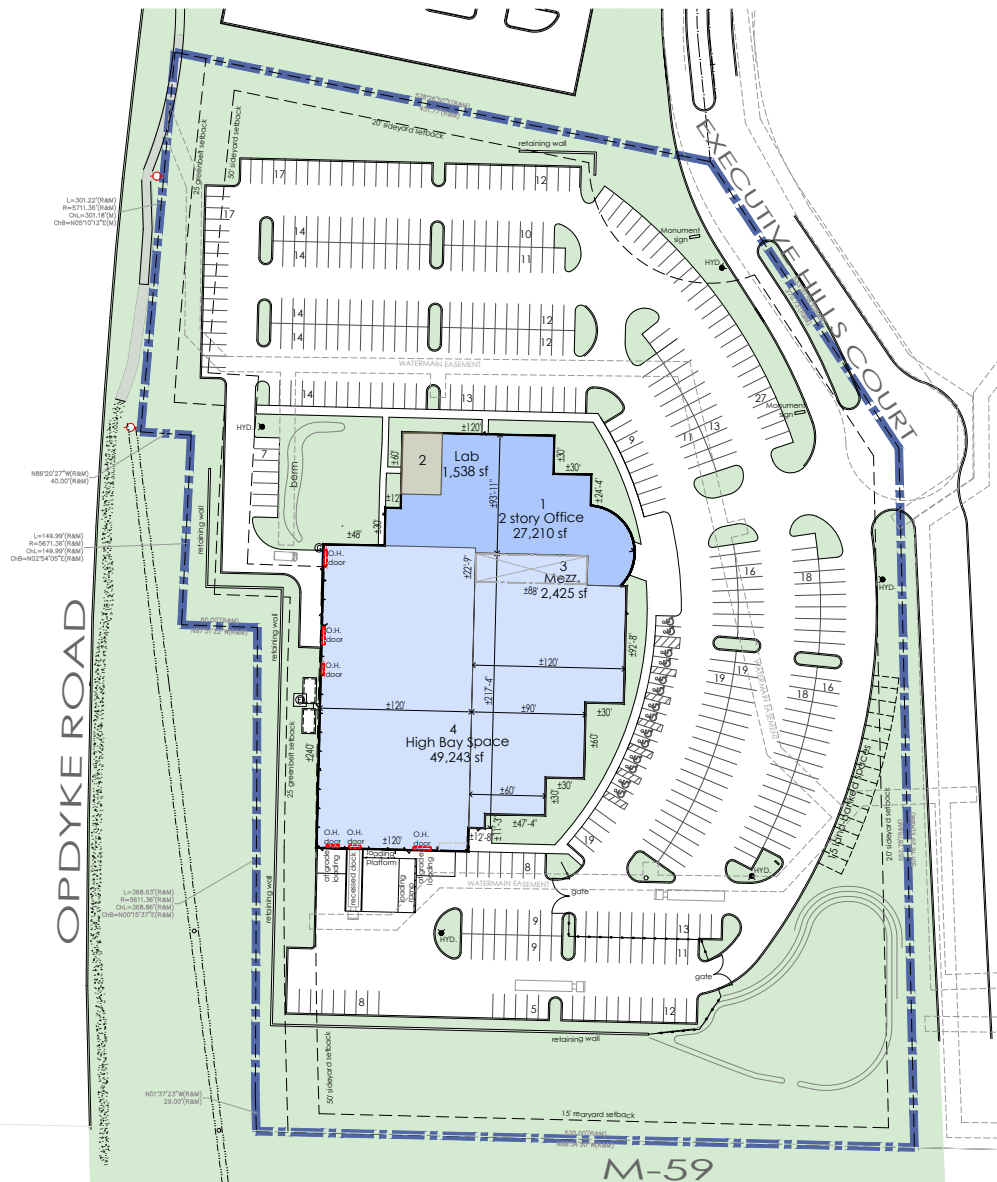
## Floor Plan



## Second Story Office



## Site Plan



# Proposed Expansion Plan







# 2110 Executive Hills Ct

AUBURN HILLS, MI

**TOM OLDHAM**

248-357-6595

[tom.oldham@nmrk.com](mailto:tom.oldham@nmrk.com)

**DAN LABES**

248-357-6578

[dan.labes@nmrk.com](mailto:dan.labes@nmrk.com)

- ▶ **80,416** SF Available
- ▶ **27,210** SF Two-Story Office
- ▶ Expandable to **133,000** Square Feet
- ▶ **Completely Renovated** Building Finished to Suit
- ▶ **24'** Clear Height
- ▶ **Three** 12'X14' Grade Level Doors
- ▶ **One** Truckwell, More Possible
- ▶ **5000** Amps, **480** Volts Power
- ▶ Easy Access to **I-75** and **M-59**
- ▶ **For Sale or Lease**

**NEWMARK**

[nmrk.com](http://nmrk.com)

The information contained herein has been obtained from sources deemed reliable but has not been verified and no guarantee, warranty or representation, either express or implied, is made with respect to such information. Terms of sale or lease and availability are subject to change or withdrawal without notice.