



# 3820 N. Elm Street

Greensboro, North Carolina 27455

## Property Highlights

- Suite 602 & 603 Combined
- ±4,412 SF Available
- Close proximity to restaurants, shopping, banking, and surrounding medical facilities
- Quiet office park setting
- Building signage available

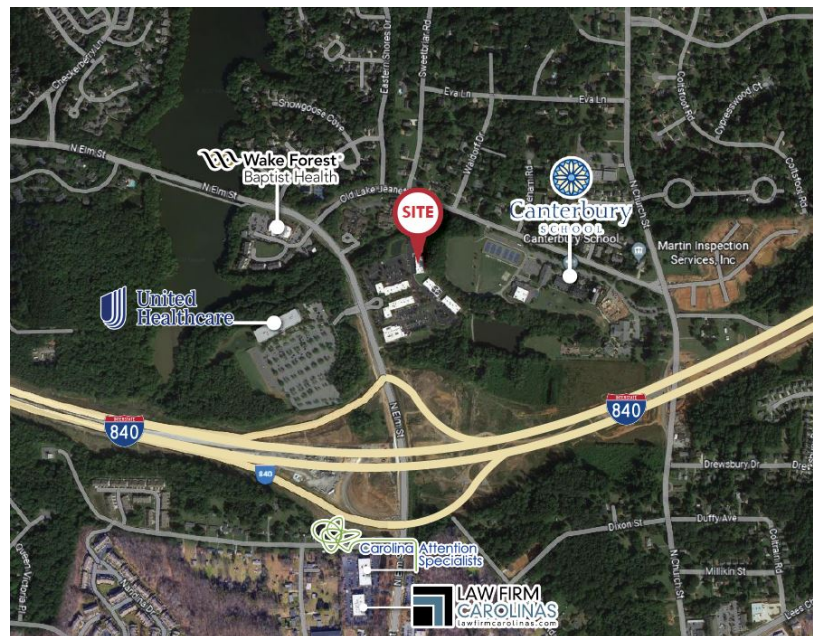
## Demographics

	1 Mile	3 Miles	5 Miles
<b>Total Households</b>	2,212	22,572	51,036
<b>Total Population</b>	5,411	53,411	122,215
<b>Average HH Income</b>	\$81,512	\$75,024	\$71,755

<b>Total Households</b>	2,212	22,572	51,036
<b>Total Population</b>	5,411	53,411	122,215
<b>Average HH Income</b>	\$81,512	\$75,024	\$71,755

<b>Total Households</b>	2,212	22,572	51,036
<b>Total Population</b>	5,411	53,411	122,215
<b>Average HH Income</b>	\$81,512	\$75,024	\$71,755

## CALL FOR PRICING



## For More Information

**Allen Jones**  
 C: 336 314 1631  
 ajones@naipt.com

348 N Elm Street  
 Greensboro, NC 27401  
 336 373 0995 tel  
[naipt.com](http://naipt.com)

We obtained the information above from sources we believe to be reliable. However, we have not verified its accuracy and make no guarantee, warranty or representation about it. It is submitted subject to the possibility of errors, omissions, change of price, rental or other conditions, prior sale, lease or financing, or withdrawal without notice. We include projections, opinions, assumptions or estimates for example only, and they may not represent current or future performance of the property. You and your tax and legal advisors should conduct your own investigation of the property and transaction.



