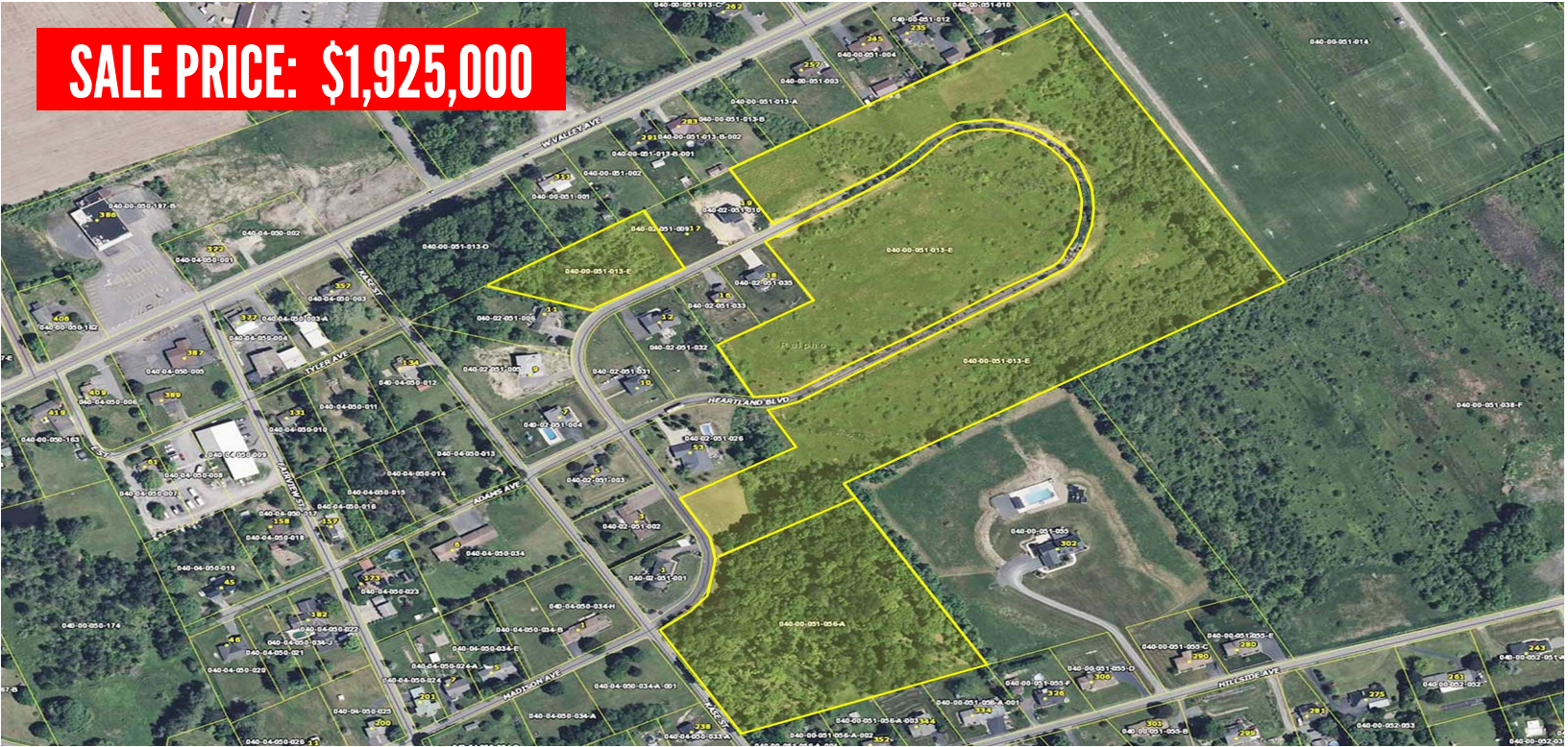


AVAILABLE LAND NORTHUMBERLAND COUNTY, PA

SALE PRICE: \$1,925,000



HEARTLAND BOULEVARD, ELYSBURG, PA 17824

Housing development opportunity for the enterprising entrepreneurial developer with a vision for the future. Public utilities are available. Individual residential lots may also be purchased. Property is convenient to Danville and the Geisinger Medical Center and in close proximity to Knoebel's Grove Family Entertainment Park. Contact listing agent for remaining lot locations.

PROPERTY DETAILS:

- 24.92+/- Acres
- PINs: 040-00-051-056-A; 040-00-051-013-E
- Public Utilities in Area
- Zoned Residential
- 2026 Taxes - \$1,532.88

For Information Contact:

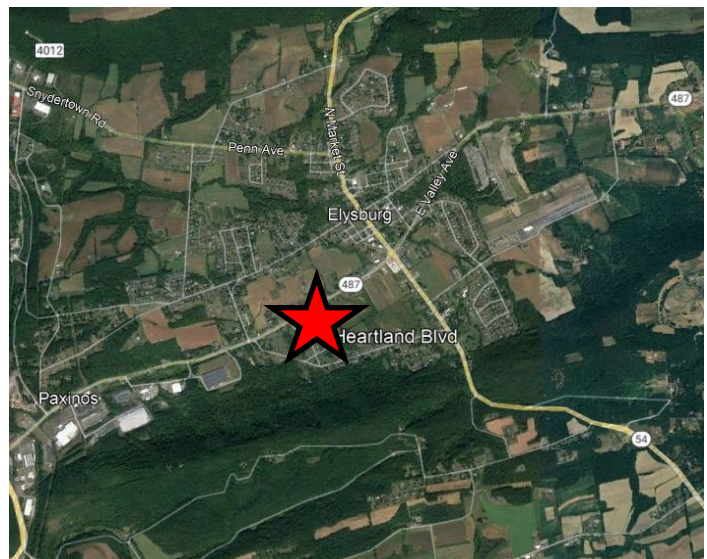
Donald Cortese, CCIM, Sales Associate

dcortese@mericle.com

Office: 570.323.1100 * Cell: 570.772.1817

LATITUDE: 40.857243

LONGITUDE: -76.554114



Information shown is purported to be from reliable sources. No representation is made to the accuracy thereof, and is submitted subject to errors, omissions, prior sale/lease, withdrawal notice, or other conditions.

570.823.1100
mericle.com



East Mountain Corporate Center
100 Baltimore Drive
Wilkes-Barre, PA 18702

Developing Northeastern Pennsylvania's I-81 Corridor Since 1985

TCN
WORLDWIDE
REAL ESTATE SERVICES