

For Sale | Assisted Living / Memory Care

Haciendas at Grace Village

2802 Corte Dios, Las Cruces NM 88011



Randy McMillan | randy@1stvalley.com | 575.640.7213

Jake Redfearn | jake@1stvalley.com | 575.635.5895

We obtained the information above from sources we believe to be reliable. However, we have not verified its accuracy and make no guarantee, warranty or representation about it. It is submitted subject to the possibility of errors, omissions, change of price, rental or other conditions, prior sale, lease or financing, or withdrawal without notice. We include projections, opinions, assumptions or estimates for example only, and they may not represent current or future performance of the property. You and your tax and legal advisors should conduct your own investigation of the property and transaction.

1155 S Telshor Blvd
Las Cruces, NM 88011
(575) 521 - 1535
1stvalley.com

Listing Overview



- Sale includes business, buildings, and ± 4 acre property
- The subject ± 4 acre parcel has enough room to add two additional 12 unit buildings
- An adjacent ± 7.4 acres of additional land is also available for sale; this land is entitled and zoned for expansion.

Haciendas at Grace Village

Sale Price	\$ 11,440,000
Cap Rate	8.5%
Lot Size	± 4.0 AC
Property Type	Memory Care Assisted Living Facility
Number of Buildings	5 (1 admin; 4 secured resident)

Additional Land

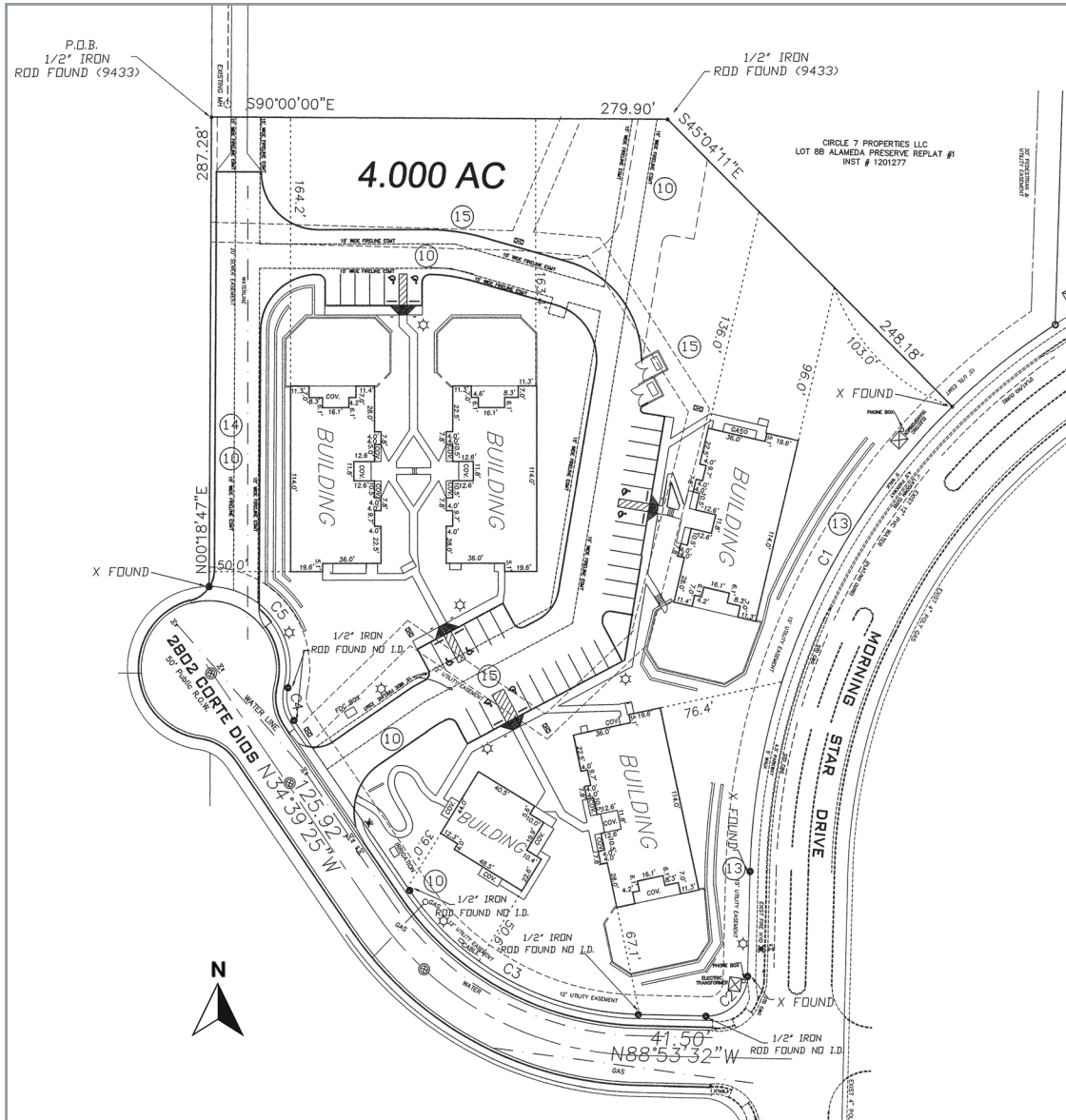
Sale Price	\$ 1,290,000 (322,344 SF @ \$4.00/sf)
Lot Size	± 7.4 AC



We obtained the information above from sources we believe to be reliable. However, we have not verified its accuracy and make no guarantee, warranty or representation about it. It is submitted subject to the possibility of errors, omissions, change of price, rental or other conditions, prior sale, lease or financing, or withdrawal without notice. We include projections, opinions, assumptions or estimates for example only, and they may not represent current or future performance of the property. You and your tax and legal advisors should conduct your own investigation of the property and transaction.

1155 S Telshor Blvd
Las Cruces, NM 88011
(575) 521 - 1535
1stvalley.com

Survey (2802 Corte Dios)



* Lot lines are approximate; for visual aid only

We obtained the information above from sources we believe to be reliable. However, we have not verified its accuracy and make no guarantee, warranty or representation about it. It is submitted subject to the possibility of errors, omissions, change of price, rental or other conditions, prior sale, lease or financing, or withdrawal without notice. We include projections, opinions, assumptions or estimates for example only, and they may not represent current or future performance of the property. You and your tax and legal advisors should conduct your own investigation of the property and transaction.

1155 S Telshor Blvd
Las Cruces, NM 88011
(575) 521 - 1535
1stvalley.com

Haciendas at Grace Village

NAI 1st Valley



Located in the heart of Las Cruces, New Mexico, Haciendas at Grace Village is a well-established assisted living facility offering an exceptional investment opportunity. This unique property combines modern amenities, a serene environment, and a strong reputation for delivering compassionate care to its residents.

Business Highlights

- Founded in 2012
- 1:6 ratio of caregivers to residents (compared to the state standard of 1:15)
- 24-hour specialized care staff
- Winner of 2024 Mesilla Valley's Community Choice Award
(Category: Services - Assisted/Senior Living)

Services

- Specialized integrative care coordinated by clinical staff
- Certified dementia care practitioners and management on staff
- Medication assistance & hydration management
- Freshly prepared home-style food, with kitchens in each building
- Activities designed specifically for residents with Alzheimer's & other forms of dementia
- Spiritual & religious services
- Weekly housekeeping & linen services
- Laundry & daily tidy services
- All-inclusive pricing

Source: <https://www.gracevillagecl.com/>



We obtained the information above from sources we believe to be reliable. However, we have not verified its accuracy and make no guarantee, warranty or representation about it. It is submitted subject to the possibility of errors, omissions, change of price, rental or other conditions, prior sale, lease or financing, or withdrawal without notice. We include projections, opinions, assumptions or estimates for example only, and they may not represent current or future performance of the property. You and your tax and legal advisors should conduct your own investigation of the property and transaction.

1155 S Telshor Blvd
Las Cruces, NM 88011
(575) 521 - 1535
1stvalley.com

Property Overview

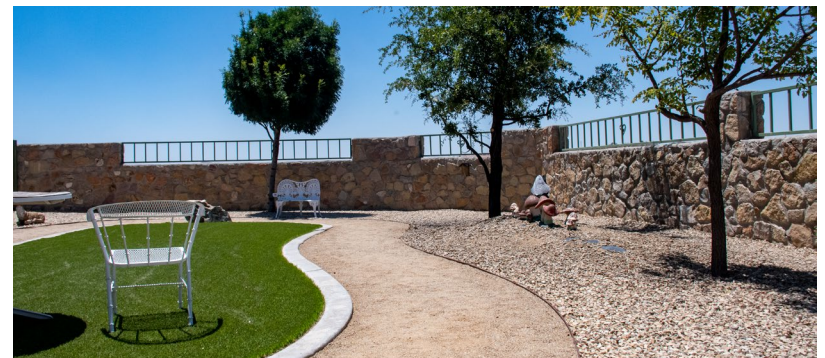


The property consists of a 48-unit memory care assisted living facility that is comprised of five standalone buildings. One building is dedicated to administrative offices and four secured resident buildings provide memory care assisted living.

Each of the resident buildings provide different levels of care, ranging from the lowest level in Building D to the highest level in Building A. Each resident building is licensed for 18-beds in 12-units to allow for double occupancy, but most units are arranged as private single-rooms.

Property Highlights

Zoning	PUD (Planned Unit Development)
Year Built	2012
Total Size	24,484 ± SF
Units	48



We obtained the information above from sources we believe to be reliable. However, we have not verified its accuracy and make no guarantee, warranty or representation about it. It is submitted subject to the possibility of errors, omissions, change of price, rental or other conditions, prior sale, lease or financing, or withdrawal without notice. We include projections, opinions, assumptions or estimates for example only, and they may not represent current or future performance of the property. You and your tax and legal advisors should conduct your own investigation of the property and transaction.

1155 S Telshor Blvd
Las Cruces, NM 88011
(575) 521 - 1535
1stvalley.com



We obtained the information above from sources we believe to be reliable. However, we have not verified its accuracy and make no guarantee, warranty or representation about it. It is submitted subject to the possibility of errors, omissions, change of price, rental or other conditions, prior sale, lease or financing, or withdrawal without notice. We include projections, opinions, assumptions or estimates for example only, and they may not represent current or future performance of the property. You and your tax and legal advisors should conduct your own investigation of the property and transaction.

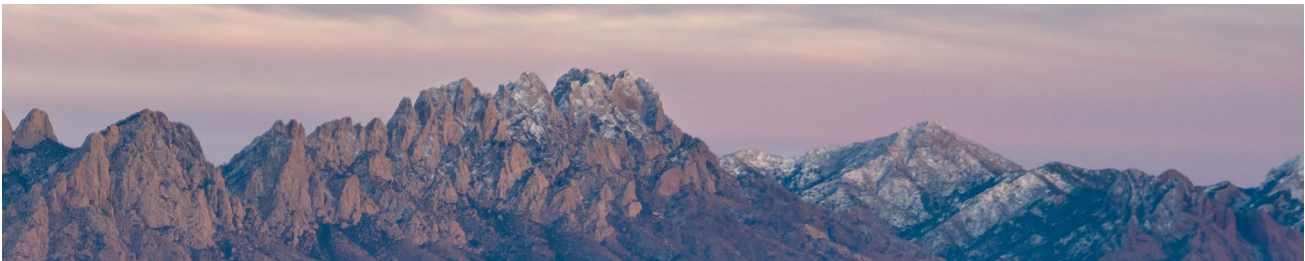
1155 S Telshor Blvd
Las Cruces, NM 88011
(575) 521 - 1535
1stvalley.com

Location Overview

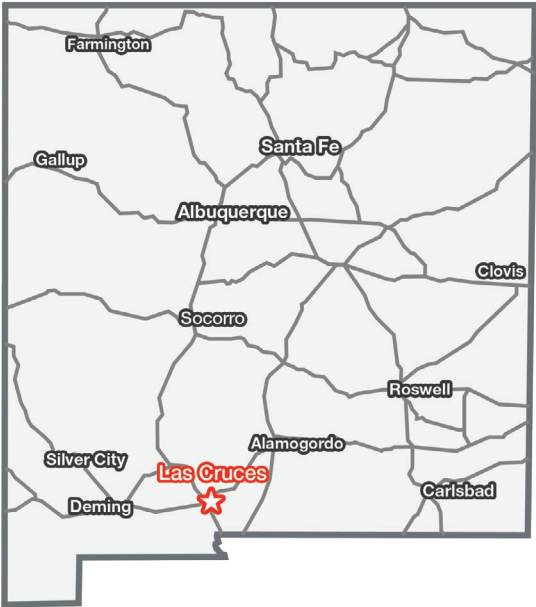


Las Cruces, New Mexico

Las Cruces is the largest city in southern New Mexico, and the second largest in the state. Located on the edge of the Chihuahuan Desert, the city sits at the foot of the Organ Mountains and along the banks of the Rio Grande River. Las Cruces enjoys over 350 days of sunshine a year, receiving an average of only 8.5 inches of rain per year and no more than two inches of snow in the winter.



The city has a population of 113,888 residents and is the county seat of Doña Ana County (app. 219,561 population). Las Cruces is 42 miles north of El Paso, TX, 225 miles south of Albuquerque, NM, and 275 miles east of Tucson, AZ.



Awards & Recognition

- Best Places To Retire in 2024, Forbes
- The 50 Best Places to Live in the U.S, Money.com (2024)
- Top 15 Best Cities in the Country to Raise a Family, Scholaroo.com (2023)
- New Mexico State University, Best Colleges for National Universities, U.S. News & World Report (2022)

Source: www.visitlascruces.com

Major Employers

- New Mexico State University
- Memorial Medical Ctr
- White Sands Missile Range
- Mountain View Regional Medical Ctr
- Dona Ana Branch Community Clg
- Keystone Consolidated Industries
- NASA

Source: www.mveda.com

Doña Ana County

Population	219,561
Total Households	87,688
Average HH Income	\$56,451

Source: US Census Bureau, 2022

We obtained the information above from sources we believe to be reliable. However, we have not verified its accuracy and make no guarantee, warranty or representation about it. It is submitted subject to the possibility of errors, omissions, change of price, rental or other conditions, prior sale, lease or financing, or withdrawal without notice. We include projections, opinions, assumptions or estimates for example only, and they may not represent current or future performance of the property. You and your tax and legal advisors should conduct your own investigation of the property and transaction.

1155 S Telshor Blvd
Las Cruces, NM 88011
(575) 521 - 1535
1stvalley.com