



CLASS A INDUSTRIAL SPACE FOR SUBLEASE

Northlake Commerce Center

12015 N. Lakeridge Pkwy, Ashland, VA



Contact Us

HARRISON MCVEY, SIOR

VICE PRESIDENT

Mobile: 804.512.3243

hmcvey@rangecommercial.com

MATT ANDERSON, SIOR

EXECUTIVE VICE PRESIDENT

Mobile: 804.240.8833

manderson@rangecommercial.com

Range Commercial Partners

7200 Glen Forest Drive, Suite 100

Richmond, VA 23226

804.796.0500

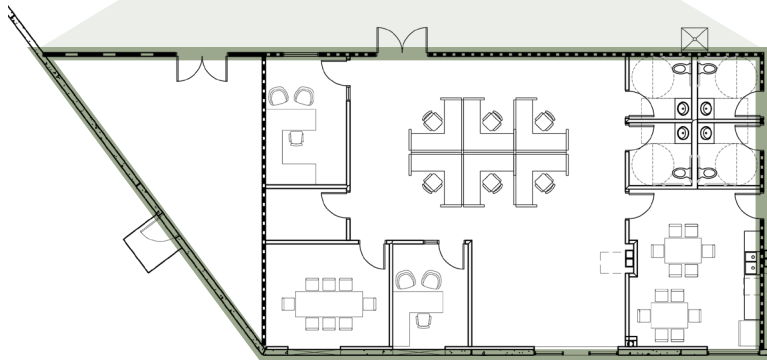
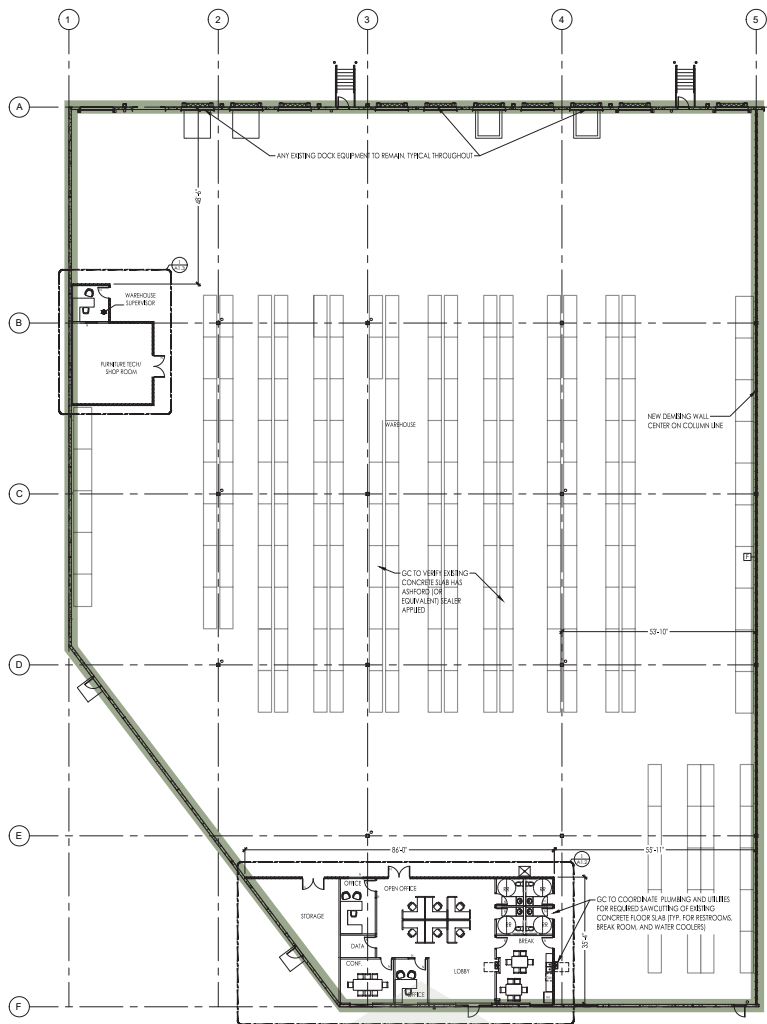
rangecommercial.com

PROPERTY DETAILS

- 44,136 SF available immediately for sublease
- Sublease term through January 2027
- 2,800 SF of office space
 - 2,100 SF in the front offices
 - 700 SF shipping and receiving office
 - 4 restrooms
- 11 dock positions with edge-of-dock levelers
 - 1 extra dock position for trash compactor
- LED lights throughout
- 32' clear heights
 - Racking available upon request
- Pylon signage available

Copyright © 2025 Range Commercial Partners. Information herein has been obtained from sources deemed reliable, however its accuracy cannot be guaranteed. This user is required to conduct their own due diligence and verification.

FLOOR PLAN



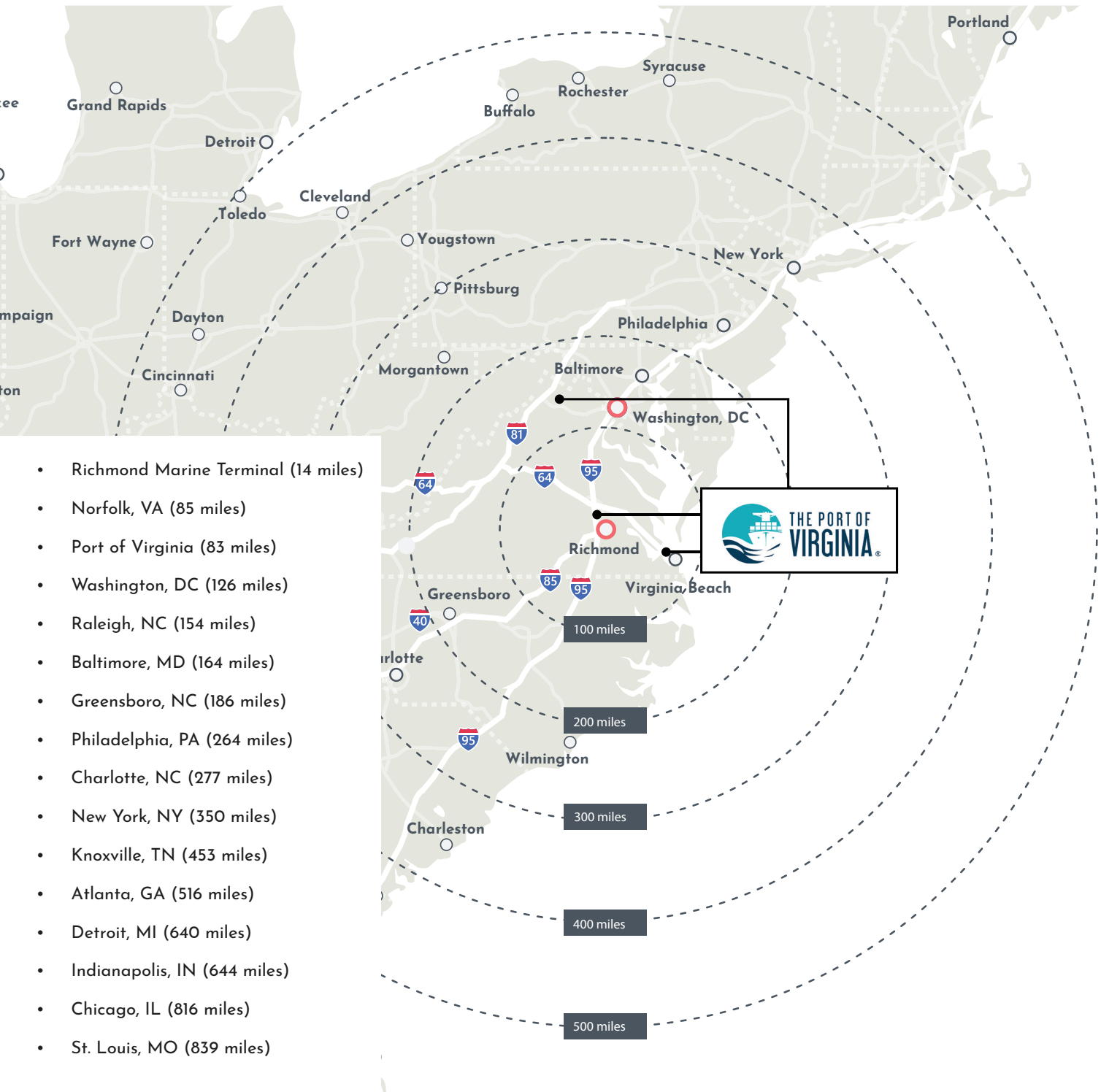
OFFICE FLOOR PLAN

AVAILABLE FOR SUBLEASE | NORTHLAKE COMMERCE CENTER

FLOOR PLAN & AERIAL VIEW



AVAILABLE FOR SUBLEASE | NORTHLAKE COMMERCE CENTER



Contact Us

HARRISON MCVEY, SIOR

VICE PRESIDENT

Mobile: 804.512.3243

hmcvey@rangecommercial.com

MATT ANDERSON, SIOR

EXECUTIVE VICE PRESIDENT

Mobile: 804.240.8833

manderson@rangecommercial.com

