



26,837 SF AVAILABLE FOR SALE

1855 S. KILBOURN AVENUE CHICAGO, ILLINOIS



1855 S. KILBOURN AVENUE

CHICAGO, ILLINOIS

Property Features

Available Size:	26,837 SF
Office Size:	2,500 SF
Site Size:	1.15 Acres
Built:	1956
Clear Height:	14'-21'
Drive-In-Doors:	3 (Crane in each Bay)
Car Parking:	+25 Spaces
Power:	600 Amps @ 240/480 Volts
Column Spacing:	19' x 19'
Sprinkler:	Wet
Sale Price:	\$1,677,312.50 (\$62.50 PSF)
Comments:	<ul style="list-style-type: none">• Rare Free Standing Facility• Crane Served Facility• Four 5-Ton Cranes• Fenced Secured Parking Lot• Heavy Parking or Outside Storage• Manufacturing Amenities



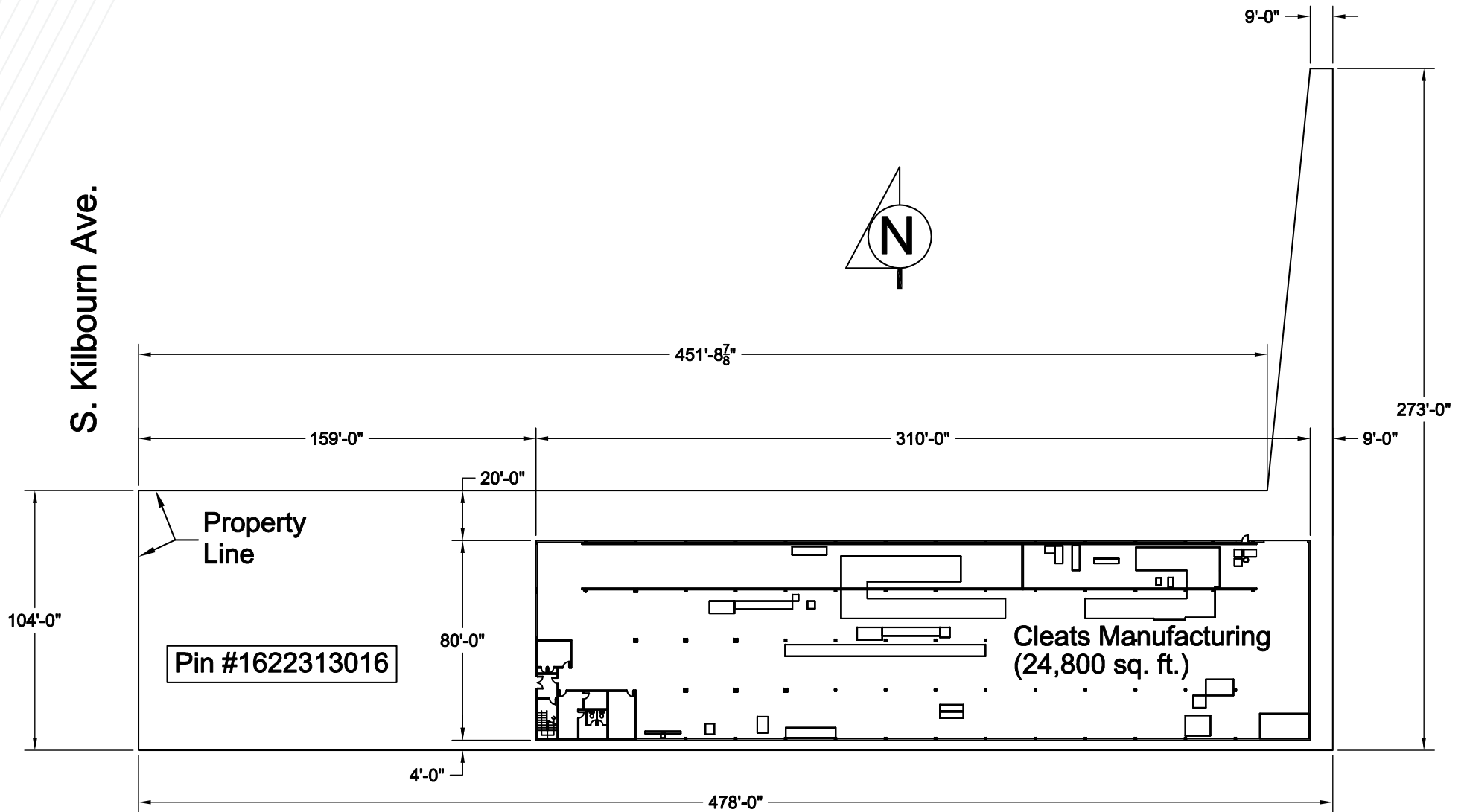
WAREHOUSE



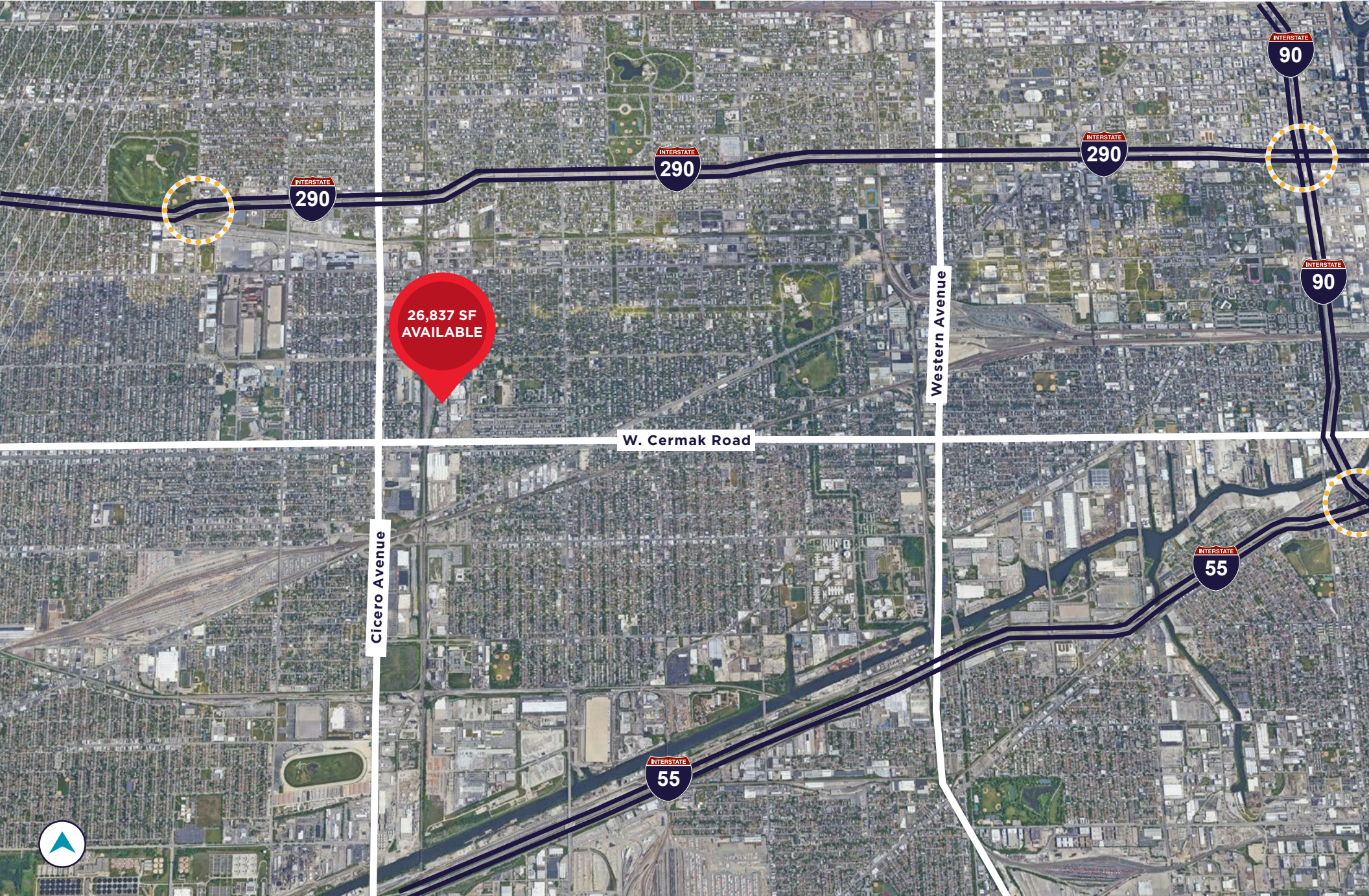
OFFICE

1855 S. KILBOURN AVENUE CHICAGO, ILLINOIS

Floor Plan



1855 S. KILBOURN AVENUE CHICAGO, ILLINOIS



26,837 SF
AVAILABLE

INTERSTATE
290

INTERSTATE
290

INTERSTATE
290

INTERSTATE
90

INTERSTATE
90

Western Avenue

W. Cermak Road

Cicero Avenue

INTERSTATE
55

INTERSTATE
55





FOR MORE INFORMATION, CONTACT:

MICHAEL MAGLIANO

Executive Managing Director
+1 847 518 3259
michael.magliano@cushwake.com

IVAN RAVELO

Associate
+1 773 879 2872
ivan.ravelo@cushwake.com

SALLY MACOICZ

Managing Director
+1 312 470 1823
sally.macoicz@cushwake.com

©2024 Cushman & Wakefield. All rights reserved. The material in this presentation has been prepared solely for information purposes, and is strictly confidential. Any disclosure, use, copying or circulation of this presentation (or the information contained within it) is strictly prohibited, unless you have obtained Cushman & Wakefield's prior written consent. The views expressed in this presentation are the views of the author and do not necessarily reflect the views of Cushman & Wakefield. Neither this presentation nor any part of it shall form the basis of, or be relied upon in connection with any offer, or act as an inducement to enter into any contract or commitment whatsoever. NO REPRESENTATION OR WARRANTY IS GIVEN, EXPRESS OR IMPLIED, AS TO THE ACCURACY OF THE INFORMATION CONTAINED WITHIN THIS PRESENTATION, AND CUSHMAN & WAKEFIELD IS UNDER NO OBLIGATION TO SUBSEQUENTLY CORRECT IT IN THE EVENT OF ERRORS.

