



FOR LEASE

LAKE SIDE EXECUTIVE CENTER

7901,7933 BAYMEADOWS WAY
& 8641 BAYPINE ROAD
JACKSONVILLE, FLORIDA 32256



FOR LEASE

LAKESIDE EXECUTIVE CENTER

7901,7933 BAYMEADOWS WAY & 8641 BAYPINE ROAD • JACKSONVILLE, FLORIDA 32256



BUILDING AMENITIES

- Recently renovated, one-story office buildings
- Door side parking with private entrances
- Private restrooms
- Exterior signage
- Turnkey and custom-built plans available

PROPERTY HIGHLIGHTS

- Conveniently and centrally located in Deerwood Center
- Excellent access I-95, I-295 and Baymeadows Road
- 24/7 security patrol in Deerwood Center

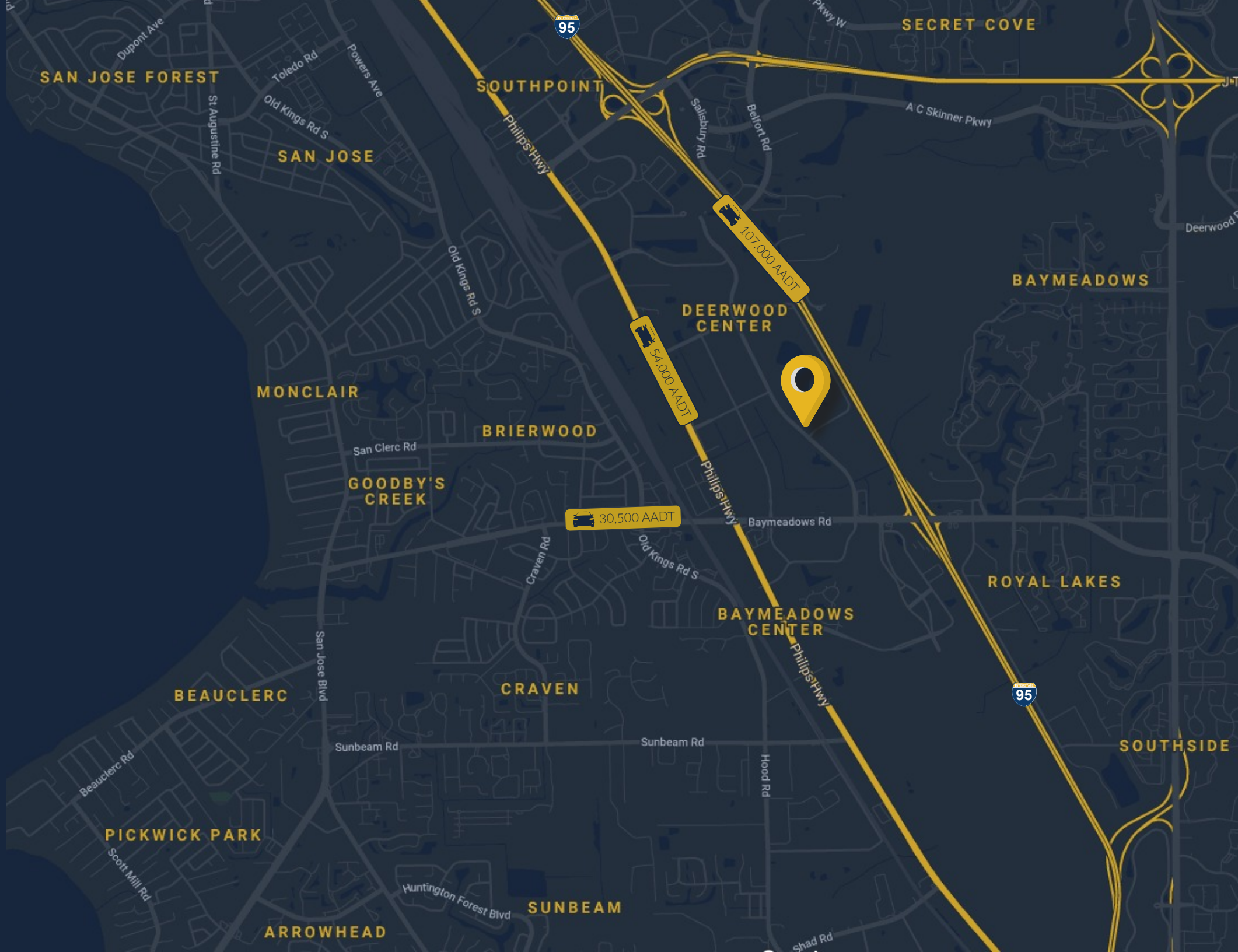




LAKESIDE EXECUTIVE CENTER

BUILDING FEATURES	
TOTAL SQ. FT.	48,177 SF
TOTAL AVAILABLE	±410 - 9,182 SF
LEASE RATE	Negotiable
ZONING	IBP

DEMOGRAPHICS	1 MILE	3 MILES	5 MILES
POPULATION	5,694	75,767	173,631
HOUSEHOLDS	2,296	34,657	74,909
MEDIAN HH INCOME	\$47,876	\$54,321	\$58,967
AVERAGE HH INCOME	\$68,499	\$73,647	\$80,875



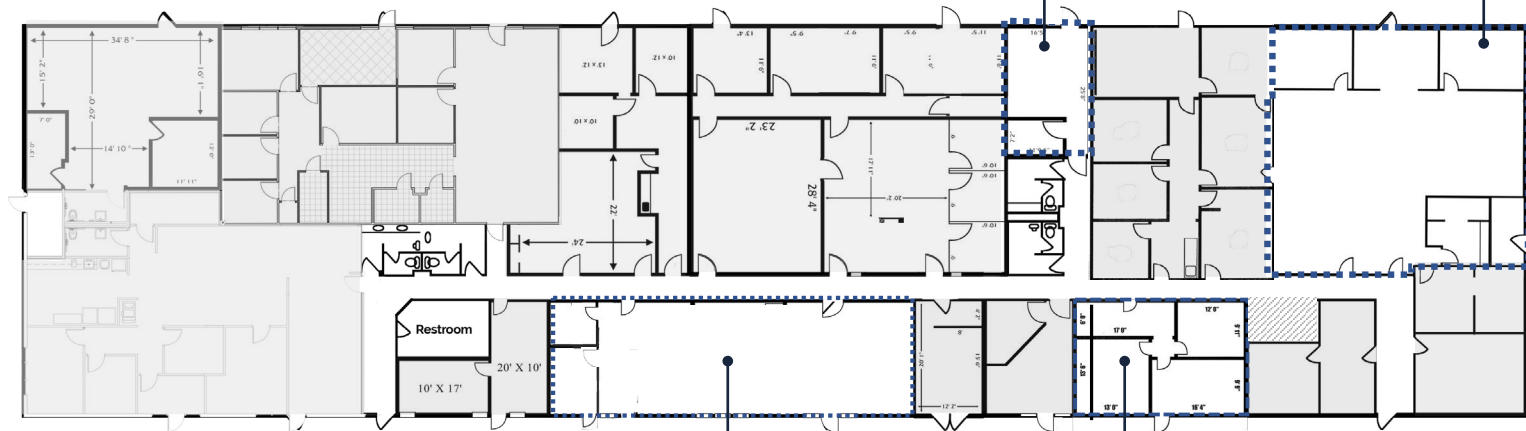
LAKE SIDE EXECUTIVE CENTER

AVAILABLE
SUITE 6
± 410 SF

AVAILABLE
SUITE 10
± 2,050 SF

AVAILABLE
SUITE 16/17
± 1,354 SF

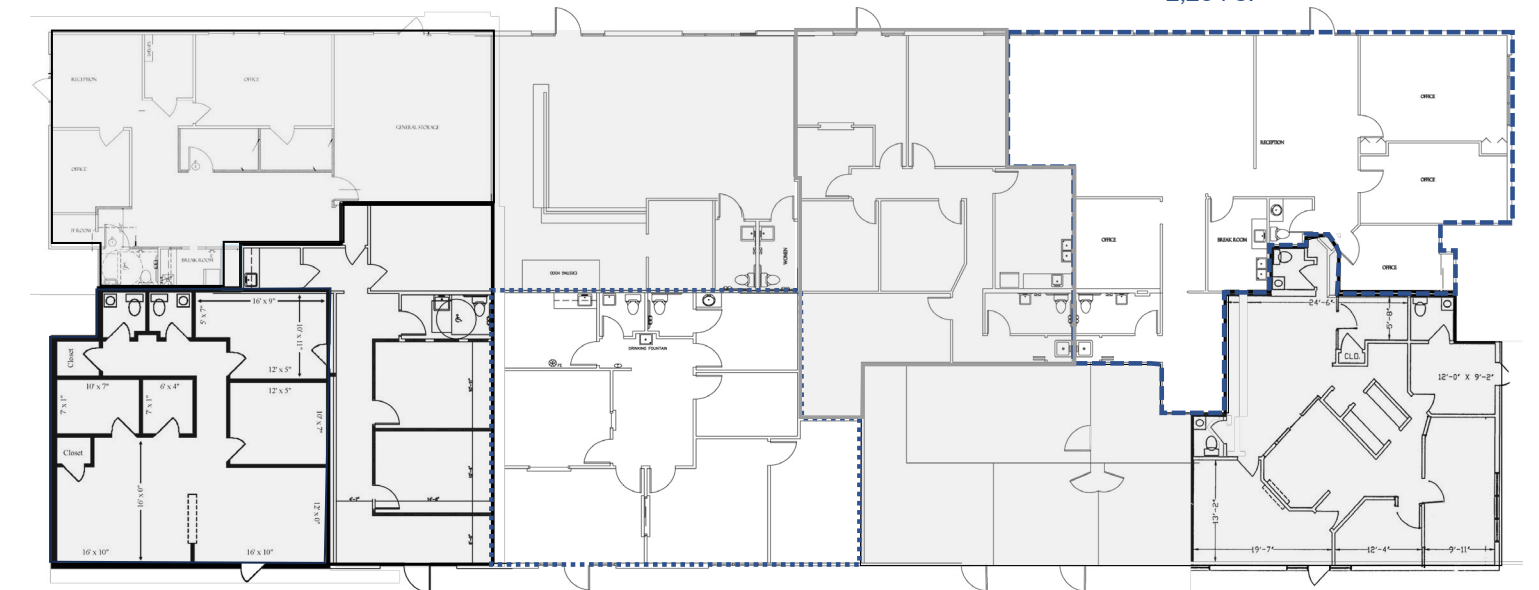
AVAILABLE
SUITE 25
+ 615 SF



LAKESIDE EXECUTIVE CENTER

SUITE 6
AVAILABLE
1/1/26
±2,264 SF

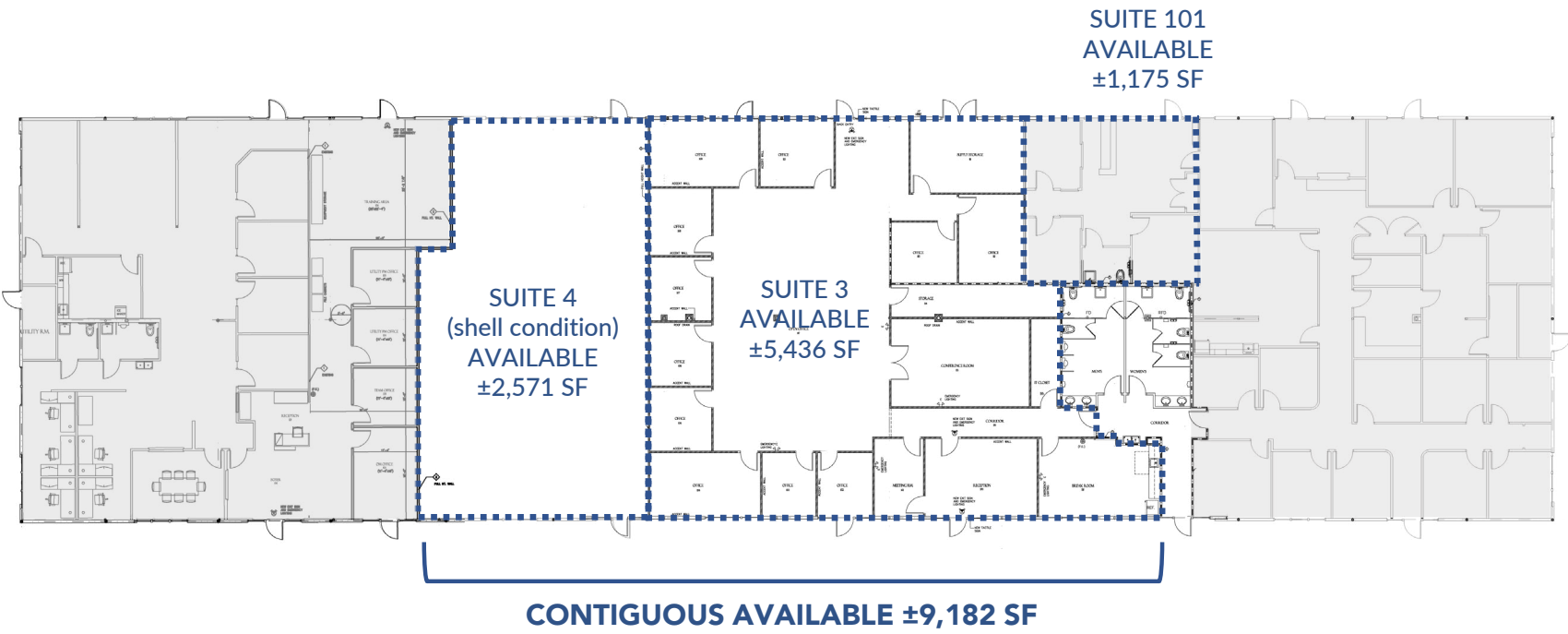
SUITE 3
AVAILABLE
±1,374 SF



FOR LEASE

LAKESIDE EXECUTIVE CENTER

8641 BAYPINE ROAD • JACKSONVILLE, FL 32256





John Hodges, Director of Real Estate Services

leasing@imc-jax.com

7915 Baymeadows Way
Suite 400
Jacksonville, FL 32256

T: 904.737.8846

www.imc-jax.com

