

**LAST SPACE AVAILABLE**

# Draper Crossing

11760 South 700 East • Draper, UT • 84020



**2,926 RSF Available for Lease!**





**2,926 RSF**  
**\$17.00 NNN**

## Property Overview

- \$17.00 NNN
- Parking 4 : 1,000 SF
- Class A lobby and building finishes
- Current Tenant mix makes the space ideal for a variety of medical and office tenants
- Prime South Valley medical building
- Current turnkey medical buildout in place
- Crown Signage Available

## Location Highlights

- Ideal Draper location with countless amenities within 5 minutes
- Convenient I-15 freeway access at 11400 South 12300 South
- One block from Kimballs Lane TRAX Station (11776 South 700 East)



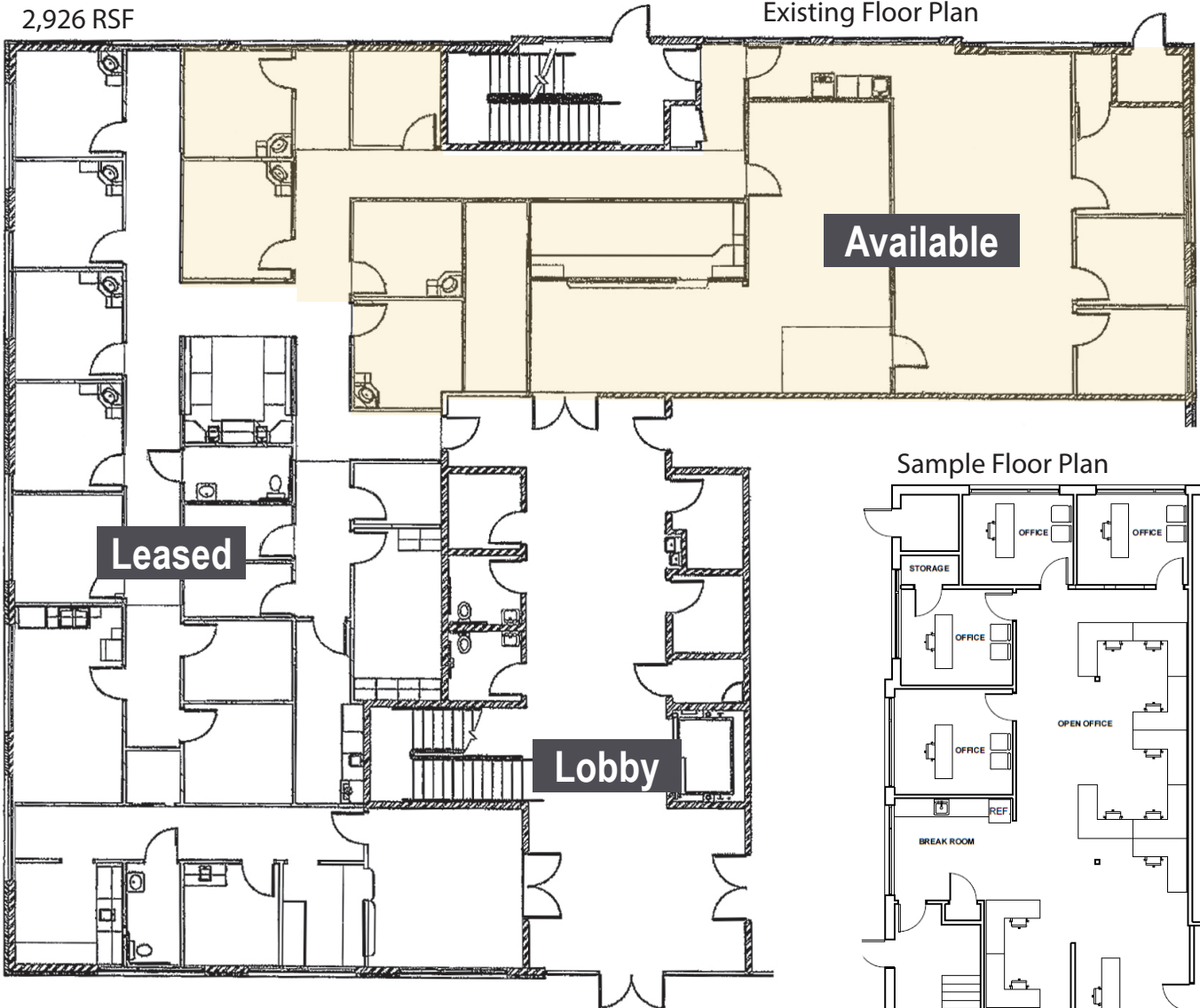
# Draper Crossing

11760 South 700 East • Draper, UT • 84020

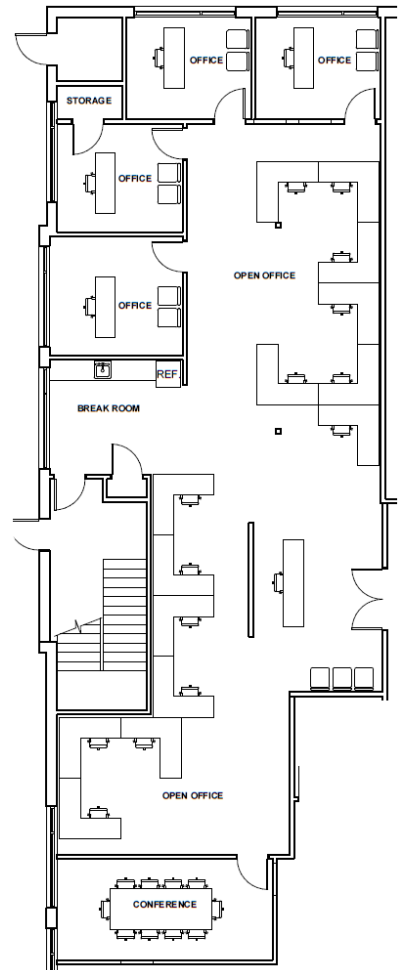
## Availability

2,926 RSF

Existing Floor Plan



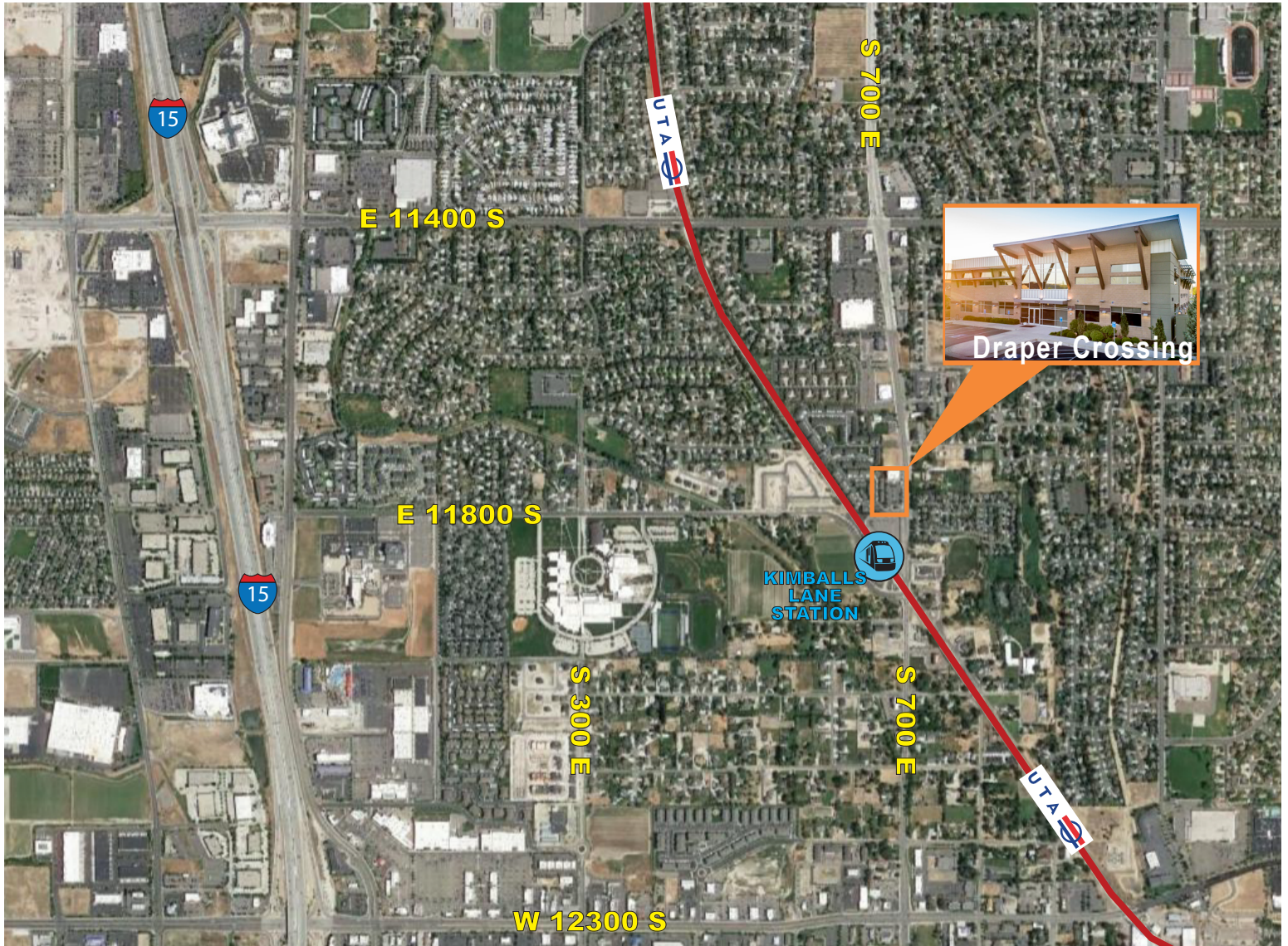
Sample Floor Plan



# Draper Crossing

11760 South 700 East • Draper, UT • 84020

## Great Location!



## Contacts



**JIM BALDERSON**  
+1 801 456 9519  
jim.balderson@am.jll.com

**JENNY TAUMOEPEAU**  
+1 801 456 9536  
jenny.taumoepeau@am.jll.com