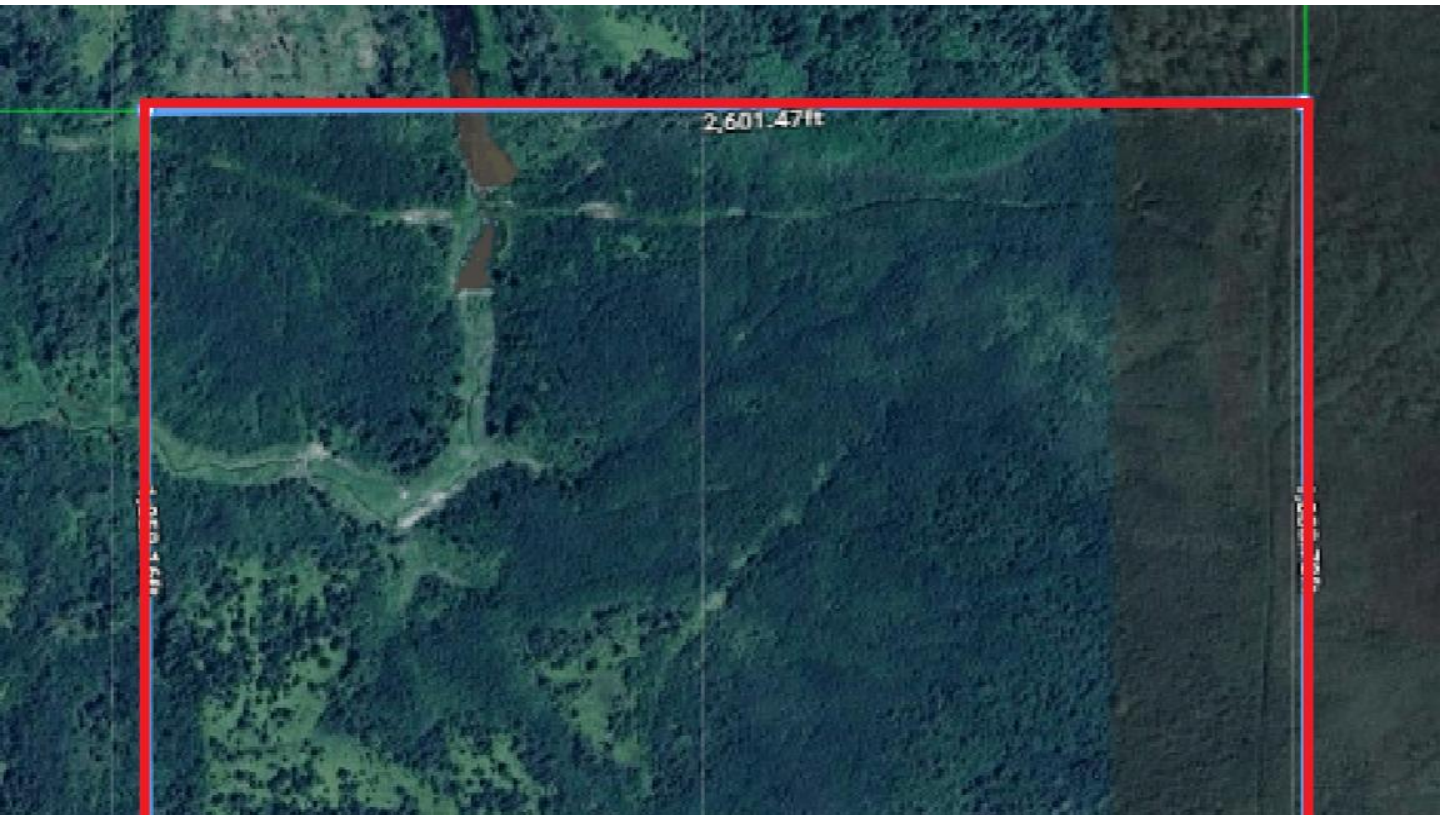


# RAW, UNTOUCHED LAND IN BLACK RIVER – MATHESON



118 acres of serene, untouched land north of Matheson Township, offering ultimate privacy and natural beauty. Accessible via an unopened road allowance and near the Black River, this property is ideal for those seeking a private retreat surrounded by nature.



**Ian Wilson, MBA**  
Managing Director  
K2 Commercial Group  
[iwilson@royalpage.ca](mailto:iwilson@royalpage.ca)  
416-458-8498

Contact us:



# Property Overview

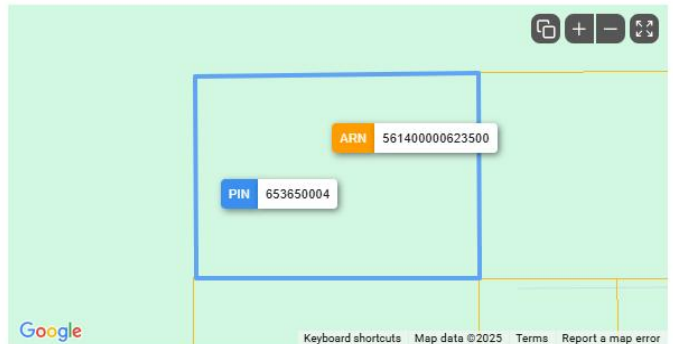
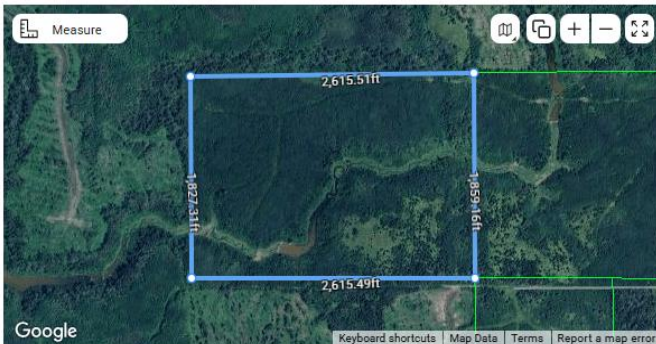
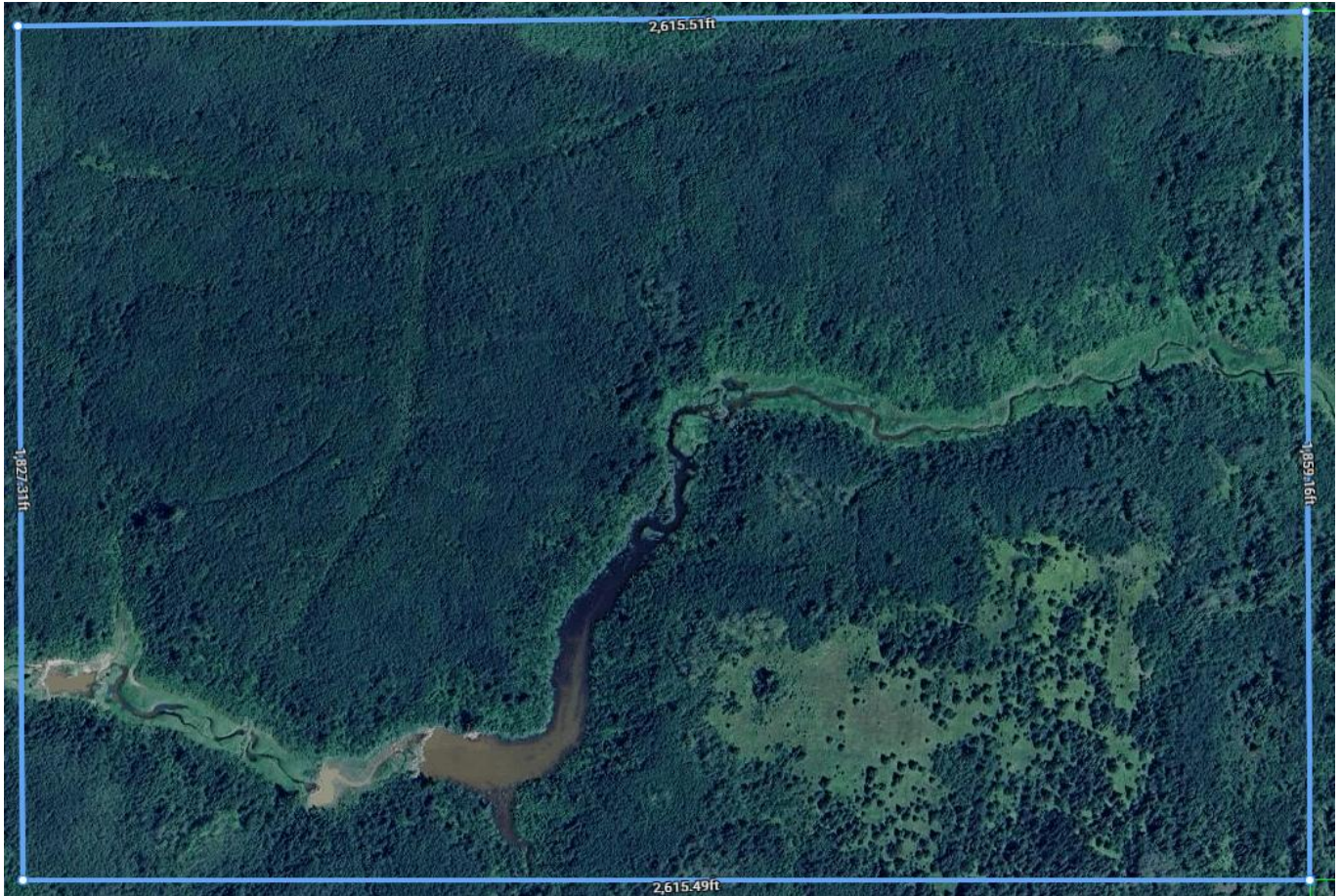
<b>Property Address</b>	N/A CARR CON 6 S PT LOT 8
<b>Location</b>	Black River-Matheson ON P0K
<b>ARN</b>	561400000623500
<b>PIN</b>	653650004
<b>Total Area</b>	2596 ft x 1859 ft 118 Acres
<b>Perimeter</b>	8917.32 ft
<b>Zoning</b>	Rural
<b>Offered at</b>	<b>\$99,900</b>

## Details

Nestled north of Matheson Township, this expansive 118-acre property offers a serene, rural escape surrounded by lush forests and natural beauty. With vast space to explore, the land provides complete privacy and tranquility, accessed via an unopened road allowance. Ideally located near the Black River, it offers direct access to peaceful waters, making it the perfect retreat for recreational use and nature lovers. Plus, the property is just a short drive from the town, offering a unique combination of peaceful privacy and easy access to local amenities.



# Satellite Image



Lot Size

**Area:** 4,820,892.48 ft<sup>2</sup>(110.672 ac)

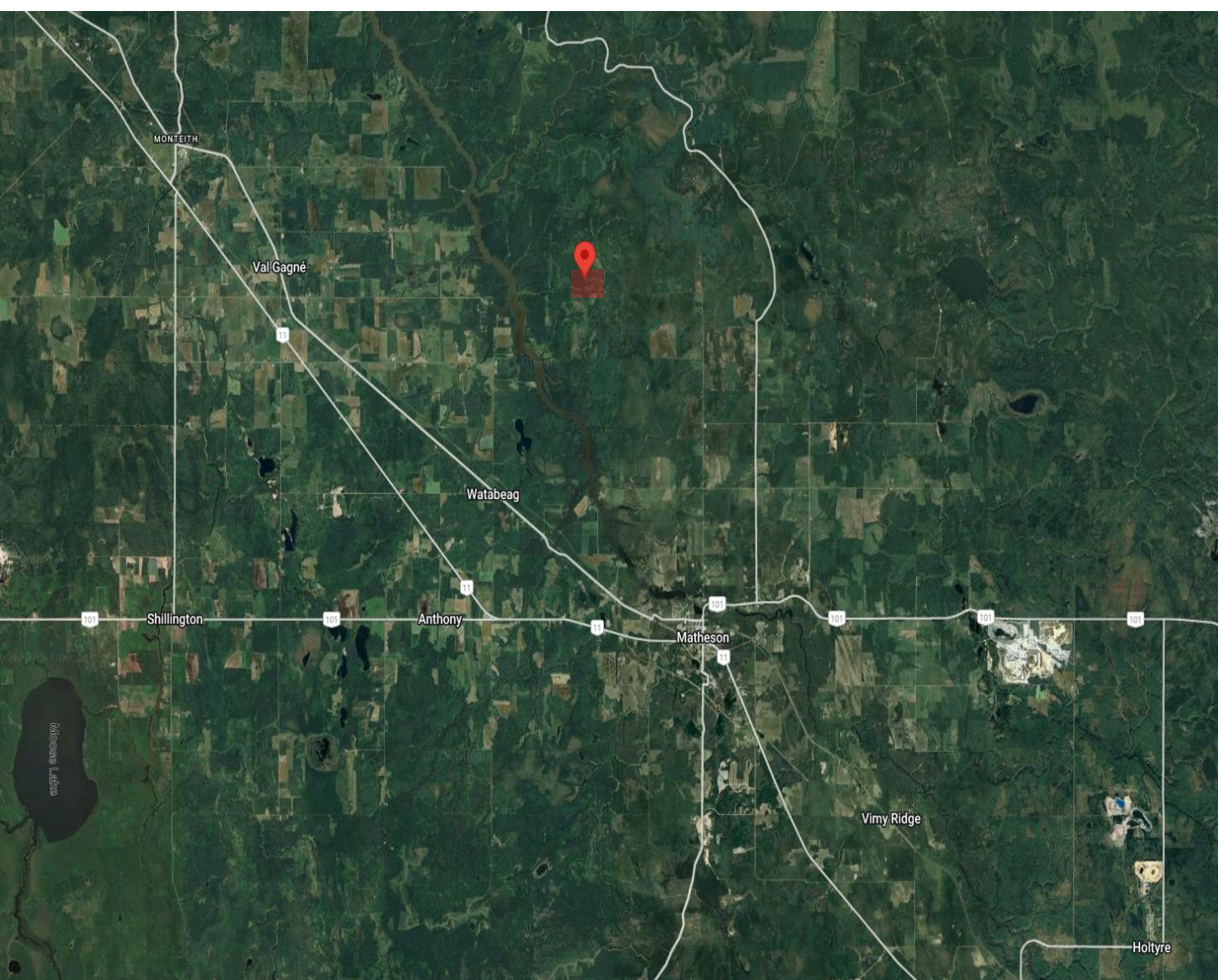
**Perimeter:** 8,917.32 ft

**Measurements:** 2,615.51 ft x 1,827.31 ft x 2,615.49 ft x 1,859.16 ft

**Lot Measurement Accuracy:** LOW



# Location



**For More Information:**

**Ian Wilson, MBA**

Managing Director

K2 Commercial Group

[iwilson@royallepage.ca](mailto:iwilson@royallepage.ca)

416-458-8498

**Contact Us:**

