

MOUNT KISCO PROFESSIONAL OFFICE BUILDING

A DYNAMIC BUSINESS ENVIRONMENT LOCATED IN THE
PROMINENT HUB OF NORTHERN WESTCHESTER



116 Radio Circle Drive

Mount Kisco, NY 10549

ONE SPACE AVAILABLE

DESCRIPTION

- ◆ Modern Professional Building with new Lobby & Marble Hallways
- ◆ Onsite Covered Parking
- ◆ Second Floor 3,850 Sq Ft Office Suite Available
- ◆ High End Finishes Thru-out Interior
- ◆ Turn Key Ready for immediate occupancy
- ◆ Floor plan consists of offices along the curve of the building with large operable windows, 6 large offices, conference room, open support staff area, full size kitchen, full size bathroom with shower.
- ◆ Rent \$26.00 sq. ft. includes Base Year Taxes & CAM;
- ◆ Electric/HVAC: \$3 sq ft
- ◆ 24 Hour Access
- ◆ Great location, Easy access Saw Mill & Rt 684

COMMUTER RAIL DRIVE DISTANCE

Mount Kisco Station Commuter Rail (Harlem Line) 5 min 1.5 mi

AIRPORT DRIVE DISTANCE

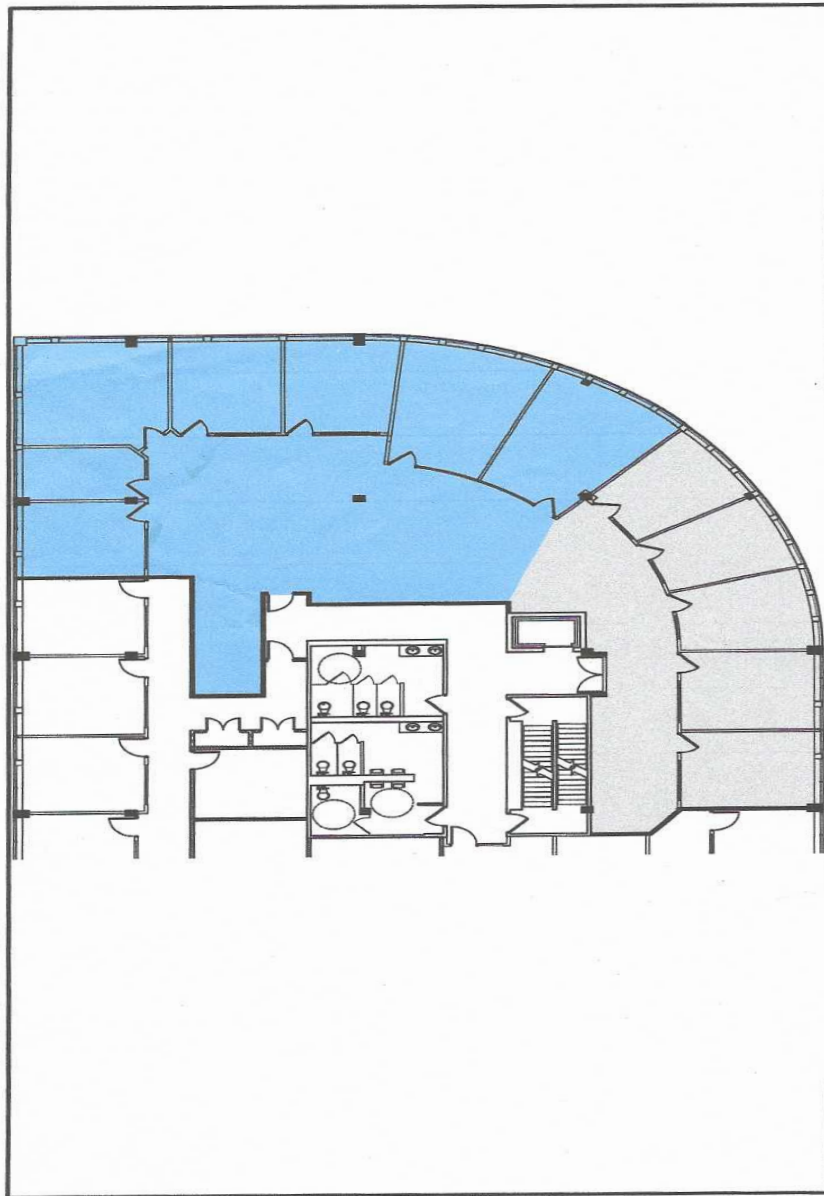
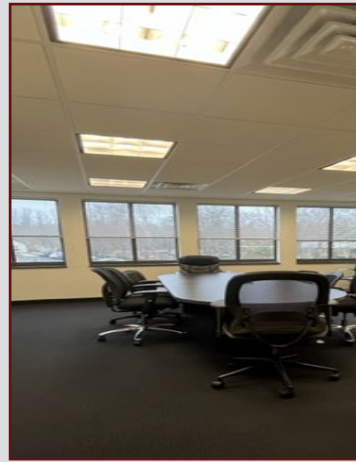
Westchester County Airport: 19 min 12.9 mi




Select Properties
LTD.

Diana Chiulli, President • *Commercial Sales & Leasing*
344 Main Street, Suite 101 • Mount Kisco, NY 10549
914-666-9400

select1@optonline.net • diana.chiulli@icloud.com



 CARDARELLI DESIGN GROUP INC. Architecture and Planning 110 COLLEGE ROAD WESTFIELD, NY 12090 Phone: 518/363-8311 Fax: 518/363-8314		DWG #	E1
		DATE: Jun. 12, 2009	
BUCKINGHAM PROPERTIES BUILDING ADDRESS 116 Radio Circle Mount Kisco, New York		PROJECT TITLE SUITE #204 - EXISTING CONDITIONS DRAWING TITLE EXISTING CONDITIONS 2nd Floor SCALE: N.T.S.	

© COPYRIGHT 2007 This drawing is the property of the CD Group. It is subject to copyright laws and shall not be used or copied without express written permission.



Diana Chiulli, President • *Commercial Sales & Leasing*
 344 Main Street, Suite 101 • Mount Kisco, NY 10549
 914-666-9400
 select1@optonline.net • diana.chiulli@icloud.com