

# APEX BUSINESS CENTER

4141/4201/4225 38TH ST. S., FARGO, ND 58104

  
**GOLDMARK™**  
COMMERCIAL REAL ESTATE INC

## FOR LEASE

Contact  
Agent for  
Incentives!



## GREAT SOUTH FARGO OFFICE & WAREHOUSE FOR LEASE

Space Available: 810 - 10,340 SF

Base Rent: \$10.00 - \$13.50 PSF

CAM: \$1.81 PSF

Tenant Expenses: Utilities, Janitorial, Phone/Internet

**Paul Campbell** | 701.893.2826

[paul.campbell@goldmark.com](mailto:paul.campbell@goldmark.com)

**Goldmark Commercial Real Estate**

[www.goldmarkcommercial.com](http://www.goldmarkcommercial.com)



# APEX BUSINESS CENTER

4141/4201/4225 38TH ST. S., FARGO, ND 58104



## SPACE AVAILABLE

810 - 10,340 SF

## BASE RENT

\$13.50 PSF = Office  
\$10.00 PSF = Warehouse

## CAM

\$1.81 PSF

## TENANT EXPENSES

Utilities  
Phone/Internet  
Janitorial

## PROPERTY DESCRIPTION:

Fantastic office and warehouse spaces are available at the Apex Business Center! At great rental rates, these office and warehouse spaces are unique to the South Fargo area. Conveniently located near the corner of I-29 and 40th Avenue S, Apex Business Center boasts front door parking, visible monument signage from I-29, and other amenities. Call today to move into your new business headquarters!

## SPACES AVAILABLE FOR LEASE:

### OFFICE SPACE:

4141-2D 810 SF  
4141-E 2,712 SF

4201-108 2,585 SF  
4201-204 1,085 SF  
4201-205 1,040 SF  
4201-208 1,123 SF

4225-107 1,322 SF  
4225-111 10,340 SF

### WAREHOUSE SPACE:

4141-S6 1,800 SF  
4201-H 1,800 SF

This information has been secured from sources we believe to be reliable, but we make no representation or warranties, expressed or implied, as to the accuracy of the information. Interested parties should conduct their own independent investigations and rely only on those results.





# APEX BUSINESS CENTER

4141/4201/4225 38TH ST. S., FARGO, ND 58104



SITE PLAN



## APEX BUSINESSES:

- Dietrich Homes
- Ironclad Marketing
- YMCA Learning Center
- ReNew Medical Clinic
- Sammons Financial
- BioGirls
- Farmers Union Insurance
- Coaches Choice
- Brazil Law Firm

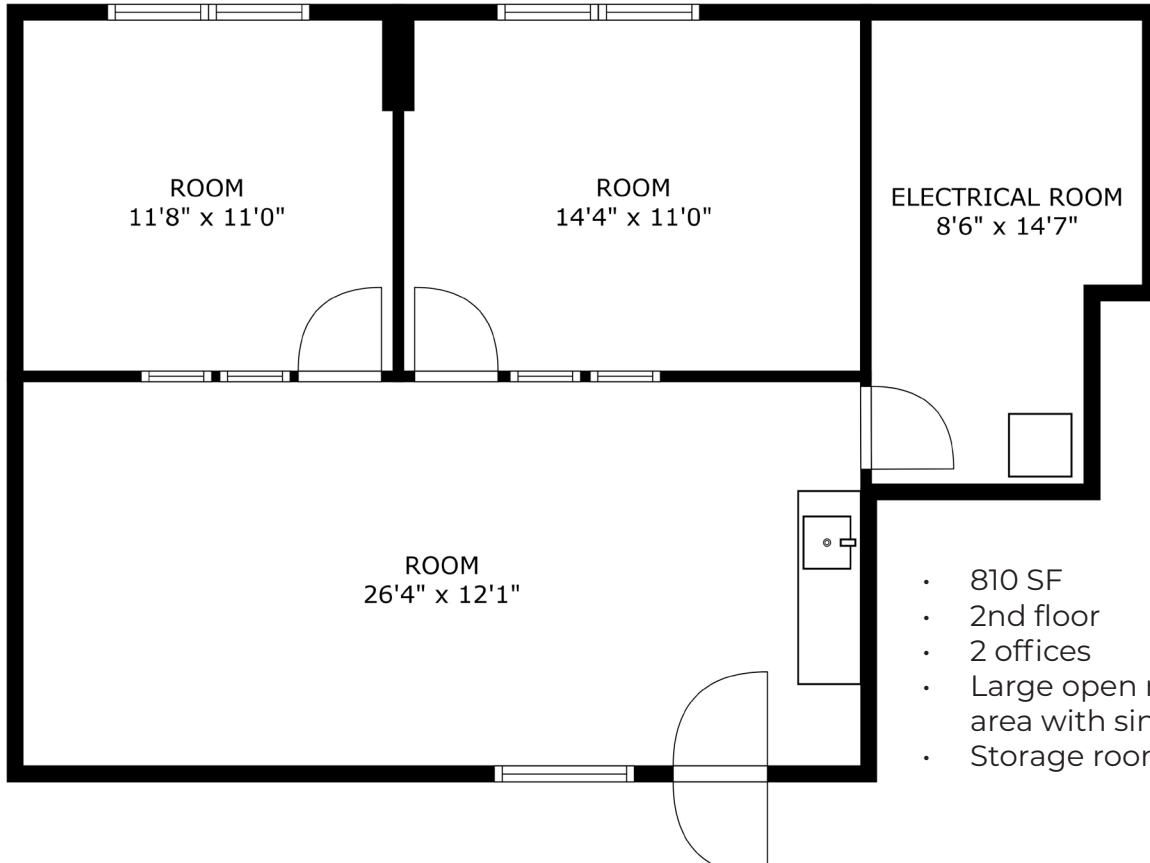
## AREA BUSINESSES:

- Microsoft
- Aldevron
- Titan Machinery
- PAM Rehab
- Vaaler Insurance
- Balance Accounting
- Shotwell Floral
- Aldi
- Essentia Health

# APEX BUSINESS CENTER

4141/4201/4225 38TH ST. S., FARGO, ND 58104

4141 - 2D



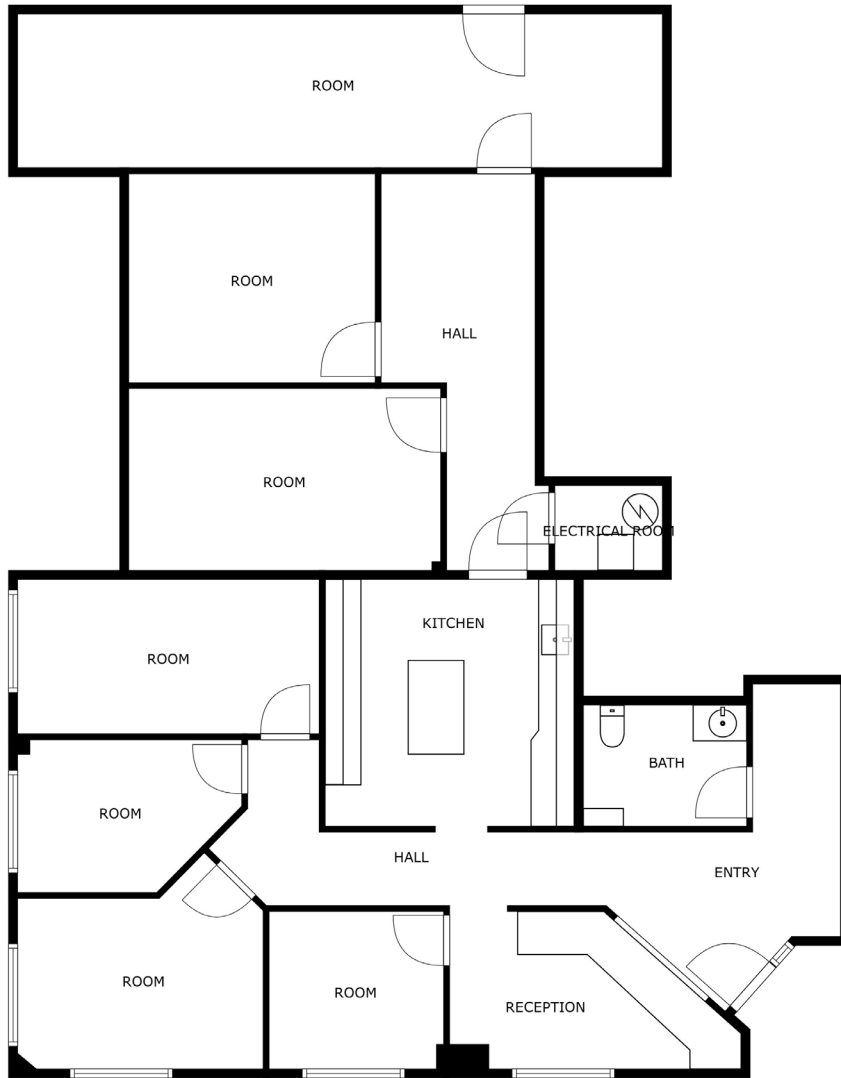


# APEX BUSINESS CENTER

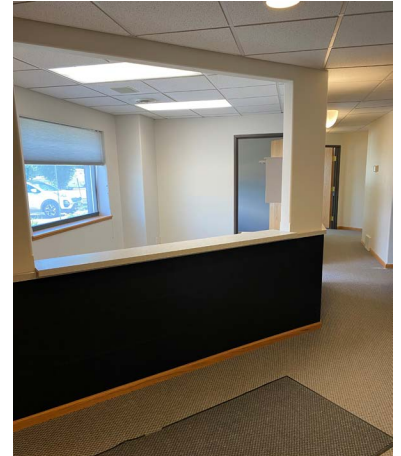
4141/4201/4225 38TH ST. S., FARGO, ND 58104

**GOLDMARK™**  
COMMERCIAL REAL ESTATE INC

4141 - E



- 2,712 SF
- 1st floor with front door parking
- 5 offices
- Conference room
- Private restroom
- Production and lounge area

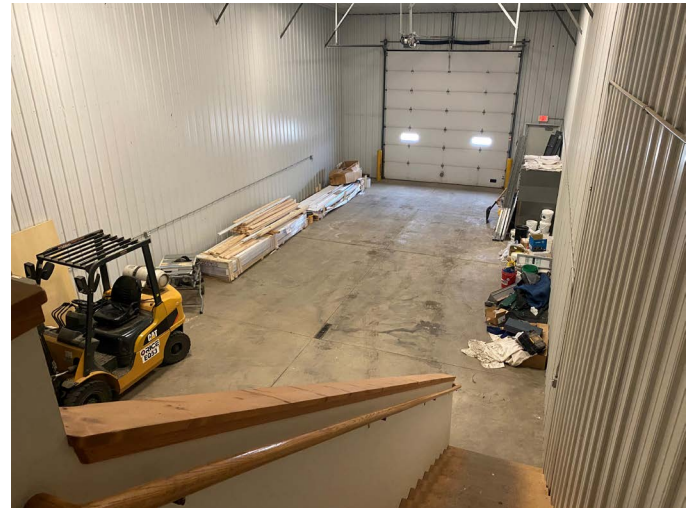


# APEX BUSINESS CENTER

4141/4201/4225 38TH ST. S., FARGO, ND 58104

**GOLDMARK**<sup>TM</sup>  
COMMERCIAL REAL ESTATE INC

4141 - S6



- 1,800 SF
- Warehouse with office area in mezzanine

# APEX BUSINESS CENTER

4141/4201/4225 38TH ST. S., FARGO, ND 58104

**GOLDMARK**<sup>TM</sup>  
COMMERCIAL REAL ESTATE INC

4201 - 108



- 2,585 SF
- 1st floor with front door parking
- Nice foyer area
- Large open area with large windows
- 6 rooms for offices or storage
- Private restroom
- Sink and lounge area



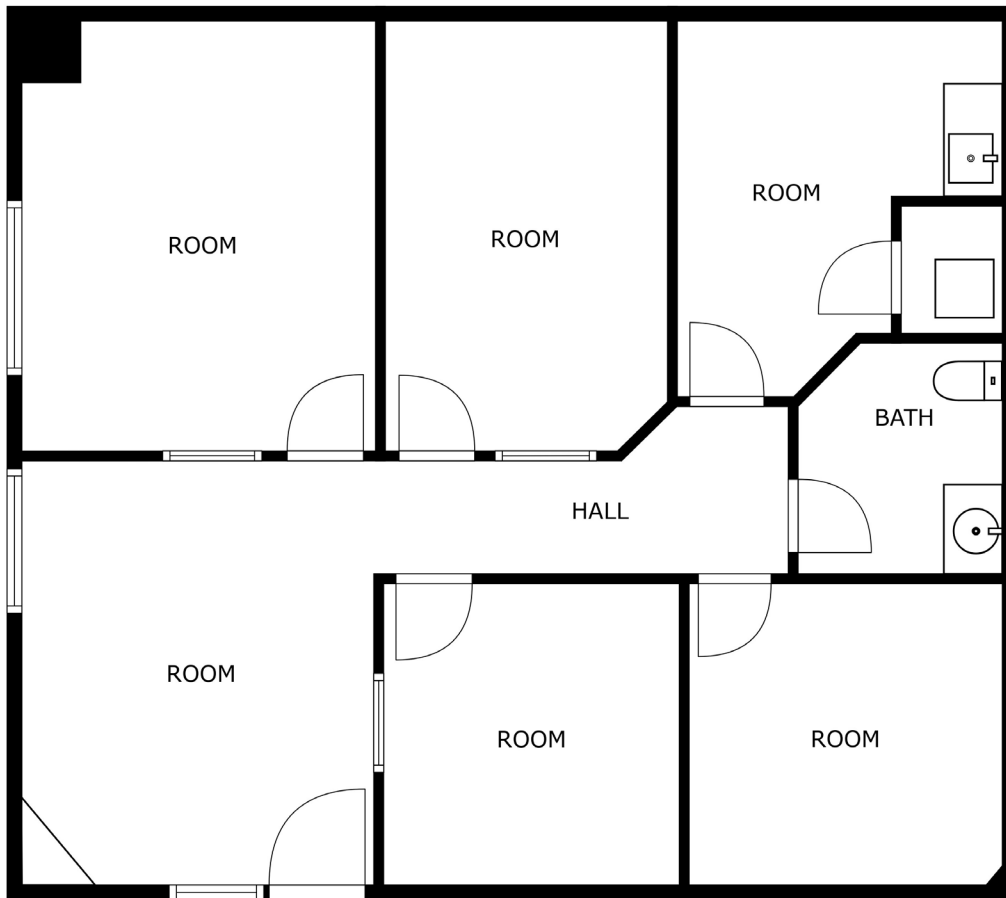


# APEX BUSINESS CENTER

4141/4201/4225 38TH ST. S., FARGO, ND 58104

**GOLDMARK™**  
COMMERCIAL REAL ESTATE INC

4201 - 204



- 1,085 SF
- 4 offices
- Work room
- Open area
- Bathroom

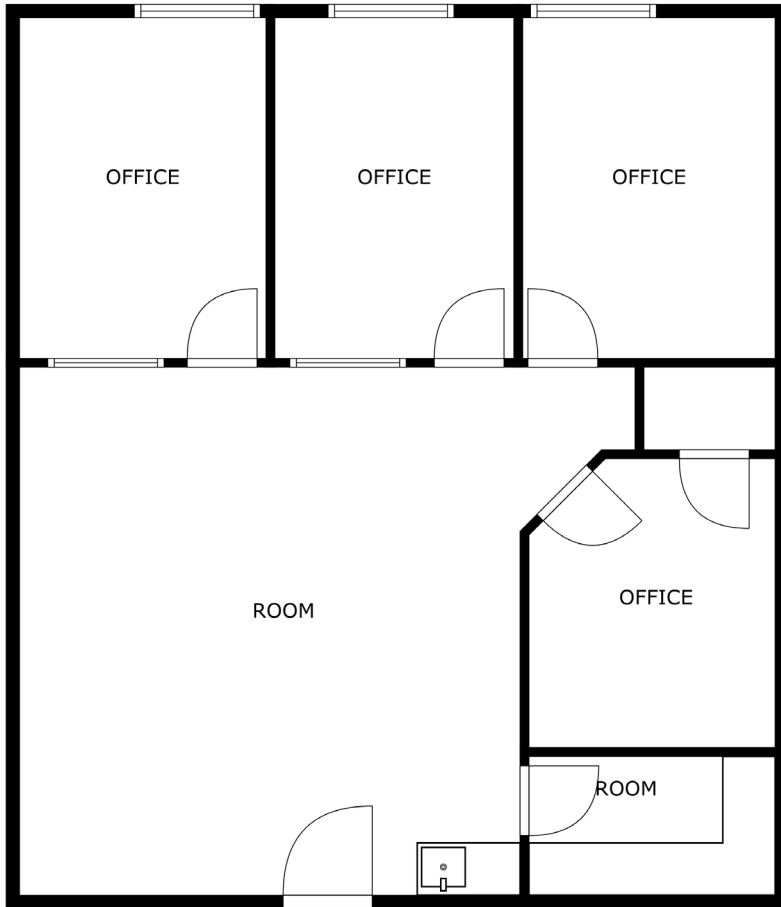


# APEX BUSINESS CENTER

4141/4201/4225 38TH ST. S., FARGO, ND 58104

**GOLDMARK™**  
COMMERCIAL REAL ESTATE INC

4201 - 205



- 1,040 SF
- 4 offices
- Work room
- Open area
- Sink area



# APEX BUSINESS CENTER

4141/4201/4225 38TH ST. S., FARGO, ND 58104

**GOLDMARK**<sup>TM</sup>  
COMMERCIAL REAL ESTATE INC

4201 - 208



- 1,123 SF
- Office space

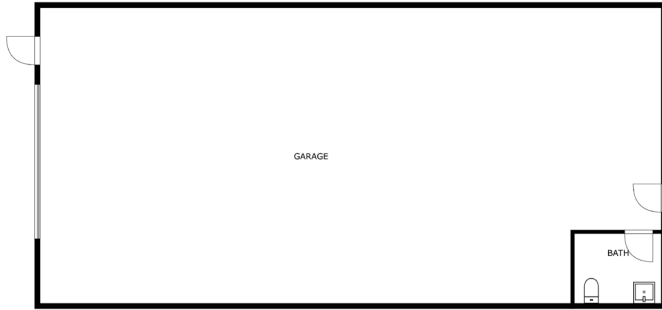


# APEX BUSINESS CENTER

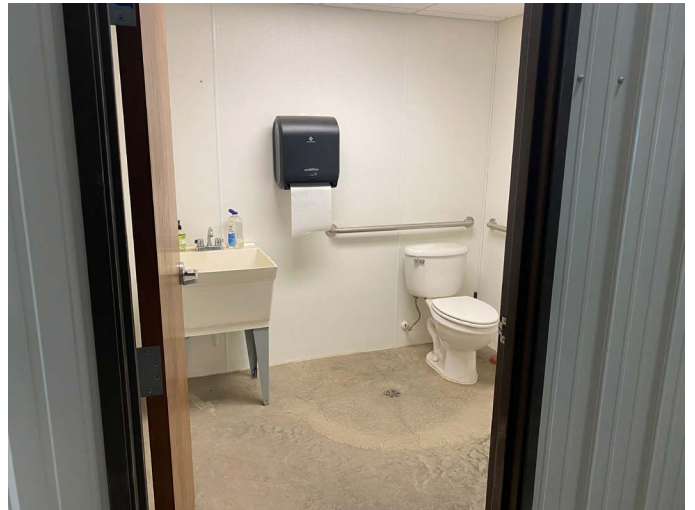
4141/4201/4225 38TH ST. S., FARGO, ND 58104



4201 - H



- 1,800 SF
- Warehouse space

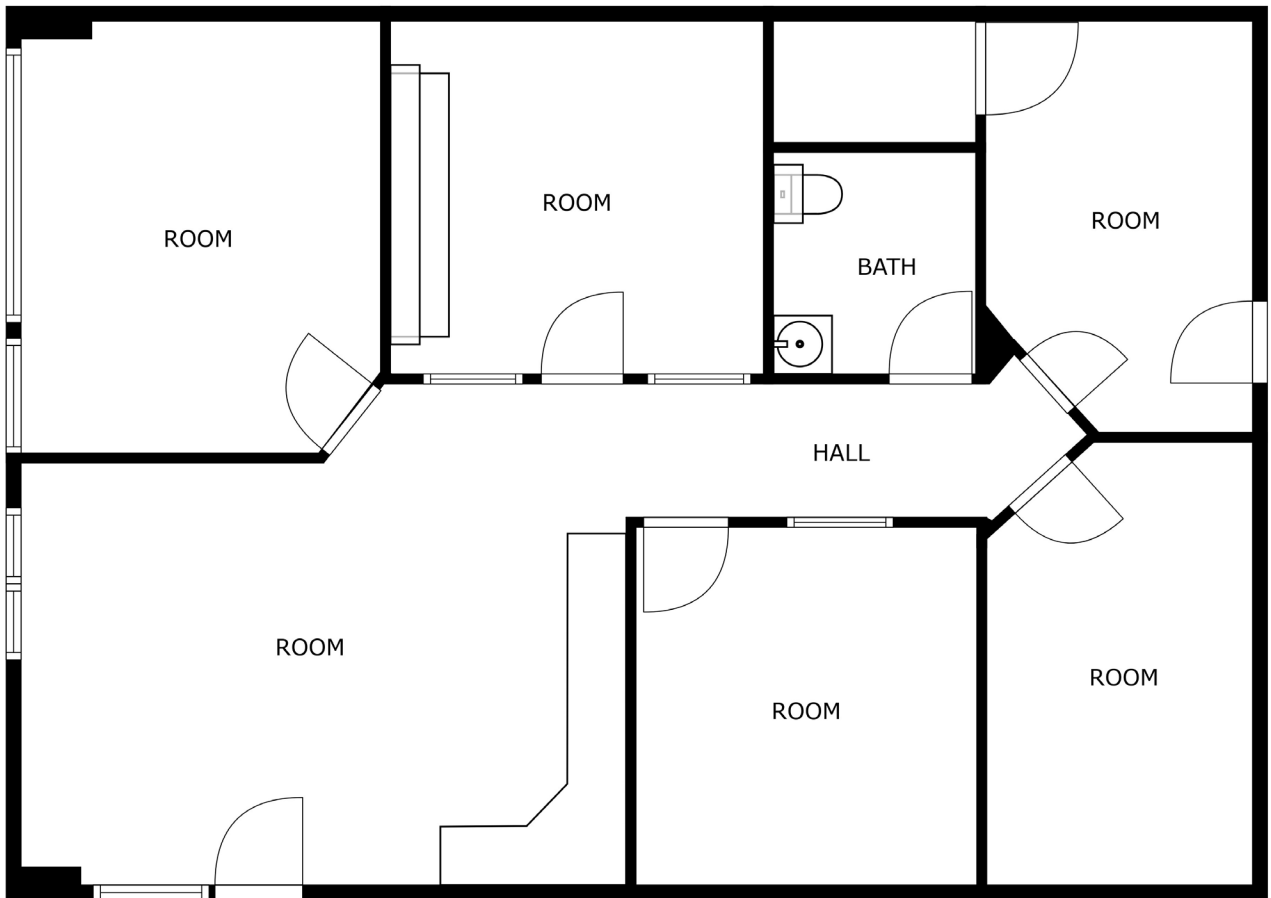


# APEX BUSINESS CENTER

4141/4201/4225 38TH ST. S., FARGO, ND 58104



4225 - 107



- 1,322 SF
- 1st floor with front door parking
- 4 offices
- Lounge/work room
- Private restroom
- New carpet and paint



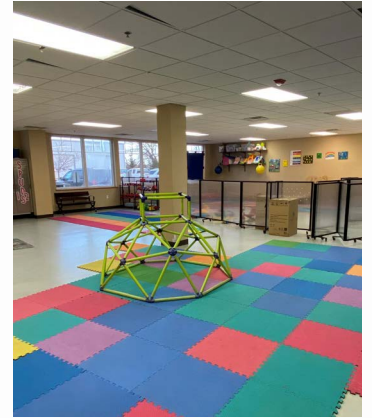


# APEX BUSINESS CENTER

4141/4201/4225 38TH ST. S., FARGO, ND 58104



4225 - 111



- 10,340 SF
- Turn-key daycare space
- Licensed for +94 children
- 7 classrooms
- 2,600 SF gym area
- Kitchen
- Laundry
- Multiple offices
- Outdoor playground area

