

JUSTIN CORPORATE CENTER FOR SALE

200 US HIGHWAY 9 NORTH

MANALAPAN, NJ 07726



PROPERTY OVERVIEW

AVAILABLE SF: ±60,207 SF

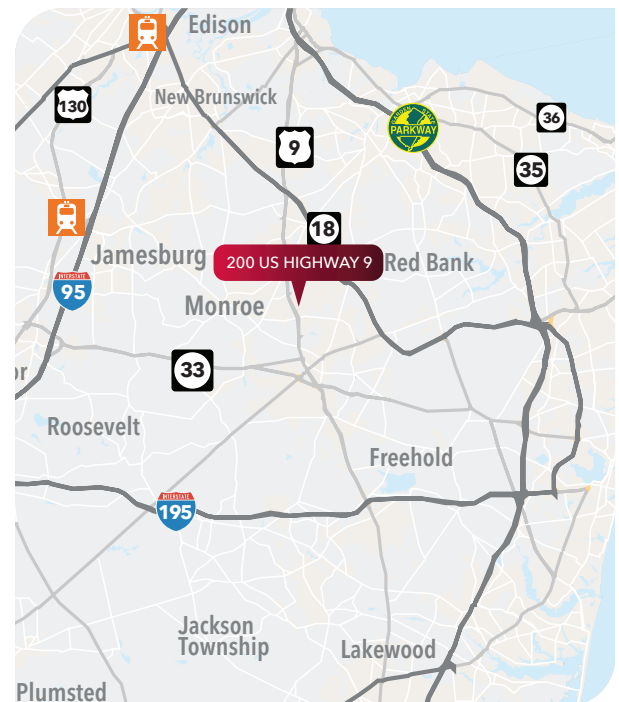
- HIGHLIGHTS:**
- Owner/User Opportunity
 - Headquarters-ready building, with modern, high-quality finishes
 - Recent capital improvements include, new roof, HVAC units & LED lighting

- AMENITIES:**
- Training rooms, games room, and large communal kitchen
 - Building generator & electric operated loading leveler

LAND AREA: 5.25 acres (Block: 17.10 Lot: 40.02)

PARKING: 260 spaces (4.00/1,000)

- LOCATION:**
- Located on US Highway 9 North at the intersection with Taylors Mills Road
 - Abundance of amenities within close proximity
 - Newark Liberty International Airport - 31 Miles
 - New York City - 43 Miles



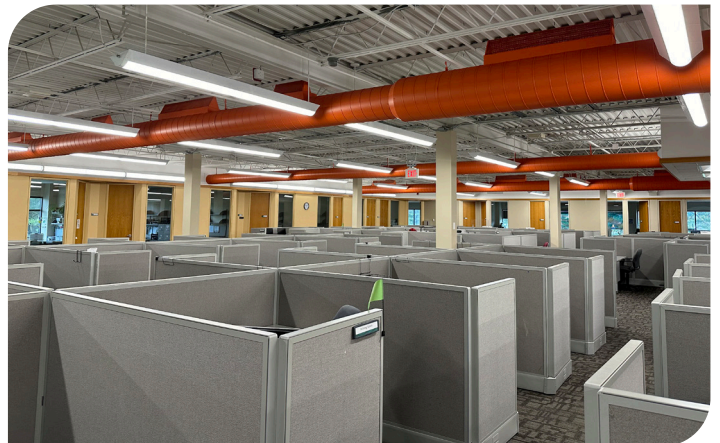
FOR MORE INFORMATION CONTACT EXCLUSIVE BROKER:

Mark Fowler, SIOR
mark.fowler@lee-associates.com
C 732.996.2966

All information furnished regarding property for sale, rental or financing is from sources deemed reliable, but no warranty or representation is made to the accuracy thereof and same is submitted to errors, omissions, change of price, rental or other conditions prior to sale, lease or financing or withdrawal without notice. Buyer acknowledges that Lee & Associates - WBE, LLC ("Broker") has not verified the information contained herein and does not make any representation about its accuracy. Buyer should confirm information contained in the Offering using its own sources. No liability of any kind is to be imposed on Broker herein.

JUSTIN CORPORATE CENTER FOR SALE
200 US HIGHWAY 9 NORTH
MANALAPAN, NJ 07726

INTERIOR PHOTOS



FOR MORE INFORMATION CONTACT EXCLUSIVE BROKER:

Mark Fowler, SIOR
mark.fowler@lee-associates.com
C 732.996.2966

All information furnished regarding property for sale, rental or financing is from sources deemed reliable, but no warranty or representation is made to the accuracy thereof and same is submitted to errors, omissions, change of price, rental or other conditions prior to sale, lease or financing or withdrawal without notice. Buyer acknowledges that Lee & Associates - WBE, LLC ("Broker") has not verified the information contained herein and does not make any representation about its accuracy. Buyer should confirm information contained in the Offering using its own sources. No liability of any kind is to be imposed on Broker herein.