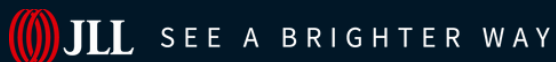




New Media Systems, Inc.  
804.359.3620  
www.newmediasystems.net

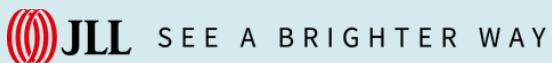
# The Watkins at Shockoe | 125 S 14th Street, Richmond, VA



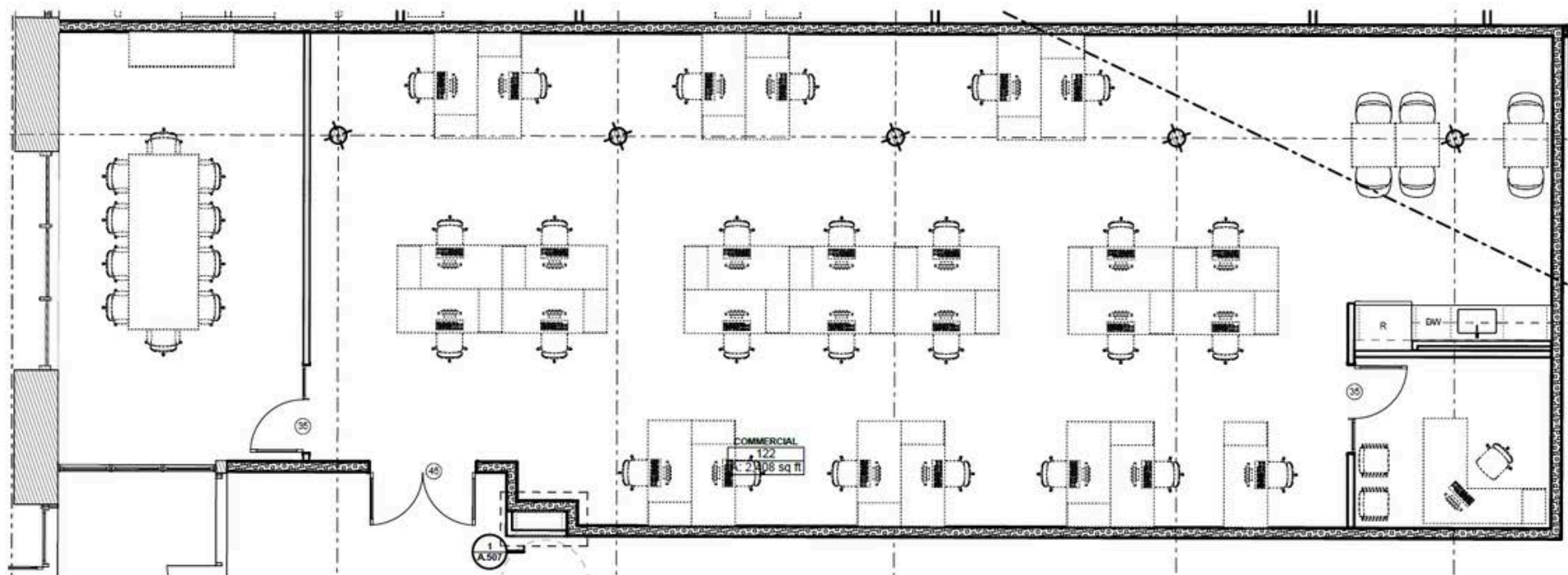
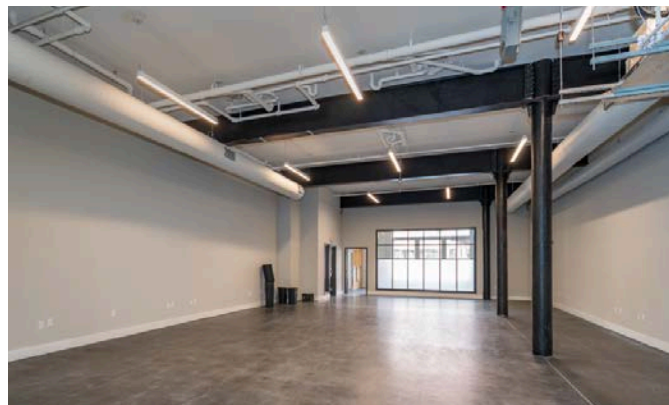
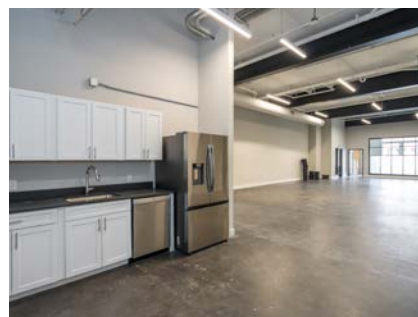
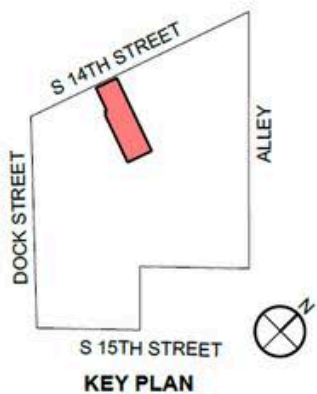
# THE WATKINS AT SHOCKOE

## Building Features

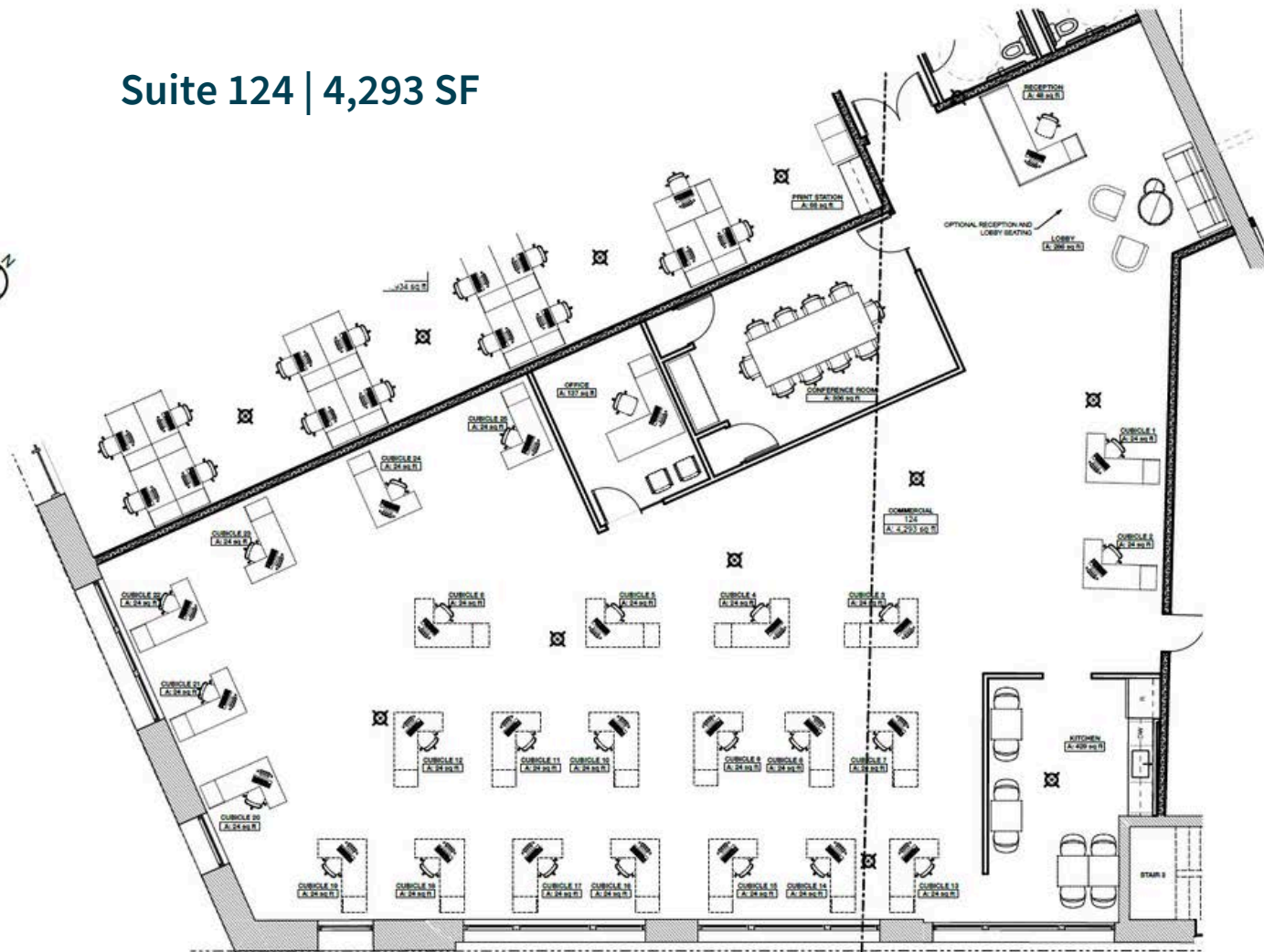
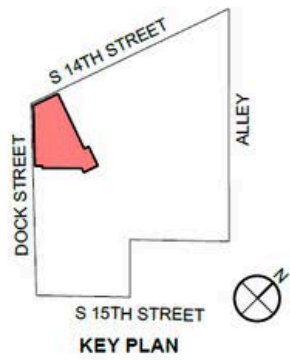
- 2,654± SF - 4,293 ± SF available
- Newly finished spec suites
- High exposed ceilings with ample natural light
- High visibility location on the corner of 14th and Dock Street
- On-site amenities include parking, fitness center, business center, and rooftop deck
- Designated parking lot across the street with several public lots nearby
- Walkable area to a variety of nearby restaurants, retail shops, hotels, cultural landmarks, and Richmond's Canal Walk
- Easy PULSE & GRTC accessibility



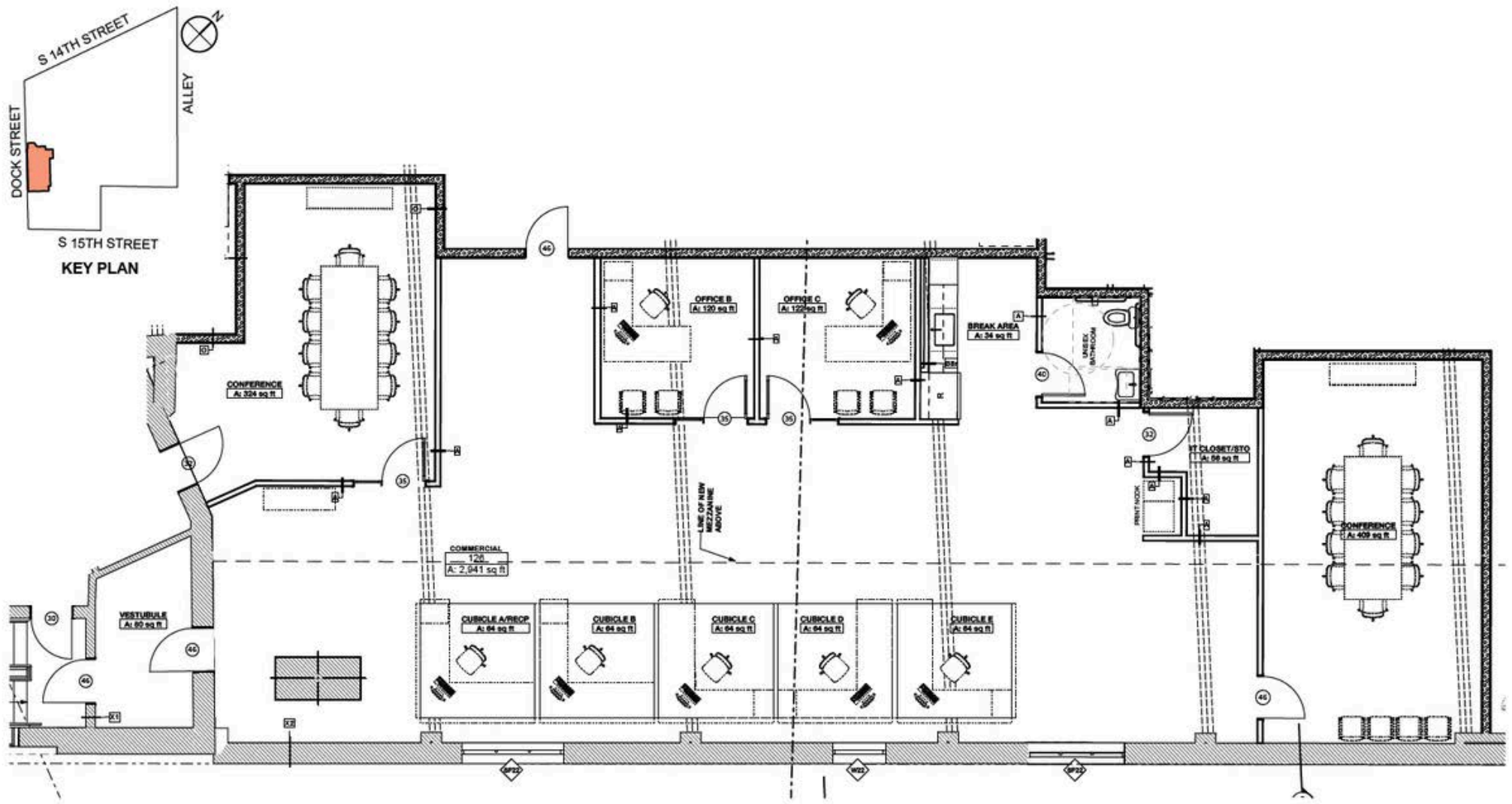
Suite 122  
2,654 SF



## Suite 124 | 4,293 SF

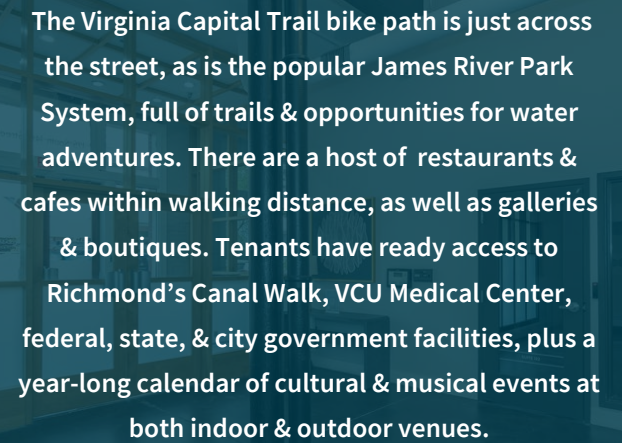


# Suite 126 | 2,950 SF

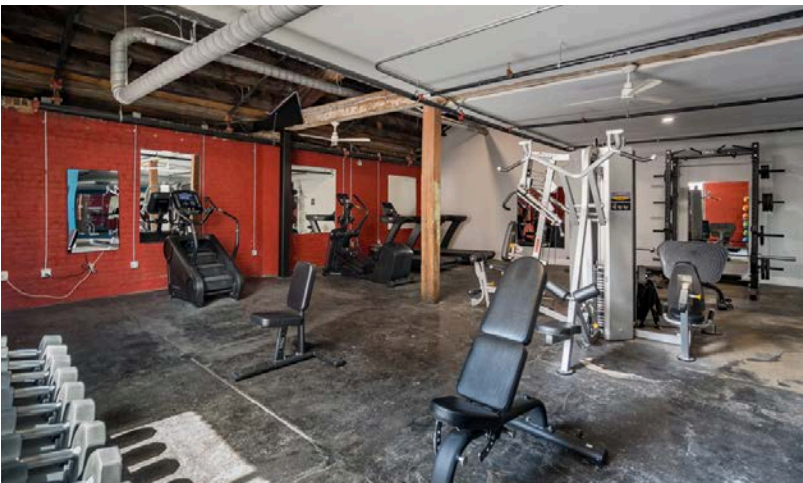
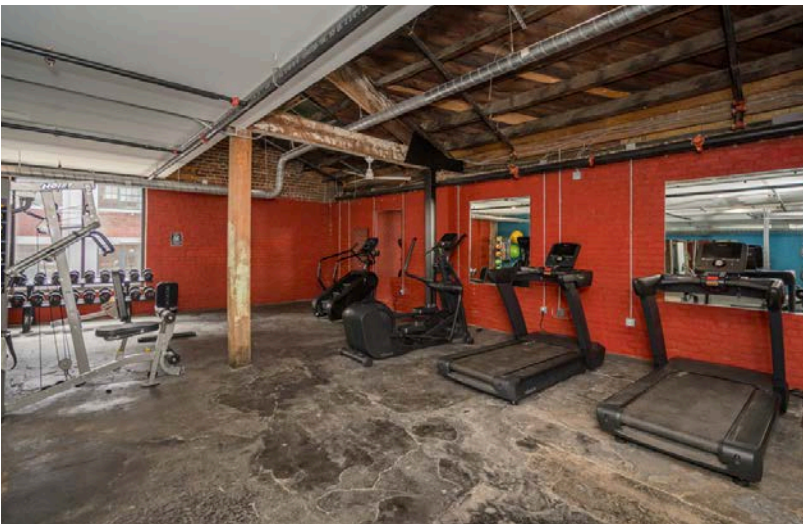




Located in the heart  
of Shockoe Slip!



The Virginia Capital Trail bike path is just across the street, as is the popular James River Park System, full of trails & opportunities for water adventures. There are a host of restaurants & cafes within walking distance, as well as galleries & boutiques. Tenants have ready access to Richmond's Canal Walk, VCU Medical Center, federal, state, & city government facilities, plus a year-long calendar of cultural & musical events at both indoor & outdoor venues.





The Pit & The Peel

Omni Hotel

Urban Farmhouse Market & Cafe

Native Plate

Westham Tavern

The Tobacco Company

Mom's Siam 2

Soul Taco

Europa Crust

Jimmy John's

Residence Inn by Marriott

Sine Irish Pub

Sprezza

Southern Railway Taphouse

125 S. 14TH STREET

The Hard Shell

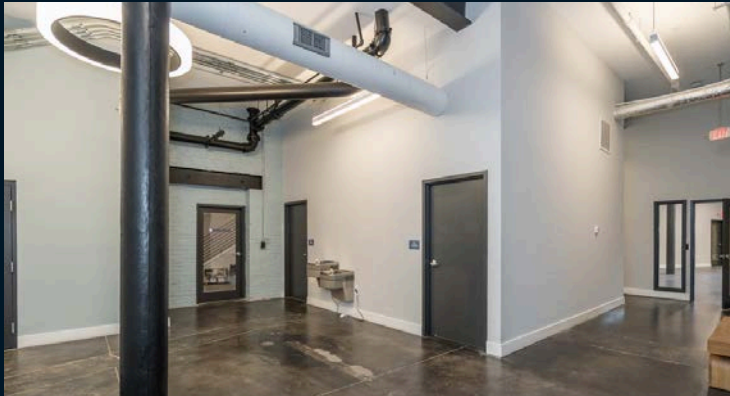
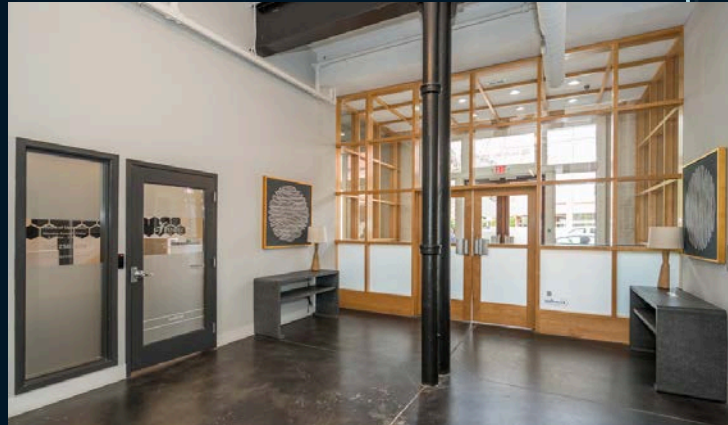


SEE A BRIGHTER WAY



THE MAN WITH SQUARE FEET

New Media Systems, Inc.  
908.359.3620  
www.newmediasystems.net



**Kaylin Farruggio**

kaylin.farruggio@jll.com

+1 (804) 802 6125

**jll.com**

**John Jay Schwartz MCR, RPS, IBC**

jjschwartz@havesitewilltravel.com

+1 (804) 350 1866

**TheManwithSquareFeet.com**

Jones Lang LaSalle Americas, Inc.