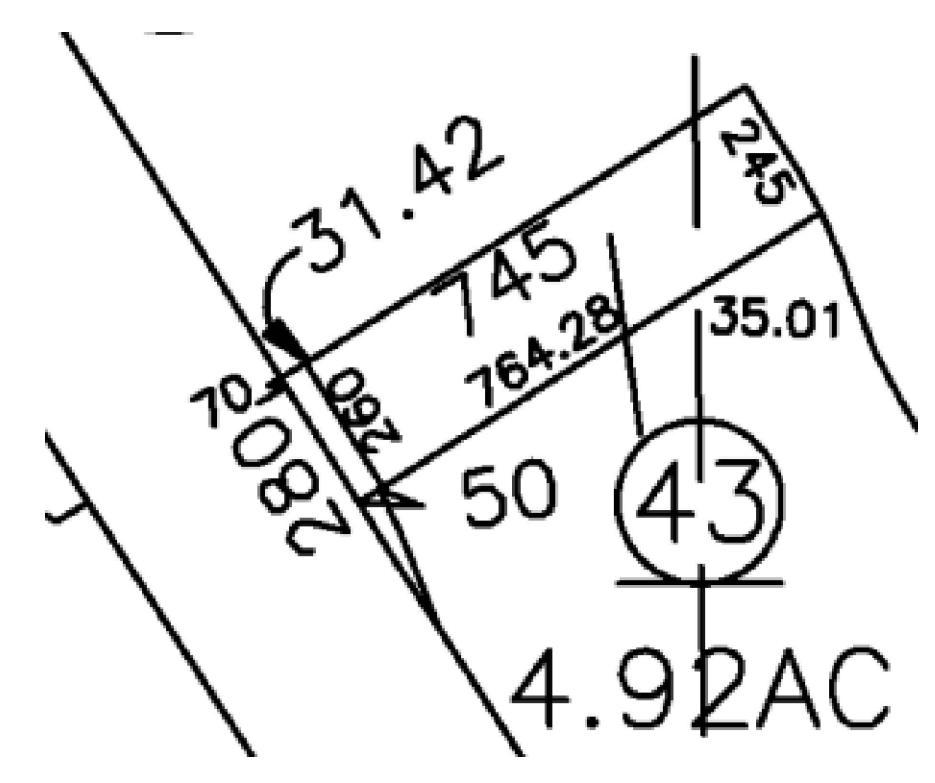
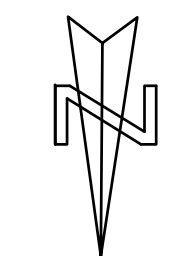


PROPOSED SITE PLAN



ASSESSORS PARCEL MAP

Legal Description: POR S2 SEC 29 10 10 4.92AC WLY OF TR 699 & ELY OF HWY
 Parcel # (APN): 017-010-043-000

GEORGE SPURGEON DESIGNS
 2306 LARK CT. THERMAL, CA. 92274
 OFFICE/CELL (909) 319-4074 EMAIL: gwsgdesign@att.net

**STORAGE UNITS
 AND
 RV STORAGE**
 APN# 017-010-043
 SALTON CITY, CA.

ISSUE	ISSUE DESCRIPTION	DATE
1		
2		
3		

STAMP:

DRAWN BY: GWS
 SHEET:
 SCALE: AS NOTED

SP-2