



Exceptional Westchester Location

505 White Plains Rd | Tarrytown, NY

Office Spaces For Lease

Contact

Frank Fiorella

914.747.5000 x223 ff@princetonrealtygroup.com

Steven Corrigan - Team Member 914.747.5000 x281 SC@princetonrealtygroup.com

January 2024

Executive Summary



OFFERING SUMMARY

COUNTY	Westchester
BUILDING SIZE	+/- 26,462 SF
AVAILABLE SF	Suite 113: 1,566 sf Suite 205: 662 sf
ADD'L CHGS	Elec \$3 psf; Real estate tax increases
LEASE RATE	\$23 psf
AVAILABILITY	Immediate

PROPERTY OVERVIEW

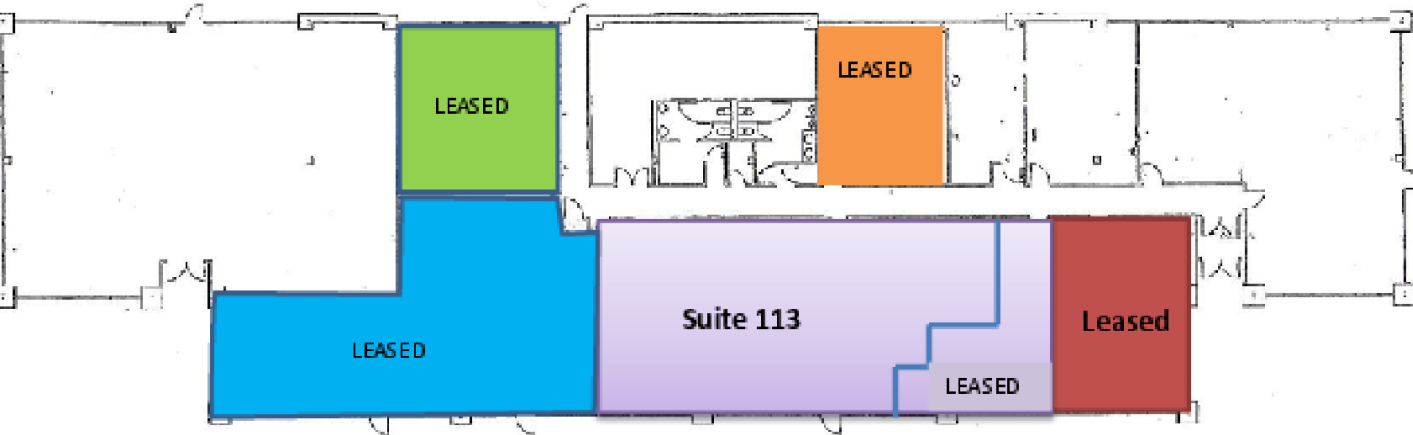
Office space available in Tarrytown, NY. Private windowed office, as well as suite of offices with full kitchen. Excellent light, view, and parking. Campus setting with new landscaping. Ample on-site parking. 24-hour access, fiber optic communication. Landlord has renovated all common areas with new carpet and wall finishes. Suites will have new LED lighting and new ceiling tiles.

LOCATION OVERVIEW

Excellent Westchester location. Convenient to I-287/I-87, the Saw Mill River Parkway, Route 9, the Sprain Pkwy, I287, and the NYS Thruway. Right off of the Tappan Zee Bridge.

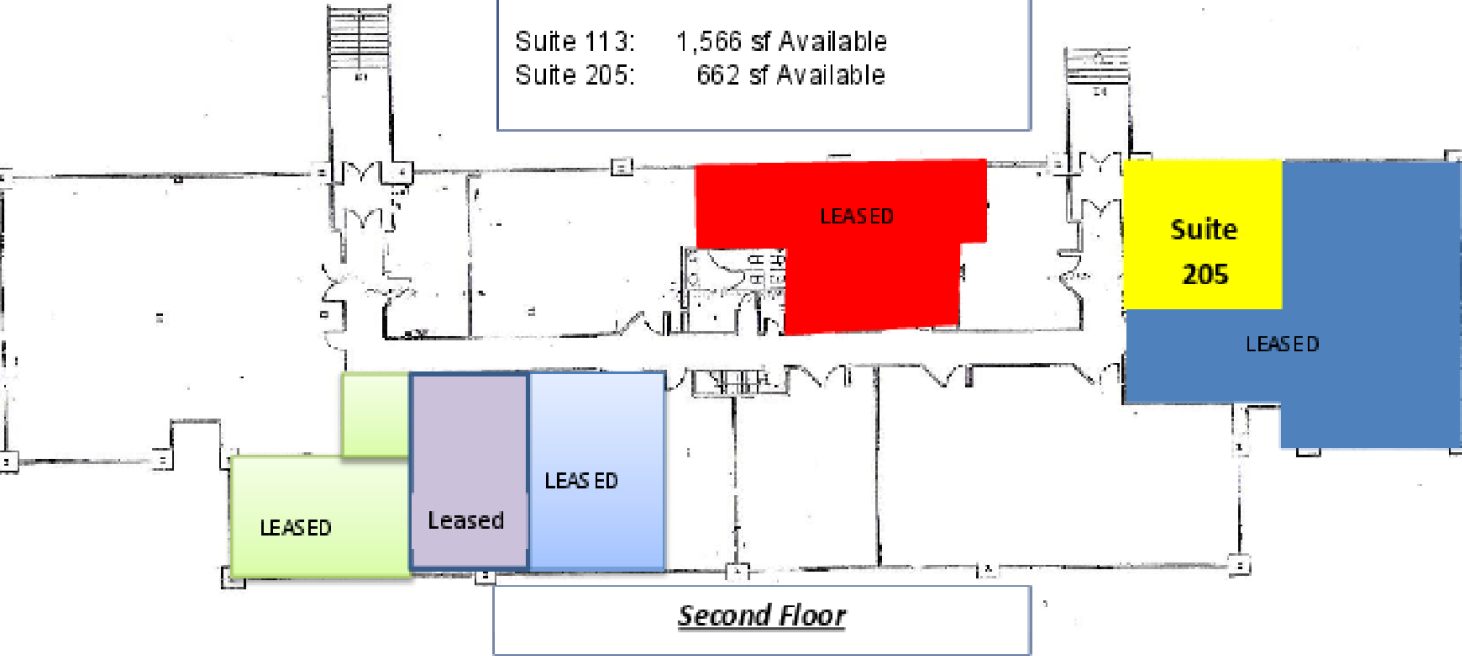
ALL INFORMATION IS FROM SOURCES DEEMED RELIABLE AND IS SUBMITTED SUBJECT TO ERRORS, OMISSIONS, CHANGE OF PRICE, RENTAL, PRIOR SALE AND WITHDRAWAL WITHOUT NOTICE.

Floor Plans



First Floor

Suite 113: 1,566 sf Available
Suite 205: 662 sf Available



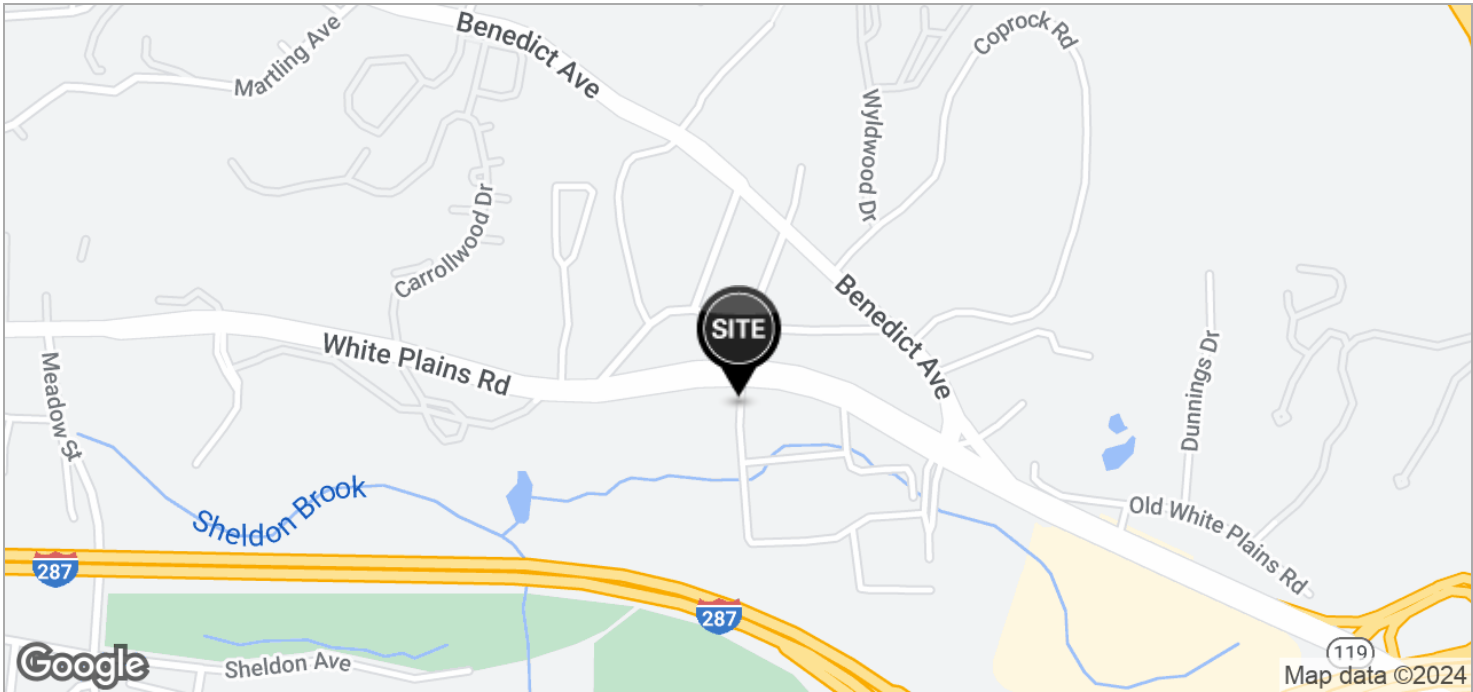
Additional Photos



505 White Plains Rd | Tarrytown, NY

OFFICE BUILDING FOR LEASE

Location Maps



Neighborhood Businesses

