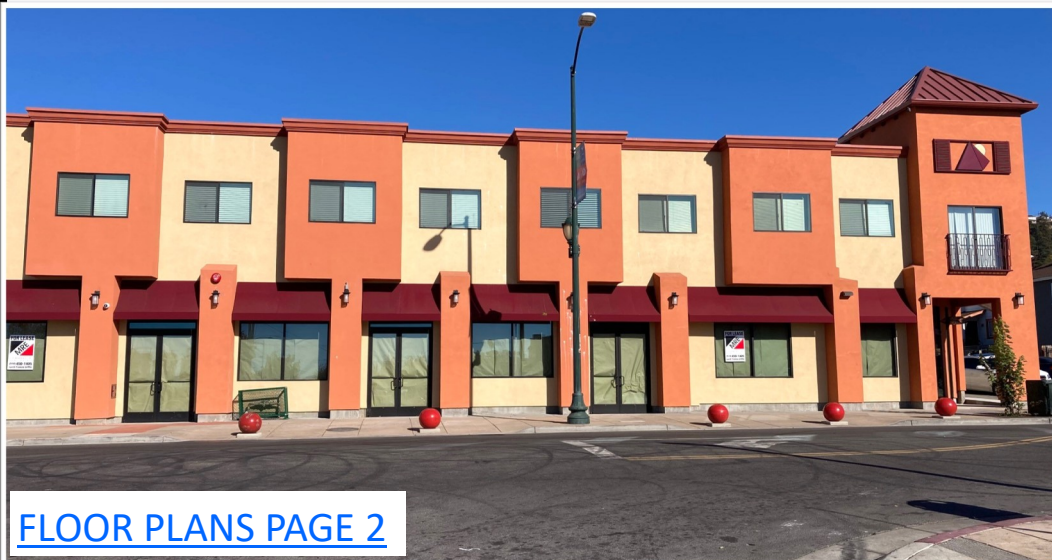


FOR LEASE

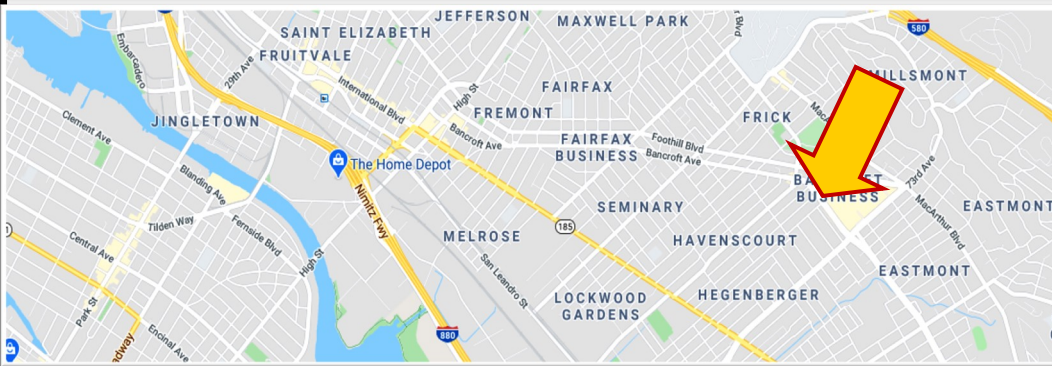
# NEW HIGH VISIBILITY RETAIL SPACE ±2,971 SF IN OAKLAND'S EASTMONT COMBINABLE SUITES: ±1,052, 953, 966 RSF 7540 MACARTHUR BLVD OAKLAND CA 94605



TENANT IMPROVEMENTS NEGOTIABLE



[FLOOR PLANS PAGE 2](#)



Newly constructed retail space available for lease in Oakland's up and coming Eastmont Neighborhood.

The retail space, as three individual suites or combinable, shall be delivered in a "vanilla shell" condition. Devisable from ±2,971 to ±1,052, ±953 and ±966 RSF.

Features include:

- Over 104 feet of frontage on MacArthur Blvd
- New storefronts
- High ceilings
- Rear access from the parking area

Tenant improvement allowance negotiable for qualified tenants.

**Francis Griffin**

510-450-1405

fgriffin@mrecommercial.com

CA BRE No: 02016713

PHOTOS  
DEMOGRAPHICS  
AREA BUSINESS

STREET VIEW  
SATELLITE  
MAP

**\$3.00 PSF  
MONTHLY / IG**

