



FOR LEASE

2100 Brookwood Dr.

Little Rock, Arkansas

Lease Rate:

\$18.00

PSF

CONTACT US

Nathan Monan

+1 501 850 0741

nathan.monan@ar.colliers.com

Justin Bentley, CCIM, SIOR

+1 501 850 0739

justin.bentley@ar.colliers.com

Riverdale Office Building

Features

- Total building size: +/- 15,000 SF
- Available for lease: 10,000 SF
- Lot size: 1.81 acres
- Lease rate: \$18.00/SF (\$15,000.00/Monthly)
- Traffic count: approximately 21,500 vehicles per day on Cantrell Road
- Located in the growing Riverdale neighborhood filled with local restaurants and retailers

Colliers | Arkansas

1 Allied Drive, Suite 1500

Little Rock, AR 72202

P: +1 501 372 6161

F: +1 501 372 0671

This document/email has been prepared by Colliers for advertising and general information only. Colliers makes no guarantees, representations or warranties of any kind, expressed or implied, regarding the information including, but not limited to, warranties of content, accuracy and reliability. Any interested party should undertake their own inquiries as to the accuracy of the information. Colliers excludes unequivocally all inferred or implied terms, conditions and warranties arising out of this document and excludes all liability for loss and damages arising there from. This publication is the copyrighted property of Colliers and /or its licensor(s). © 2025. All rights reserved. This communication is not intended to cause or induce breach of an existing listing agreement. Colliers International Group Inc.

FOR LEASE

Neighborhood Map



Area Demographics



Estimated Population (2025)

1 Mile	3 Mile	5 Mile
5,911	64,125	136,754



Estimated Households (2025)

1 Mile	3 Mile	5 Mile
3,373	30,422	62,272



Est. Avg Household Income (2025)

1 Mile	3 Mile	5 Mile
\$167,736	\$99,935	\$91,109

Source: Esri, Census Bureau, and other data providers

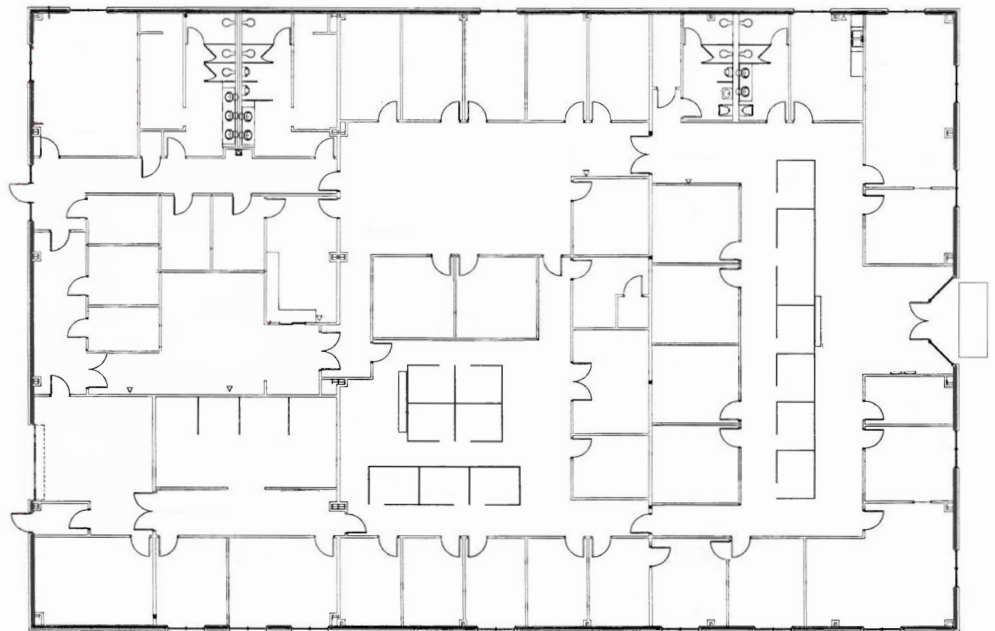
CONTACT US

Nathan Monan

+1 501 850 0741
nathan.monan@ar.colliers.com

Justin Bentley, CCIM, SIOR

+1 501 850 0739
justin.bentley@ar.colliers.com



Colliers | Arkansas

1 Allied Drive, Suite 1500
Little Rock, AR 72202
P: +1 501 372 6161
F: +1 501 372 0671

This document/email has been prepared by Colliers for advertising and general information only. Colliers makes no guarantees, representations or warranties of any kind, expressed or implied, regarding the information including, but not limited to, warranties of content, accuracy and reliability. Any interested party should undertake their own inquiries as to the accuracy of the information. Colliers excludes unequivocally all inferred or implied terms, conditions and warranties arising out of this document and excludes all liability for loss and damages arising there from. This publication is the copyrighted property of Colliers and /or its licensor(s). © 2025. All rights reserved. This communication is not intended to cause or induce breach of an existing listing agreement. Colliers International Group Inc.

FOR LEASE

Property Photos



CONTACT US

Nathan Monan

+1 501 850 0741
nathan.monan@ar.colliers.com

Justin Bentley, CCIM, SIOR

+1 501 850 0739
justin.bentley@ar.colliers.com

Colliers | Arkansas

1 Allied Drive, Suite 1500
Little Rock, AR 72202
P: +1 501 372 6161
F: +1 501 372 0671



This document/email has been prepared by Colliers for advertising and general information only. Colliers makes no guarantees, representations or warranties of any kind, expressed or implied, regarding the information including, but not limited to, warranties of content, accuracy and reliability. Any interested party should undertake their own inquiries as to the accuracy of the information. Colliers excludes unequivocally all inferred or implied terms, conditions and warranties arising out of this document and excludes all liability for loss and damages arising there from. This publication is the copyrighted property of Colliers and /or its licensor(s). © 2025. All rights reserved. This communication is not intended to cause or induce breach of an existing listing agreement. Colliers International Group Inc.