



Asturia Land Parcels For Sale

*Development ready land sites in
the heart of Trinity/Odessa market*

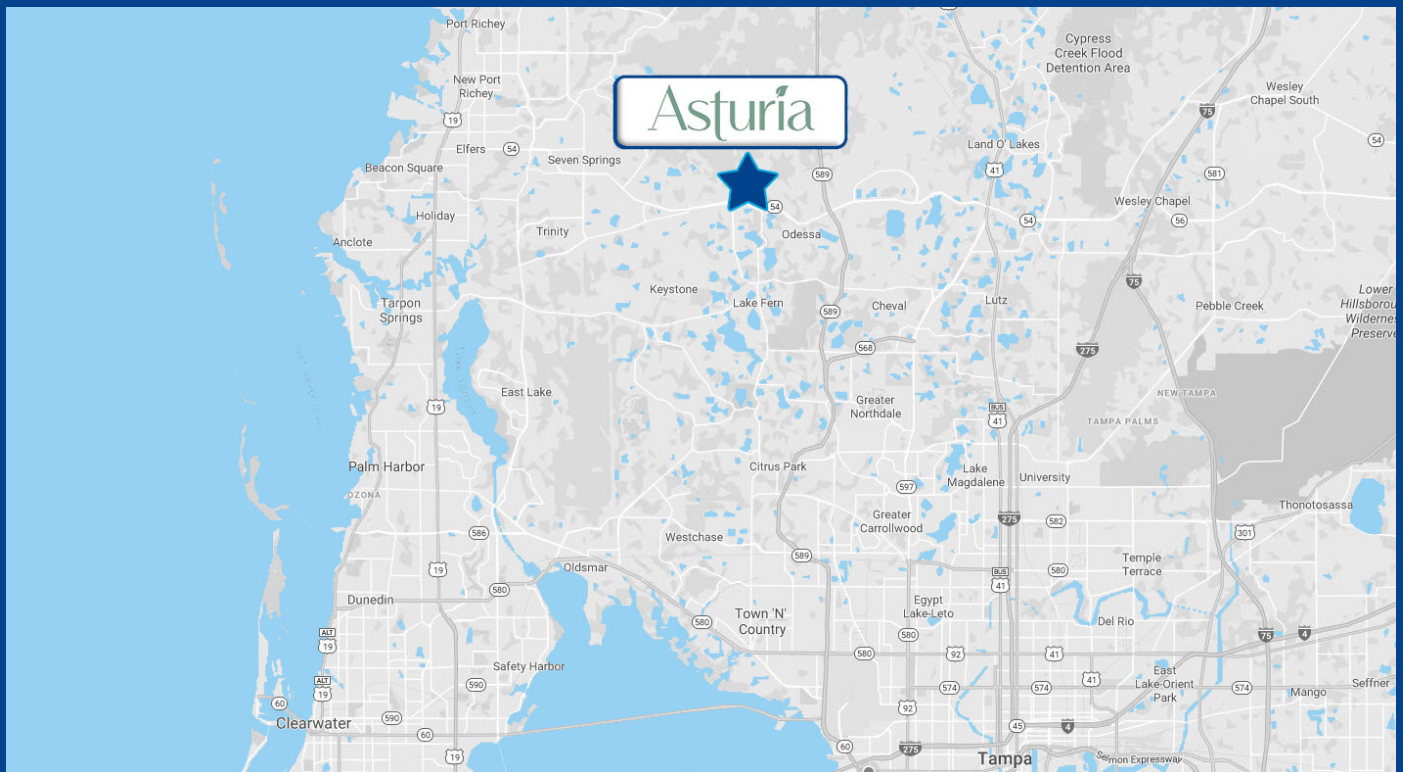
SR 54 & Asturian Parkway
Odessa | FL 33556

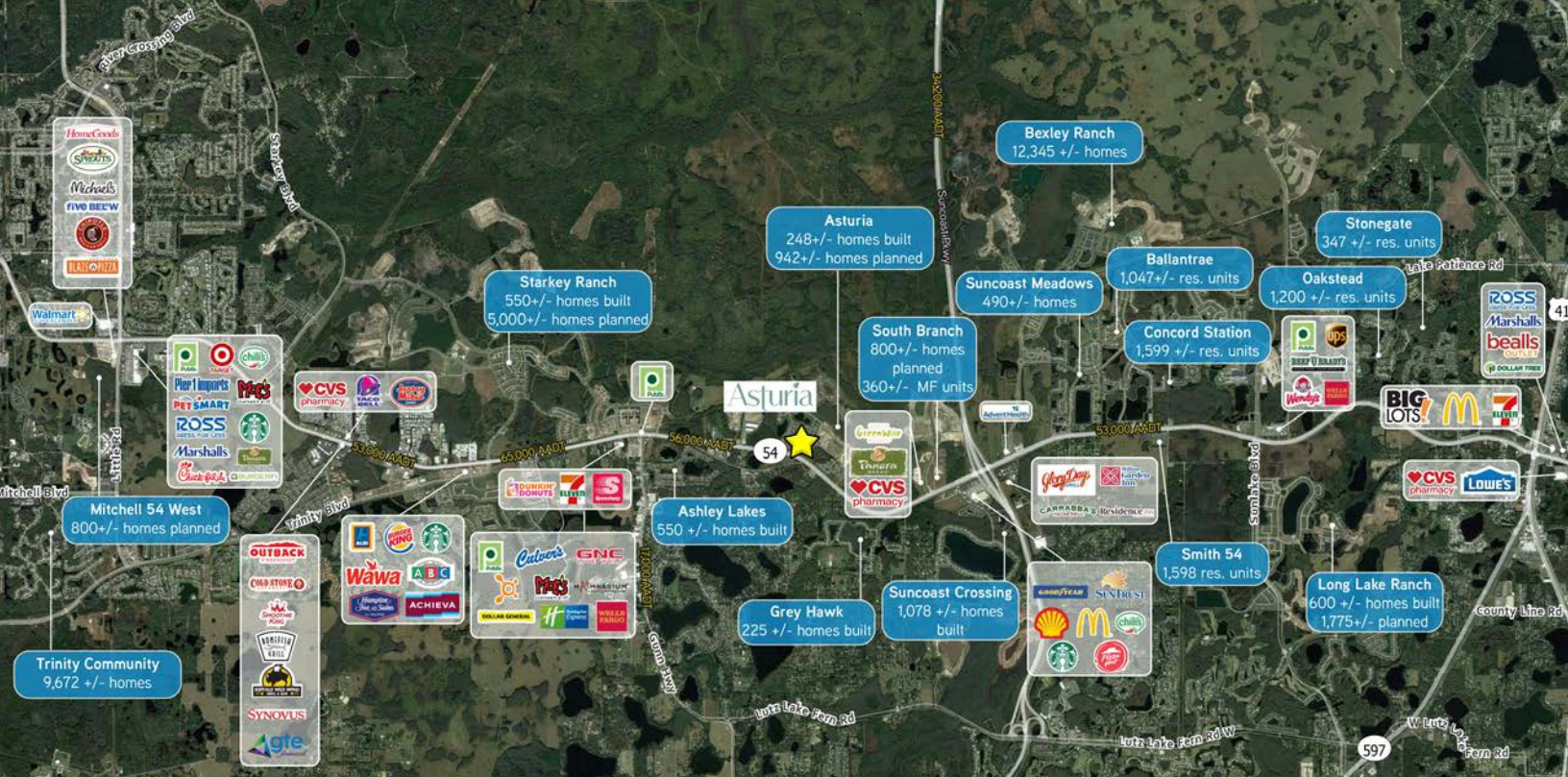
- Highly visible SR 54 frontage with over 55,000 cars per day
- Premier pin corner location at entrance to the Asturia community with 1,000± residences
- 1.24± and 1.98± acre parcels available, suitable for retail, medical or office use
- Signalized intersection
- Zoning and retail entitlements in place
- 2010-2019 annual population growth rate of 3.29% within 5 miles

Site Plan



Location





Contact



Lisa McCaffrey
 Executive Managing Director
 Retail Services
 +1 813 871 8519
 lisa.mccaffrey@colliers.com



Erica Waltermire
 Executive Managing Director
 Retail Services
 +1 813 605 4471
 erica.waltermire@colliers.com

Demographics

	3-Mile	5-Mile	7-Mile	10 Min DT	15 Min DT
Total Population	18,706	57,136	122,563	36,167	91,625
Daytime Population	13,248	42,090	106,582	28,457	72,885
Avg. Household Income	\$105,334	\$109,221	\$103,801	\$104,628	\$93,863
Median Age	42.1	43.9	45.5	47.0	44.4



4830 W. Kennedy Blvd.
 Suite 300
 Tampa, FL 33609
 P: +1 813 221 2290

This document has been prepared by Colliers International for advertising and general information only. Colliers International makes no guarantees, representations or warranties of any kind, expressed or implied, regarding the information including, but not limited to, warranties of content, accuracy and reliability. Any interested party should undertake their own inquiries as to the accuracy of the information. Colliers International excludes unequivocally all inferred or implied terms, conditions and warranties arising out of this document and excludes all liability for loss and damages arising there from. This publication is the copyrighted property of Colliers International and/or its licensor(s). ©2022. All rights reserved.