



15894 HIGHWAY 17  
P.O. BOX 56  
HAMPSTEAD, NC 28443  
910/270-5100 FAX: 910/270-5110

# FOR LEASE PROFESSIONAL OFFICE IN HAMPSTEAD



**16356 HIGHWAY 17  
HAMPSTEAD, NORTH CAROLINA**

**This former dentist office has a versatile floor plan and ample parking. Available for occupancy in early 2026, it provides excellent visibility and over 1,800 square feet of quality space.**

**CALL  
BRIAN NADEAU  
(910) 622-6258**

**CALL  
HENRY NADEAU  
(910) 524-7184**

***Commercial & Investment Real Estate Specialists***

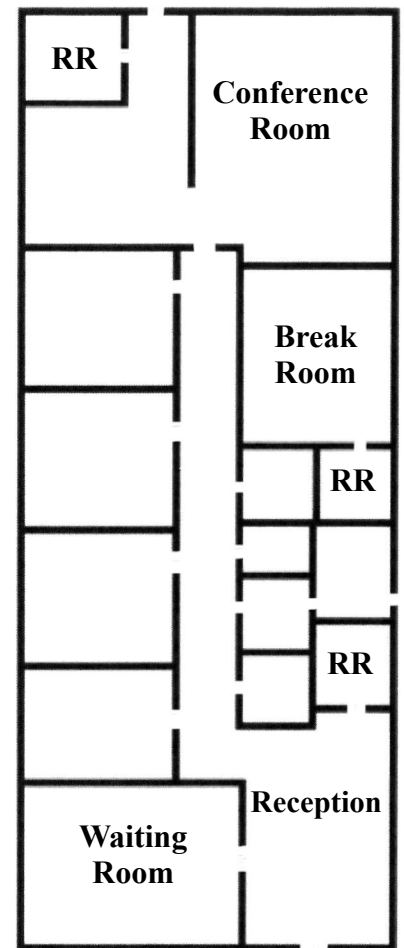
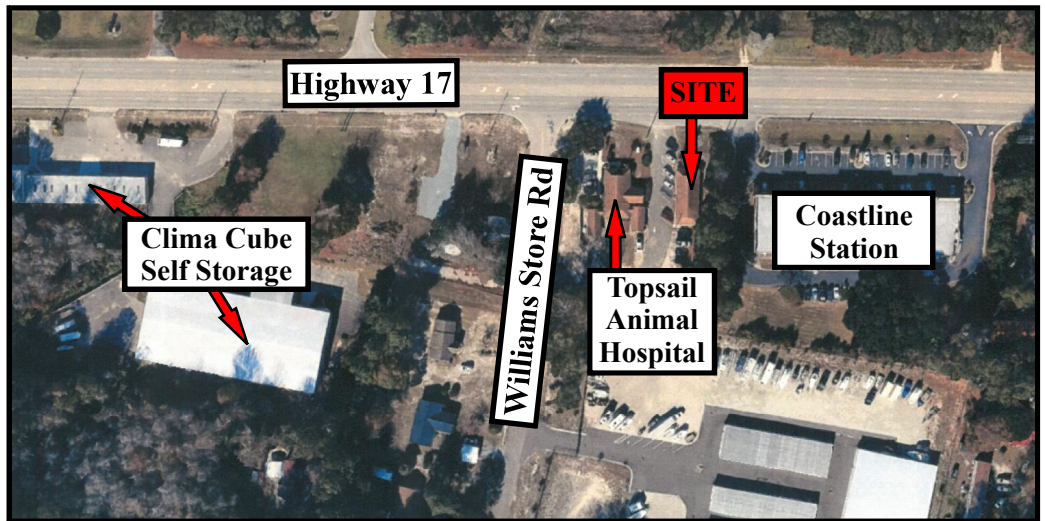
email: [info@creativecommercial.biz](mailto:info@creativecommercial.biz)  
[www.creativecommercial.biz](http://www.creativecommercial.biz)



# 16356 HIGHWAY 17

## THE BUILDING

- +/- 1,824 Square Feet
- Fully Heated And Cooled
- 4 Offices/Exam Rooms With Plumbing Stubs In Place
- 1 Executive Office
- 3 Restrooms And 1 Break Room
- Conference Room
- Pender County Water
- Septic System
- Tax Parcel ID: 3293-53-1435-0000
- Traffic Count Over 50,000 Cars Per Day
- General Business (GB) Permits Most Office, Retail And Service Uses
- In East Pender, Over 10,000 New Residential Units Are Planned And Permitted. County Population Is Projected To Double In The Next 25 Years.



## THE OFFERING

**\$5,800/Mo**

- Rent Includes Property Taxes And Building Insurance
- Tenant Responsible For Utilities

CREATIVE COMMERCIAL PROPERTIES, INC.

CALL

HENRY NADEAU

Or

BRIAN NADEAU

(910) 524-7184

(910) 622-6258

Email:henry@creativecommercial.biz

Email:brian@creativecommercial.biz

[www.creativecommercial.biz](http://www.creativecommercial.biz)



Creative Commercial Properties, Inc. reasonably believes the information in this brochure is fairly and accurately stated. However, any prospective purchaser is urged to independently confirm its accuracy and completeness.